

Connected Technologies enhances its turnkey system interface by adding Mobile Badge

Published on 25 Apr 2019



Connected Technologies LLC, maker of the award-winning Connect ONE cloud-hosted security management platform, has added Mobile Badge to its wide range of value-add features and capabilities included in the turnkey system interface.

Designed for schools, campuses, construction sites, clubhouses or other locations with a changing, fluid population, Mobile Badge puts credentialing identification management on the user's phone, similar to a traditional physical badge. Mobile Badge can be used to instantly verify active/inactive status via barcode and can also be used to print a temporary visitor's badge if necessary.

System management time

The user's Mobile Badge consists of the dealer or end-user's company logo, name, picture, custom information fields (such as student/employee identification number) and a barcode for verification scanning, with an easily recognisable green border indicating an active credential and red border indicating inactive status.

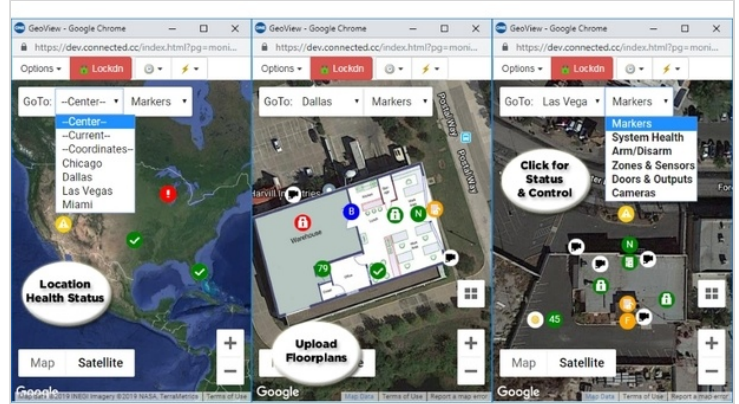
Scanning the barcode will instantly show the user's status, permissions and last activity. In the case of a visitor badge, one scan of the barcode and the user's credentials can be quickly removed after use, saving system management time. Mobile Badge in the Connect One app is used in place of a physical badge and is conveniently accessed from the login screen (if not currently logged in), account window and ScanPass Mobile Credential screen. Headquartered in Monument, Colo., Connect ONE is a patented management solution for systems integrations that dealers resell to their customers, growing their monthly recurring revenue.

You may also be interested in...



What technology trend will have the biggest impact on physical security...

The year ahead holds endless promise for the physical security industry, and much of that future will be determined by which technologies th...



Connected Technologies releases GeoView mapping feature for Connect ON...

Connected Technologies LLC has released GeoView, a new feature that adds the power of Google Maps to the award-winning Connect ONE cloud-hos...