

MAXIMIZE BUSINESS EFFICIENCY
AND INTELLIGENCE
SMART RETAIL SOLUTION
FOR SUPERMARKETS &
CONVENIENCE STORES

 smart solution **2.0**

WITH HIKVISION AS YOUR INTEGRATION PARTNER, YOU WILL STAND ON A SOLID FOUNDATION.

RAPID GROWTH

Hikvision is the world's leading supplier of video surveillance products and solutions, featuring the industry's strongest R&D workforce and state-of-the-art manufacturing facilities. In just 15 years, Hikvision has developed from being a single-product provider to a complete product and solution provider and a global market leader.

GLOBAL REACH

- 25 Regional Subsidiaries
- 57% of Employees in International Business Center are locals



BROAD PORTFOLIO

Hikvision's success stories extend over a number of vertical markets. Each year, we add new successes to our list. Still a relatively young company, we continually conquer new applications, building excellence and intelligence into all we do.

Our successful vertical market applications around the world include:

- Smart buildings
- City surveillance
- Parking facilities
- Banking and finance
- Critical infrastructure
- Hotels, casinos, and resorts
- Retail centers and warehouses
- Police, military, and mobile law enforcement
- Education, transportation, healthcare – and more!



FUTURE INNOVATION

Hikvision re-invests upwards of 7% of annual revenue into R&D. We hold over 600 copyrights (100+ increase from 2016) and 1,300 patents (400+ increase from 2016). Of our 20,000 employees, we employ over 8,000 engineers, of which over 2,000 are software engineers.

Hikvision's Research Institute conducts innovative research and development to keep us at the forefront of technology.

- Research topics: Perceptive Technology, Intelligent Analysis Technology, Big Data and Cloud Storage Technology, and Multimedia Technology.
- The largest R&D team in Artificial Intelligence in the security industry.
- Sophisticated experience of video target detection, image segmentation, video structuring and video retrieval.
- Ranked No.1 in Scene Classification at ImageNet 2016 challenge and ranked top in the MOT Challenge Evaluation.

STRONG NAME

Hikvision continues to build close partnerships with distributors, system integrators and installers, as well as third-party technology partners. Today, Hikvision has over 350 technology partners globally.

ECOSYSTEM PARTNER PROGRAM WE SUPPORT YOU ALL THE WAY!

When joining this partner program, you will enjoy access to a wealth of technical and commercial resources, and we ensure that your solution enjoys strategic marketing through our communication channels. You will also get instant access to our entire sales organization. A vital part of our program is the streamlined online communication with our technical teams as well as the tools to plan the go-to-market activities.

PROGRAM TOOLS AND BENEFITS

- **ISAPI** – Hikvision unifies the Application Programming Interface for all products
- **HEOP** – The Hikvision Embedded Open Platform enables you to download and run your applications directly in the cameras
- **Device Simulator** – Simulate communication protocols for testing and development
- **Integration Checker Tool** – Test your applications against the online integration checker tool
- **H-Certification** – Certify your integration/application as proof of compatibility

SUPPORT

- SDK Training
- Integration Support
- Access to Integration Resources

SALES & MARKETING

- Dedicated Business Development Planning
- Networking Opportunities with the Hikvision Salesforce
- Co-marketing and Event Opportunities



SMART SOLUTION 2.0 FOR RETAIL SUPERMARKETS & CONVENIENCE STORES



Supermarkets and convenience stores provide us with the essentials of life. They support families and communities in every locale around the world as a vital part of our homes, neighborhoods, and lives – every day. Because of this, they are also vulnerable to subtle dangers. Hikvision is dedicated to developing the most advanced video surveillance technology in affordable, convenient, and vitally effective packages for today's security needs.

More than just security, the Smart Solution 2.0 packs the most advanced technologies into complete end-to-end solutions for shopping areas of any kind. Video surveillance, business intelligence, parking area data, and more all come together in flexible and powerful components from the world's number one security solution provider.

- Ensures around-the-clock safety for customers, personnel, and merchandise
- Resolves transaction disputes and aids loss prevention
- Provides complete central management of chains and enhances operations



Perimeter Protection

- High performance PTZ cameras provide automatic event detection functions
- DeepMind NVR ensures the highest detection accuracy rate



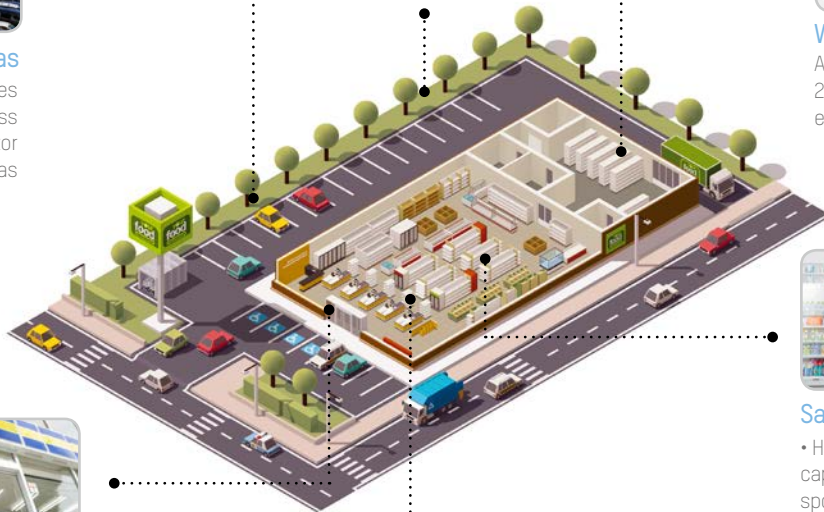
Parking Areas

- An ANPR system manages vehicle access
- PanoVu cameras monitor outdoor parking areas



Warehouses

- A DarkFighter camera ensures 24/7 surveillance even in extremely low-light conditions



Entrances

LightFighter cameras provide clear visibility both inside and outside a store in high-contrast lighting



Sales Floor

- High resolution fisheye cameras capture panoramas with no blind spots
- A centralized video management platform grants access to off-site video streams and playback

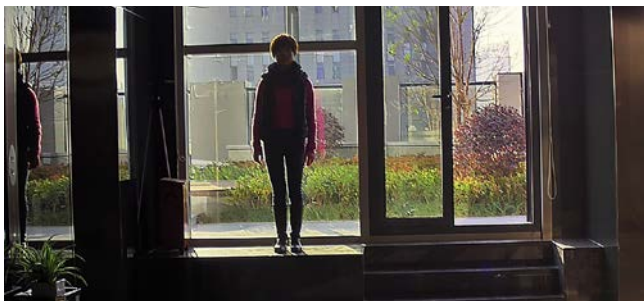


Cashiers

Transaction Data Overlay with video prevents POS transaction manipulation and shoplifting

MONITORING ENTRANCE

The entrance and lobby areas are the most frequented locations, requiring highly detailed facial imaging even in high-contrast lighting.



Conventional Camera

- **Super WDR Cameras:**

Hikvision LightFighter Series cameras feature industry-leading 140 dB wide dynamic range and triple exposure technology, providing crystal clear image quality even in high contrast sunlit environments.

- **Smart Detection:**

Hikvision Smart IP cameras have the full set of Smart features, such as intrusion detection, object left/removal detection, and more, for powerful security management.



LightFighter Camera

MONITORING SHOPPING AREA

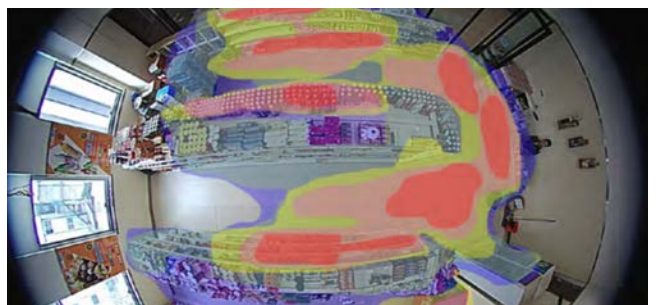


2 x Panoramic View

In spacious areas, less camera counts means less installation & labor fees. A high definition panoramic solution is ideal for these areas to get a maximum monitoring views and image quality insurance.



Fisheye



Fisheye with heat map function on

SUPERMARKETS & CONVENIENCE STORES



With a high-ratio optical zoom lens, the indoor PTZ camera offers more details over expansive areas. This PTZ is designed for a wide range of high-definition monitoring, such as shopping areas, transit stations, large venues, and more.



Hikvision's DarkFighter ultra-low-light cameras ensure colored images in dimly lit environments for excellent visibility during off-hours



MONITORING CONVENIENCE STORES



Convenience stores often have no dedicated loss prevention staff, and shelving can leave blind spots for the cashier to monitor. The HDMI Dome Network Camera watches over those blind spots and directly transmits video to a TV, deterring potential shoplifters.



MONITORING IN-STORE WAREHOUSES



Warehouses and storage areas are often sought out by thieves, and even by employees on occasion. At least one security camera is advisable to watch over inventory.



MONITORING OUTDOOR PARKING AREAS



Parking area lighting can be a tremendous challenge. That's why Hikvision's DarkFighter Camera captures sharp color images, even at starlight levels.

Multi-imaging Cameras are equipped with four or eight fixed imagers to provide a 180-degree or 360-degree panoramic horizontal view. One HD PTZ camera can provide highly detailed images even in dimly lit environments.

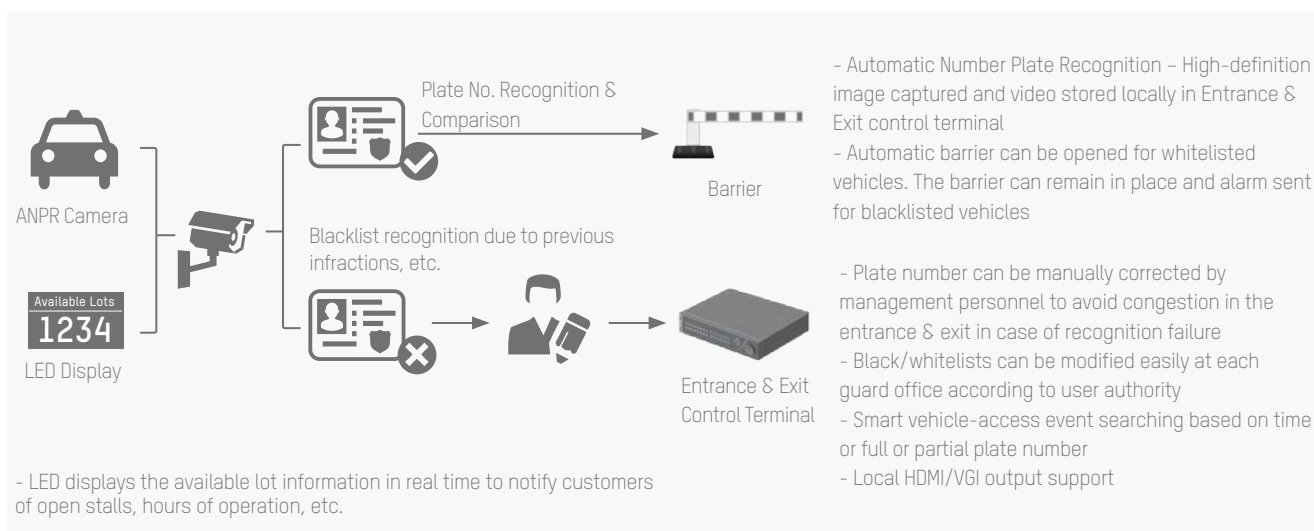


PARKING VEHICLE ACCESS MANAGEMENT



Hikvision Vehicle Access system combines high quality ANPR cameras and back-end devices to create barrier linkage, B/W list filtering and alarm triggering.

*The exact functionalities may vary based on local strategy and product development.

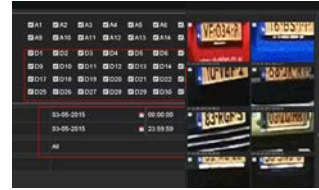




License Plate Recognition
- Entrance Time Recording
- Plate Number Recording



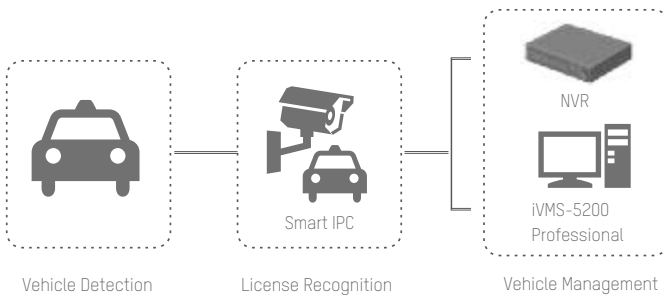
Vehicle Management
- Auto Comparison
- Blacklist Filtering
- Alarm Triggering



Smart Search / Smart Backup
- LPR Searching
- Post-event Investigation



Vehicle Detection
- GEO Tracking
- Increases Security



- License Plate Recognition
- Vehicle Detection
- Vehicle Management
- Smart Search / Smart Backup



MONITORING PERIMETER PROTECTION



Utilize Hikvision HD products that provide up to 4K high resolution, 200-meter infrared (IR) range, and are resistant to extreme weather conditions and vandalism. Hikvision's HD offerings also include full HD 1080p video with an outstanding frame rate of 60 fps, as well as Smart detection technology including: line crossing detection, intrusion detection, region enter/leaving, etc. These tools can help keep your perimeter secure.



Line Crossing
Detection

Intrusion
Detection

Region Entrance
& Exiting

Pictures and alarm messages from IP Camera



A Cat is crossing the Line



Leaves are shaking

After processing by DeepMind NVR(/S), the false alarms would be filtered.

Alarm accuracy at least 90%

LOSS PREVENTION POS INTEGRATION



Hikvision's POS Solution connects surveillance video with transaction data at Points of Sale (POS). All scanned items can be displayed in live view and playback and can be programmed to trigger alarms. This allows managers to instantly playback or search for a specific transaction – even months after the event. This resourceful solution serves to reduce hidden shrink from theft or fraudulent POS activity.

Three ways to generate POS data:

- Capture while POS data is sent for printing (via RS232/USB)
- Capture while POS data is sent to central database (via network)
- Forward via POS software



- NVR supports multiple POS protocols, including Universal Protocol, EPSON, AVE, and NUCLEUS, with even more on the way.
- In universal protocols, users can self-define tags indicating start line, line breaks, and end line.

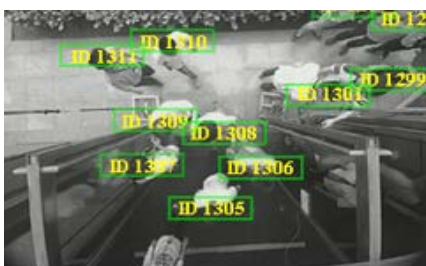


BUSINESS INTELLIGENCE PEOPLE COUNTING



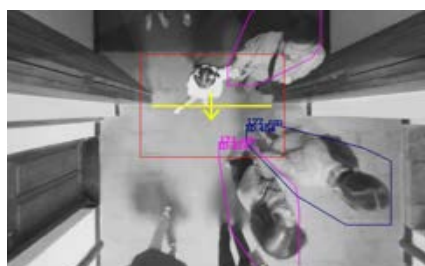
The Dual-Lens People Counting Camera can be integrated by third party through SDK or ISAPI

- Customer distribution reports, based on data collected from people-counting cameras in shopping areas during a specific time period, can be generated.
- Daily, weekly, and monthly customer distribution reports contribute to improved personnel scheduling and effectively enhance marketing strategies.



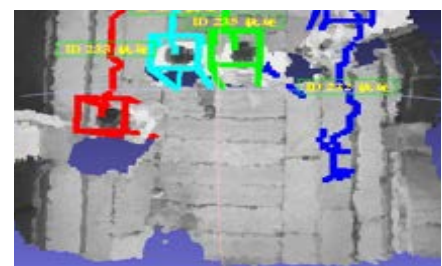
Anti-Interference

- Shadow or other objects will not cause miscounting
- Camera can identify two person as long as there is space between two heads



Height Filtering

Based on the height information in the 3D axis, the target height should be in the range of the human height, thus filtering the interference of the cart, baby carriage, etc.

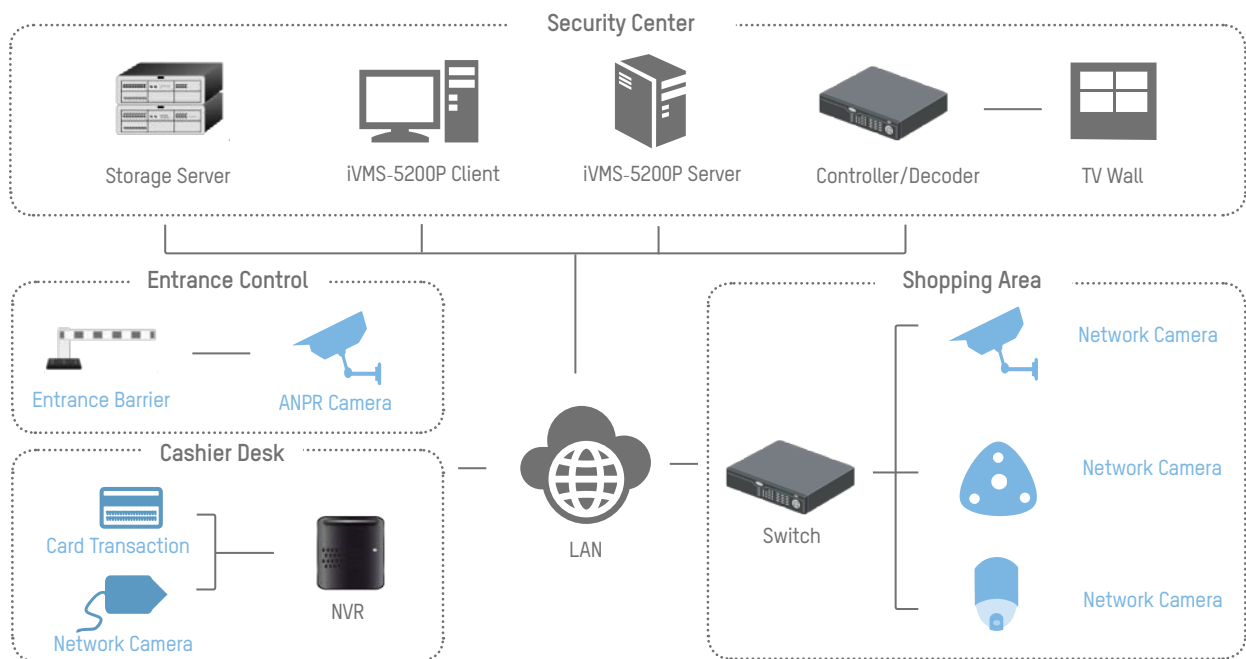


Loitering Filtering

The camera can focus on a target and track it until it disappears in the image, thus effectively filtering the repeated count of the loitering target.

SUPERMARKETS & CONVENIENCE STORES

SECURITY CENTER FOR RETAIL OPERATIONS



Storage Server



Modularized design and hot plugging for easy maintenance



Double controller & power module for data safety



Supports CVR mode for better return on investment



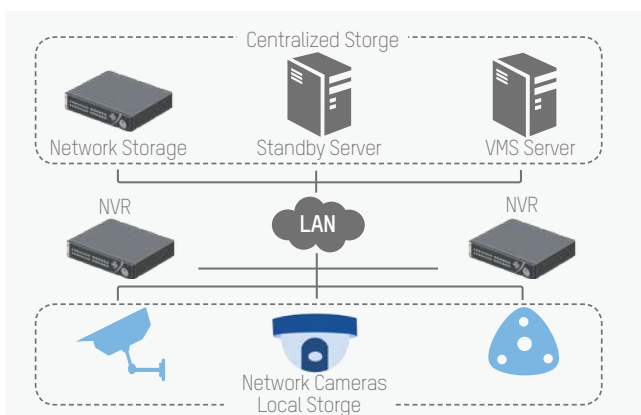
Decoder



Video Wall Controller



TV Wall



Data Safety Flexible Storage

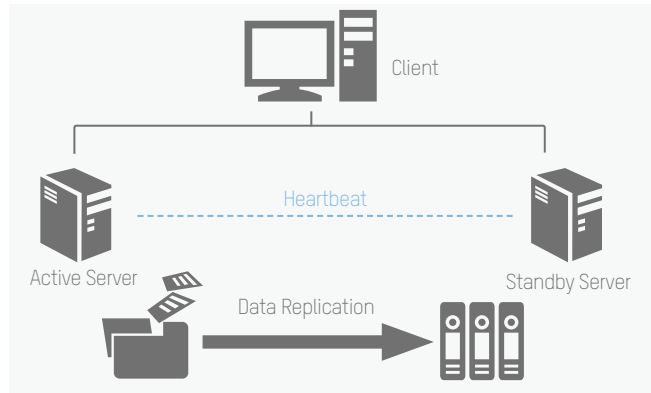
- 2-Layer storage for critical video recording
- NVRs for local storage – Reliable and cost effective
- Centralized storage for key video back-up in the control center

Data Safety

Server Redundancy Design



- Active & standby servers
- "Heartbeat" function automatically backs up users' information if one server is interrupted
- Ensures users' live view and playback in case of failover



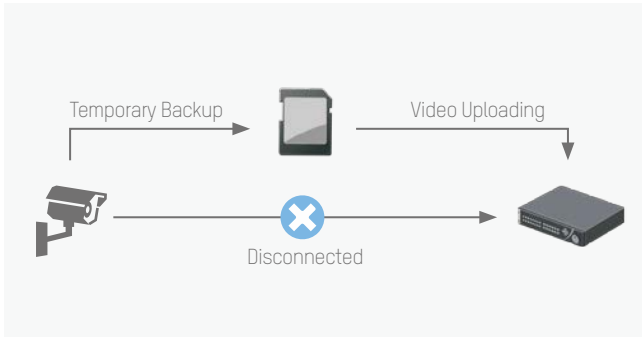
Data Safety

Auto Network Recovery (ANR)



Auto Network Recovery (ANR)

- Auto backup if network connection is interrupted
- Data moves from SD card to back-end device while network connection is restored
- We recommended using Hikvision brand Micro SD card for ANR storage



Data Safety

RAID & N+1 Failover

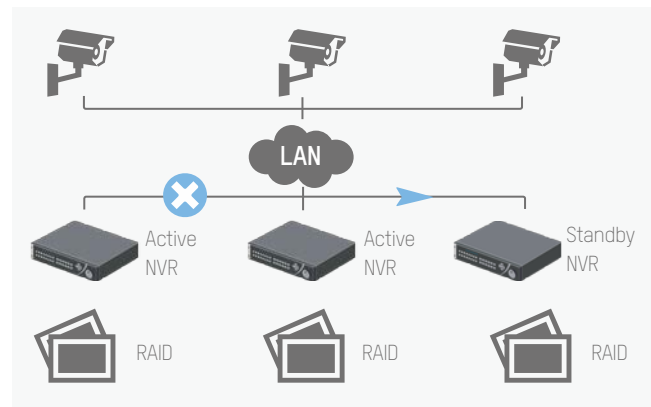


Single-spot storage backup:

Multi-RAID supported by embedded NVR and Storage Server

Multi-spot storage backup:

When any active NVR is out of service, the standby NVR can take over recording automatically

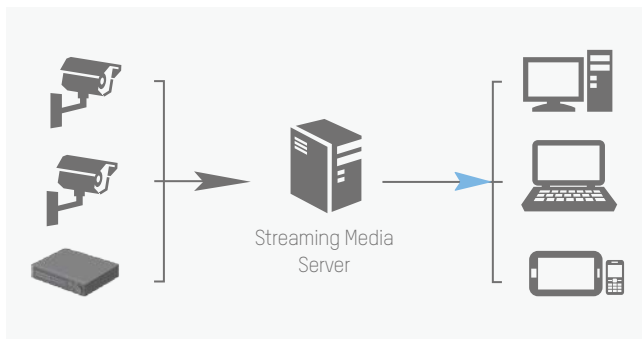


Transmission Optimization

Streaming Media Server



- Hikvision Streaming Media Servers enable multiple users to view live or playback the same camera using only one channel of bandwidth transmission
- 1 Streaming Media Server supports up to 200 x 2 Mbps video data streaming and up to 200 channels

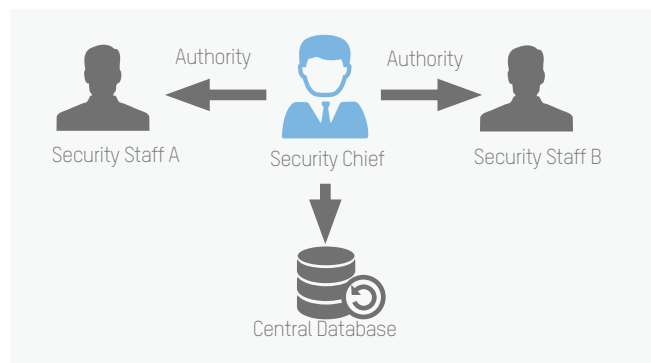


Centralized Management

Security Operator Authority



- Centralized management of security personnel and authorities
- Security personnel have assigned authority levels, such as live view, playback, area cameras, or PTZ control
- Higher permission-level users have priority control over the system, i.e., they can takeover PTZ control, force the logout of lower-level users, and more



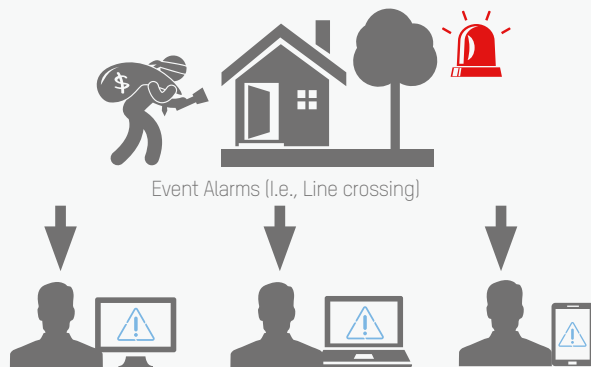
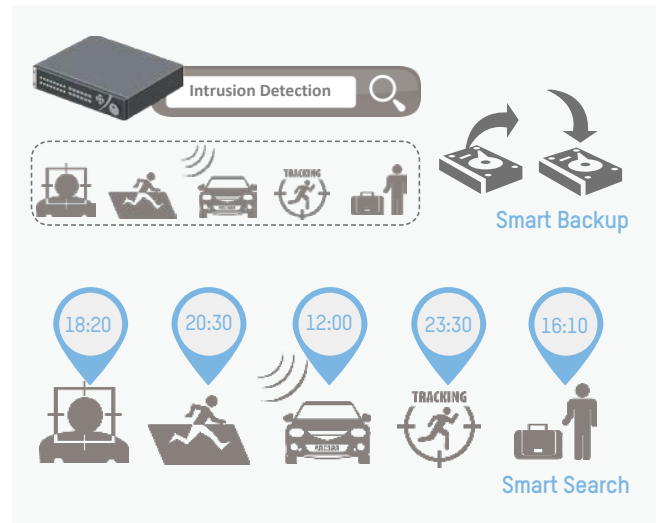
Large Data Management

Smart Backup

- Supports event footage backup
- Saves maximum storage space
- Fully compatible with Hikvision Smart IP Cameras

Smart Search

- Easy and quick event search for snapshots and video recording
- Plays back the target event footage at standard speed and can fast-forward (up to 16x)
- Unrelated video can be skipped during playback

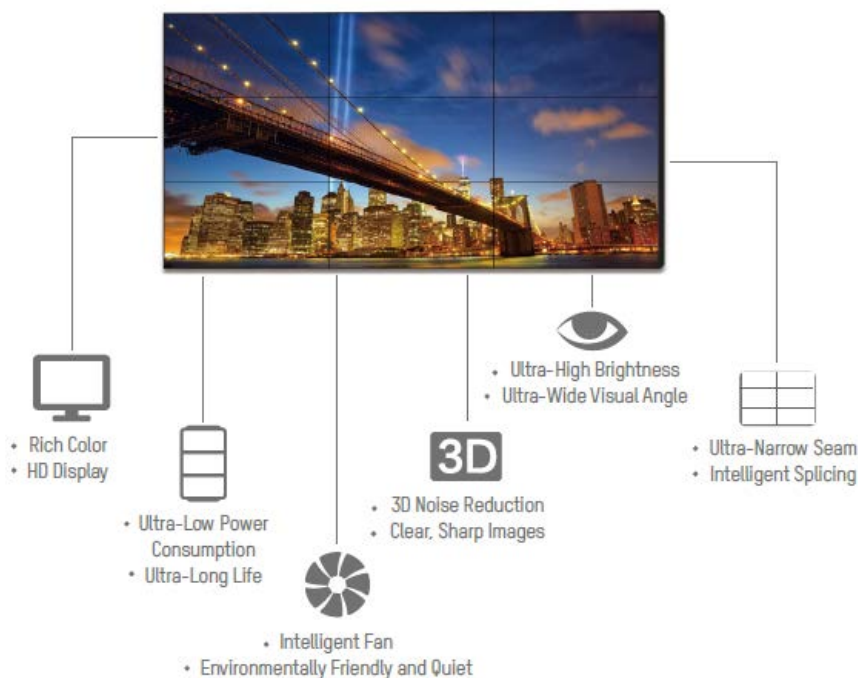


Centralized Management

Alarm Verification and Handling

- Various types of events trigger real-time alarms and notifications to security operators, like motion detection, line crossing, intrusion detection, face detection, etc.
- Alarm flashing in E-Map notifies security operators
- Alarms link to predefined cameras in the form of pop-up images/video for visual verification
- One-check-all mechanism allows one user to handle alarm events while others get notifications

SECURITY CENTER VIDEO-WALL DISPLAY UNIT LCD/DLP/LED



LCD

DS-2046NL-B,
DS-2046NL-C,
DS-2046NH-C,
DS-2055NL-B,
DS-2055NH-B

DLP

DS-D1050EH,
DS-D1060EH,
DS-D1067EH,
DS-D1080EH,
DS-D1070EF

LED

DS-D4012FI-EL,
DS-D4018FI

PRODUCT SHOWCASE

Entrance



DS-2CD4025FWD(-AP)
LightFighter Series 2MP Indoor
Box Network Camera



- LightFighter 140dB triple exposure WDR
- 1/2.8" progressive scan CMOS sensor
- Full HD1080p, up to 60fps
- Full smart feature-set
- Auto back focus
- P-Iris optional



DS-2CD4125FWD-IZ
LightFighter Series 2MP Indoor
Dome Network Camera



- LightFighter 140dB triple exposure WDR
- 1/2.8" progressive scan CMOS sensor
- Full HD1080p, up to 60fps
- Full smart feature-set
- Motorized lens with Smart Focus
- Up to 128GB on-board storage
- Up to 30m IR range

Shopping Area



DS-2CD63C2F-I (S)(V)
12MP Fisheye Network
Camera

- 360° panoramic view
- Up to 4000 × 3072@20fps resolution
- Up to 1600 × 1200 ePTZ control
- Heat mapping analytic
- Support on-board hardware dewarping
- Support software de-warping
- IP66 & Vandal-proof (-V)
- Up to 15m IR



DS-2DE4A220IW-DE
3MP/2MP 20X Mini PTZ Dome
Network Camera

NEW

- 3MP/2MP real-time, 20X Optical Zoom
- Pan 0° to 360°; Tilt -5° to 90°
- Up to 50m IR range, prevent IR reflection
- New-generation bubble, prevent blurs at any angle
- IP66; MIC: Customizable



DS-2CD4026FWD-AP
DarkFighter series 2MP Box
Network Camera



- DarkFighter ultra-low light technology
- 1/1.8" progressive scan CMOS sensor
- Full HD1080p, up to 60fps
- 120dB WDR
- Full smart feature-set
- Auto back focus
- P-Iris optional



DS-2CD4126FWD-IZ
2MP Ultra Low Light Indoor
Dome



- DarkFighter ultra-low light technology
- 1/1.8" progressive scan CMOS sensor
- Full HD1080p, up to 60fps
- 120dB WDR
- Full smart feature-set
- Motorized lens with Smart Focus
- Up to 128GB on-board storage
- Up to 30m IR range

SUPERMARKETS & CONVENIENCE STORES



NEW
DS-2CD4C26FWD-AP
DarkFighter series 2MP Box
Network Camera

DARKFIGHTER

- H.265+/H.264+/H.265/H.264
- DarkFighter ultra-low light technology
- 1/1.8" progressive scan CMOS sensor
- Full HD1080p
- 120dB WDR
- Intrusion & line crossing & object removal & unattended baggage & face detection & Region Entrance/Left & Scene Change
- Up to 128GB on-board storage



NEW
DS-2CD4D26FWD-IZ(S)
DarkFighter Lite Series 2MP
Dome Network Camera

DARKFIGHTER

- DarkFighter ultra-low light technology
- 1/1.8" progressive scan CMOS sensor
- Color:0.002Lux/F1.2, B/W:0.0002Lux/F1.2
- Full HD1080P
- 120dB WDR
- Up to 128GB on-board storage
- EXIR, prevent IR reflection
- IP66

Convenience Stores



NEW
DS-2CD2125FWD-IM
2MP EXIR HDMI Dome
Camera

- Up to 2.0 megapixel high resolution
- Max. 1920 × 1080 @30fps
- 2.8 mm/4 mm/6 mm/8 mm/12 mm fixed lens
- Ultra-low light
- H.265, H.265+, H.264+, H.264
- 120dB Wide Dynamic Range
- 3D Digital Noise Reduction
- HDMI
- PoE (802.3af)
- IR range: up to 30 m
- Support on-board storage, up to 128 G
- IP67, IK10
- 3-axis adjustment



DS-2CD 2522/42 FWD-I(W)(S)
2MP/4MP Mini Dome camera

- 2MP/4MP Full HD1080P resolution
- 120 dB WDR
- 2.8 / 4 mm fixed lens
- Supports 64 GB on-board storage
- 3-axis adjustment
- Up to 10 m IR
- IP66 & IK8 protection
- Audio output/mic optional (-S)
- Alarm I/O (-S)
- Built-in Wi-Fi (-W)
- H.264+ Smart Codec
- 12 VDC & PoE

Parking Lot



DS-2CD6986F (-H)
8MP 180° Panoramic
Network Camera

PanoVu

- 4x 2MP DarkFighter imagers
- On-board stitching, up to 8 MP resolution
- Up to 4096 × 1800 180°panoramic view
- 5 mm fixed lens
- Ultra low-light capability
- Supports on-board storage, up to 128 GB
- Audio/alarm I/O interfaces
- IP66 weather-resistant protection
- 12 VDC & PoE power supply
- Built-in heater & fan optional (-H)



DS-2CD4626FWD-IZ(H)(S)
DarkFighter Series 2MP Bullet
Network Camera

DARKFIGHTER

- DarkFighter ultra-low light technology
- 1/1.8" progressive scan CMOS sensor
- Full HD1080p, up to 60fps
- 120dB WDR
- Full smart feature-set
- Motorized lens with Smart Focus
- Up to 128GB on-board storage
- Up to 70m IR range
- IP66, IK10

PRODUCT SHOWCASE



DS-2CD4A26FWD-IZ(S)(H)/P
2MP ANPR Ultra-Low Light
Bullet Camera

DARKFIGHTER

- DarkFighter ultra-low light technology
- License Plate Recognition
- 1/1.8" progressive scan CMOS sensor
- Full HD1080p, up to 60fps
- 120dB WDR
- Full smart feature-set
- Motorized lens with Smart Focus
- Up to 128GB on-board storage
- Up to 50m IR range
- IP67



NEW
DS-2CD4B26FWD-IZ(S)
DarkFighter Lite Series 2MP
Bullet Network Camera

DARKFIGHTER

- DarkFighter ultra-low light technology
- 1/1.8" progressive scan CMOS sensor
- Color:0.002Lux/F1.2, B/W:0.0002Lux/F1.2
- Full HD1080P
- 120dB WDR
- Up to 128GB on-board storage
- Up to 120m IR range
- IP67



DS-2DF8236IX-AEL (W)
DarkFighter series 2MP 36X
IR PTZ Network Camera

DARKFIGHTER

- H.265+/H.265/H.264+/H.264
- ultra-low illumination technology
- 1/1.9" HD CMOS sensor
- 1920*1080P Full HD, 36X Optical Zoom
- Smart features (smart tracking, etc), optical defog
- 120dB WDR
- 200m IR distance
- Wiper for self-cleaning(-W)
- Vandal-proof (IK10)

People Counting



NEW
IDS-2CD6810F/C
Dual-Lens People
Counting Camera

- 1/3" Progressive Scan CMOS
- Max. resolution 640 × 960
- 2 mm/2.8 mm lens, optional
- 3D digital noise reduction
- DC 12V/PoE
- Dual lens, dual CPU, support stereo views
- Specialized people counting function, support separate counting of people entering, exiting, and passing by
- Flash memory storing people counting data

Security Center



DS-96128/256NI-I16/I24(H)
Embedded H.265+ 4K Super NVR

- 576/768Mbps Bit Rate input Max (up to 128/256 IP cameras Input)
- Up to 12MP resolution recording
- Support H.265+/H.265/H.264+/H.264 video formats
- 20-ch/(H,68-ch) 1080P decoding capability
- HDMI output at up to 4K resolution
- Up to 16/24 SATA interfaces, up to 8 TB for each
- HDD,4 Gigabit optical interfaces
- Redundant power supply to ensure system stability
- HDD hot swapping with RAID 0/1/5/6/10
- One LCD screen optional , mini SAS optional



DS-9616/32/64NI-I8/I16
Embedded H.265+ 4K
2U/3U NVR

- 256/320 Mbps Bit Rate Input Max(up to 16/32/64-ch IP cameras input)
- Third-party network cameras supported
- Up to 12MP resolution recording
- Support H.265+/H.265/H.264+/MPEG4 video formats
- 2-ch HDMI and 2-ch VGA outputs interfaces provided,
- 1 HDMI output at up to 4K resolution
- 8/16 SATA, HDD hot swapping , 1 eSATA,2 USB2.0, 1 USB3.0
- Support RAID0,1,5,6,10
- Hot spare working mode

SUPERMARKETS & CONVENIENCE STORES



iDS-9632NXI-I8/S8/16S NEW
Deepinmind NVR

- Human body detection and analysis, up to 8-ch detection capacity
- Enhance decoding capability and bandwidth up to 8-ch@1080P decoding capacity
Bandwidth: 320Mbps input/256Mbps output
Up to 12MP IP camera access
- H.265+/H.265/H.264+/H.264 video standard compatible
- 2 HDMI/2 VGA, HDMI1 output at up to 4K/60HZ
- Smart 2.0 function and APNR
- Support 8 HDDs (8TB/Disk) and Raid (Raid 0/1/5/6/10)
- N+1 hot spare



DS-A81016S
Network Storage System

- High performance 64 bit RISC processor
- Up to 16 HDD, 4TB maximum capacity for each
- Up to 180-ch 4CIF real-time recording
- iSCSI/NFS/CIFS/FTP/HTTP/AFP protocols
- Support RAID 0, 1, 3, 5, 10, 50
- Support HDD hot-swapping
- Dual Gigabit network interfaces
- Modularized design for easy maintenance
- Redundant power design for high reliability



DS-A82024D
Network Storage System

- High-performance & easily-extensible hardware platform
- Highly reliable system design, double controller
- Support 256 -Ch(2M) record and play in IP-SAN mode, 448 -Ch(2M) record and play in CVR mode
- Disk detection, repair and RAID optimization
- Low power design
- Massive storage space, 4U chassis with 14 HDs and cascade extension support



DS-C10S-S11/22/41/E
TV Wall Controller

- Maximum 184-ch analog, or 92-ch TVI or 92-ch HDMI/DVI/VGA input
- Maximum 72-ch HDMI/DVI/VGA output
- Up to 72-piece screen joint
- Built-in Matrix
- Supports jointing, division, and display
- Base map
- Cross-window video roaming
- Support hot plugging
- Redundant power supply



DS-6901/04/08/10/12/16UD
Ultra High Definition Decoder

- Decoding capacity:
12MP at 20fps: 2 channels;
8MP at 30fps: 4 channels;
5MP at 30fps: 6 channel;
3MP at 30fps: 10 channel;
1080p at 30fps: 16 channel;
- provide HDMI (adaptable to DVI-D) and BNC output interfaces.
- Up to 4K (3840 × 2160@30Hz) via HDMI output interfaces (only for even interface).
- H.265+/H.265, H.264+/H.264, MPEG4 and MJPEG video compression.
- G.722, G711A, G726, G711U, MPEG2-L2, and AAC audio compression



DS-D2046NL/H -C
DS-D2055NL/H -B
Ultra Slim Bezel LCD

- 46" or 55" screen dimension
- -NL: 500cd/ m² brightness
- -NH: 800cd/ m² brightness
- 3.5mm physical seam
- Defog, low-light compensation
- Edge processing, true native image
- Dynamic self-adaption noise reduction
- Cross color suppression
- Signal input: HDMI, DVI, VGA, BNC, YPbPr
- Signal output: DVI, VGA, BNC
- Remote control: IR in, Address ID
- RS232 control

PRODUCT SHOWCASE



DS-D5032FL
DS-D5022FC
32"/22" LCD Monitor

- LED backlit with 1920×1080 HD resolution
- View angle:
178°(H)/178°(V)(32")
170°(H)/160°(V) (22")
- Inputs: HDMI, VGA, DVI, CVBS(BNC×1), audio in
- Build-in speaker
- 3D comb filter, 3D de-interlace, 3D noise reduction
- Selectable signal source (32")
- Image freeze (32")
- High reliable components for 7×24 working



Blazer Pro 128/256/16H
VMS All-in-One Server

- Ready to use, preinstalled with Hikvision Professional VMS software and Windows 8.1;
- Up to 128/256 channels access and recording, recording bandwidth up to 512/718 Mbps;
- 16HDD, HDD hot swap with RAID0, RAID1, RAID5, RAID10 support;
- Active directory integration for user management;
- 100 client user support;
- 3 years of Hardware warranty and software technical support with SSP.



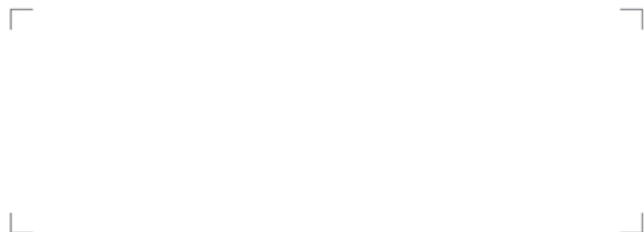
iVMS 5200 Pro
iVMS-5200 Professional
Software

- Centralized equipment and user management
- Support ANPR and ANPR based parking management
- Support business intelligence & POS integration
- Support RSM to control 5 CMS for large system (New)
- Maximum connected devices per CMS: 1024
- 3rd party surveillance integration via ONVIF protocol and SDK
- Mobile transportation management module



MAXIMIZE BUSINESS EFFICIENCY
AND INTELLIGENCE
SMART RETAIL SOLUTION
FOR SUPERMARKETS &
CONVENIENCE STORES

Distributed by



HIKVISION®

Headquarters

No.555 Qianmo Road, Binjiang District,
Hangzhou 310051, China
T +86-571-8807-5998
overseasbusiness@hikvision.com

Hikvision USA
T +1-909-895-0400
sales.usa@hikvision.com

Hikvision Italy
T +39-0438-6902
info.it@hikvision.com

Hikvision Singapore
T +65-6684-4718
sg@hikvision.com

Hikvision Africa
Tel: +27 (0) 0351172
sale.africa@hikvision.com

Hikvision Europe
T +31-23-55-42-770
info.eu@hikvision.com

Hikvision France
T +33(0)1-85-330-450
info.fr@hikvision.com

Hikvision Oceania
T +61-2-8599-4233
salesau@hikvision.com

Hikvision Turkey
T +90-216-521-70-70
sales.tr@hikvision.com

Hikvision Middle East
T +971-4-8816086
salesme@hikvision.com

Hikvision Spain
T +34-91-737-16-55
info.es@hikvision.com

Hikvision Canada
T +1-909-895-0400
sales.usa@hikvision.com

Hikvision Kazakhstan
T +7-727-9730667
nikia.panfilov@hikvision.ru

Hikvision Russia
T +7-495-669-67-99
saleru@hikvision.com

Hikvision Poland
T +48-22-460-01-50
poland@hikvision.com

Hikvision Korea
T +82-31-731-8841
sales.korea@hikvision.com

Hikvision Hong Kong
T +852-2151-1761
info.hk@hikvision.com

Hikvision India
T +91-22-28469900
sales@pramahikvision.com

Hikvision UK
T +01628-902140
support.uk@hikvision.com

Hikvision Brazil
T +55 11 3318-0050
Latam.support@hikvision.com

Follow us on social media to get the latest product and solution information



Hikvision



HikvisionHQ



HikvisionHQ



Hikvision
Corporate Channel

www.hikvision.com

