



# ESSENTIAL PROTECTION FOR OUR MOST VALUABLE TREASURES SMART EDUCATION SOLUTION

 smart solution **2.0**

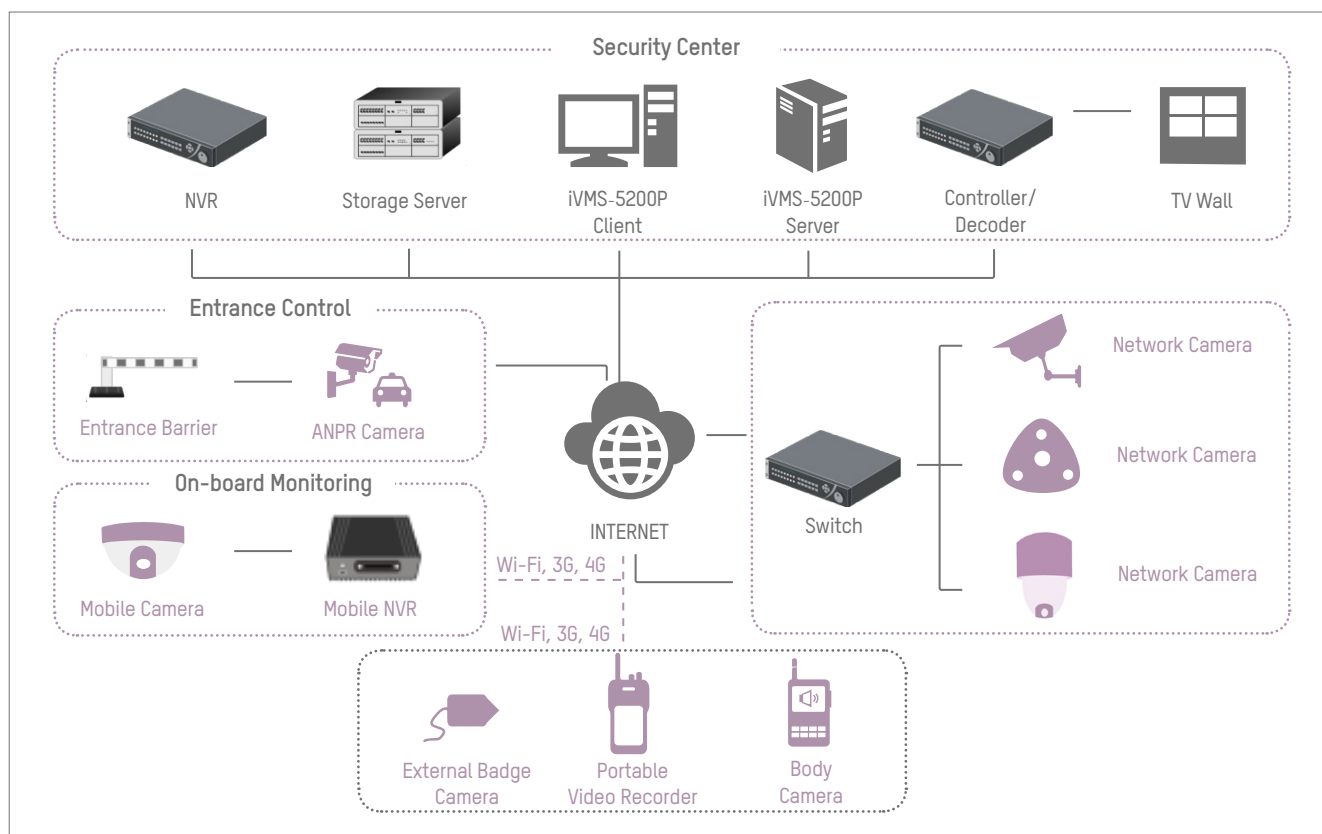


Is anything more important than our children? Protecting students at their schools, learning centers, and campus facilities of all kinds has become more critical than ever. Because of their vulnerabilities, schools around the world have been targeted by criminals. Hikvision's Smart Solution for Schools and Campuses secures educational facilities with its advanced technology, powerful cameras, and critical recording devices. In protecting these places of learning, development, and exploration, campus security personnel worldwide will find this surveillance solution from Hikvision to be an absolutely essential asset.

## SMART SOLUTION FOR SCHOOL FACILITIES AND CAMPUS

- Ensure the security for students and staff
- Prevent school violence and valuable items theft
- Help authority to investigate incidents and identify suspects
- Increase campus management efficiency





### Security Center

System reliability, Data safety, Prompt Event Response.



### Perimeter & Playground

High performance PTZ cameras realize around-the-clock guarding and detecting tasks for this large area.



### On-board Monitoring

Completed IP systems for monitoring track school bus' routine



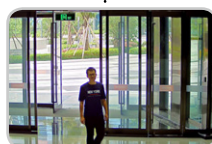
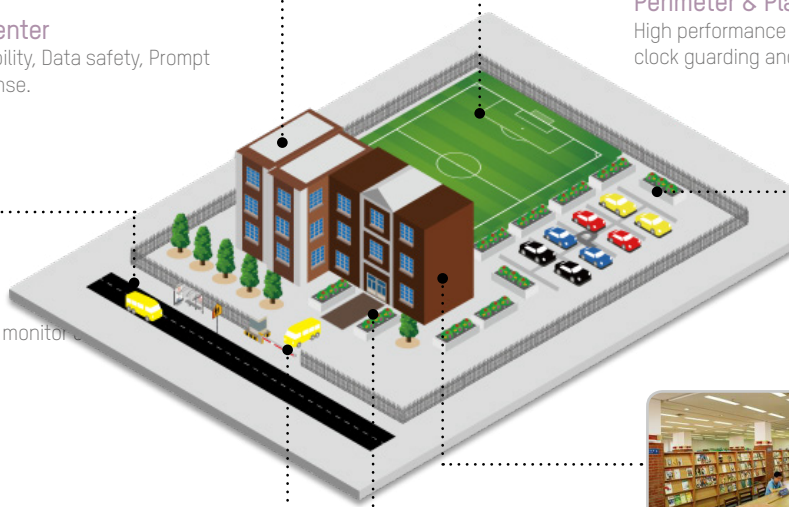
### Parking Area

Ultra low-light four imagers camera for one covering all monitoring.



### Vehicle Access Control

ANPR camera with barrier linkage, B/W list filtering to manage authorized vehicle entrance & exit.



### Building Entrance

Clear visibility and high resolution quality in strong sunlight condition.



### Library & Computer Room

Ultra low light camera to see everything during on or off-duty.

### Lobby

High resolution fisheye camera for panoramic view

### Hallway

Mini sized camera with less intrusive, and also Rotate mode support for vertical-shaped area

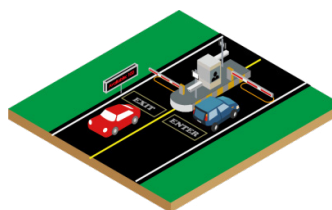
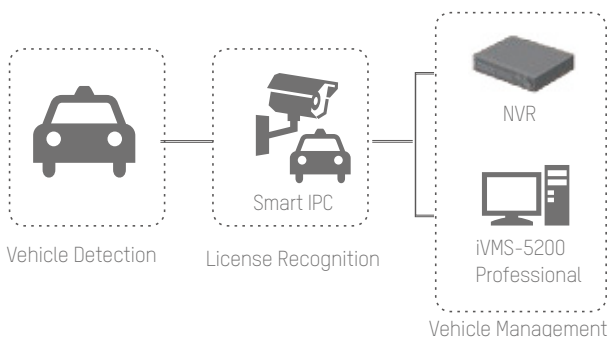
## Vehicle Access Control



Hikvision Vehicle Access system combines high quality ANPR cameras and back-end devices to create barrier linkage, B/W list filtering, and alarm triggering.

**ANPR cameras:** These cameras support HD video, are weather-proof, and provide ultra-low-light vision and barrier linkage.

*\* ANPR support requires a customized process, and the availability of regional Hikvision LPR support varies based on local algorithm development.*



*\* The exact functionalities may vary based on local strategy and product development.*

### Hikvision ANPR System

- Auto License Plate Comparison
- B/W List Filtering
- Alarm Triggering
- Result Query
- Result Export
- Auto Network Recovery (ANR)
- ANPR Remote Configuration
- Lot Availability Display
- Manual LPR Correction
- Customizable Message Display
- Overtime Alarming

## Parking Monitoring



Hikvision has a complete product solution for monitoring very large areas and detecting suspicious targets, even in dim light conditions. Additionally, our iVMS platform and LED indicators manage and display the availability of public parking spaces.

**PanoVu Panoramic Camera:** Four innovative Darkfighter imagers can deliver a panoramic view with ultra-low-light vision, effectively covering entire parking areas.



4 x rotated images in 1920x1080 resolution

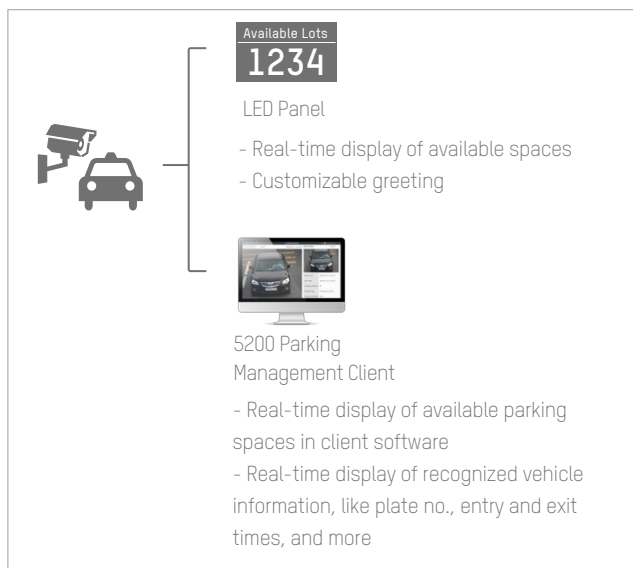


**PanoVu**



Stitching to one panoramic image in (4096x1800) resolution

### Real-Time Information Display and Parking Events



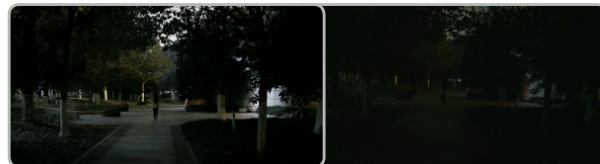
*\* Note: LED indicators are not in Hikvision oversea standard product portfolio and 3rd party LED indicators support may require customization process for actual project. For more technical information, please contact Hikvision local technical support team*

## Playground & Perimeter



School playground or perimeter areas are difficult to monitor every angle and vulnerable to potential criminalities such as school violence.

**Darkfighter Cameras:** From 36x IR PTZ to outdoor bullet, Hikvision's full range of Darkfighter cameras allows to see clearly what goes on in these locations.



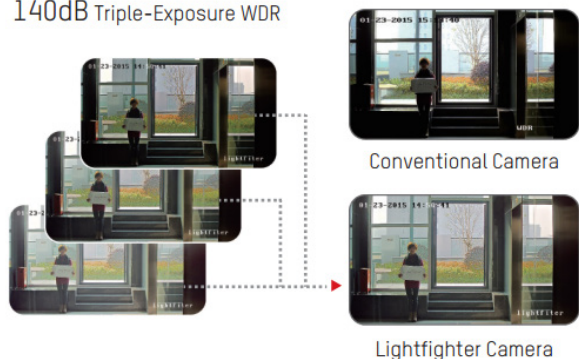
## Entrance & Lobby



In school, the main entrance and lobby areas are the most frequented locations that require high detailed facial images even in high lighting contrast environment.

- **Super WDR camera:** Hikvision Lightfighter series cameras can reach up to 140dB Wide Dynamic Range for obtaining a crystal clear image quality even in high contrast sunshine environment.
- **4K Ultra HD camera:** from fixed box camera with dedicated wide angle lens to panoramic fisheye camera, Hikvision has a full range of 4K products to meet highest definition requirement.

### 140dB Triple-Exposure WDR

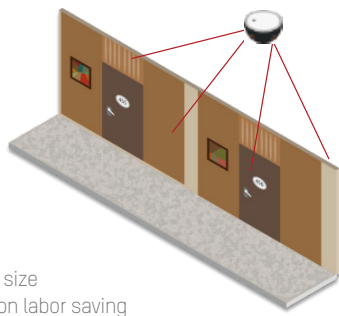




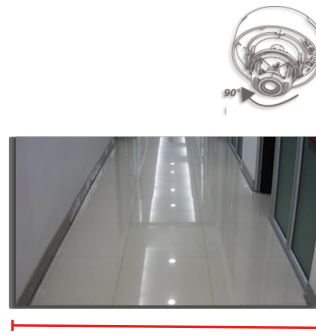
## Hallway & Corridor



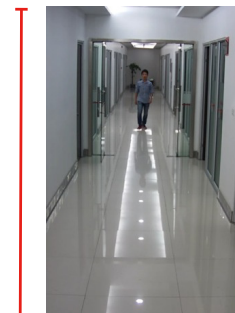
The traditional bulky box type or dome type cameras brings a visible security presence for deterrence purpose. However, Hikvision's mini & covert series cameras can give a more discreet and less intrusive solution to create a comfortable interior environment.



- Compact size
- Installation labor saving
- One camera delivers two different monitoring views



Horizontal shape

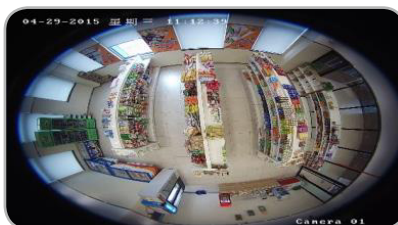


Rotate Mode

## Library & Computer Room



In this spacious areas, less camera counts means less installation & labor fees. A high definition panoramic solution is ideal for these areas to get a maximum monitoring views and image quality insurance.



Fisheye



Fisheye + 3 PTZ



2 x Panoramic + 3 x PTZ



2 x Panoramic



4 x PTZ

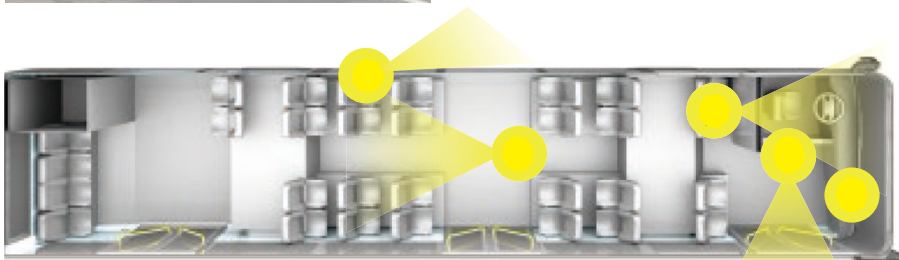
## School Bus Tracking



On-road safety is the most concerned issue for school kids. Therefore school buses' security becomes number one demand for education authorities and school facilities' owner.

Hikvision has a full range of products to help transit authorities to deter, prevent abnormal activities and for post-event investigation as well.

**City Bus On-board System:** High definition IP or HD-TVI on-board system, dedicated GIS platform for wireless video live view and real-time tracking.



### NETWORK

- Full HD Video
- Inner/outer vehicle
- 4/8-ch recorder



## Mobile Enforcement Solutions - Typical application



Incident Occurs



Forensic Capture

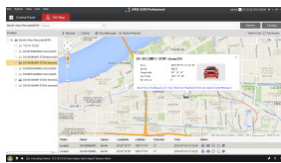


Post-Event Investigation

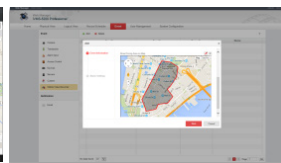


Instant Communication

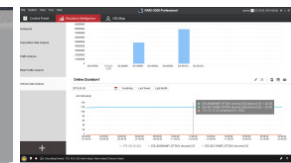
## Security Center



Real-time Tracking



Routine Playback



Exception Alarming

Instant Messaging

Analytic Reporting

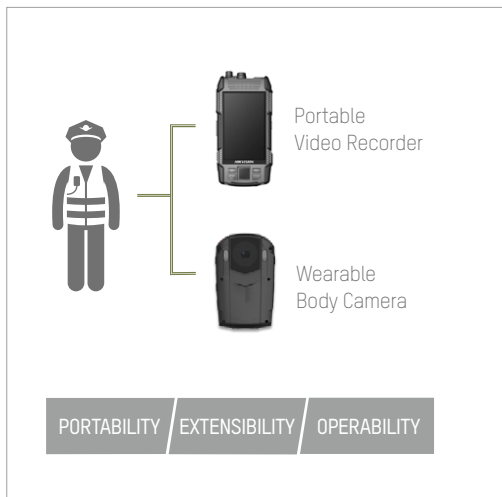
Comprising all the important video footage of daily operations, bank office's security center is a core of total CCTV system that requires utmost reliability and manageability for data protection and alarming operations.

• **Embedded NVR:** Hikvision has the richest embedded network recorder product line – from 4 channels to 256 channels – for every level of need

• **Video Management Platform:** iVMS-5200 Professional Video Platform is the CCTV system core that manages, views, plays back, and controls all the daily operations among all devices

• **Network Storage Server:** A must-have product line for total secure data storage

• **Monitor Display System:** From standalone monitors to large TV walls, Hikvision has it all



Private Security Guard: Hikvision hand-held security cameras can help private guarding team to keep valuable video footages for post-investigations.



Storage Server



Modularized design and hot plugging for easy maintenance



Double controller & power module for data safety



Supports CVR mode for better return on investment



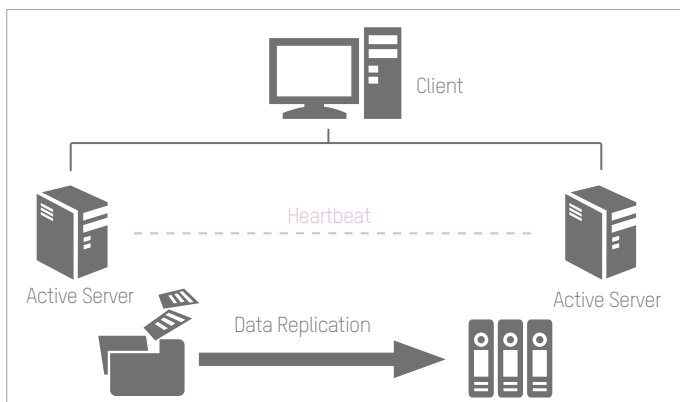
Decoder



Video Wall Controller



TV Wall

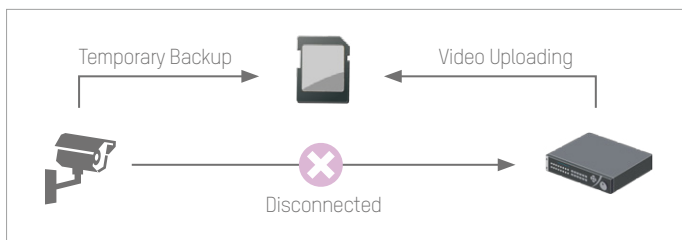


### Data Safety

#### Server Redundancy Design

- Active & standby servers
- "Heartbeat" function automatically backs up users' information if one server is interrupted
- Ensures users' live view and playback in case of failover

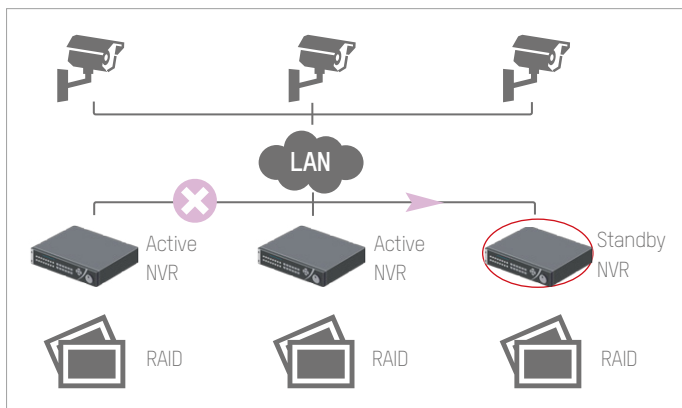




### Data Safety

#### Auto Network Recovery (ANR)

- Auto backup if network connection is interrupted
- Data moves from SD card to back-end device while network connection is restored
- We recommended using Hikvision brand Micro SD card for ANR storage



### Data Safety

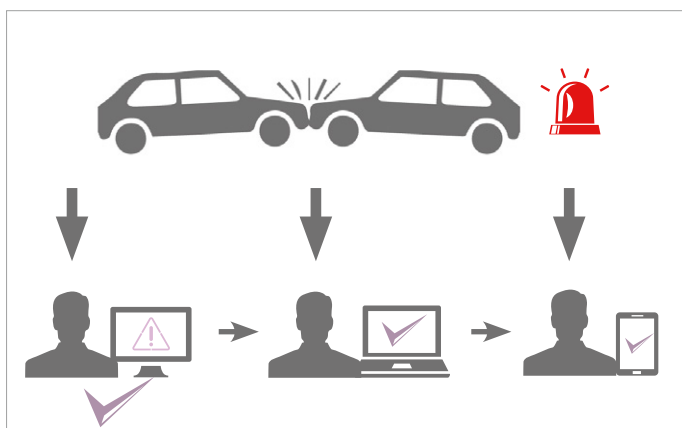
#### RAID & N+1 Failover

##### - Single-spot storage backup:

Multi-RAID supported by embedded NVR and Storage Server

##### - Multi-spot storage backup:

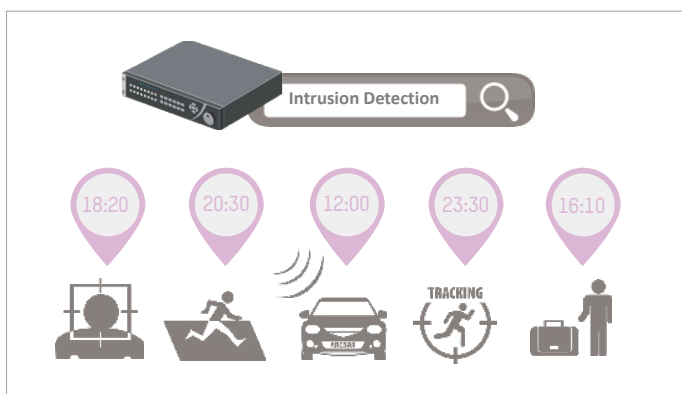
When any active NVR is out of service, the standby NVR can take over recording automatically



### Alarm Management

#### Multi-users Notification

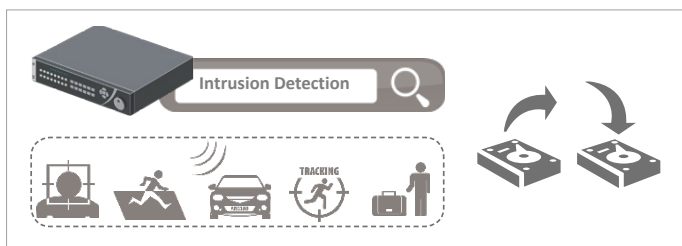
- Real-time alarm notifications sent to iVMS5200P's control clients
- Even mobile clients can receive notifications
- One-Check-All mechanism allows one user to handle the event and others to simply receive notification



### Large Data Management

#### Smart Search

- Fully compatible with Hikvision Smart IP Cameras
- Easy and quick event search for snapshots and video recording
- Plays back the target event footage at standard speed and can fast-forward (up to 16x)
- Unrelated video can be skipped during playback



### Large Data Management

#### Smart Backup

- Supports event footage backup
- Saves maximum storage space



# APPLICATION REFERENCE



## ■ Texans Can Academies, USA

Hikvision Easy IP Solution was applied in the Texans Can campuses to protect people at the schools, and to provide visibility into other assets, including those for the auction site – Texans Can's sister organization Cars for Kids.

**"When we research a product, we look for something that makes sense to the customer and makes sense to us. We're thrilled to deliver Hikvision security solutions to Texans Can."** – Chad Dawald, vice president and general manager of ASG, Integrator



## ■ Prince of Wales Island International School, Malaysia

Hikvision provides an all-around solution for the students' education, full dormitory accommodations, and a large campus of Prince of Wales Island. Hikvision's WDR technology and low light capability are the highlight of the project to secure the sites 24 hours.

**"Hikvision products are great because with high definition, we are really able to identify who exactly is at a specific location – regardless of area."** – Maureen Khoo, Project Manager at IS Solutions and Consultancy Sdn Bhd in Malaysia



## ■ Kyoto University, Japan

Hikvision provided a solution that could both maintain their original analog CCTV system, and also have the ability to further upgrade to IP while still keeping the analog system; greatly helps the authority save on the total budget.

**"Like other Hikvision products, this unit is extremely stable. There were no technical concerns that might arise when working with other components – both pre-existing and into the future."** – Haoze Lu, Technical support advisor for Javatel, distributor



## ■ Montreal Schools, Canada

Hikvision fixed domes indoor and outdoors provided a high resolution solution, which allowed the Commission Scolaire Marguerite-Bourgeoys School Board to significantly elevate safety and security for the students, faculty and staff members.

**"The video quality provided by Hikvision cameras has been truly superb. Hikvision products demonstrated outstanding functionality for educational facilities. We are very happy with the outcome."** – Rémi Asselin, IT services director, Marguerite-Bourgeoys School Board.



## ■ Uka Tarsadia University, India

Hikvision offered an Easy IP Solution that with high resolution images, and superior IR capability for proper surveillance in off-hours, providing a secure environment for the 4200 students and 200 faculty members on this campus.

**"This camera's real-time video is much better than analog, which obviously serves the school's security goals to a higher degree. Furthermore, Hikvision's support really allowed us to customize this camera to our specific needs."** – Ketan Patel, owner of Master's Mind Technologies



## Vehicle Access Control



**DS-2CD4A26FWD-IZS(H)**  
ANPR Camera

**DARKFIGHTER**

- Darkfighter Ultra-low light technology
- 1920x1080 high resolution
- Full HD1080p video, up to 60fps
- 120dB WDR
- 2.8-12mm Motorized VF lens Smart Auto Focus
- Up to 50m IR range
- IP67 Weather-proof protection
- DC12V & PoE
- Support on-board storage, up to 128GB
- On-board ANPR Analytics, B/W list filtering
- Built-in Smart Heater (-H)
- Audio/Alarm IO connectors (-S)
- Support Barrier linkage via RS485

## Parking Monitoring



**DS-2DF8236I-AEL(W)**  
Outdoor PTZ Camera

**DARKFIGHTER**

- 1920x1080 Full HD high resolution
- Darkfighter Ultra Low Light
- 36x Optical Zoom
- Smart Auto Tracking
- Smart Detection
- Smart Defog
- Up to 200m IR range
- IP66 Weather-resistant housing
- IK10 Vandal-resistant protection
- AC24V & High PoE
- -W: with Wiper

## Playground & Perimeter



**DS-2CD4125FWD-IZ**  
LightFighter 140dB WDR  
Network Camera

- Up to 2 Megapixel high resolution
- Full HD1080p, up to 60fps
- Up to 30m IR
- Full Smart feature-set
- 140dB WDR with Triple Exposure
- 2.8-12mm Motorized VF lens
- Smart Auto Focus
- Audio/Alarm IO
- Support on-board storage, up to 128GB
- UP to 30m IR range
- IK10 vandal-proof housing
- DC12V, PoE power supply



**DS-2CD4626FWD-IZ (H)**  
Outdoor IR Bullet Camera

**DARKFIGHTER**

- 1920x1080 Full HD high resolution
- Darkfighter Ultra Low Light
- 2.8 - 12mm Vari-focal lens
- Smart Auto Focus
- Smart Detection & Alarm
- Smart Defog
- Up to 70m IR range
- IP66 Weather-resistant housing
- IK10 Vandal-resistant protection
- Built-in heater optional (-H)
- Support on-board storage
- Support H.264+ Smart Codec, up to 60% bandwidth&storage saving

## Entrance & Lobby



**DS-2CD4085F-A**  
Wide Angle 4K Network  
Camera

- Up to 4096 x 2160 high resolution
- Digital WDR, 3D DNR
- Auto Back Focus
- Audio/Alarm IO
- Support on-board storage, up to 128GB
- Wide angle lens: HF3417D-12MPIR
- 3.4mm F1.7 aperture with IR correction
- DC12V & AC24V & PoE
- Intrusion Detection, Line Crossing Detection, Object Left/removal Detection, Region Entering/Leaving Detection etc.



**DS-2CD4125FWD-IZ**  
LightFighter 140dB WDR  
Network Camera

**LIGHTFIGHTER**

- Up to 2 Megapixel high resolution
- Full HD1080p, up to 60fps
- Up to 30m IR
- Full Smart feature-set
- 140dB WDR with Triple Exposure
- 2.8-12mm Motorized VF lens
- Smart Auto Focus
- Audio/Alarm IO
- Support on-board storage, up to 128GB
- UP to 30m IR range
- IK10 vandal-proof housing
- DC12V, PoE power supply

## PRODUCT SHOWCASE

### Hallway & Corridor



**DS-2CD2E20F**  
Recessed-mount  
Dome Camera

- 1920x1080 high resolution
- Full HD1080p video
- Recessed mount for easy installation
- 4mm/2.8mm fixed lens
- Support 128GB on-board storage
- Support Rotate Mode for hallway location
- DC12V & PoE
- DWDR, 3D DNR
- Color cover optional (black/silver/golden)
- Built-in Wi-Fi (-W)



**DS-2CD6812D**  
MONOVU Dual Lens Camera

**MONOVU**

- 1280x960 high resolution for each lens
- 120dB WDR for single lens Independent lensadjustment
- Support 64GB on-board storage
- Built-in MIC
- Support Rotate Mode for hallway location
- Audio I/O
- DC12V
- Built-in Wi-Fi optional (-W)

### Library & Computer Room



**DS-2CD63C2F-I (S)(V)**  
12MP Fisheye  
Network Camera

- 360° Panoramic View
  - Up to 4000x3072 resolution, 20fps
  - ePTZ control, up to 1600x1600 resolution
  - Support Heat Mapping Analytic
  - Support People Counting (2015.07)
  - On-board hardware de-warping
  - Support software de-warping (via iVMS5200P)
  - 3 x IR LEDs, up to 15m IR range
  - Built-in MIC & speaker
  - -V: outdoor option with IP66 weather-resistant
  - -S: Audio/Alarm I/O interface option
- \*6MP & 3MP Fisheye is also available:  
DS-2CD6362F-I (up to 3072x2048, 25fps)  
DS-2CD6332FWD-I (up to 2048x1536, 25fps)

### School Bus Tracking



**DS-2CD6520DT-I(O)**  
Inner-vehicle Network Camera

- 1920x1080 high resolution
- Full HD1080p video
- Up to 10m IR LEDs
- 2.8mm/4mm fixed lens
- Built-in MIC
- Support DWDR and 3D DNR
- -I: M12 connection interface
- -O: RJ45 connection interface
- Optimized vibration-resistant design
- EN50155&EN50121 certification conformant
- IP54 & IK08 protection



**DS-2CD6520D-I(O)**  
Inner-vehicle Camera

- 1920x1080 high resolution
- Full HD1080p video
- Up to 10m IR LEDs
- 2.8mm/4mm fixed lens
- Built-in MIC
- Support DWDR and 3D DNR
- -I: M12 connection interface
- -O: RJ45 connection interface
- Optimized vibration-resistant design
- EN50155&EN50121 certification conformant
- IP66 & IK08 protection

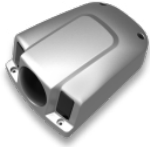


**DS-2CD6520ET-I(O)**  
Outer-vehicle Camera

- 1920x1080 high resolution
- Full HD1080p video
- Up to 30m IR LEDs
- 6mm fixed lens
- Support DWDR and 3D DNR
- 3-axis adjustment
- Optimized vibration-resistant design
- EN50155&EN50121 certification conformant
- IP68 & IK08 protection

## EDUCATION





**DS-2CD6510-I(0)**  
Outer-vehicle Camera

- 1280x960 high resolution
- HD720p video
- Up to 30m IR LEDs
- 4/6mm fixed lens
- Support DWDR and 3D DNR
- 3-axis adjustment
- -I: M12 connection interface
- -IO: RJ45 connection interface
- Optimized vibration-resistant design
- EN50155&EN50121 certification conformant
- IP68 & IK08 protection



**DS-M7508HNI**  
Mobile NVR

- 1920x1080 high resolution
- Pluggable 3G (WCDMA) and 4G module
- 8 IP cameras (1080P)
- 3-ch CVBS video outputs and 2-ch audio outputs
- 1-ch VGA video output at up to 1920x1080 resolution
- Two pluggable 2.5-inch HDDs / SSDs
- Hard disk box with USB interface supporting intelligent temperature control and data export
- M12 connectors ensuring signal stability
- Wide-range power input (+8VDC ~+36 VDC)
- Power-off protection avoiding key data from loss
- Aluminum die-cast chassis with no fan design well adaptable to working environment
- Die-cast aluminum classis(Anti-Vibration)



**DS-M5504HNI**  
4-ch Mobile NVR

- 1920x1080 high resolution
- Pluggable 3G (WCDMA) & GPS module
- 2-ch CVBS video outputs
- 1-ch VGA video output at up to 1920x1080 resolution
- Two pluggable 2.5-inch HDDs / SSDs
- Hard disk box with USB interface supporting intelligent temperature control and data export
- M12 connectors ensuring signal stability
- Wide-range power input (+8VDC ~+36 VDC)
- Power-off protection avoiding key data from loss
- Aluminum die-cast chassis with no fan design well adaptable to working environment
- Die-cast aluminum classis(Anti-Vibration)
- 4x IP cameras



**DS-6102HLI-T**  
Portable Video Recorder

- 1.2GHz processor, 1GB RAM, 32GB ROM
- Up to 32Gb external TF card slot
- Up to Full HD1080p video recording
- Android 4.1.2 Open Platform
- Up to 13MP (4208x3120) image capture
- 3.5-inch LCD touch screen, 800x480
- Support MIC, Bluetooth headset
- Support HDMI for video output
- Support 4G (FDD-LTE), 3G, Wi-Fi connection
- Support Fingerprint identification
- Built-in GPS, G-sensor, temperature sensor
- 2000mAh Lithium battery, 4.5h working time
- Up to 60 hours standby time
- IP66 weather-proof, 1.5m drop-proof protection



**DS-MH2111**  
Body Camera

- Up to Full HD1080p video recording
- Up to 16MP image capture
- 2-inch LCD screen
- Built-in IR illuminators
- Support HDMI for video output
- Support 4G (FDD-LTE), 3G, Wi-Fi connection
- Built-in GPS, G-sensor, temperature sensor
- 4000mAh Lithium battery, 8h working time
- Up to 60 hours standby time
- IP67 weather-proof protection

## Security Center



**DS-96128/256NI-F16/F24 (/H)**  
Embedded Super NVR

- Maximum 400/640Mbps bitrate Input
- Support 3rd party network cameras
- Up to 8MP resolution recording
- HDMI & VGA output (1920x1080p)
- Support RAID0, 1, 5, 10
- Support redundant power supply
- F16: 16x SATA; F24: 24x SATA
- 1x eSATA, 1x mini SAS, 3x USB 2.0
- /H: support up to 12-ch HDMI output & LCD touch screen

## PRODUCT SHOWCASE



DS-9632/64NI-I8  
Embedded 4K NVR  
**4K**

- Maximum 320Mbps bitrate Input
- 200Mbps bitrate input (RAID enabled)
- Support 3rd party network cameras
- Up to 12MP resolution recording
- Support H.264/H.264+/H.265 video format
- 2x HDMI & 2x VGA output (3840x2160)
- Support RAID0, 1, 5, 10
- Support redundant power supply
- Dual digital network interfaces
- 8x SATA, 1x eSATA, 2x USB2.0, 1x USB3.0
- 19-inch rack-mounted 2U chassis



iVMS-5200 Professional  
Video Management Platform

- Centralized device & user management
- Maximum connected devices per system: 1024
- Maximum 16 control client
- Maximum 16 web client
- Maximum 24 mobile client
- Support 3rd party integration via ONVIF & SDK
- Additional add-on modules:
  - LPR: license plate recognition
  - Transaction: POS integration + CCTV footage
  - Business Intelligence: people counting, heat mapping and retail traffic analytic
  - GIS: Vehicle tracking, GEO fencing



DS-A81016S  
Network Storage System

- High performance 64 bit RISC processor
- Up to 16 HDD, 4TB maximum capacity for each
- Up to 180-ch 4CIF real-time recording
- iSCSI/NFS/CIFS/FTP/HTTP/AFP protocols
- Support RAID 0, 1, 3, 5, 10, 50
- Support HDD hot-swapping
- Dual Gigabit network interfaces
- Modularized design for easy maintenance
- Redundant power design for high reliability



DS-A82024D  
Network Storage System

- High performance & easy extensible hardware platform
- Double controller system design
- Automatic service takeover
- Disk detection, repairing and RAID optimization
- Low power consumption
- 4U chassis structure, support up to 24 HDDs and cascade extension



DS-M5504HNI  
4-ch Mobile NVR

- Up to 12MP/14fps resolution
- 1/4/6/8/9/16 division
- 1-ch DVI and 1-ch VGA signal input(Except DS-6401HDI-T)
- DS-6401 supports HDMI/VGA/BNC interfaces
- Other models support DVI/BNC interfaces (HDMI/VGA requires converter)
- PC signal to display on video wall
- Screen joint and display
- Cross-window video roaming
- Video fluency enhancement



DS-C10S-11/22/41/E  
TV Wall Controller

- Maximum 184-ch analog, or 92-ch TVI or 92-ch HDMI/DVI/VGA input
- Maximum 72-ch HDMI/DVI/VGA output
- up to 72pcs screen joint
- Built-in Matrix
- Support joint, division and display
- Base map
- Cross-window video roaming
- Support hot plug
- Redundant power supply





DS-D2046NL/H -C  
DS-D2055NL/H -B  
Ultra Slim Bezel LCD

- 46" or 55" screen dimension
- -NL: 500cd/  $m^2$  brightness
- -NH: 800cd/  $m^2$  brightness
- 3.5mm physical seam
- Defog, low-light compensation
- Edge processing, true native image
- Dynamic self-adaption noise reduction
- Cross color suppression
- Signal input: HDMI, DVI, VGA, BNC, YPbPr
- Signal output: DVI, VGA, BNC
- Remote control: IR in, Address ID
- RS232 control



DS-D5032FL 32-inch  
DS-D5022FL 22-inch  
LCD Monitor

- 8bit/10bit 2-ch LVDS(1920\*1080) Full HD1080P resolution
- Adopt 3D digital comb filter
- True color OSD and user-friendly operation menu
- Adopt mstar ACE-5 auto color and image enhancement engine, to improve image contrast, detail
- 1 channel HDMI 1.3 input interface support HDCP 1.2
- Support video output
- Support audio I/O



DS-1100KI  
Network Keyboard

- 7" TFT touch screen with 800×480 resolution
- Live view and video playback
- Video wall control
- 4-axis joystick
- Macro command operation
- Up to 255 analog domes by RS-485 connection
- Compatible with Hikvision IP cameras, DVR/NVR, decoder, matrix



## ESSENTIAL PROTECTION FOR OUR MOST VALUABLE TREASURES SMART EDUCATION SOLUTION

Distributed by



# HIKVISION

### Headquarters

No.555 Qianmo Road, Binjiang District,  
Hangzhou 310051, China  
T +86-571-8807-5998  
[overseasbusiness@hikvision.com](mailto:overseasbusiness@hikvision.com)

**Hikvision USA**  
T +1-909-895-0400  
[sales.usa@hikvision.com](mailto:sales.usa@hikvision.com)

**Hikvision Italy**  
T +39-0438-6902  
[info.it@hikvision.com](mailto:info.it@hikvision.com)

**Hikvision Singapore**  
T +65-6684-4718  
[sg@hikvision.com](mailto:sg@hikvision.com)

**Hikvision Africa**  
Tel: +27 (0) 0351172  
[sale.africa@hikvision.com](mailto:sale.africa@hikvision.com)

**Hikvision Europe**  
T +31-23-55-42-770  
[info.eu@hikvision.com](mailto:info.eu@hikvision.com)

**Hikvision France**  
T +33(0)1-85-330-444  
[info.fr@hikvision.com](mailto:info.fr@hikvision.com)

**Hikvision Oceania**  
T +61-2-8599-4233  
[salesau@hikvision.com](mailto:salesau@hikvision.com)

**Hikvision Hong Kong**  
T +852-2151-1761

**Hikvision Middle East**  
T +971-4-8816086  
[salesme@hikvision.com](mailto:salesme@hikvision.com)

**Hikvision Spain**  
T +34-91-737-16-55  
[info.es@hikvision.com](mailto:info.es@hikvision.com)

**Hikvision Canada**  
T +1-909-895-0400  
[sales.usa@hikvision.com](mailto:sales.usa@hikvision.com)

**Hikvision Russia**  
T +7-495-669-67-99  
[saleru@hikvision.com](mailto:saleru@hikvision.com)

**Hikvision Poland**  
T +48-22-460-01-50  
[poland@hikvision.com](mailto:poland@hikvision.com)

**Hikvision Korea**  
T +82-31-731-8841  
[sales.korea@hikvision.com](mailto:sales.korea@hikvision.com)

**Hikvision India**  
T +91-22-28469900  
[sales@pramahikvision.com](mailto:sales@pramahikvision.com)

**Hikvision UK**  
T +44-1628-9021-4  
[support.uk@hikvision.com](mailto:support.uk@hikvision.com)

**Hikvision Brazil**  
T +55 11 3318-0050  
[Latam.support@hikvision.com](mailto:Latam.support@hikvision.com)

