



Network Dome Camera

Quick Guide

V3.0.0

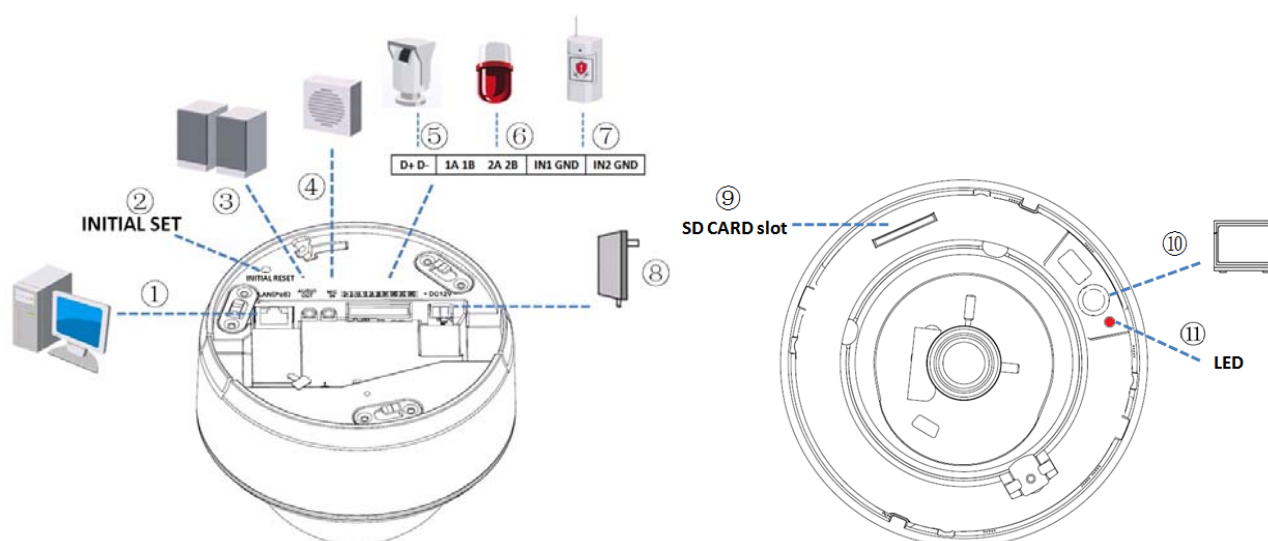


Hangzhou Hikvision Digital Technology Co., Ltd.

<http://www.hikvision.com>

2010-04

1.Camera Physical Description



Serial NO.	Description
1	LAN(PoE): 10M/100M self-adaptive Ethernet interface
2	INITIAL SET: Reset all parameters to factory default settings.
3	AUDIO OUT: Audio output interface
4	MIC IN: Audio input interface
5	D+, D-: RS-485 interface
6	1A 1B, 2A 2B: Alarm output interface
7	IN1 GND, IN2 GND: Alarm input interface
8	Power supply
9	SD card slot
10	Video output interface
11	Power LED indicator, which turns red when power is applied to the unit

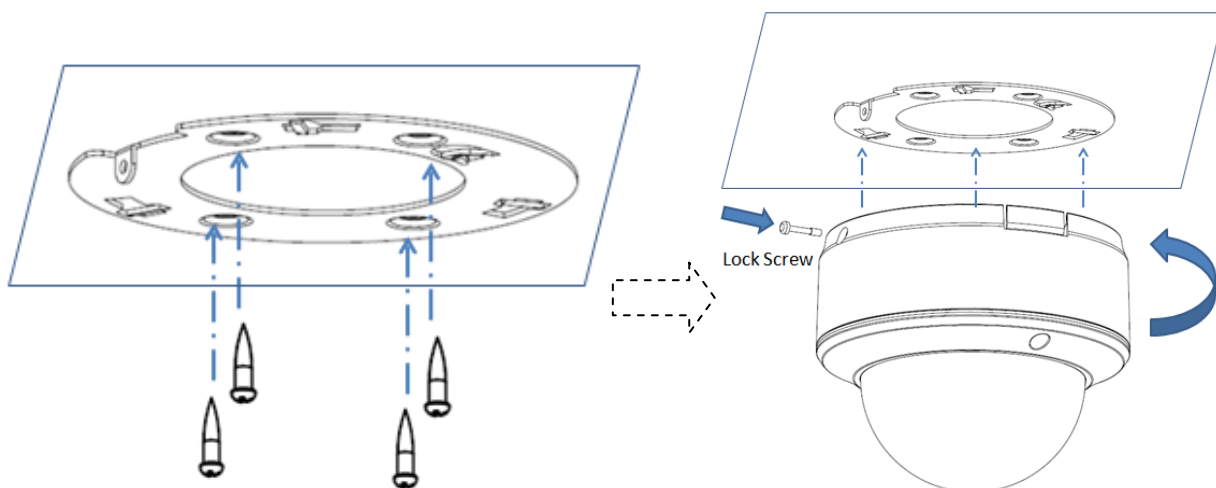
NOTE:

When the camera is power up, press the "INITIAL SET" button for about 10 seconds, then all parameters, including user name, password, IP address, port number, etc., will be reset to the factory default settings.

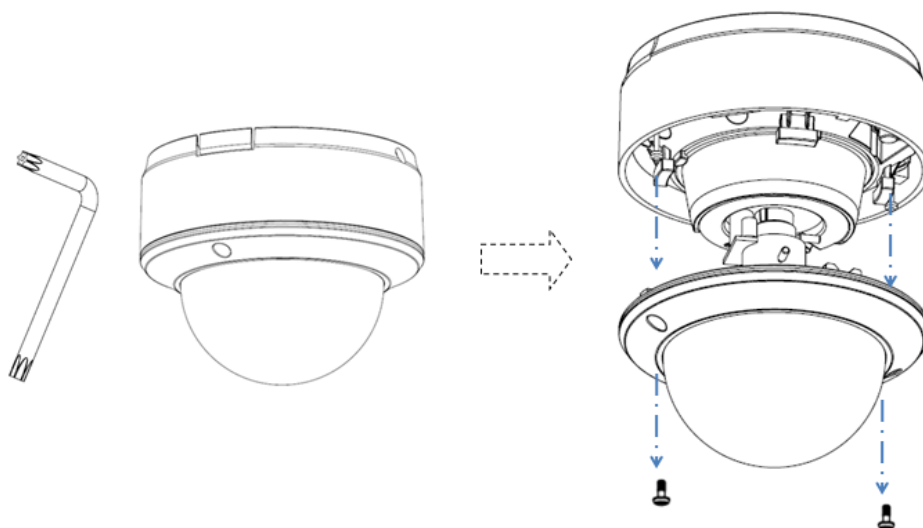
2.Installation

The steps of installing the camera on the ceiling as following:

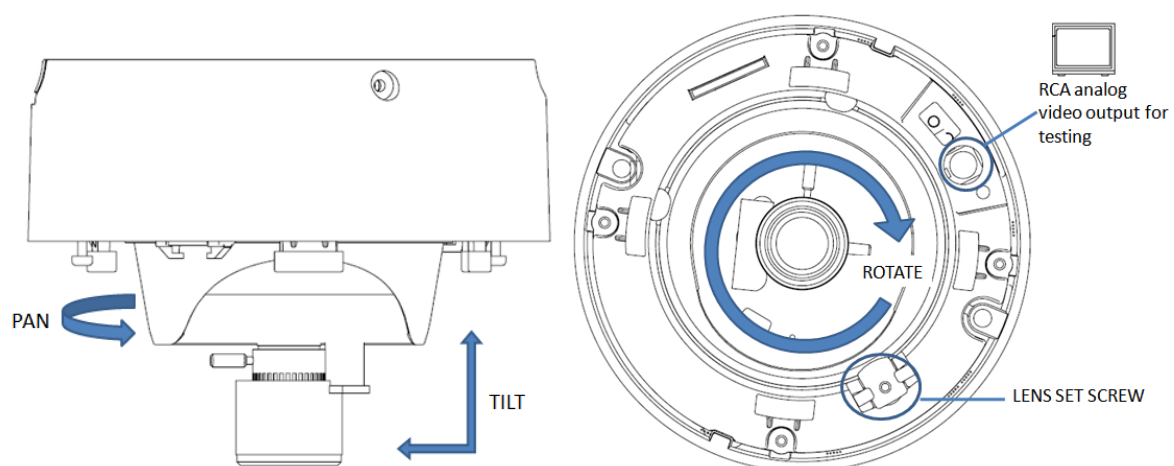
1. Use the screws to fix the bottom plate on the ceiling, and rotate dome camera in anti-clockwise direction to attach it to the bottom plate, and finally use the lock screw to secure the dome camera into position.



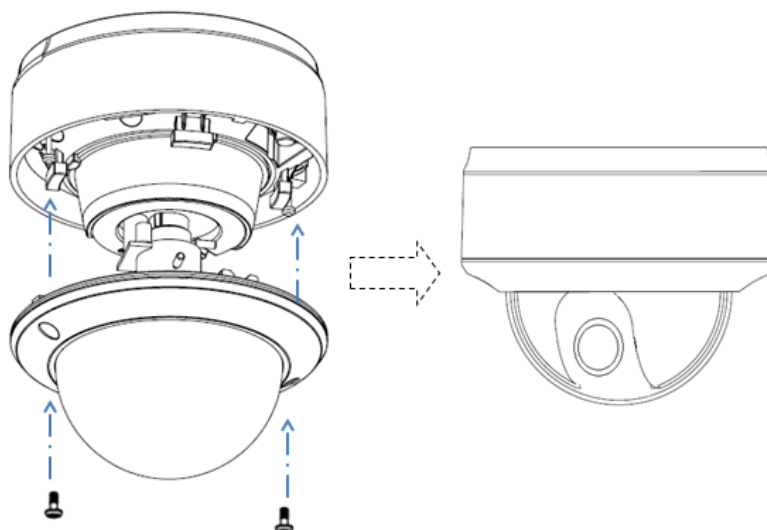
2. Loosen the set screws with a hexagonal screw driver (attached with the camera), and take down the dome cover .



3. While viewing the video on the monitor, adjust the camera's view angle for your need.

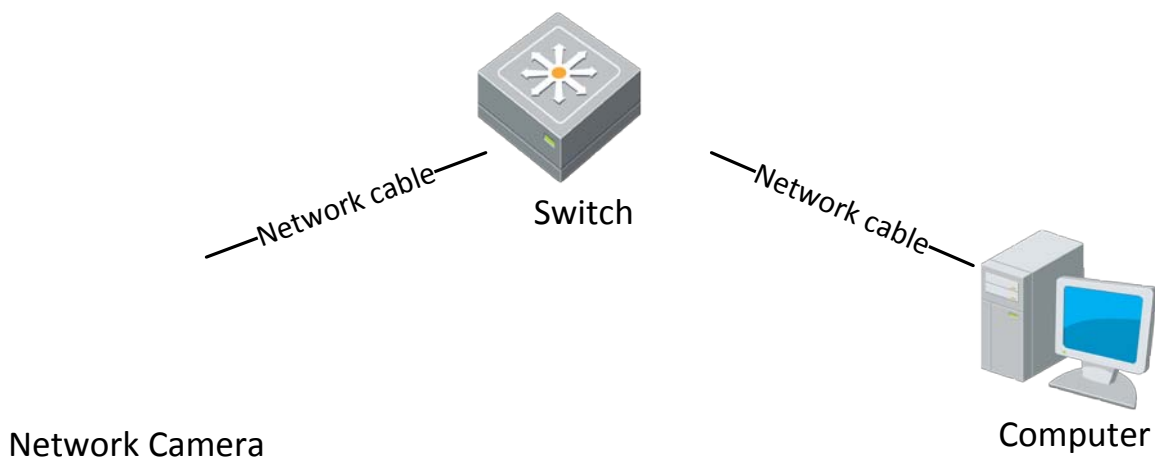


4. Install the dome cover and tighten the screws.



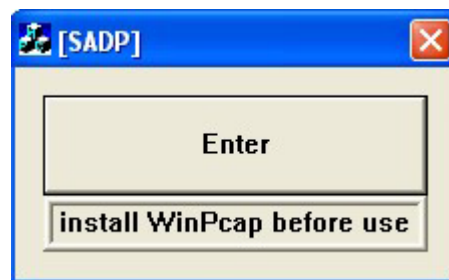
3.Search and Modify IP

SADP (Search Active Devices Protocol) software can automatically search the IP address of network cameras' on the same network with connection diagram as follows:

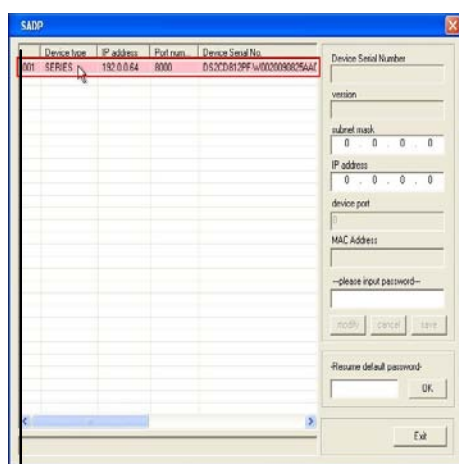


The operation of searching and modifying IP address is described as following:

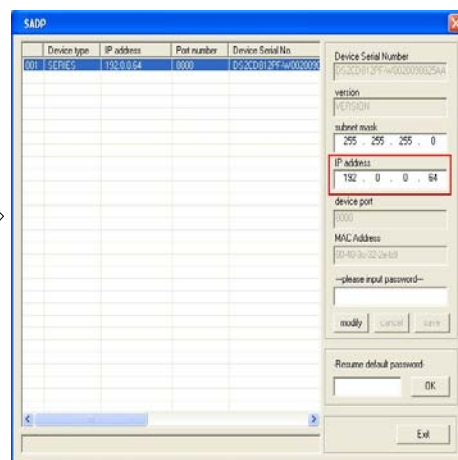
1. install the SADP software, and then run the "sadpdlg.exe".



2. Search IP address.



Click it



Show the IP address of the camera

3. Modify IP address.

The SADP window displays a table with the following data:

Device type	IP address	Port number	Device Serial No.	
001	SERIES	192.0.0.64	8000	DS2CD812PF-W0020090825AA

Configuration details on the right:

- Device Serial Number: DS2CD812PF-W0020090825AA
- version: VERSION
- subnet mask: 255 . 255 . 255 . 0
- IP address: 192 . 0 . 0 . 64
- device port: 8000
- MAC Address: 00-40-3c-32-2e-b9
- please input password---
- Buttons: modify, cancel, save
- Resume default password-: [] OK
- Exit

1. Click [modify]

The SADP window shows the configuration details with the following changes:

- IP address: 172 . 6 . 8 . 64
- please input password---: [password]
- Buttons: modify, cancel, save

2. Input new IP address and the password (Default: 12345) of the camera, then click [save]

The SADP window shows the updated configuration and a success message:

- IP address: 172 . 6 . 8 . 64
- Buttons: modify, cancel, save
- update device,modify device successfully!

3. Modify successfully

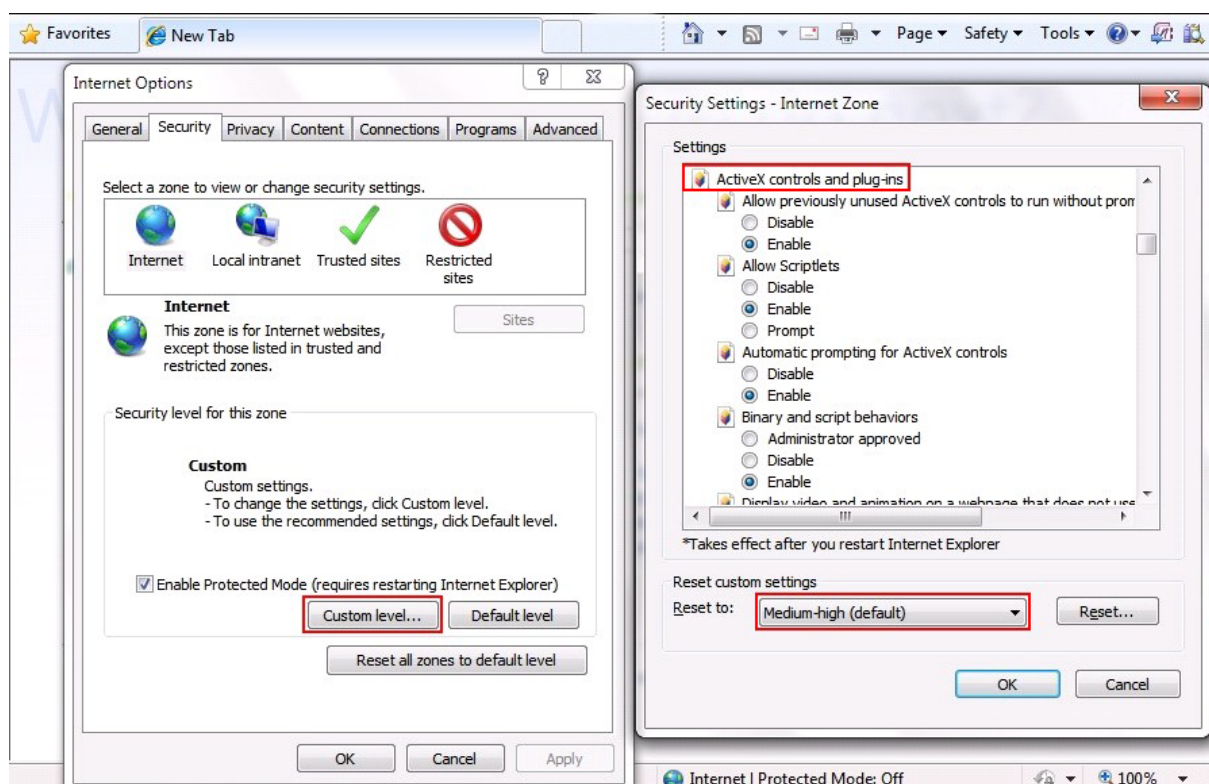
4. Preview via IE browser

Note:

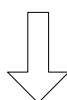
The default IP of network cameras' is '192.0.0.64' with 'admin' as the administrator, '12345' as the password, and '8000' as the default port.

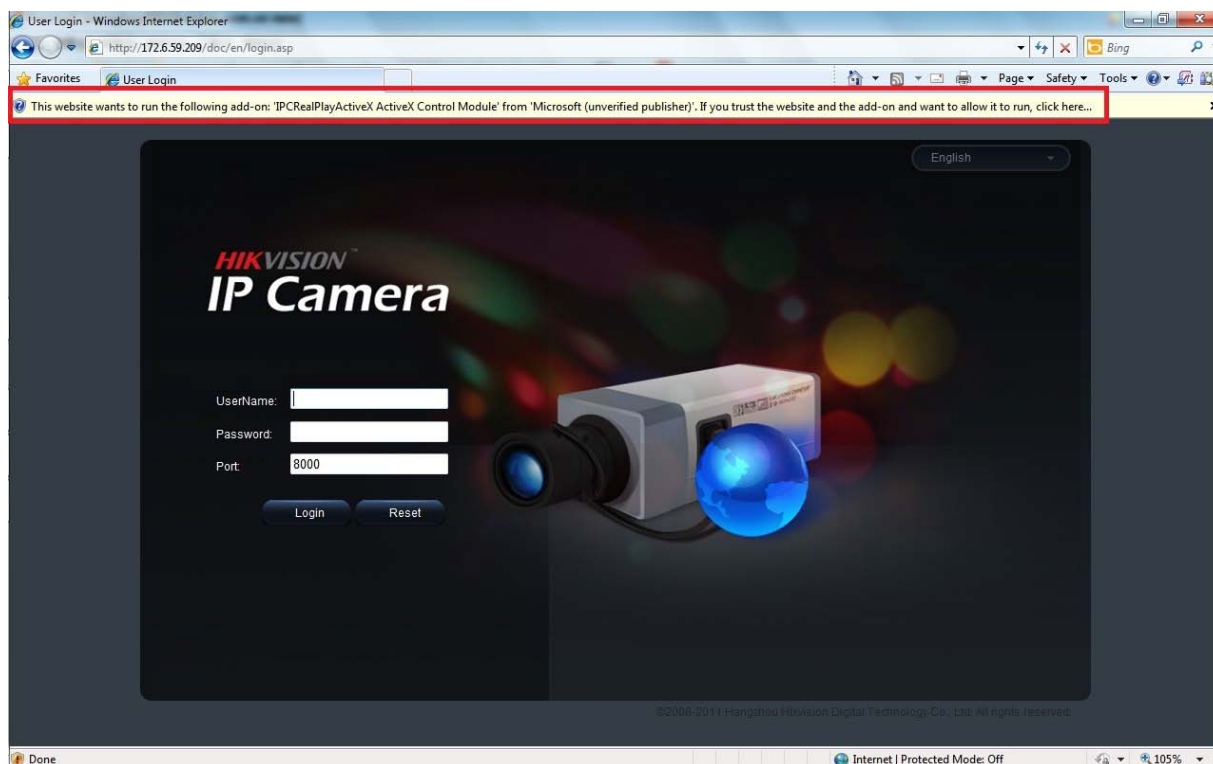
For monitoring camera images, a computer running the Microsoft Windows Operating System and Internet Explorer (Version 6.0 or later) are required. In this manual, we take Windows XP and IE 6.0 for example.

This chapter describes how to view the video from the camera via web browser, and operate as following:

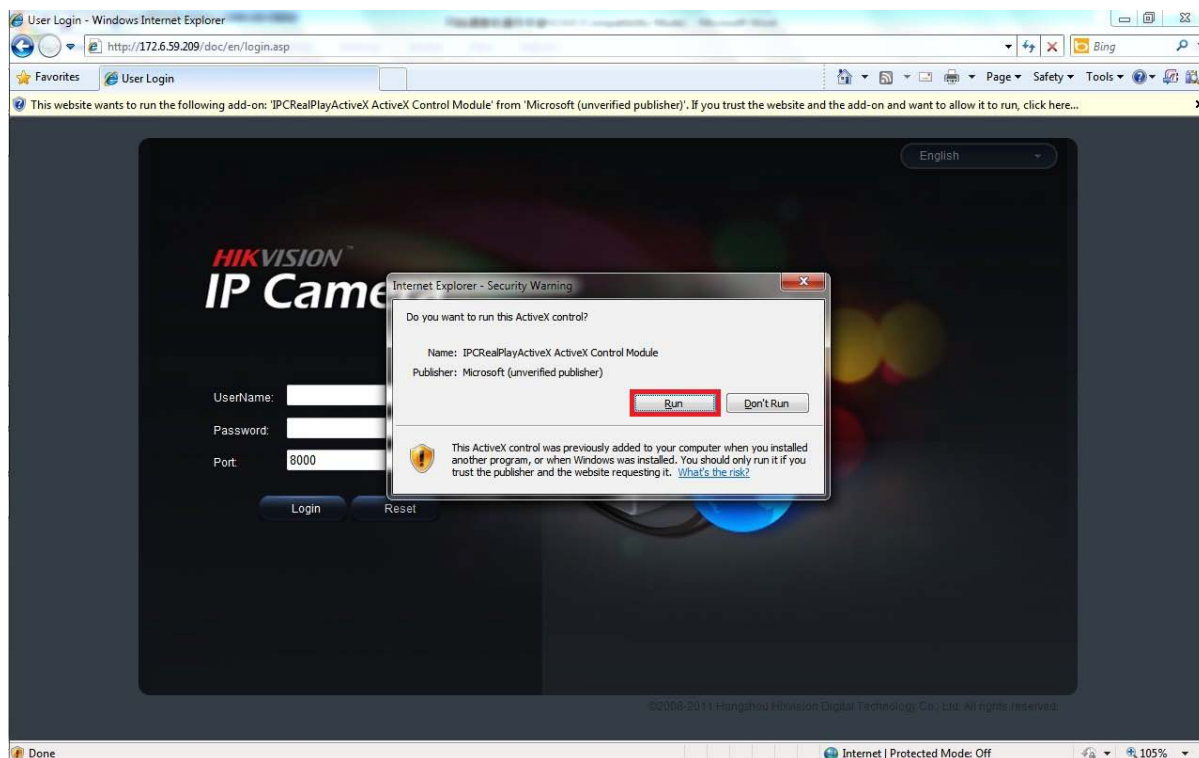


1. Open the IE browser, set the security level to [Medium] in [Tools/InternetOptions/Security/Custom Level...], and then enable or prompt Activex Control and Plug-in directly as well.

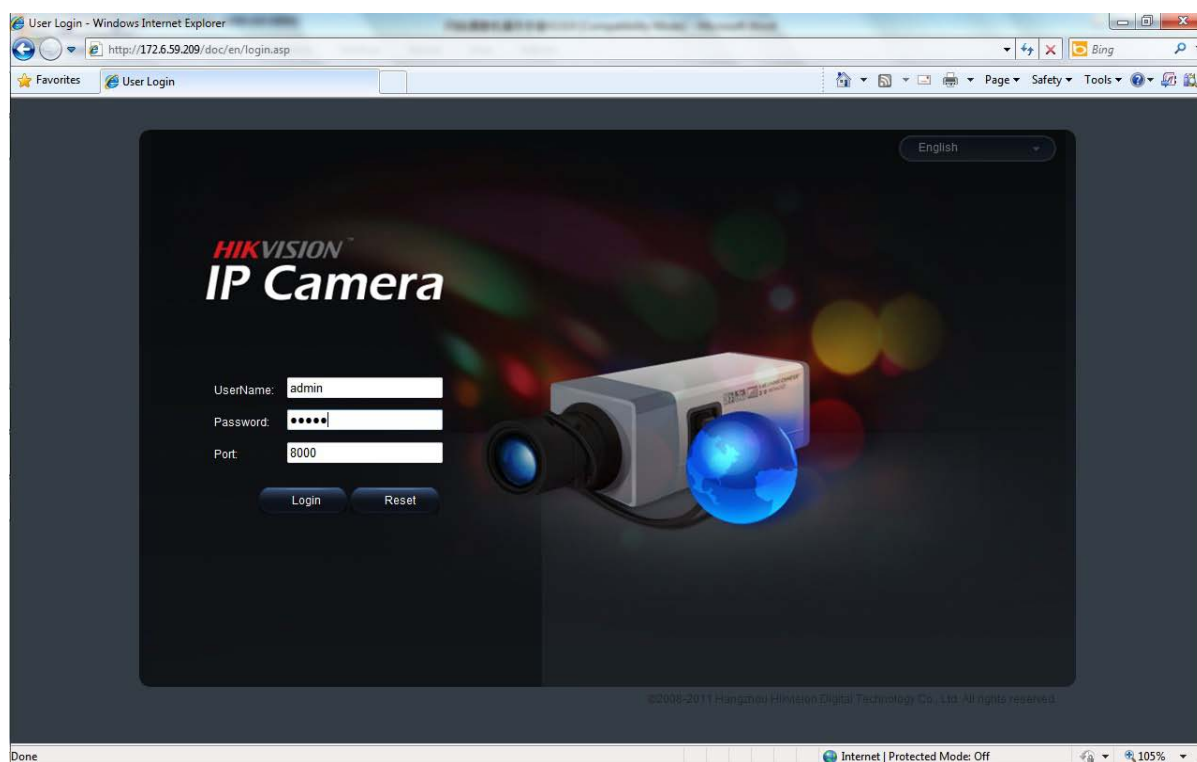




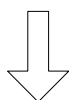
2. Type the IP address of the camera and press [Enter], and then click the mention box that pop up.



3. Click [Run] to install the ActiveX control.



4. Input "Username" (Default: admin), "Password" (Default: 12345) and "Port" (Default: 8000) of the camera, and then click [Login]





5. View the image

For detailed instructions of further configuration, please refer to the user manual of network camera.

First Choice for Security Professionals