

HIKVISION



HUGE PANORAMAS.
INCREDIBLE VIEW.
**HIKVISION PANO VU SERIES
NETWORK CAMERA**

PanoVu



WHAT IS THE PANOVO CAMERA?

When designing surveillance applications, more and greater requirements have become necessary for monitoring large areas such as public plazas, arenas, airports, busy traffic intersections, and the like. In very large settings, security personnel need to see more with just one camera – not just a panoramic image, but zoomed-in, detailed views as well.

With that in mind, Hikvision designed the PanoVu Series all-in-one cameras to capture both excellent panorama and close-up details. Panoramic images are captured with four or eight 2-Megapixel sensors, rendering 180° or 360° panoramic imaging with real-time ultra-HD resolution. The integrated design and high-speed pan-tilt-zoom action grants the user swift positioning over expansive areas with the power to bring sharp details into focus. At the same time, the PanoVu Series Cameras utilize Hikvision's ultra-low light Darkfighter technology, making colored images possible in poorly lit environments.

Now, new additions to the PanoVu product family feature high definition panoramic view camera – up to 24 MP – as well as supplemental IR & panoramic lighting for clear images in extremely dark environment, and an amazing wide tilt angle. And, because panoramic cameras demand more bandwidth and storage than conventional cameras, Hikvision designed the PanoVu cameras to

utilize H.265+ technology, making the most efficient use of video transmission and storage.

In addition, this amazing Hikvision PanoVu Camera (DS-2DP1636-D) won the iF Design Award for its simple design, compact structure, and easy installation.



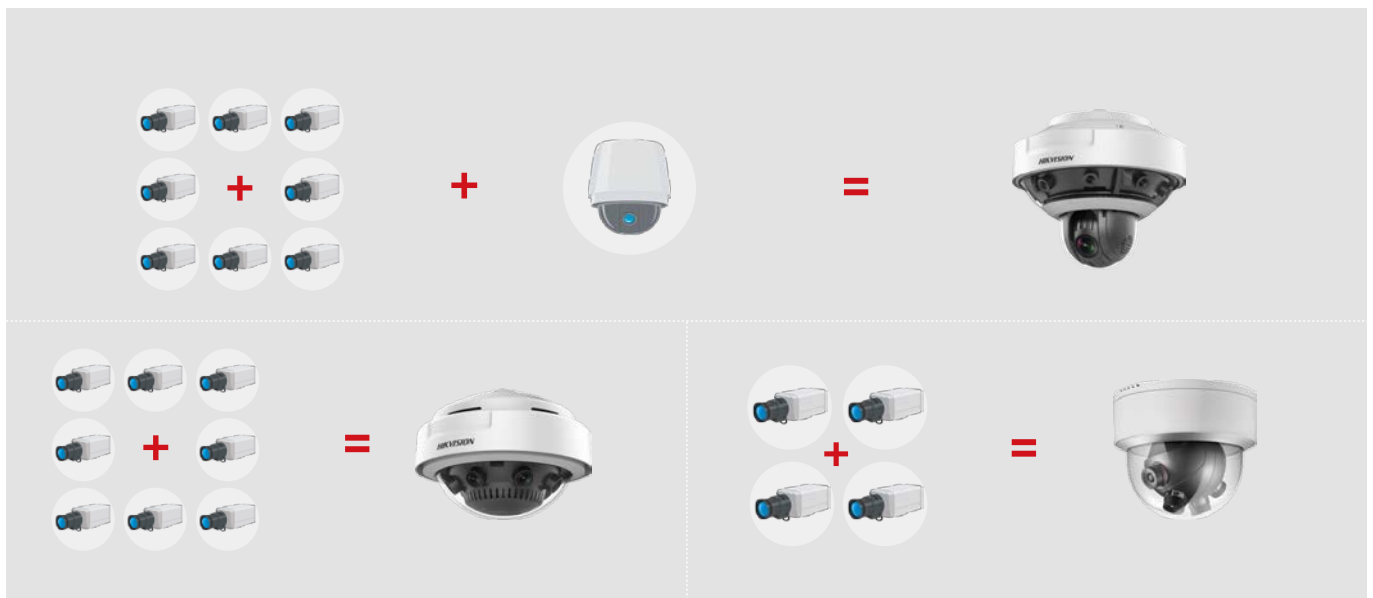
63rd iF International Design Awards
– Germany, 2016



A SIMPLE SYSTEM FOR AN EASY INSTALLATION

With an "All-in-one" design, a single product serves as a system that enables front-end splicing and delivers both panorama and every detail through full shot (180° or 360°) and close-up shot without using any additional server. You can enjoy a simple and time-saving installation and maintenance. The product allows for a quick installation as dome camera does---all you need are a

cable and a power supply. Characterized by a flexibility and ease of operation, it provides a full range of options in the user interface to offer a panorama in the ultra-high-resolution scene while capturing the details dynamically in real-time. You can zoom in an image to its center to see the close-up details just by clicking on the image.



PANORAMIC VIEWS AND FINER PICTURES

Combining several built-in horizontal cameras with PTZ power, one PanoVu camera captures 360° or 180° panoramic images as well as close-up images with 36x optical zoom. These 24 MP cameras provide high-resolution images with more details. Note, too, that

the panoramic images are stitched together within the camera itself, so users will not need another server or add-on to enjoy full use of the cameras.



360° Overview + 36x PTZ

DarkFighter ULTRA-LOW LIGHT TECHNOLOGY AND SUPPLEMENTAL LIGHTING

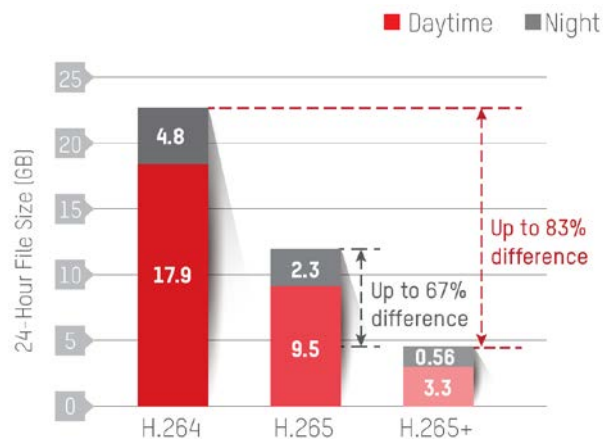
All fixed and zoom lenses of PanoVu cameras utilize Hikvision DarkFighter ultra-low light technology. Therefore, whether you are viewing 180° or 360° panoramic images or PTZ close-up images, each one can render colored images in very low-light environments.

Supplemental lighting significantly improves image quality in extremely dark environment. But with a panoramic camera, it's difficult for supplement light to reach the same angle as the lens. Hikvision's advanced PanoVu cameras, however, feature wide-angle supplemental light, perfectly matching the angle of the lens and bringing vivid images to life.



SMART CODEC – H.265+ OPTIMIZED COMPRESSION

PanoVu Series Cameras also feature Hikvision's H.265+ technology, reducing bandwidth and storage requirements by an average of 70% or more while maintaining consistent resolution, framerates, and details. It's an efficient way to manage super high resolution video footages.

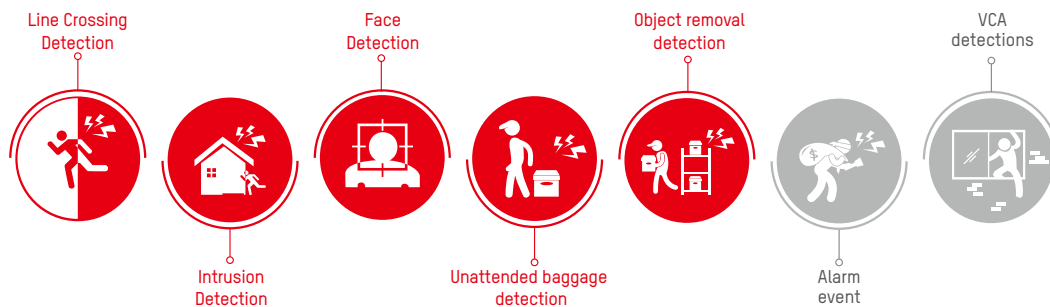


24-Hour recording file size (GB) comparing H.264, H.265, and H.265+

*Data was tested in a common scene; for reference only.

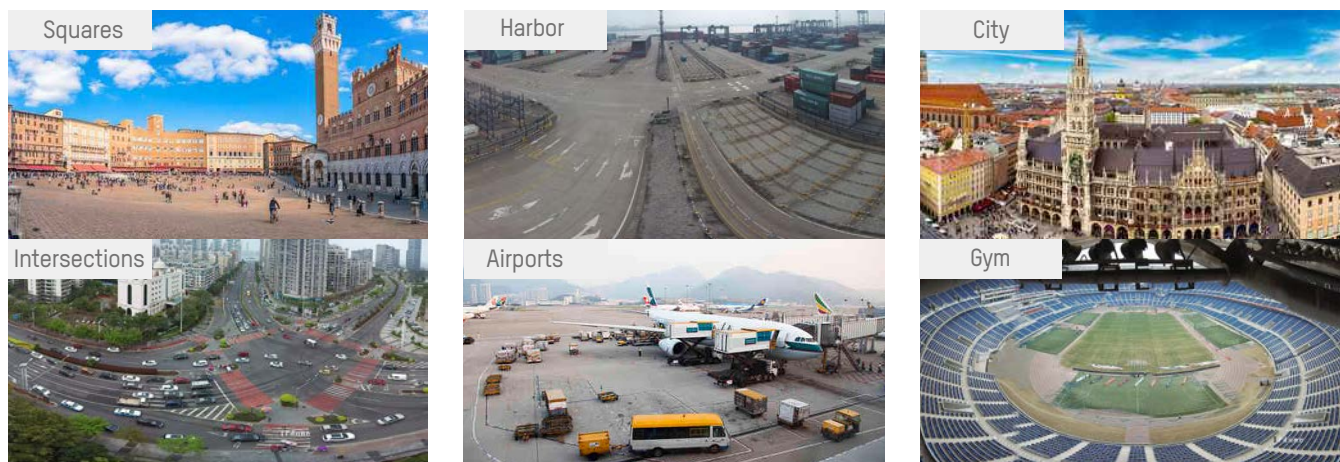
SMART FUNCTIONS

With advanced video analysis and multi-target tracking algorithms, PanoVu Cameras also feature a wide range of Smart functions in panoramic mode, including intrusion detection, line crossing detection, and region entrance and exiting detection. The PanoVus can also send alarm signals linked to the PTZ for tracking, greatly improving security efficiency.



APPLICATION SCENARIOS

With intelligent and powerful features, the PanoVu Series Cameras can be used extensively, including applications like airports, transit stations, gymnasiums, scenic ports, and public squares needing a wide range of monitoring.



PRODUCT FEATURES



DS-2CD6A64F-HIS/NFC
24 MP PanoVu Camera



Panoramic Camera

- 1/1.8" Progressive Scan CMOS
- 8208 x 3072 resolution @ 30 fps
- Horizontal angle of view: 180°; Vertical angle of view: 80°
- H.265, H.264
- Fiber optic transmission
- Up to 50 m IR range
- IP 66 standard
- Image stitching and single video stream output
- 6 behavior analyses, 1 exception detection, and face detection



DS-2CD6986F-(H)
180° Panoramic Dome Camera



Panoramic Camera

- 1/2.8" Progressive scan CMOS
- 4096 x 1800 @ 30 fps in panorama mode
- 4 x 4 mm lens
- 4 x IR LEDs, up to 20 m IR distance
- H.265, H.265+
- IP67
- 3D DNR
- BLC / ROI / HLC
- Audio and alarm I/O (-S)
- 6 behavior analyses, audio anomaly detection, and face detection



DS-2DP1636-D
360° Panoramic Camera



Panoramic Camera

- Four 1/1.8" progressive scan CMOS
 - Up to 4096 x 1800 resolution @ 30 fps
 - Horizontal field of view: 180°, vertical field of view: 80°
 - Min. illumination:
- Color: 0.005 Lux @ (F2.0, AGC ON),
B/W: 0.0005 Lux @ (F2.0, AGC ON)

Tracking PTZ Camera

- 1/1.8" progressive scan CMOS
 - Up to 1920 x 1080 resolution @ 30 fps
 - Pan and tilt range: 360° (Pan), -15° to 90° (Tilt)
 - Min. illumination:
- Color: 0.002 Lux @ (F1.5, AGC ON),
B/W: 0.0002 Lux @ (F1.5, AGC ON), 0 Lux with IR
- 36x Optical Zoom, 16x Digital Zoom
 - IR distance: 200 m



DS-2DP1636ZIX-D/236 (5 mm)
360° Panoramic + PTZ Camera



Panoramic Camera

- Eight 1/1.8" progressive scan CMOS
 - Up to two 4096 x 1800 resolution @ 30 fps
 - Horizontal field of view: 360°, vertical field of view: 80°
 - Min. illumination:
- Color: 0.005 Lux @ (F2.0, AGC ON),
B/W: 0.0005 Lux @ (F2.0, AGC ON)

Tracking PTZ Camera

- 1/1.8" progressive scan CMOS
 - Up to 1920 x 1080 resolution @ 30 fps
 - Pan and tilt range: 360° (Pan), -15° to 90° (Tilt)
 - Min. illumination:
- Color: 0.002 Lux @ (F1.5, AGC ON),
B/W: 0.0002 Lux @ (F1.5, AGC ON), 0 Lux with IR
- 36x Optical Zoom, 16x Digital Zoom
 - IR distance: 200 m



DS-2DP1636Z-D
360° Panoramic +2MP 36x PTZ Camera



Panoramic Camera

- 8 x 1/1.9" Progressive Scan CMOS, up to 2 x 4096 x 1800 resolution @ 30 fps
- Horizontal angle of view: 360°; Vertical angle of view: 78°
- Color: 0.005 Lux @ (F1.8, AGC ON); B/W: 0.0005 Lux @ (F1.8, AGC ON)

PTZ Camera

- Supports manual-tracking & auto-tracking
- 1/1.9" Progressive Scan CMOS, up to 1920 x 1080 resolution @ 30 fps
- Color: 0.002 Lux @ (F1.5, AGC ON); B/W: 0.0002 Lux @ (F1.5, AGC ON)
- 36x Optical zoom, 16x Digital zoom
- 360° endless pan range and -15 to 90° tilt range
- 540°/s Pan Preset Speed and 400°/s Tilt Preset Speed
- 0.1° to 300°/s Manual Pan Speed and 0.1° to 240°/s Manual Tilt Speed
- 300 Presets programmable; preset image-freeze capability
- 8 Patrols, up to 32 presets per patrol
- Power-off Memory: Restores PTZ & lens status after reboot



DS-2DP0818Z-D
180° Panoramic +2MP 36x PTZ Camera



Panoramic Camera

- 4 x 1/1.9" Progressive Scan CMOS, up to 4096 x 1800 resolution @ 30 fps
- Horizontal angle of view: 180°; Vertical angle of view: 78°
- Color: 0.005 Lux @ (F2.2, AGC ON); B/W: 0.0005 Lux @ (F2.2, AGC ON)

PTZ Camera

- Supports manual-tracking & auto-tracking
- 1/1.9" Progressive Scan CMOS, up to 1920 x 1080 resolution @ 30 fps
- Color: 0.002 Lux @ (F1.5, AGC ON); B/W: 0.0002 Lux @ (F1.5, AGC ON)
- 36x Optical zoom, 16x Digital zoom
- 360° Endless pan range and -15° to 90° tilt range
- 540°/s Pan Preset Speed and 400°/s Tilt Preset Speed
- 0.1° to 300°/s Manual Pan Speed and 0.1° to 240°/s Manual Tilt Speed
- 300 Presets programmable; preset image freezing capability
- 8 Patrols, up to 32 presets per patrol
- Power-off Memory: Restores PTZ & Lens status after reboot

PanoVu Camera



DS-2DP1636-D
360° Panoramic
Camera



Panoramic Camera

- 8 x 1/1.9" Progressive Scan CMOS, up to 2 × 2400 × 3840 @ 25 fps
- Horizontal angle of view: 360°; Vertical angle of view: 180°
- Color: 0.004 Lux @(F1.8, AGC ON); B/W: 0.0004 Lux @(F1.8, AGC ON)



DS-2CD6986F-(H)
180° Panoramic Dome
Camera



Panoramic Camera

- Panoramic camera
- 4 x 1/1.8" Progressive Scan CMOS
- 180° Horizontal View
- Up to 4096 × 1800P resolution
- Min. Illumination: 0.002 Lux @ (F1.8, AGC ON)(Color), 0.0002 Lux @ (F1.8, AGC ON)(B/W) • 3D DNR
- 3D DNR
- Support 128G on-board storage
- DC12V/PoE
- Audio/Alarm IO

■ Recommend Combinations



DS-9632/649632/64/128/256NI-I8/I16/I24
Embedded H.265 4K 2U NVR

- 320/515/768 Mbps max. bit rate input (up to 32/64/128/256-ch IP video)
- Third-party network cameras supported
- Up to 12MP resolution recording
- Support H.265/H.264/MPEG4 video formats
- 2-ch HDMI and 2-ch VGA outputs interfaces provided, HDMI1 output at up to 4K (3840 × 2160) resolution
- Dual Gigabit network interfaces
- 8/16 SATA, 1 eSATA, 2 USB2.0, 1 USB3.0
- Support RAID0, 1, 5, 6, 10



iVMS 5200 Pro
iVMS-5200 Professional Software

- Centralized equipment and user management
- Support ANPR and ANPR based parking management(New)
- Support business intelligence & POS integration;
- Maximum connected devices per system: 1024
- Control client: max 16, web client: max 16, mobile client: max 64;
- 3rd party surveillance integration via ONVIF protocol and SDK
- Mobile transportation management module (New)



HUGE PANORAMAS. INCREDIBLE VIEW. HIKVISION PANOVU SERIES NETWORK CAMERA

Distributed by



HIKVISION®

Headquarters

No.555 Qianmo Road, Binjiang District,
Hangzhou 310051, China
T +86-571-8807-5998
overseasbusiness@hikvision.com

Hikvision USA
T +1-909-895-0400
sales.usa@hikvision.com

Hikvision Australia
T +61-2-8599-4233
salesau@hikvision.com

Hikvision India
T +91-22-28469900
sales@pramahikvision.com

Hikvision Canada
T +1-866-200-6690
sales.canada@hikvision.com

Hikvision Thailand
T +662-275-9949
sales.thailand@hikvision.com

Hikvision Europe
T +31-23-5542770
sales.eu@hikvision.com

Hikvision Italy
T +39-0438-6902
info.it@hikvision.com

Hikvision Brazil
T +55 11 3318-0050
Latam.support@hikvision.com

Hikvision Turkey
T +90 (216) 521 7070- 7074
sales.tr@hikvision.com

Hikvision Malaysia
T +601-7652-2413
sales.my@hikvision.com

Hikvision UK & Ireland
T +01628-902140
sales.uk@hikvision.com

Hikvision South Africa
Tel: +27 (0) 351172
sale.africa@hikvision.com

Hikvision France
T +33(0)1-85-330-450
info.fr@hikvision.com

Hikvision Kazakhstan
T +7-727-9730667
nikia.panfilov@hikvision.ru

Hikvision Vietnam
T +84-974270888
sales.vt@hikvision.com

Hikvision UAE
T +971-4-4432090
salesme@hikvision.com

Hikvision Singapore
T +65-6684-4718
sg@hikvision.com

Hikvision Spain
T +34-91-737-16-55
info.es@hikvision.com

Hikvision Tashkent
T +99-87-1238-9438
uzb@hikvision.ru

Hikvision Hong Kong
T +852-2151-1761
info.hk@hikvision.com

Hikvision Russia
T +7-495-669-67-99
saleru@hikvision.com

Hikvision Korea
T +82-(0)31-731-8817
sales.korea@hikvision.com

Hikvision Poland
T +48-22-460-01-50
info.pl@hikvision.com

Hikvision Indonesia
T +62-21-2933759
Sales.Indonesia@hikvision.com

Hikvision Colombia
sales.colombia@hikvision.com

Follow us on social media to get the latest product and solution information



Hikvision



HikvisionHQ



HikvisionHQ



Hikvision_Global



Hikvision
Corporate Channel



hikvisionhq

www.hikvision.com

