



DS-D5019/21/32/43

Hikvision's incredibly durable Professional Monitors are specially designed for security and control center environments. Featuring industry-grade panels, professional displays, and sharp, brilliant image clarity, these are ideal monitors for every critical monitoring need – 24 hours a day, 7 days a week.



■ On Duty 24/7 for Mission Critical Applications



Original Modular Panel



Professional Display Board



Professional Power Board



24/7 Operation

■ Longer Life Span for Critical Performance and Minimum TCO



Panel life of Hikvision monitors

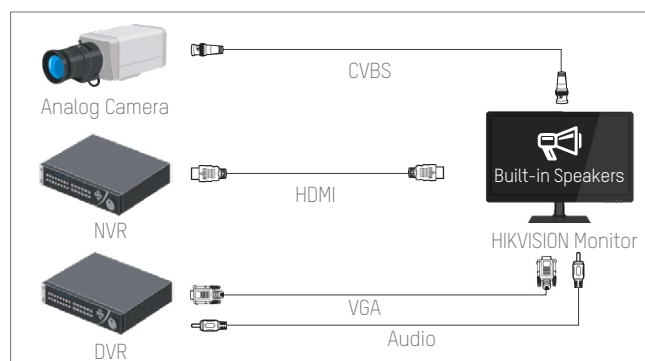
50,000 – 60,000 Hours



Panel life of normal monitors

20,000 – 25,000 Hours

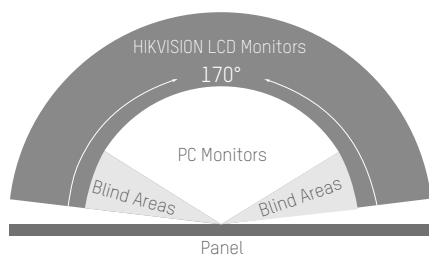
■ Perfect Compatibility with Analog Cameras and DVRs & NVRs



■ Wide Viewing Angle for Flexible Monitor Positioning

Viewing Angles

- Horizontal: 170° – 178°, Vertical: 160° – 178°
- Multiple monitoring angles



Viewing Angle Comparison

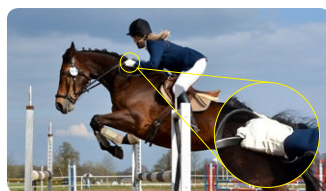


Flexible Monitoring Angles

■ Excellent Image Processing



1:1 Color rendition reproduces camera's original image



3D De-interlacing and frame rate conversion



Skin color correction



High-quality 3D digital processing

Models	DS-D5019QD	DS-D5021QD	DS-D5032FC	DS-D5043FC
Bezel Material	Plastic			
Working Time	24 hrs/day, 7 days/week			
Display				
Display Type	LED-Backlit TFT LCD			
Screen Size	18.5"	20.7"	32"	42.51"
Max. Resolution	1366 × 768	1920 × 1080		
Brightness	250cd/m2	200cd/m2	350cd/m2	260cd/m
Contrast	1,000:1	600:1	1,200:1	
Response Time	5 ms	3.5 ms	6.5 ms	8 ms
Viewing Angles	Horizontal 170°, Vertical 160°		Horizontal 178°, Vertical 178°	
Inputs				
HDMI	1 × HDMI			
VGA	1 × VGA			
DVI	-			1 × DVI
CVBS	-		1 × BNC	
Inputs				
Audio Inputs	1 × 3.5mm mini-jack			
Speakers	2 × 2W			10W × 2



Better Vision with Hikvision

Hikvision Economical Monitors

DS-D5019QE(-B)

Hikvision's Economical Monitors feature LED backlighting on a 19" (18.5" viewable) widescreen display with high-definition, 1366 x 768 resolution, delivering brilliant and sharp image clarity. Advanced features, including 100,000,000:1 contrast ratio and LED backlight technology, make this the ideal display for daily working and surveillance monitoring needs.



■ Brilliant Image Clarity and Quick Response

- Excellent image clarity with ultra-high 100,000,000:1 dynamic contrast ratio
- Effective noise reduction via 3D comb filter and 3DNR
- Millisecond-level response, effectively preventing mosaic and stuck images or seizing every other moment

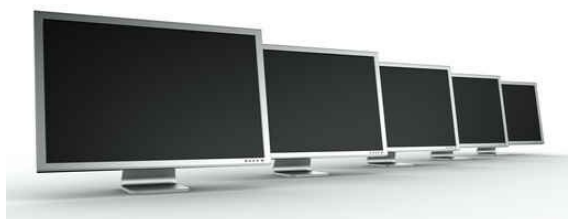


HD Image Display



Millisecond-level Response

■ Professional, User-Friendly Design



Standard VESA compliance



Textured frame

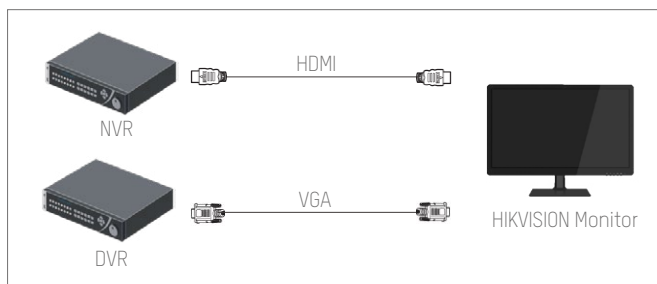


Base with -5 to +10-degree angle adjustment for flexible monitoring



Low-frequency flicker and textured frame decrease visual fatigue after long time watching.

■ Perfect Integration and Compatibility with DVRs & NVRs



Models	DS-D5019QE	DS-D5019QE-B
Display Type	LED-Backlit TFT LCD	
Screen Size	18.5"	
Max. Resolution	1366 × 768	
Brightness	200cd/m2	
Viewing Angles	Horizontal: 90°, Vertical: 65°(Typical)	
Input	1 × VGA	1 × VGA 1 × HDMI