



TURBO HD 3.0 ANALOG SOLUTION

TURBO HD 3.0

Distributed by



HIKVISION

Headquarters

No.555 Qianmo Road, Binjiang District,
Hangzhou 310051, China
T +86-571-8807-5998
overseasbusiness@hikvision.com

Hikvision USA
T +1-909-895-0400
sales.usa@hikvision.com

Hikvision Italy
T +39-0438-6902
info.it@hikvision.com

Hikvision Singapore
T +65-6684-4718
sg@hikvision.com

Hikvision Europe
T +31-23-5542770
saleseuro@hikvision.com

Hikvision France
T +33(0)1-85-330-444
info.fr@hikvision.com

Hikvision Oceania
T +61-2-8599-4233
salesau@hikvision.com

Hikvision Middle East
T +971-4-8816086
salesme@hikvision.com

Hikvision Spain
T +34-91-737-16-55
info.es@hikvision.com

Hikvision Hong Kong
T +852-2151-1761

Hikvision Russia
T +7-495-669-67-99
saleru@hikvision.com

Hikvision Poland
T +48-22-460-01-50
poland@hikvision.com

Hikvision Canada
T +1-909-895-0400
sales.usa@hikvision.com

Hikvision India
T +91-22-28469900
sales@pramahikvision.com

Hikvision UK
T +44-1628-9021-4
support.uk@hikvision.com

TURBO HD 3.0
ANALOG SOLUTION

HIKVISION

TURBO HD 3.0



DON'T REPLACE YOUR
SECURITY SYSTEM
TURBOCHARGE IT!

www.hikvision.com

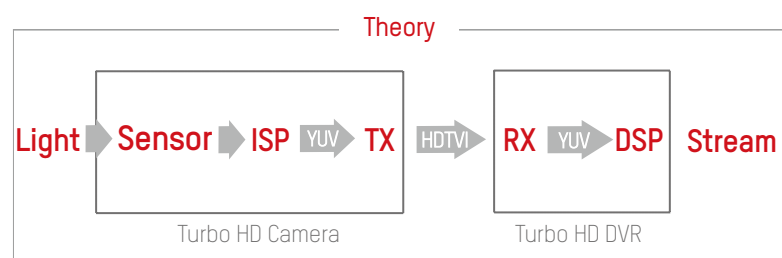


The Trends and Market Requirements for HD Products

With the recent and rather substantial surge in the need for up-to-date surveillance systems, installers often find themselves scrambling to patch together old technology with new products. Naturally, compatibility challenges pop up everywhere. When you need to update or upgrade an existing video surveillance system, finding the right gear is one of the biggest difficulties. Not only that, but removing old components and cables to install new equipment often makes a project more complex than simply starting from scratch. You need surveillance products that are widely compatible, simple to install, and cost effective. Hikvision provides just that – in our Turbo HD 3.0 Analog Solution.

Specially designed for analog users who want a high-definition surveillance system, Hikvision's Turbo HD 3.0 Solution makes High Definition video possible without upgrading to IP cameras or even replacing existing cabling structure. Turbo HD 3.0 technology takes current equipment and powers it up to the next level.

HDTVI TECHNOLOGY

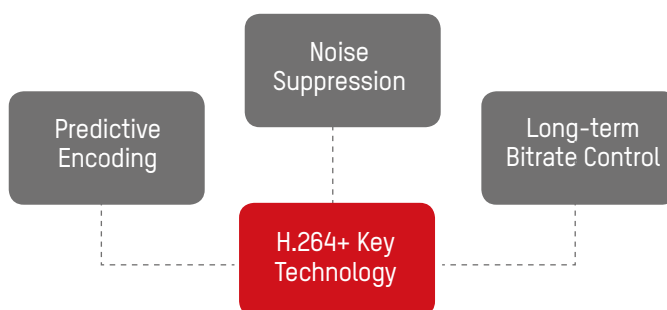
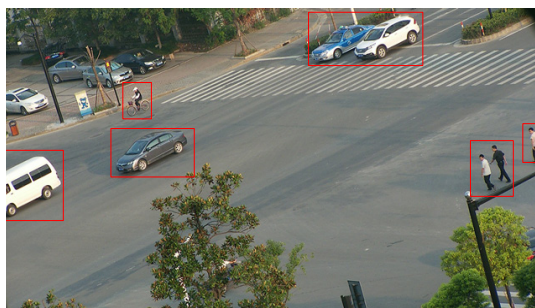


HIGHLIGHTS

- HDTVI (HD Transport Video Interface) standard
- Transmission media: SYV75-3/SYV75-5/UTP
- Farther transmission distance(1200/800m)
- Low-frequency signal, great anti-interference & image performance

■ H.264+: SAVE 50% Bitrate as Average

Maximizing the memory of security systems is critical. But Hikvision is solving that problem, with H.264+. The "+" on our "H.264+" means a step up in efficiency from the standard H.264 – bitrates are reduced by 50% on average while high transmission quality is maintained. That means more data becomes available, and it means more memory remains available in existing recording devices and computer systems.



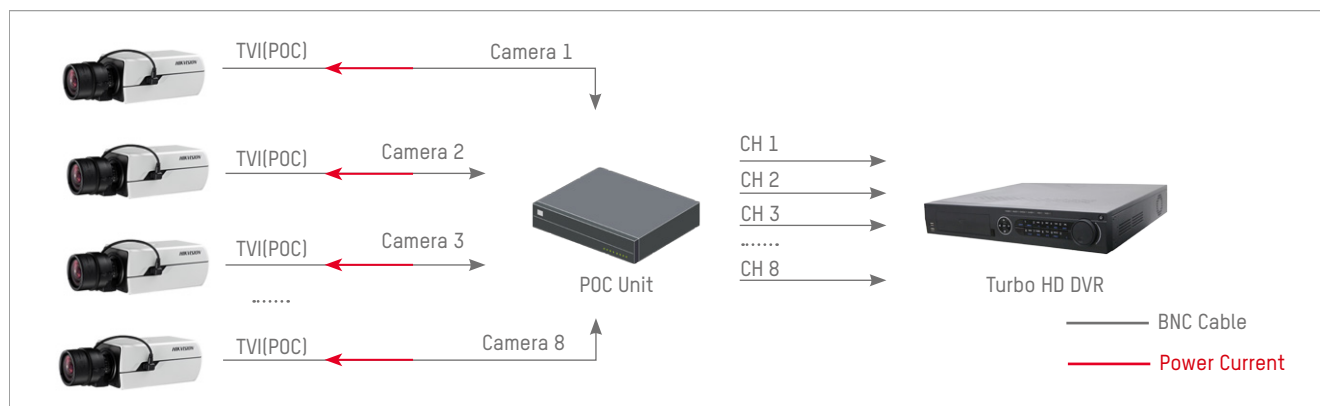
■ Longer Transmission Distance

As any successful business grows, so does its need for extended security. Once a complete system has been installed, it's not very long before it needs to expand. Using our technology, your customers can manage much larger projects, or extend existing ones, with high definition video while simultaneously increasing the transmission range. Users immediately find an increase in transmission distances – even up to 2625 feet (800m) – using existing coaxial cable. The full value of the user's investment comes through in HD 1080p resolution. That means upgrades in both quality and size at the same time.



■ Easier Installation with POC

Once the equipment has been selected, the next hurdle is the hardware installation process. This is usually the toughest part, but now it's gotten significantly easier. You can leave that existing coax cable right where it is. Hikvision's Power-over-coax (POC) feature radically simplifies installation, as one coaxial cable carries both the video signal and the power supply. This translates to reduced installation time, which also translates to a reduction in both installation and material costs – which also means happy customers!



■ Up to 5MP

The Turbo HD Analog solution offers up to 5MP HD video input, 4K UHD HDMI video output, and real-time HD video recording at 1080P/720P with a maximum frame rate of 30 fps. The HD video output is not just based on the work of sensor, but the combination of the HD lens and Hikvision image signal processing (ISP). HD lenses with low distortion and large apertures enable better low-light performance, while Hikvision ISP provides videos with greater detail and vibrant color.



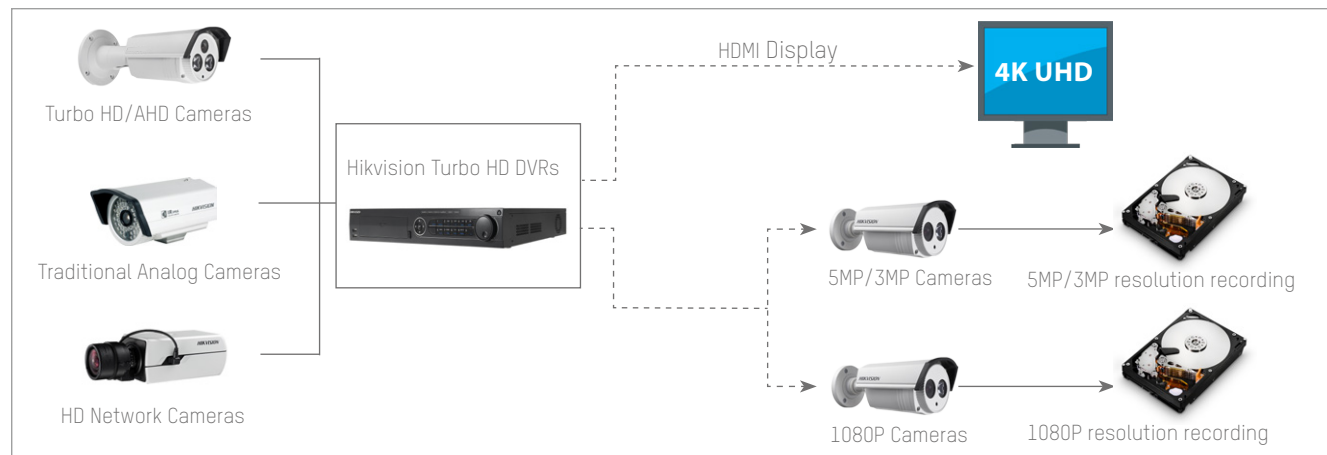
Conventional analog camera



Hikvision Turbo HD analog camera

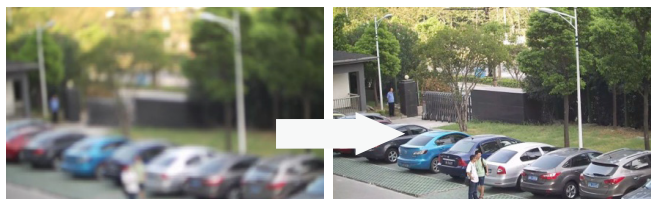
■ Tribrid System

The Hikvision Turbo HD DVR offers simultaneous connections to IP, analog, Turbo HD and third-party AHD cameras. Existing systems can be upgraded by simply replacing the current group of cameras and DVRs, and also by adding IP network cameras to cover new areas. Alternatively, users can keep existing SD cameras and only upgrade the necessary surveillance points to HD. The Turbo HD solution offers seamless compatibility with various third-party HDTV compliant cameras and DVRs for superior flexibility.



■ Smart Detection

The Turbo HD DVR is equipped with smart features such as face detection, defocus detection, and video analytics including traversing virtual plane, intrusion detection, and scene change detection.



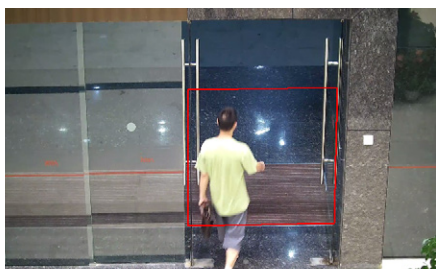
Defocus detection



Scene change detection



Traversing virtual plane



Intrusion detection



Face detection

■ Advanced Manufacturing Level

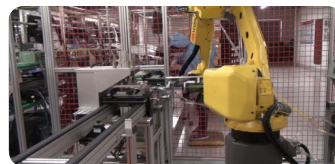
As a manufacturer, Hikvision seeks the highest level of control over product quality, and the manufacturing process greatly contributes to performance of the Turbo HD series. The products are processed in a cleanroom for precise component assembly of camera lenses. In addition, Hikvision uses automation software and rigorous testing to improve production efficiency and ensure consistency. As a result, Hikvision's integrated lens and other product offerings feature high stability and reliability.

The products also undergo environment, aging, and EMC testing — which means that Hikvision Turbo HD products can thrive in extreme temperatures or very specialized environments.

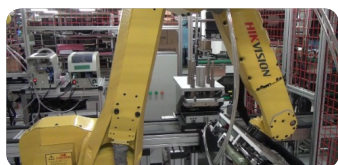


What is Real HD

Because of our advanced, industry-leading manufacturing technologies, the flexible Turbo HD 3.0 Solution offers seamless compatibility with various third-party HDTVI-compliant cameras and DVRs. Your customers don't have to replace each and every component in their setup. With everything you need from cameras to recording devices and more – and extensive compatibility with devices from other manufacturers, too – this easy and affordable solution will upgrade an existing analog CCTV system to high definition. Hikvision helps you solve surveillance installation and extension problems in any situation you encounter.



Auto Assembly



Guarantee of High Quality



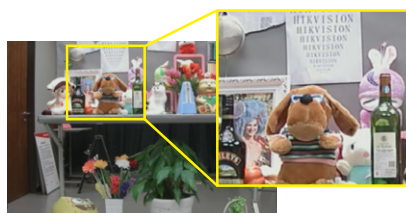
Auto Testing



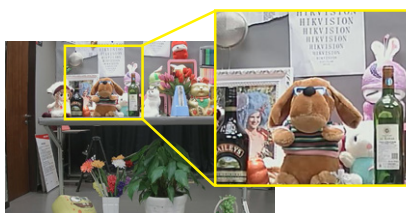
Auto Packaging

■ HD Lens

HD Lens



Conventional lens



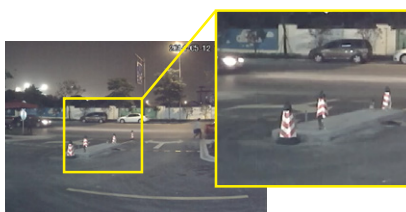
Hikvision lens

Hikvision has professional lens division in R&D department—from design to deployment.

Big Aperture



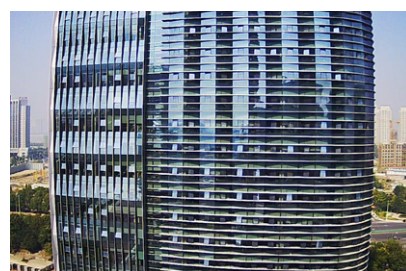
Conventional lens



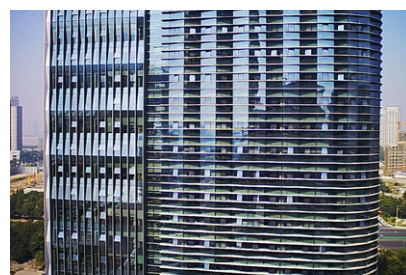
Hikvision lens

With big aperture, Hikvision Turbo HD cameras have better low light performance at night.

Low Distortion



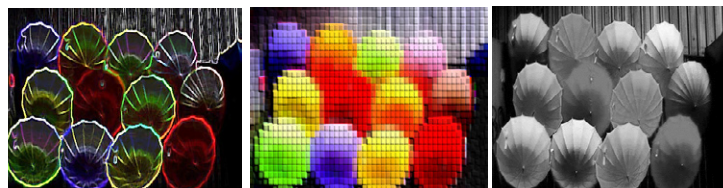
Conventional lens



Low distortion

Hikvision Turbo HD cameras use HD lens with low distortion.

■ HD ISP



Clear

Color

Comfort

Hikvision's ISP provides videos with more details and real color.



Hikvision cameras



Cameras from other brands

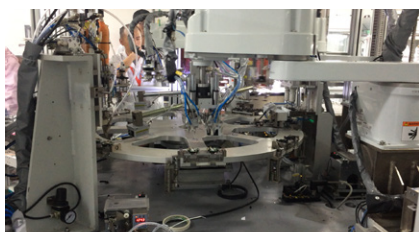
■ Manufacturing

Clean Room



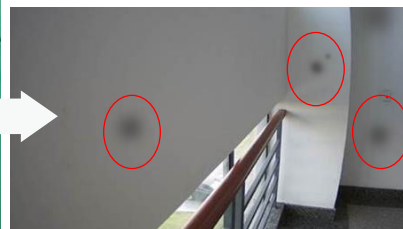
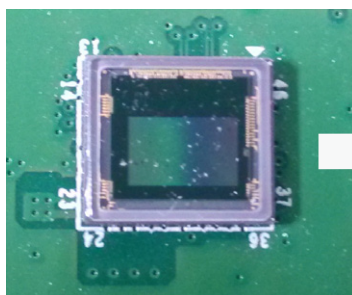
Clean assembly

Automatic Assembly

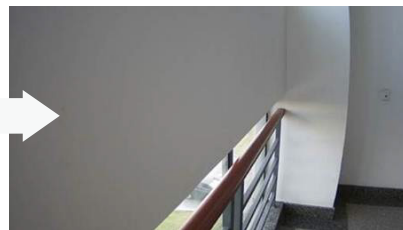
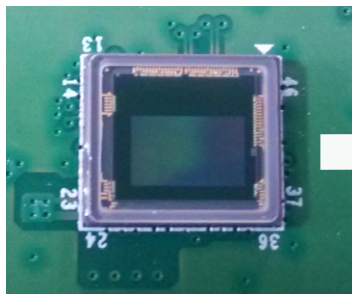


Automatic assembly ensures high efficiency and avoids problems such as defocus.

Comparison

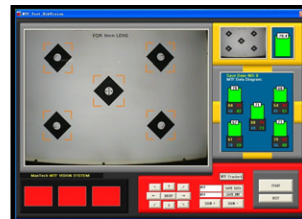
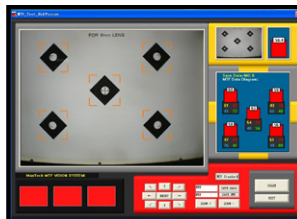
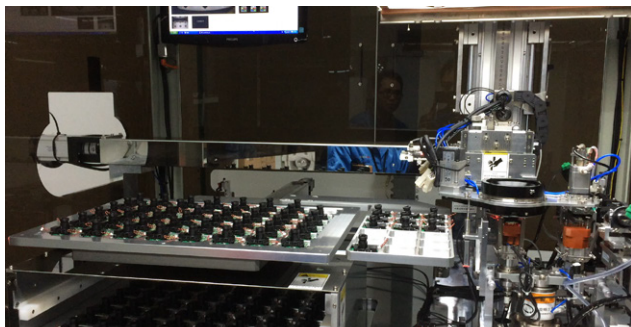


Dust on sensor



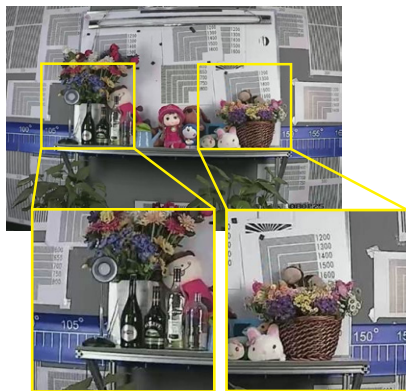
Clean sensor

Automation Software

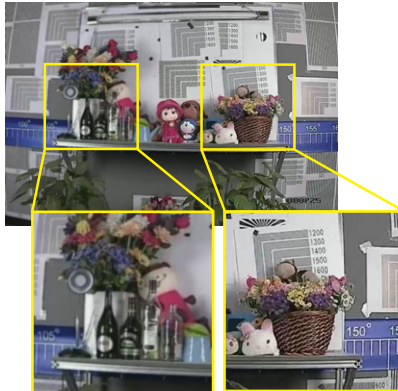


- Hikvision uses automation software and tests machines to improve production efficiency and ensure focus consistency.
- Five blocks must all turn green in the focus station.

Clear & Defocus



Clear



Defocus

Seamless Lens



Hikvision's seamless design with an integrated lens



Other brands' design with a separated lens

■ Reliability

Components

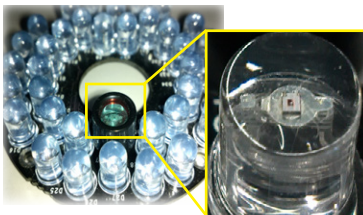
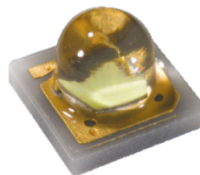


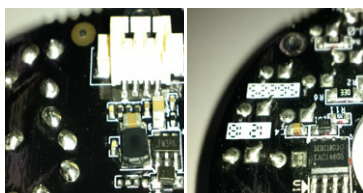
Photo Transistor

Hikvision's photo transistor is environmentally friendly and meets RoHS standards.



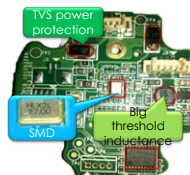
Infrared (IR) LED

Hikvision's IR LED has high reliability and a long lifetime (more than 100,000 hours).



Constant-Current Circuit

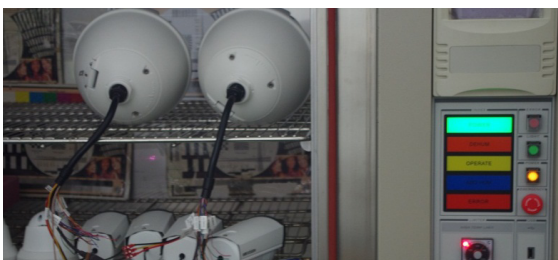
A constant-current circuit chip helps to maintain the IR LED's stability and operational life.



Components

SMD technology, high reliability.

Environmental Testing



Extreme-temperature test cabinet

Temperature

In an extreme-temperature simulation environment, test the devices' working conditions and determine whether there is any change.

Mechanical Environment

Test the devices' performance under vibration, shock, or dropping that may occur during transportation and daily use. Determine whether the IR-cut filter switch functions normally and whether defocus occurs.

Special Environment

Test the protection level of devices' enclosure and accessories under salt mist, water, violence, etc.



Aging room

EMC Test Item—Surge



Surge test device



Test device for electrostatic discharge anti-interference



Electrostatic discharge anti-interference

- Test a single device's or a system's electrostatic discharge anti-interference ability.
- Simulate the electric discharge of operators or objects to the device when in contact or close by.

Turbo HD 720P PTZ



DS-2AE5123TI-A
720P Analog IR PTZ

- 1.3MP CMOS image sensor, HDTVI technology
- 720P video output
- 23X optical zoom, 16X digital zoom
- Up the coax function
- Privacy masking
- 3D DNR, BLC, ICR
- Up to 150m IR distance



DS-2AE4123TI-D
720P Analog IR PTZ

- 1.3MP CMOS image sensor, HDTVI technology
- 720P video output
- 23X Optical Zoom
- DWDR
- Up to 100m IR distance
- 3D intelligent positioning function
- Support Turbo HD and BNC output



DS-2AE4123T-A(3)
720P Analog PTZ

- 1.3MP CMOS image sensor, HDTVI technology
- 720P video output
- 23X optical zoom, 16X digital zoom
- Up the coax function
- 3D DNR, BLC, ICR



DS-2AE4223T-A(3)
1080P Analog PTZ

- 2MP CMOS image sensor, HDTVI technology
- 1080P video output
- 23X optical zoom, 16X digital zoom
- Up the coax function
- 3D DNR, BLC, ICR



DS-2AE4223TI-D
1080P Analog IR PTZ

- 2MP CMOS image sensor, HDTVI technology
- 1080P video output
- 23X Optical Zoom
- DWDR
- Up to 100m IR distance
- 3D intelligent positioning function
- Support Turbo HD and BNC output



DS-2AE5223TI-A
1080P Analog IR PTZ

- 2MP CMOS image sensor, HDTVI technology
- 1080P video output
- 23X optical zoom, 16X digital zoom
- Up the coax function
- Privacy Masking
- 3D DNR, BLC, ICR
- Up to 150m IR distance



DS-2AE5230T-A(3)
1080P Analog PTZ

- 2MP CMOS image sensor, HDTVI technology
- 1080P video output
- 30X optical zoom, 16X digital zoom
- Up the coax function
- Privacy masking
- 3D DNR, BLC, ICR



DS-2AE7230TI-A
1080P Analog IR PTZ

- 2MP CMOS image sensor, HDTVI technology
- 1080P video output
- 30X optical zoom, 16X digital zoom
- Up the coax function
- Privacy masking
- 3D DNR, BLC, ICR
- Up to 120m IR distance

Turbo HD 720P Cameras



DS-2CE56C0T-IRMM
DS-2CE56C0T-IRP
Indoor IR Dome/Eyeball

- 1.0 MP high-performance CMOS
- Turbo HD output, up to 720P resolution
- True Day/Night
- DNR, Smart IR
- Up to 20m IR distance



DS-2CE16C0T-IR(P)
DS-2CE56C0T-IR(M)
Outdoor IR Bullet/Eyeball

- 1.0 MP high-performance CMOS
- Turbo HD output, up to 720P resolution
- True Day/Night
- DNR, Smart IR
- Up to 20m IR distance
- IP66 weatherproof



DS-2CE16C0T-IT1/3/5
Outdoor EXIR Bullet

- 1.0 MP high-performance CMOS
- Turbo HD output, up to 720P resolution
- True Day/Night
- DNR, Smart IR
- Up to 20/40/80m IR distance with EXIR
- IP66 weatherproof



DS-2CE56C0T-IT1/3
Outdoor EXIR Eyeball

- 1.0 MP high-performance CMOS
- Turbo HD output, up to 720P resolution
- True Day/Night
- DNR, Smart IR
- Up to 20/40m IR distance with EXIR
- IP66 weatherproof



DS-2CE56C2T-IRP
Indoor IR Eyeball

- Turbo HD output, up to 720P resolution
- Excellent low-light performance
- True Day/Night
- DNR, Smart IR
- Up to 20m IR distance



DS-2CE16C2T-IR(P)
DS-2CE56C2T-IR(M)
Outdoor IR Bullet/Eyeball

- Turbo HD output, up to 720P resolution
- Excellent low-light performance
- True Day/Night
- DNR, Smart IR
- Up to 20m IR distance
- IP66 weatherproof



DS-2CE16C2T-IT1/3/5
Outdoor EXIR Bullet

- Turbo HD output, up to 720P resolution
- Excellent low-light performance
- True Day/Night
- DNR, Smart IR
- Up to 20/40/80m IR distance with EXIR
- IP66 weatherproof



DS-2CE56C2T-IT1/3
Outdoor EXIR Eyeball

- Turbo HD output, up to 720P resolution
- Excellent low-light performance
- True Day/Night
- DNR, Smart IR
- Up to 20/40m IR distance with EXIR
- IP66 weatherproof



DS-2CE16C2T-VFIR3
DS-2CE56C2T-VFIR3
Outdoor Vari-focal
Bullet/Eyeball

- Turbo HD output, up to 720P resolution
- Excellent low-light performance
- True Day/Night
- DNR, Smart IR
- 2.8 – 12mm vari-focal lens
- Up to 40m IR distance
- IP66 weatherproof



DS-2CE16C5T-IT1/3/5
Outdoor EXIR Bullet

- 1.3MP high-performance CMOS
- Turbo HD output, up to 720P resolution
- Excellent low-light performance
- True Day/Night
- 3D DNR, Smart IR
- Up to 20/40/80m IR distance with EXIR
- IP66 weatherproof



DS-2CE56C5T-IT1/3
Outdoor EXIR Eyeball

- 1.3MP high-performance CMOS
- Turbo HD output, up to 720P resolution
- Excellent low-light performance
- True Day/Night
- 3D DNR, Smart IR
- Up to 20/40m IR distance with EXIR
- IP66 weatherproof



DS-2CE16C5T-(A)VFI3
DS-2CE56C5T-VFI3
Outdoor Vari-focal Bullet/
Eyeball

- 1.3MP high-performance CMOS
- Turbo HD output, up to 720P resolution
- Excellent low-light performance
- True Day/Night
- 3D DNR, Smart IR
- 2.8 – 12mm vari-focal lens
- Up to 40/50m IR distance
- IP66 weatherproof



DS-2CE56C5T-(A)VFI3
Indoor Vari-focal IR Dome

- 1.3MP high-performance CMOS
- Turbo HD output, up to 720P resolution
- Excellent low-light performance
- True Day/Night
- 3D DNR, Smart IR
- 2.8 – 12mm vari-focal lens
- Up to 30m IR distance
- Dual voltage: 12 VDC/ 24 VAC



DS-2CE56C5T-(A)VPI3
Outdoor Vandalproof IR Dome

- 1.3MP high-performance CMOS
- Turbo HD output, up to 720P resolution
- Excellent low-light performance
- True Day/Night
- 3D DNR, Smart IR
- 2.8 – 12mm vari-focal lens
- Up to 40m IR distance
- IP66 weatherproof & Vandal Proof
- Dual voltage: 12 VDC/ 24 VAC

Turbo HD 1080P Cameras



DS-2CE56D1T-IRMM
DS-2CE56D1T-IRP
DS-2CE56D1T-VPI3
Indoor IR Dome/Eyeball

- 2.0MP high-performance CMOS
- Turbo HD output, up to 1080P resolution
- True Day/Night
- DNR, Smart IR
- OSD menu controlled via UTC
- Up to 20m IR distance
- Vandal Proof (DS-2CE56D1T-VPI3)



DS-2CE16D1T-IR(P)
DS-2CE56D1T-IR(M)
Outdoor IR Bullet/Eyeball

- 2.0MP high-performance CMOS
- Turbo HD output, up to 1080P resolution
- True Day/Night
- DNR, Smart IR
- OSD menu controlled via UTC
- Up to 20m IR distance
- IP66 weatherproof



DS-2CE16D1T-IT1/3/5
Outdoor EXIR Bullet

- 2.0MP high-performance CMOS
- Turbo HD output, up to 1080P resolution
- True Day/Night
- DNR, Smart IR
- OSD menu controlled via UTC
- Up to 20/40/80m IR distance with EXIR
- IP66 weatherproof



DS-2CE56D1T-IT1/3
Outdoor EXIR Eyeball Outdoor EXIR Eyeball

- 2.0MP high-performance CMOS
- Turbo HD output, up to 1080P resolution
- True Day/Night
- DNR, Smart IR
- OSD menu controlled via UTC
- Up to 20/40m IR distance with EXIR
- IP66 weatherproof



DS-2CE16D1T-(A)VFI3
DS-2CE56D1T-VFI3
Outdoor Vari-focal Bullet/
Eyeball

- 2.0MP high-performance CMOS
- Turbo HD output, up to 1080P resolution
- True Day/Night
- DNR, Smart IR
- OSD menu controlled via UTC
- 2.8 – 12mm vari-focal lens
- Up to 40m IR distance
- IP66 weatherproof



DS-2CE56D1T-(A)VFI3
Indoor Vari-focal IR Dome

- 2.0MP high-performance CMOS
- Turbo HD output, up to 1080P resolution
- True Day/Night
- DNR, Smart IR
- OSD menu controlled via UTC
- 2.8 – 12mm vari-focal lens
- Up to 30m IR distance
- Dual voltage: 12 VDC/ 24 VAC



DS-2CE56D1T-(A)VPI3
Outdoor Vandalproof IR Dome

- 2.0MP high-performance CMOS
- Turbo HD output, up to 1080P resolution
- True Day/Night
- DNR, Smart IR
- OSD menu controlled via UTC
- 2.8 – 12mm vari-focal lens
- Up to 40m IR distance
- IP66 weatherproof & Vandal Proof
- Dual voltage: 12 VDC/ 24 VAC



DS-2CE16D5T-IR
DS-2CE56D5T-IRM
Outdoor IR Bullet/Eyeball

- 2.0MP high-performance CMOS
- Turbo HD output, up to 1080P resolution
- True Day/Night
- True WDR, 3D DNR, Smart IR
- OSD menu
- Up to 20m IR distance
- IP66 weatherproof



DS-2CE16D5T-IT1/3/5
Outdoor EXIR Bullet

- 2.0MP high-performance CMOS
- Turbo HD output, up to 1080P resolution
- True Day/Night
- True WDR, 3D DNR, Smart IR
- OSD menu
- Up to 20/40/80m IR distance with EXIR
- IP66 weatherproof



DS-2CE56D5T-IT1/3
Outdoor EXIR Eyeball

- 2.0MP high-performance CMOS
- Turbo HD output, up to 1080P resolution
- True Day/Night
- True WDR, 3D DNR, Smart IR
- OSD menu
- Up to 20/40m IR distance with EXIR
- IP66 weatherproof



DS-2CE16D5T-(A)VFI3
DS-2CE56D5T-VFI3
Outdoor Vari-focal EXIR
Bullet/Eyeball

- 2.0MP high-performance CMOS
- Turbo HD output, up to 1080P resolution
- True Day/Night
- True WDR, 3D DNR, Smart IR
- OSD menu
- 2.8 – 12mm vari-focal lens
- Up to 40/50m IR distance with EXIR
- IP66 weatherproof



DS-2CE56D5T-(A)VFI3
Indoor Vari-focal IR Dome

- 2.0MP high-performance CMOS
- Turbo HD output, up to 1080P resolution
- True Day/Night
- True WDR, 3D DNR, Smart IR
- OSD menu
- 2.8 – 12mm vari-focal lens
- Up to 30m IR distance
- Dual voltage: 12 VDC/ 24 VAC



DS-2CE56D5T-(A)VPIR3
Outdoor Vandalproof IR Dome

- 2.0MP high-performance CMOS
- Turbo HD output, up to 1080P resolution
- True Day/Night
- True WDR, 3D DNR, Smart IR
- OSD menu
- 2.8 – 12mm vari-focal lens
- Up to 40m IR distance
- IP66 weatherproof & Vandal Proof
- Dual voltage: 12 VDC/ 24 VAC



DS-2CE16D1T-(A)IR3Z
Motorized Lens Cameras

- 2.0MP high-performance CMOS
- Turbo HD output, up to 1080P resolution
- True Day/Night
- DNR, Smart IR
- OSD menu controlled via UTC
- 2.8 – 12mm Motorized vari-focal lens
- Up to 40m IR distance
- IP66 weatherproof
- Dual voltage: 12 VDC/ 24 VAC



DS-2CE56D1T-IR3Z
Motorized Lens Cameras

- 2.0MP high-performance CMOS
- Turbo HD output, up to 1080P resolution
- True Day/Night
- DNR, Smart IR
- OSD menu controlled via UTC
- 2.8 – 12mm Motorized vari-focal lens
- Up to 40m IR distance
- IP66 weatherproof



DS-2CE56D1T-(A)IRZ
Motorized Lens Cameras

- 2.0MP high-performance CMOS
- Turbo HD output, up to 1080P resolution
- True Day/Night
- DNR, Smart IR
- OSD menu controlled via UTC
- 2.8 – 12mm Motorized vari-focal lens
- Up to 40m IR distance
- IP66 weatherproof



DS-2CE56D1T-(A)VP1R3Z
Motorized Lens Cameras

- 2.0MP high-performance CMOS
- Turbo HD output, up to 1080P resolution
- True Day/Night
- DNR, Smart IR
- OSD menu controlled via UTC
- 2.8 – 12mm Motorized vari-focal lens
- Up to 40m IR distance
- IP66 weatherproof & Vandal Proof
- Dual voltage: 12 VDC/ 24 VAC



DS-2CE16D5T-AIR3ZH
Motorized Lens Cameras

- 2.0MP high-performance CMOS
- Turbo HD output, up to 1080P resolution
- True Day/Night
- True WDR, 3D DNR, Smart IR
- OSD menu
- 2.8 – 12mm Motorized vari-focal lens
- Up to 40m IR distance
- IP66 weatherproof
- Built-in Heater



DS-2CE56D5T-IR3Z
Motorized Lens Cameras

- 2.0MP high-performance CMOS
- Turbo HD output, up to 1080P resolution
- True Day/Night
- True WDR, 3D DNR, Smart IR
- OSD menu
- 2.8 – 12mm Motorized vari-focal lens
- Up to 40m IR distance
- IP66 weatherproof



DS-2CE56D5T-AIRZ
Motorized Lens Cameras

- 2.0MP high-performance CMOS
- Turbo HD output, up to 1080P resolution
- True Day/Night
- True WDR, 3D DNR, Smart IR
- OSD menu
- 2.8 – 12mm Motorized vari-focal lens
- Up to 30m IR distance



DS-2CE56D5T-AVPIR3Z(H)
Motorized Lens Cameras

- 2.0MP high-performance CMOS
- Turbo HD output, up to 1080P resolution
- True Day/Night
- True WDR, 3D DNR, Smart IR
- OSD menu
- 2.8 – 12mm Motorized vari-focal lens
- Up to 40m IR distance
- IP66 weatherproof & Vandal Proof
- Built-in Heater (DS-2CE56D5T-AVPIR3ZH)



DS-2CE16D9T-AIRAZH
5-50mm Motorized lens
Vari-focal Camera

- 2.0 MP high-performance CMOS
- Turbo HD output, up to 1080P resolution
- True Day/Night
- True WDR, 3D DNR, Smart IR
- OSD menu
- 5 – 50mm Motorized vari-focal auto focus lens
- Up to 120m IR distance
- IP66 weatherproof
- Built-in Heater

Turbo HD DVRs



DS-7104/08/16HGH-F1
720P Mini 1U Turbo HD DVR

TURBO HD 3.0

- 4/8/16-ch HD TVI/AHD/analog cameras video&audio input
- HD-TVI/AHD/analog hybrid
- HD-TVI and analog cameras self-adaptive access
- Up to full channel@720P resolution real-time recording
- HDMI and VGA output at up to 1920×1080P resolution
- Long transmission distance over coax cable
- 1SATA, 2 USB2.0



DS-7104/08/16HQHI-F1/N
1080P Mini 1U Turbo HD DVR

TURBO HD 3.0

- 4/8/16-ch HD TVI/analog/AHD cameras video&audio input
- HD-TVI/analog/AHD/IP camera hybrid
- H.264+ video compression
- Full channel@720P resolution real-time and 1080P non real-time recording
- HDMI and VGA output at up to 1920×1080P resolution
- Long transmission distance over coax cable
- 1 SATA, 2 USB 2.0



DS-7104HQHI-SH
Full 1080P Mini 1U Turbo HD DVR

- 4-ch HD TVI/analog cameras video&audio input
- HD-TVI/analog camera hybrid
- HD-TVI and analog cameras self-adaptive access
- Full channel@1080P resolution real-time recording
- HDMI and VGA output at up to 1920×1080P resolution
- Long transmission distance over coax cable
- 1SATA, 2 USB2.0



DS-7104/08/16HGH-E1
720P Mini 1U Turbo HD DVR

- 4/8/16-ch HD TVI/analog cameras video&audio input
- HD-TVI/analog hybrid
- HD-TVI and analog cameras self-adaptive access
- Up to full channel@720P resolution real-time recording
- HDMI and VGA output at up to 1920×1080P resolution
- Long transmission distance over coax cable
- 1SATA, 2 USB2.0



DS-7104/08HGHI-SH
1080P Mini 1U Turbo HD DVR

- 4/8/16-ch HD TVI/analog cameras video&audio input
- HD-TVI/analog/IP camera hybrid
- HD-TVI and analog cameras self-adaptive access
- Full channel@720P resolution real-time and 1080P no-real-time recording
- HDMI and VGA output at up to 1920×1080P resolution
- Long transmission distance over coax cable
- 1SATA, 2 USB2.0



DS-7204/08/16HGHI-F1
DS-7208/16HGHI-F2
720P 1U Turbo HD DVR
TURBO HD 3.0

- 4/8/16-ch HD TVI/AHD/analog cameras video&audio input
- HD-TVI/analog/AHD/IP camera quadruple hybrid
- HD-TVI and analog cameras self-adaptive access
- Up to full channel@720P resolution real-time recording
- HDMI and VGA output at up to 1920×1080P resolution
- Long transmission distance over coax cable
- Front panel and alarm I/O optional
- 1SATA(DS-7204/08/16HGHI-E1)/2 SATA(DS-7208/16HGHI-E2), 2 USB2.0



DS-7204/08/16HQHI-F1/N
1080P 1U Turbo HD DVR
TURBO HD 3.0

- 4/8/16-ch HD TVI/analog/AHD cameras video&audio input
- HD-TVI/analog/AHD/IP camera hybrid
- H.264+ video compression
- Full channel@720P resolution real-time and 1080P non real-time recording
- HDMI and VGA output at up to 1920×1080P resolution
- Long transmission distance over coax cable
- Front panel and alarm I/O optional
- 1 SATA, 2 USB 2.0



DS-7208/16HQHI-F2/N
1080P 1U Turbo HD DVR
TURBO HD 3.0

- 8/16-ch HD TVI/analog/AHD cameras video&audio input
- HD-TVI/analog/AHD/IP camera hybrid
- H.264+ video compression
- Full channel@720P resolution real-time and 1080P non real-time recording
- HDMI and VGA output at up to 1920×1080P resolution
- Long transmission distance over coax cable
- Front panel and alarm I/O optional
- 2 SATA, 2 USB 2.0



DS-7204/08HUHI-F1/N
5MP/3MP 1U Turbo HD DVR
TURBO HD 3.0

- 4/8-ch video & 1-ch audio input
- HD-TVI/analog/AHD/IP camera quadruple hybrid
- 12fps recording at 5MP and 15fps recording at 3MP
- Full channel recording at 1080P resolution
- HDMI output at up to 1920×1080P resolution(DS-7204HUHI-F1/N), support CVBS output
- 4K UHD output (DS-7208HUHI-F1/N)
- Long transmission distance over coax cable
- Front panel and alarm I/O optional
- 1 SATA, 2 USB 3.0



DS-7204/08HUHI-F2/N
5MP/3MP 1U Turbo HD DVR
TURBO HD 3.0

- 4/8/16-ch video & 1-ch audio input
- HD-TVI/analog/AHD/IP camera quadruple hybrid
- 12fps recording at 5MP and 15fps recording at 3MP
- Full channel recording at 1080P resolution
- HDMI output at up to 1920×1080P resolution(DS-7204HUHI-F2/N), support CVBS output
- 4K UHD output (DS-7208/16HUHI-F2/N)
- Long transmission distance over coax cable
- Front panel and alarm I/O optional
- 2 SATA, 2 USB 3.0



DS-7204/08/16HGHI-SH
1080P 1U Turbo HD DVR

- 4/8/16-ch HD TVI/analog cameras video&audio input
- HD-TVI/analog/IP camera triple hybrid
- HD-TVI and analog cameras self-adaptive access
- Full channel@720P resolution real-time and 1080P no-real-time recording
- HDMI and VGA output at up to 1920×1080P resolution
- Long transmission distance over coax cable
- Front panel and alarm I/O optional
- 2 SATA(DS-7216HGHI-SH)/1 SATA(7204/08HGHI-SH), 2 USB2.0



DS-7204/08/16HQHI-SH
Full 1080P 1U Turbo HD DVR

- 4/8/16-ch HD TVI/analog cameras video&audio input
- HD-TVI/analog/IP camera triple hybrid
- HD-TVI and analog cameras self-adaptive access
- Full channel@1080P resolution real-time recording
- HDMI and VGA output at up to 1920×1080P resolution
- Long transmission distance over coax cable
- Front panel and alarm I/O optional
- 2 SATA(DS-7208/16HQHI-SH)/1 SATA(7204HQHI-SH), 2 USB2.0



DS-7204/08/16HGHI-E1
DS-7208/16HGHI-E2
720P 1U Turbo HD DVR

- 4/8/16-ch HD TVI/analog cameras video&audio input
- HD-TVI/analog/IP camera triple hybrid
- HD-TVI and analog cameras self-adaptive access
- Up to full channel@720P resolution real-time recording
- HDMI and VGA output at up to 1920×1080P resolution
- Long transmission distance over coax cable
- Front panel and alarm I/O optional
- 1SATA(DS-7204/08/16HGHI-E1)/2 SATA(DS-7208/16HGHI-E2), 2 USB2.0



DS-7304/08/16HQHI-F4/N
1080P 1.5U Turbo HD DVR

TURBO HD 3.0

- 4/8/16-ch video & 4-ch audio input
- HDTV/analog/AHD/IP camera quadruple hybrid
- Full channel recording at 1080P resolution
- HDMI output at up to 1920×1080P resolution(DS-7304/08HQHI-F4/N), support CVBS output
- 4K UHD output (DS-7316HQHI-F4/N)
- Long transmission distance over coax cable
- 4 SATA, 1 eSATA, 3 USB2.0, gigabit NIC



DS-7304/08/16HQHI-SH
Full 1080P 1.5U Turbo HD DVR

- 4/8/16-ch HD TVI/analog cameras video&audio input
- HD-TVI/analog/IP camera triple hybrid
- HD-TVI and analog cameras self-adaptive access
- Full channel@1080P resolution real-time recording
- HDMI and VGA output at up to 1920×1080P resolution
- Long transmission distance over coax cable
- Gigabit network interfaces
- 4 SATA, 1 eSATA, 3 USB2.0



DS-7304/08/16/24/32HGHI-SH
1080P 1.5U Turbo HD DVR

- 4/8/16/24/32-ch HD TVI/analog cameras video&audio input
- HD-TVI/analog/IP camera triple hybrid
- HD-TVI and analog cameras self-adaptive access
- Full channel@720P resolution real-time and 1080P no-real-time recording
- HDMI and VGA output at up to 1920×1080P resolution
- Long transmission distance over coax cable
- Gigabit network interfaces
- 4 SATA, 1 eSATA, 3 USB2.0



DS-8104/08/16HQHI-F8/N
1080P 2U Turbo HD DVR

TURBO HD 3.0

- 4/8/16-ch video & audio input
- HDTVI/analog/AHD/IP camera quadruple hybrid
- Full channel recording at 1080P resolution
- HDMI output at up to 1920×1080P resolution (DS-8104/08HQHI-F8/N), support CVBS output
- 4K UHD output (DS-8116HQHI-F8/N)
- Long transmission distance over coax cable
- 8 SATA, 1 eSATA, 3 USB2.0, gigabit NIC



DS-8104/08/16/24/32H6HI-SH
1080P 2U Turbo HD DVR

- 4/8/16/24/32-ch HD TVI/analog cameras video&audio input
- HD-TVI/analog/IP camera triple hybrid
- HD-TVI and analog cameras self-adaptive access
- Full channel@720P resolution real-time and 1080P no-real-time recording
- HDMI and VGA output at up to 1920×1080P resolution
- Long transmission distance over coax cable
- Dual Gigabit network interfaces
- 8 SATA, 1 eSATA, 3 USB2.0



DS-8104/08/16HQHI-SH
Full 1080P 2U Turbo HD DVR

- 4/8/16-ch HD TVI/analog cameras video&audio input
- HD-TVI/analog/IP camera triple hybrid
- HD-TVI and analog cameras self-adaptive access
- Full channel@1080P resolution real-time recording
- HDMI and VGA output at up to 1920×1080P resolution
- Long transmission distance over coax cable
- Dual gigabit network interfaces
- 8 SATA, 1 eSATA, 3 USB2.0

ACCESSORIES



DS-1H18
Video Balun



DS-1H33
HDTVI to HDMI Converter



X41T
Camera Tester



DS-1H31
Distributer