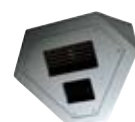


Extreme IP Imaging Quick Guide



BOSCH
Invented for life



Bosch Extreme Imaging		EX7	EX30	EX36	EX80	EX82	EX85
Camera Information	Camera Type	Ceiling-mount No-grip	IP Infrared Imager	Corner-mount No-grip	IP Infrared Imager	IP Infrared Imager	Megapixel IP Infrared Imager
	Camera Options	Color or High Performance Day/Night	High Performance Day/Night	Color or High Performance Day/Night	Standard Resolution Color/Monochrome	High Resolution Color/Monochrome	Megapixel Color/Megapixel Monochrome
Imaging	Image Sensor Type	1/3" CCD	1/3" CCD	1/3" CCD	1/3" CCD	1/3" CCD	1/2" CMOS Color Sensor, 3.1 Megapixel 1/2" CMOS Mono. Sensor, 3.1 Megapixel
	Day/Night	Optional	Yes	Optional	Yes	Yes	Yes
	IR Sensitive	Optional	Yes	Optional	Yes	Yes	Yes
	Dynamic Range (WDR)	No	No	No	No	No	60 dB
	Pan/Tilt/Zoom (PTZ)	No	No	No	No	No	Digital PTZ
	Intelligent Video Analytics (IVA)**	Yes	Yes	Yes	Yes	Yes	No
	Tamper Detection	Yes	Yes	Yes	Yes	Yes	No
	Video Motion Detection	Yes	Yes	Yes	Yes	Yes	Yes (Programmable Mask)
	Backlight Compensation	No	No	No	No	No	Yes
	Auto Black	No	No	No	No	No	No
	Lens	4-9 mm Auto-iris, IR Corrected 9-22 mm Auto-iris, IR Corrected 5-50 mm Auto-iris, IR Corrected	5-50 mm Auto-iris, IR Corrected	2.5 mm, 3.6 mm	4-9 mm Auto-iris, IR Corrected	4-9 mm Auto-iris, IR Corrected 9-22 mm Auto-iris, IR Corrected	8mm, 12 mm, 25 mm, 50 mm
Sensitivity (lux)	Minimum Illumination (day mode)	2.7 F1.4 Color	0.02 F1.4 Day/Night	2.7 F1.4 Color	1.0 F2	2.7 F1.4	1.0 F1.4
	Extended Sensitivity (night mode)	0.06 F1.4 Day/Night	0 - Active IR Models	0.06 F1.4 (Non-IR D/N Models) 0 - Active IR Models	0 - Active IR Models	0 - Active IR Models	0 - Active IR Models
Infrared	Wavelength	n/a	850 nm or 940 nm	850 nm or 940 nm	850 nm or 940 nm	850 nm or 940 nm	850 nm
	Night Vision Maximum Range	n/a	100 m @ 850 nm	12 m @ 850 nm	60 m @ 850 nm	75 m @ 850 nm	130 m @ 850 nm
IP Streaming	Compression/Multistreaming	(2) MPEG-4 (1) JPEG	(2) MPEG-4 (1) JPEG	(2) MPEG-4 (1) JPEG	(2) MPEG-4 (1) JPEG	(2) MPEG-4 (1) JPEG	5 JPEG Streams
	Multi-resolution Windowing	No	No	No	No	No	Up to 8
	Images Per Second Color (max.)	30 @ 4CIF	30 @ 4CIF	30 @ 4CIF	30 @ 4CIF	30 @ 4CIF	20 @ 1920 x 1200
	Maximum Resolution	704 x 576 PAL	704 x 576 PAL	704 x 576 PAL	704 x 576 PAL	704 x 576 PAL	2040 x 1530
Communication	Hybrid (composite video output)	Yes	Yes	Yes	Yes	Yes	No
	Ethernet	10/100 Base T	10/100 Base T	10/100 Base T	10/100 Base T	10/100 Base T	10/100 Base T
	Alarm Input/Output	No	No	No	No	No	No
	Local via Built-in OSD	No	No	No	No	No	No
Power	Input Voltage	12-24 VAC or VDC	12-24 VAC or VDC	12-24 VAC or VDC	12-24 VAC or VDC	12-24 VAC or VDC	12-24 VAC or VDC
	Power Over Ethernet (POE)	No	No	No	No	No	No
	Power Consumption	5W	36W (with IR)	11W Max. (with IR)	36W Max.	36W Max.	24W Max.
Environmental	Operating Temperature	-25° C to +60° C	-50° C to +50° C	-50° C to +50° C	-50° C to +50° C	-50° C to +50° C	-40° C to +50° C
	Vandal Resistant	Yes (with back plate)	No	Yes	No	No	No
	All-weather Rating	IP66	IP67 / NEMA4X	n/a	IP67 / NEMA4X	IP67 / NEMA4X	IP67 / NEMA4X

Extreme IP Imaging Quick Guide



BOSCH
Invented for life

	Key Features					
	EX7	EX30	EX36	EX80	EX82	EX85
	<ul style="list-style-type: none"> Patented No-Grip anchor-free design is impossible to grip or hang from, providing maximum safety for high risk environments such as prison cells and hospitals Innovative design allows for wiring directly along walls and ceilings for corridor surveillance Available with active infrared night vision at 940 nm for covert illumination and effective night-time imaging under any ambient lighting conditions IVA (Intelligent Video Analysis)-ready for intelligence at the edge, detecting and alerting for user-defined events such as lines being crossed, loitering and objects left behind or removed from the scene IP Infrared Imaging design harnesses the power of infrared illumination to deliver outstanding images day or night, integrating seamlessly with existing IP network infrastructure iSCSI recording 					
	<ul style="list-style-type: none"> Award-winning Black Diamond technology combined with precision engineered optics for High-Fidelity detection-level night-time imaging performance to 100 m in total darkness Day/Night 540 TVL sensor with mechanical filter technology IVA (Intelligent Video Analysis)-ready for intelligence at the edge, detecting and alerting for user-defined events such as lines being crossed, loitering and objects left behind or removed from the scene IP Infrared Imaging design harnesses the power of infrared illumination to deliver outstanding images day or night, integrating seamlessly with existing IP network infrastructure Black Diamond illumination reduces night-time image noise for improved compression performance and low bit rates while delivering the necessary details for effective night-time function of video analytics iSCSI recording Field-proven IP67/NEMA4X all-weather design for long-term reliable performance in harsh environments 					
	<ul style="list-style-type: none"> Patented No-Grip anchor-free design is impossible to grip or hang from, providing maximum safety for high risk environments such as prison cells and hospitals Innovative 45° tilt eliminates blind spots and enables vandal resistant surveillance of the entirety of a 5 x 5 m room, including of the floor beneath the camera itself Available with active infrared night vision at 940 nm for covert illumination and effective night-time imaging under any ambient lighting conditions IVA (Intelligent Video Analysis)-ready for intelligence at the edge, detecting and alerting for user-defined events such as lines being crossed, loitering and objects left behind or removed from the scene IP Infrared Imaging design harnesses the power of infrared illumination to deliver outstanding images day or night, integrating seamlessly with existing IP network infrastructure iSCSI recording 					
	<ul style="list-style-type: none"> Award-winning Black Diamond technology combined with precision engineered optics for High-Fidelity detection-level night-time imaging performance to 60 m in total darkness 480 TVL 1/3" color CCD for vivid daytime color, 420 TVL 1/3" monochrome CCD for award-winning night vision IVA (Intelligent Video Analysis)-ready for intelligence at the edge, detecting and alerting for user-defined events such as lines being crossed, loitering and objects left behind or removed from the scene IP Infrared Imaging design harnesses the power of infrared illumination to deliver outstanding images day or night, integrating seamlessly with existing IP network infrastructure Black Diamond reduces night-time image noise for improved compression performance and low bit rates while delivering the necessary details for effective night-time function of video analytics iSCSI recording Field-proven IP67/NEMA4X all-weather design for long-term reliable performance in harsh environments 					
	<ul style="list-style-type: none"> Award-winning Black Diamond technology combined with precision engineered optics for High-Fidelity detection-level night-time imaging performance to 75 m in total darkness 500 TVL 1/3" color for outstanding daytime color, 540 TVL 1/3" mono CCD for award-winning night vision IVA (Intelligent Video Analysis)-ready for intelligence at the edge, detecting and alerting for user-defined events such as lines being crossed, loitering and objects left behind or removed from the scene IP Infrared Imaging harnesses the power of infrared illumination to deliver outstanding images day or night, integrating seamlessly with existing IP network infrastructure Black Diamond reduces night-time image noise for improved compression performance and low bit rates while delivering the necessary details for effective night-time function of video analytics iSCSI recording Field-proven IP67/NEMA4X all-weather design for long-term reliable performance in harsh environments 					
	<ul style="list-style-type: none"> 3.1 megapixel day sensor / 1.3 megapixel night-time sensor for superior image detail, a 10x increase in resolution over typical high performance CCDs for 24/7 optimized performance of video analytics Award-winning Black Diamond technology for the industry's most advanced night vision High-definition, detection-level night vision at 128 m in total darkness Innovative Bit-Reduce technology minimizes bit rate without compromising image quality IP Infrared Imaging design optimizes the combined benefits of IP and Infrared for critical imaging applications Field-proven IP67/NEMA4X all-weather design for long-term reliable performance in harsh environments Reduced long-term costs: savings on fewer cameras, reduced installation costs, greater scalability 					
	EX7 Ordering Information	EX30 Ordering Information	EX36 Ordering Information	EX80 Ordering Information	EX82 Ordering Information	EX85 Ordering Information
	NEC-070V04-21W	NEI-308V05-11B	NEC-360F02-21W	NEI-808V04-21B	NEI-828V04-21B	EX85D8IP08B
	NEC-070V04-11W	NEI-309V05-21B	NEC-360F02-11W	NEI-808V04-11B	NEI-828V04-11B	EX85D8IP12B
	NEC-070V09-21W	NEI-309V05-11B	NEC-360F04-21W	NEI-809V04-21B	NEI-829V04-21B	EX85D8IP25B
	NEC-070V09-11W	NEI-308V05-21W	NEC-360F04-11W	NEI-809V04-11B	NEI-829V04-11B	EX85D8IP50B
	NEC-070V05-21W	NEI-308V05-11W	NEI-368F02-21W	NEI-808V04-21W	NEI-828V09-21B	
	NEC-070V05-11W	NEI-309V05-21W	NEI-368F02-11W	NEI-808V04-11W	NEI-828V09-11B	
	NEN-070V04-21W	NEI-309V05-11W	NEI-368F04-21W	NEI-809V04-21W	NEI-829V09-21B	
	NEN-070V04-11W		NEI-368F04-11W	NEI-809V04-11W	NEI-829V09-11B	
	NEN-070V09-21W		NEI-369F02-21W		NEI-828V04-21W	
	NEN-070V09-11W		NEI-369F02-11W		NEI-828V04-11W	
	NEN-070V05-21W		NEI-369F04-21W		NEI-829V04-21W	
	NEN-070V05-11W		NEI-369F04-11W		NEI-829V04-11W	

Note: regarding ordering codes, -21 refers to NTSC, -11 to PAL