

## System/85 console accessories to keep your space organised and functional

### Universal Task Chairs



**Universal Task Chair.** Scientifically designed seat and backrest provide proper ergonomic support with remarkable comfort. Independently articulating seat and back adjustments can be locked. Gas lift cylinder seat height adjustment. Five-Star base with twin-disc carpet castors. 100% Nylon fabric with 3M Scotchgard® protector. 33-39"H x 18"W x 17"D (838-991 x 457 x 432mm). Select Model number from colour chart below.

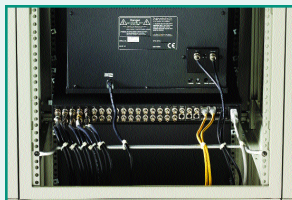
Shpg. wt. 16.4 kgs.



Maroon 11732    Grey Navy 11736    Dusty Rose 11737    Pewter 11738    Black 11739

**Optional Loop Arms. Black vinyl support arms.**

11740 Shpg. wt. 2.7 kgs. pair.



**Rack Mount Cable Guide.** Helps prevent accidental disconnecting of cables and provides a longer life span. Aluminum bar stock.

85276 Shpg. wt. 1 kg.



**Rack Mountable 1/2" Tape Bin.** Uses 10-1/2" (6U) of rack space and holds twelve 1/2" tapes. Cavity width is 1-3/16" (30mm). Charcoal Grey.

60720 Shpg. wt. 3.6 kgs.

### Mobile Carts and Accessories



**BETACAM or VHS Tape Truck.** Organizes and stores 192 cased VHS or BETA-CAM tapes. Will hold 256 VHS tapes in the cardboard sleeves. Order plastic dividers separately, see page 175. Brown ends with Cream shelves. Overall size: 51"H x 36-1/2"W x 18"D (1295 x 927 x 457mm).  
50089 Shpg. wt. 31.8 kgs.



**19-1/4" Equipment Cart.** An affordable cart for studio or mobile use. Comes complete with two shelves and four removable 19-1/4" (11U) rack rails. Two position bottom shelf can be fixed at center height for compact electronics. Sturdy, strong, heavy-duty steel construction. Charcoal Grey enamel finish. Rolls easily on 3-inch dual-wheel castors. Two locking castors for operating stability. 30"H x 21"W x 26"D (762 x 533 x 660mm). Charcoal Grey.  
K8706 Shpg. wt. 24.6 kgs.

T7004

**Locking Table Top Storage Cabinet.** Convenient storage for a variety of media. Each drawer stores 26 VHS, 117 CDs, 81 Audio tapes or 32 each 3480 Data cartridges. Light Grey.

**Two-Drawer Unit.** 15-7/16"H x 20"W x 18-1/4"D (392 x 508 x 464mm).  
T7002 Shpg. wt. 28.6 kgs.

**Four-Drawer Unit.** 30-1/8"H x 20"W x 18-1/4"D (765 x 508 x 464mm).  
T7004 Shpg. wt. 57.3 kgs.

