



OPTIONAL ACCESSORIES

Monitor Masks



85319

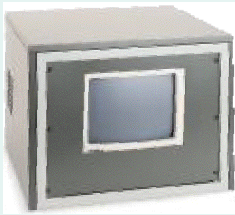
Locking Lift-Up Plexiglas Door. 1/8" Clear acrylic comes with mounting panel and adjustable hinges to protect non-rack mount monitors and electronics. Must be used with stationary shelf. (Model 86088 or 84089 for 19"W racks, and 81080 for 22"W racks).

Finished size: 19-1/4"H (11U) x 19"W (483mm).

85319 Shpg. wt. 2.7 kgs.

Finished size: 19-1/4"H (11U) x 22"W (559mm).

81319 Shpg. wt. 2.8 kgs.



10982

Monitor Mask. Black and Charcoal Grey 1/8" plastic monitor shield. Uses 14" (8U) of rack space and comes with three different cut-out sizes. Use with optional stationary shelf (Model 81080, 84089 or 86088).

14" (8U) Cutout size: 11"W x 8-3/16"H (279 x 208mm).

10981 Black Shpg. wt. .5 kg.

10982 Charcoal Grey Shpg. wt. .5 kg.

14" (8U) Cutout size: 12-5/16"W x 9-1/4"H (312 x 235mm).

10983 Black Shpg. wt. .5 kg.

10984 Charcoal Grey Shpg. wt. .5 kg.

19-1/4" (11U) Cutout size: 16"W x 14"H (406 x 357mm).

10985 Black Shpg. wt. .5 kg.

10986 Charcoal Grey Shpg. wt. .5 kg.

19-1/4" (11U) Mask Without a Cutout (Not shown). Use a utility knife to cut opening to size. 19"W x 19-1/4"H (483 x 489mm).

10989 Black Shpg. wt. 1 kg.

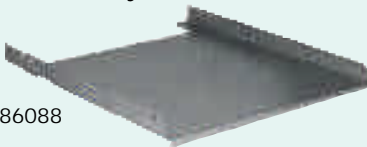
10990 Charcoal Grey Shpg. wt. 1 kg.

Extra Wide Mask Without a Cutout (Not shown).

22"W x 19-1/4"H (559 x 489mm).

10991 Shpg. wt. 1 kg.

Stationary Shelves



86088

Stationary Shelf for 22-5/8" to 26"D (575-660mm) Racks. Flat shelf for Winsted racks with inner rack rails. 1/2"H x 18-1/2"W x 20-1/4"D (13 x 470 x 514mm). Cannot be used with Pro series racks. Charcoal Grey.

86088 Shpg. wt. 4.6 kgs.

Stationary Shelf for 16" to 19-3/8"D (406-492mm) Racks. Flat shelf for Winsted rack with inner rack rails. 1/2"H x 18-1/2"W x 13-5/8"D (13 x 470 x 346mm). Cannot be used with Pro series racks. Charcoal Grey.

84089 Shpg. wt. 3.6 kgs.

Extra-Wide Stationary Shelf. Flat shelf for Extra-Wide consoles. Mounts into the base or the slope of Extra-Wide racks. Must use this shelf if installing non-rack mount electronics. 1/2"H x 21-3/4"W x 22"D (13 x 553 x 559mm). Charcoal Grey.

81080 Shpg. wt. 5.5 kgs.

Monitor Rack Kits



Monitor Rack Mount Kit. 19-1/4" (11U) Rack mount kit holds up to four small monitors or VCRs. Bolts to the outer rack rails of a slope or vertical rack (22" depth minimum). Comes with adjustable back stops. Each monitor opening size: 9-1/2"H x 18-1/8"W (241 x 460mm). Holds two VCRs. Two additional optional VCR shelves (Model 88193) can be added for a total of four VCRs. Each VCR opening size when mounting four is: 4-1/4"H x 18-1/8"W x 20-1/2"D (108 x 460 x 521mm). Black enamel finish.

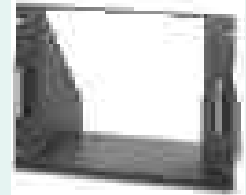
G8801 Shpg. wt. 12.3 kgs.

VCR Shelf for G8801. Use to mount additional VCRs into the G8801 rack mount kit. Can use two additional shelves per kit. Black.

88193 Shpg. wt. 3.2 kgs.

Sony 14" Monitor Rack Mount Kit. Fits Sony's PVM-14M2U/14M4U, PVM-14N1U/14N2U, and PVM-1354/1355 monitors. Uses 14" (8U) of rack space. Charcoal Grey.

85260 Shpg. wt. 5.9 kgs.



11082



11081

Wall Mount Monitor Shelves. Available in two tray sizes: Both offer 16" centers for wall mounting with adjustable tilting tray for better viewing angle. 1/2"H (13mm) front retainer lip and 5/16" x 1-1/2" (8 x 38mm) long slots for 96"L (2439mm) Monitor safety strap (included). Finish: Charcoal Grey baked enamel finish.

11081 17"W x 18"D (432 x 457mm) Shpg. wt. 5 kgs.

11082 33"W x 18"D (838 x 457mm) Shpg. wt. 6.4 kgs.

**Winsted Ships
WORLDWIDE
Call For Pricing
& Delivery**