

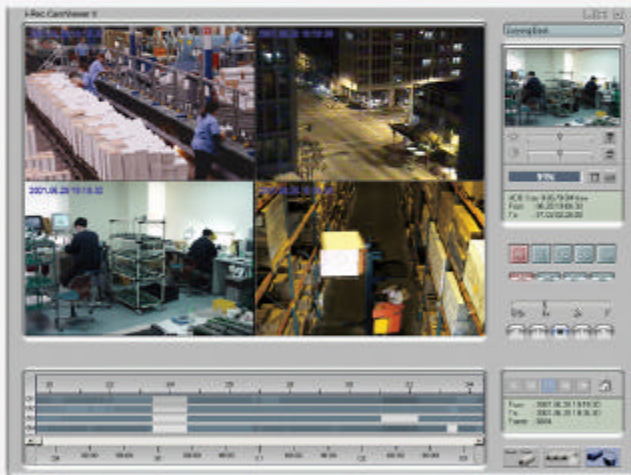
i-Rec CAM104

"The Simple Solution for Remote Surveillance"



**The World Smallest 4-channel
Camera Style Net DVR**

i-Rec Cam Viewer



KEY FEATURES

- The smallest setting area (All-in-one Camera DVR)
- Real-time Image monitoring & recording over net work
- Configuration of various recording conditions (time, sensor, recording speed....)
- Monitoring & Recording at once
- Configuration of various monitoring conditions
- Easy setting
- Max. Recording rate: 30fps/1ch, 4fps/4ch
- RS 232 and 485 supports for P/T/Z control
- 2 External sensors support
- 4 Channel support
- Cam Viewer S/W supports for simultaneous management
- Digital output support

IDEAL FOR

- Integration into larger systems
- Day care centers
- Monitoring points of sale areas
- Schools
- Nanny Cam
- Covert operations
- Small 4 channel retail settings
- Home security
- Outdoor parking lots
- Warehouse/Industrial yards

The Cam 104 has a built-in hard drive to store recorded images and 4 channels are available for external camera connection. The Cam 104 is an all in one camera, DVR, network server, and quad split.

The Cam 104 is ideal for small and large applications. Video compression is done by Wavelet. Image file sizes are about five times smaller than comparable JPEG files for efficient storage and image viewing. Wavelet images are also court admissible unlike standard MPEG or JPEG images. The Cam 104 is remote surveillance made easy. Connection to the Internet can take as little as five minutes!

Take the easy step to digital and the Internet with the smallest DVR in the world, the affordable i-Rec Cam 104

i-Rec Cam104

“Perfect Security Guard”

Specifications

Hardware

32bit RISC Embedded processor
Flash memory: 8Mbyte
RAM: 16Mbyte
OS: Embedded Linux

Dimension

74mm x 95 mm x 185 mm, 0.7kg

Storage Device

10GB and 20GB (Upgradable for more capacity)

Image Resolution Control

720X486, 720X243, 360X243, 180X121, 90X60

Image Compression

Compression Algorithm: Wavelet
Compression Rate: 10:1 ~200:1

Performance (on 360X243)

Transfer Rate: Max. 30fps(NTSC) / 25fps(PAL)
Recording Rate: Max. 30fps(NTSC) / 25fps(PAL)

Video Channel

NTSC or PAL video format are supported
1Ch. Internal Video Output (Internal Camera)
4Ch. External Video Input (DB-15 Connector)

CCD Element

1/3 inch CCD, 410K pixels
Lens mount: C/CS
Digital zoom: 2x
Sensitivity: 3Lux (F1.3)
Auto iris: Electric shutter

Standard Lens

C Mount, Fixed F1.3, Fixed 8mm

Cam Viewer System Requirements

Processor: Pentium II 266 and above (Pentium III 500 recommended)
Ram: 64 MB and above
OS: Windows 98/Me/2000/NT

Management and Software Upgrades

Remote System Configuration via Network
Software Upgrades via Network

Security

Password (Based User or Administrator Authentication)
IP-filtering (Secure Mode)

Alarms and I/O

Software-controlled twodigital inputs
Software-controlled one digital output

MISC. function

High quality image area setting
Image quality Control (10 Levels)
Off-line recording
Remote date back-up
Self-contained file system
Configuration of various recording conditions (time, sensor, recording speed.....)
Schedule Recording

Simultaneous User Support

Monitoring: Max. 5 persons
Search & Administration: 1 person

Power Supply

Input: AC 100~240V, 50~60 Hz, 0.3A
Output: DC 12V, 1.5A

Network

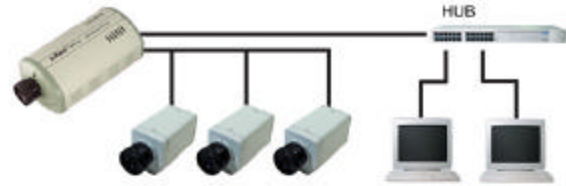
Protocol: TCP/IP, ARP, RARP, and ICMP
Line: 10-Base T Ethernet (RJ-45)

PTZ control

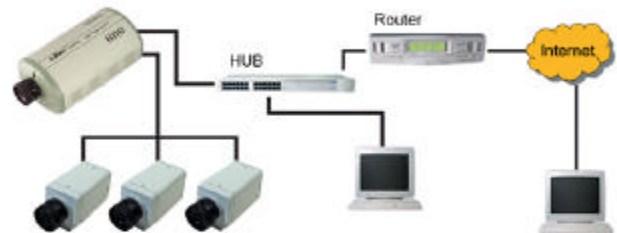
1 Ch. RS232, 1 Ch. RS485
Multiple PTZ devices are supported via RS485

Network Configuration Diagram

1. Connection on LAN



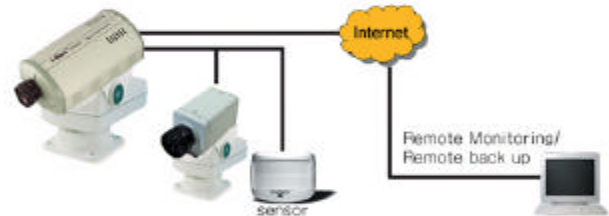
2. Connection on dedicated line with a Router



3. Connection on xDSL / Cable Modem line



4. Connection with external devices



Application Service

CRS (Cam Registration Service)

Service that helps User find Dynamic IP easily at Dynamic IP Registration Server, when i-Rec Cam is connected on xDSL or Cable Modem

Cam Naming Service

Service that endows i-Rec Cam with Domain Name and maps between IP Address and Domain Name



Rear View

—Specifications are subject to change without notice—

Distributed by :

WEBGATE INC.
Connectivity Leader

WEBGATE Inc.

4F, Pika Bldg., 894-20, Hoky 2-Dong, Dongan-Ku, Anyang-Si, Kyunggi-do, Korea. (431-836)

TEL : +82-31-455-3555 FAX : +82-31-455-3955

E-Mail : Sales@webgateinc.com

Http://www.webgateinc.com