

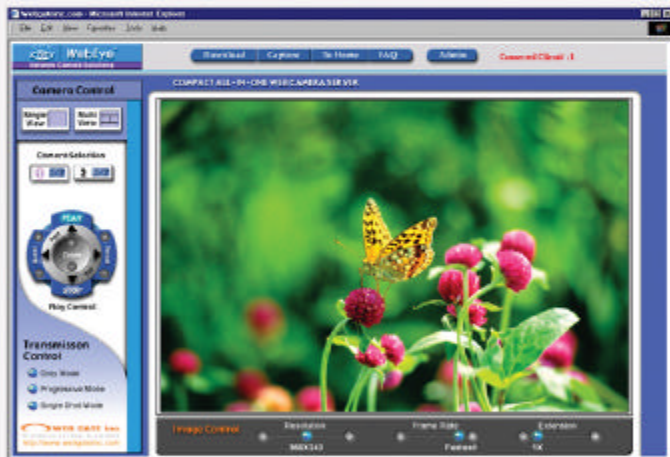
# WebEye E10

*" Perfect for Any Occasion "*



**Compact All-in-one  
Web Server Camera**

## Internet homepage of WebEye E10



### KEY FEATURES

- Monitoring over Network
- Alterable 4.5 MB Flash Memory for Homepage Customization
- Max. 100 Simultaneous Users Support
- Audio Support (Audio Support Kit is Optional)
- Embedded Linux OS For Excellent Stability and Less Downtime
- Wavelet Compression (30-300% greater efficiency than JPEG) for Higher Refresh Rate and Crisper Images
- 2 Channel Support
- External Sensors Support
- Digital Output Support
- Encryption Capability for Added Security
- E-Mail Function to Send Images when Sensors Triggered
- Easy Setting
- Dynamic IP (DHCP, Floating IP) support(when you use xDSL, Cable Modem)
- Accessible through Windows, Mac, Linux, and Unix

View real time images over the Internet with the affordable WebEye E-10. The E-10 utilizes the most efficient video compression technology for faster transmission of images over the Internet.

This means pictures are less choppy and smoother than with other camera servers. In fact, the video quality in the E-10 is usually only available from much more expensive systems. The E-10 can be installed onto the Internet or local networks within minutes, and crisp, high quality video can be enjoyed by up to 100 simultaneous users. The WebEye E10 also has 4.5 MB of configurable flash memory, FTP function for image archiving, and supports two way audio for remote surveillance, video conferencing, chatting, web site hosting...the possibilities are only limited by your imagination.

### IDEAL FOR

- Remote Surveillance
- Video Conferencing
- Personal Web Site Hosting
- Small Business Web Site Hosting
- Real Time Video on your Web Site
- Video Chatting



**WebEye Manager**  
Program for Windows which enables Simultaneous Management, Monitoring, and Recording of Several WebEyes



**WebEye A10**  
(Audio Support Kit)  
Simultaneous Transmission of Video and Audio with RS232 Port

# WebEye E10

“Vivid Real-time Image on Internet”

## Specifications

### Hardware

32bit RISC Embedded processor  
Flash memory: 8Mbyte  
RAM: 16Mbyte  
OS: Embedded Linux

### Dimension

45mm x 92mm x 146mm, 187g

### Image Resolution Control

720X486, 720X243, 360X243, 180X121  
90X60

### Image Compression

Compression Algorithm: Wavelet  
Compression Rate: 10:1 ~200:1

### Performance (on 360X243)

Transfer Rate: Max up to 30fps(NTSC),  
25fps(PAL)

### Video Channel

NTSC or PAL video format are supported  
1Ch. Internal Video Output (Internal  
Camera)  
1Ch. External Video Input (DB-15  
Connector)

### CCD Element

1/4 inch CCD, 270K pixels  
Lens mount: Fixed  
Sensitivity: 5Lux  
Auto iris: Electric shutter

### Standard Lens

Fixed Mount, Fixed F2.0, Fixed 3.8mm

### Management and Software Upgrades

Remote System Configuration via  
Network  
Software Upgrades via Network

### Security

Password (Based User or Administration  
Authentication)  
IP-filtering (Secure Mode)  
Image Encryption

### Alarms and I/O

Software-controlled two alarms inputs  
Sending e-mail automatically  
Sending the images files through FTP  
automatically

### MISC. function

High Quality Image Area Setting  
Image Quality Control (10 Levels)  
Periodic Sending of Images through E-  
Mail and FTP  
4.5 MB Flash Memory for Homepage  
Customization

### Power Supply (included)

Input: AC 100~240V, 50~60Hz, 0.3A  
Output: DC 5V, 1.5A

### Browser

MS Internet Explorer Ver 5.0 or Later  
Netscape Ver 4.7 or Later  
JAVA Applet for non PC User (MAC  
or Unix)

### System Requirements

Processor: Pentium II 266 and above  
(Pentium III 500 recommended)  
Ram: 64 MB and above  
OS: Windows 98/Me/2000/NT

### Network

Protocol: TCP/IP, ARP, RARP, ICMP  
DHCP, FTP, SMTP, PPP, and PPPoE  
Line: 10-Base T Ethernet (RJ-45)

### PTZ control

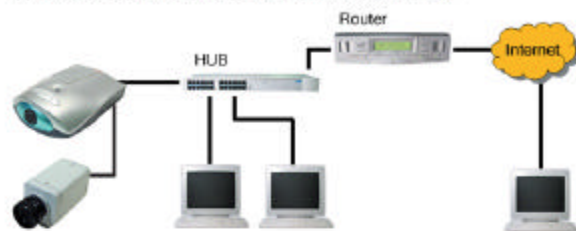
2 Ch. RS232

### SDK Support (not for individual user)

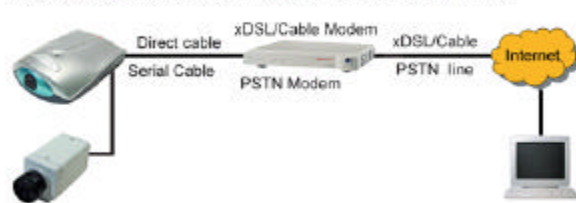
Program that enables Various Applications

## Network Configuration Diagram

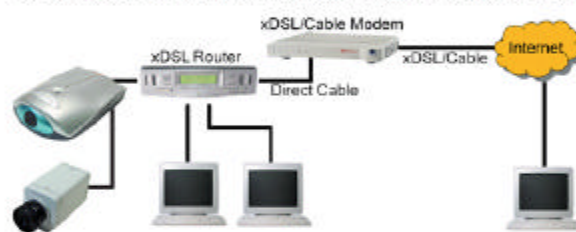
### 1. Connection on dedicated line with a Router



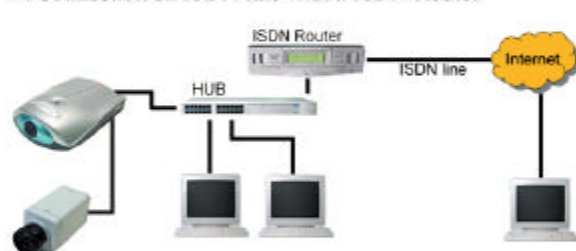
### 2. Connection on xDSL / Cable / PSTN Modem line



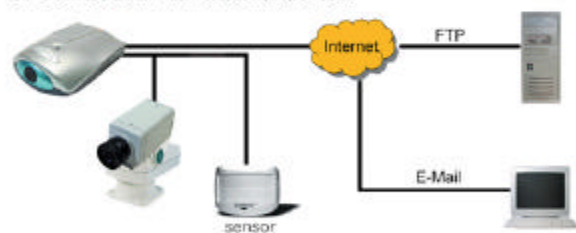
### 3. Connection on xDSL / Cable Modem line with a xDSL Router



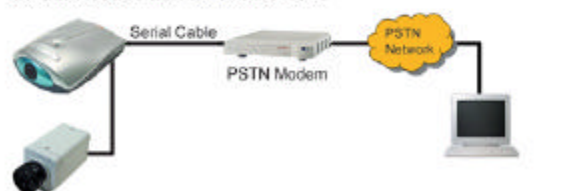
### 4. Connection on ISDN line with a ISDN Router



### 5. Connection with external devices



### 6. Connection to PSTN Network



Rear View

---\*Specifications are subject to change without notice\*---

Distributed by :

**WEBGATE Inc.**  
Connectivity Leader

### WEBGATE Inc.

4F, Pika Bldg., 894-20, Hoky 2-Dong, Dongan-Ku, Anyang-Si,  
Kyunggi-do, Korea. (431-836)  
TEL : +82-31-455-3555 FAX : +82-31-455-3955  
E-Mail : Sales@webgateinc.com  
Http://www.webgateinc.com