

DS412

"Recording Server Solution"

System Specifications with Analog Video Inputs

Hardware

32bit RISC Embedded processor (200MIPS)
Flash memory: 8Mbyte
RAM: 64Mbyte
OS: Embedded Linux

Dimension

306mm x 280mm x 67mm,
3.5kg (with 80GB HDD)

Storage Device

Int.: 2 HDD bays
Ext: 3 IEEE 1394 (FireWire) connection ports
Supports Disk Management Tool for all disks
(Reboot is required when HDD changed)
Total manageable capacity: 4 TB

Image Quality Control

5 Levels: Q1-Q5

Image Compression

Compression Algorithm: Differential Wavelet
Compression Rate: 20:1 ~500:1
Average file size: 1 ~ 5KB (Standard Quality)

Video Channel

NTSC or PAL video format are supported
4Ch. video inputs via BNC connector
2Ch. video outputs via BNC connector

Recording Performance (Analog Ch.)

Max. 60ips (NTSC) / 50ips (PAL) in total
Max. 30ips (NTSC) / 25ips (PAL) per channel
if 2ch used
Max. 15ips (NTSC) / 12ips(PAL) per channel
if 4ch used

Schedule Recording

Daily: Day / Night
Weekly: Weekdays / Weekends
Status: Normal / Event

Matrix Digital Output Schedule

Daily: Day / Night
Weekly: Weekdays / Weekends
Conditions: MD, sensor input

Configurable Recording Conditions

Recording speed: 1 to 30ips (NTSC)
/ 25 ips (PAL)
Image quality: 5 Levels
Event conditions: MD & sensor inputs

Pre / Post Alarm Recording

Pre Alarm Recording: 1 ~ 10 seconds
Post Alarm Recording: 1 ~ 60 seconds

Intelligent File System

Data-loss protection against power failure
Event Triggered Video Data Preservation

Event Log Recording

Log search & monitoring via OSD & Network

Data (Video & Audio Clip) Back-up

External HDD: IEEE1394 (FireWire) or USB
PrnP Memory Stick: USB port
VHS Video Tape: Video output port for VCR
Backup Notification: Daily / Weekly / Monthly

Data Copy (Max. 1 minute's video clip)

PrnP USB storage (Compact Flash,
Smart Media, Memory Stick, SD Card)

Displaying (OSD)

Transfer Rate on CCTV Monitor: Max. 120 ips
Transfer Rate on PC: Max. 60 ips
Display Channel: Auto Sequential
(1, 4, 9, 13, 16 split screens)
Play speed: 1x, 2x, 4x, 8x, 16x (FDW & REV)
Supports Step-Forward, Step-Reverse.
Instant data access based on time and
event log

Digital Zoom

2 times digital zoom (Live & Playback Mode)

Event Triggered Pop-up Video

Triggered by motion detection or sensor input

PTZ Control

Ports: RS232, RS485/RS422
Local User: Front panel push button & IR Remote
(controls IP video channels as well)
Remote User: On-the-screen PTZ control on PC
Preset: 8 points per channel
Group: 1 group per channel
'Return Home Position' support

Sensor Inputs and Alarm Outputs

Software-controlled 4 sensor inputs
Software-controlled 4 alarms outputs

Audio Recording and Playback

Input: 1Ch, line-in, 1Vpp
Output: 1Ch, line-out, 1Vpp
Level: -7 ~ 8 Recording level control
Support 20dB Amp. for low level audio recording
Support local and remote audio monitoring

Network

Protocol: TCP/IP, ARP, ICMP, DHCP, PPPoE
Line: 10/100Mbps Ethernet (RJ-45)

Simultaneous User Support over Network

Monitoring: Max. 5 users
Playback: Max. 5 users

Management and Firmware Upgrades

Firmware upgrades via Network

Security

Password (User or Administrator Authentication)
Watermarking (Against image forging)

Power Supply (included)

Input: AC 100~240V, 50~60 Hz
Output: DC 12V, 5A

Power Consumption

Booting: Max. DC 12V±10%, 4.5A (54W)
Normal: DC 12V ±10%, 2.9A (35W)

System Specifications with IP Video Inputs

Recording Performance (IP Video Ch.)

Max. 60 ips in total
Max. 5 ips per channel

Text Data Recording

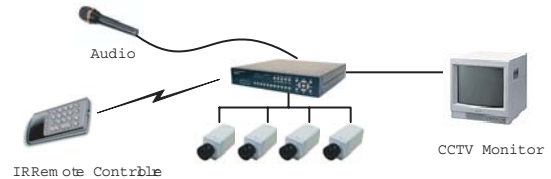
Access Control / POS / ATM transaction
information archived along with corresponding
video data

Displaying Performance (IP Video Ch.)

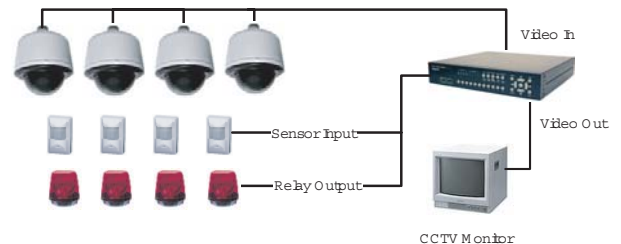
Live Transfer Rate on CCTV Monitor:
Max. 60ips (NTSC) / 50 ips (PAL)
Playback Transfer Rate on CCTV Monitor:
Max. 60ips (NTSC) / 50 ips (PAL)

System Configuration

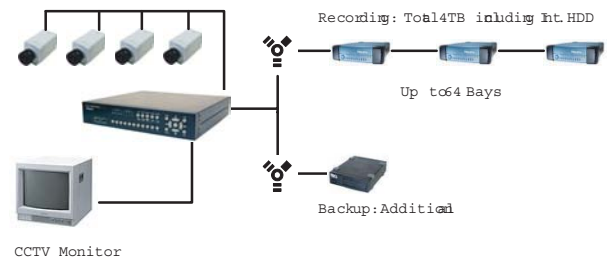
1. Basic Configuration



2. Expanded Configuration (with PTZ, Sensor, Relay)



3. HDD Expansion



4. Connecting Internet / Intranet



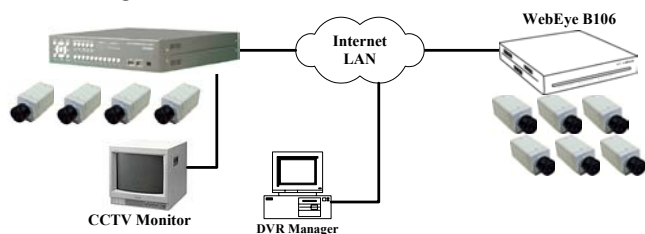
Configurations

“Recording Server Solution”

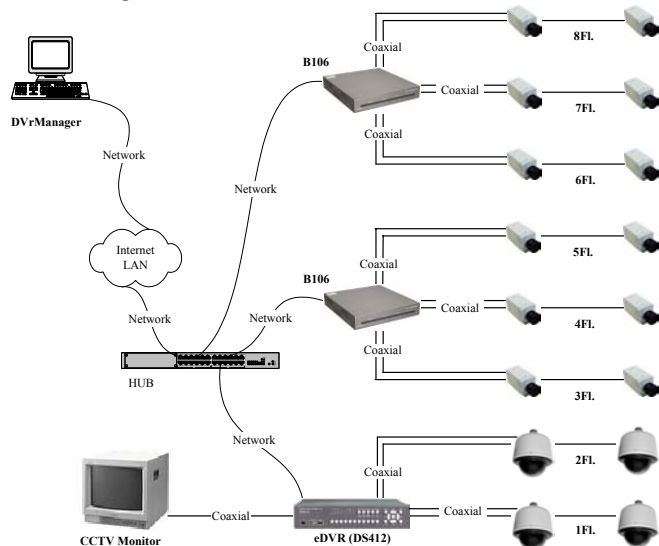
System Configuration for 4 Local Channels and External Network Channels (From 4Channel System to 16Channel System)

Analog Video Inputs	4	4	4	4	4	4	4	4	4	4	4	4	4
IP Video Inputs	0	1	2	3	4	5	6	7	8	9	10	11	12
Total Channel	4	5	6	7	8	9	10	11	12	13	14	15	16

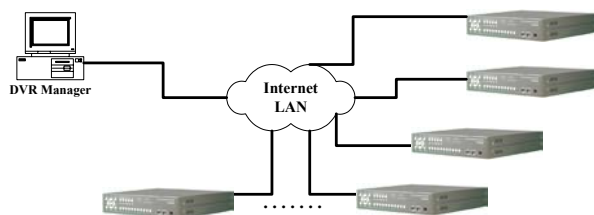
► 10Ch Configuration



► 16Ch Configuration



► Multi eDVR Monitoring with a PC (Expand up to 256Ch in a system)

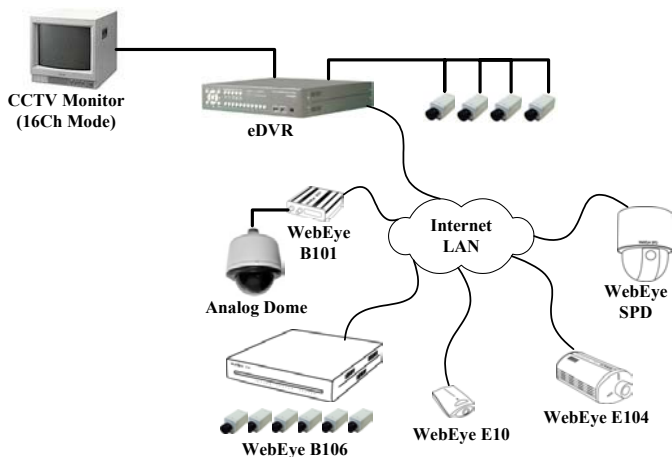


* DS412 will work with WebEye products that have a static IP address for now. (Dynamic IP support coming soon)

** For the network video channel, any combination is possible.

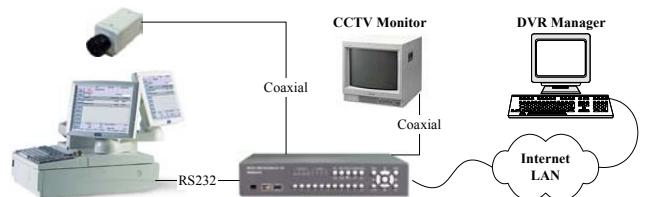
System Configuration for IP video monitoring with CCTV Monitor

- Monitoring IP video through CCTV monitor from remote place



System Configuration with POS

- Connecting POS with DS412 via serial cable (RS232)



- Connecting POS with DS412 over Network (LAN)

