

Utility Software

Product Code: W-SW201

Description: ActiveX Software Development Kit

The ActiveX Software Development Kit was created to assist developers and system integrators to build applications that make use of the Wavetrend Active RFID technology and is comprised of the following modules:

- W-Series ActiveX control W-RX200-SW-OCX
- ReaderNet Emulator W-RX200-SW-EMU
- ReaderNet Analyser W-RX200-SW-ANL
- Wavetrend Software Demo Application W-RX200-SW-DEMO
- Sample applications in Delphi, Visual Basic and Borland C++ that expose the functions the W-Series ActiveX control.

W-Series ActiveX control

The W-Series ActiveX control allows software developers and system integrators to interface with the L-RX200, L-RX201 and W-RX201 reader models on a Microsoft® Windows® Platform.

The file name of the ActiveX component is WTRReaderNet.ocx

Features

- Full command set for each type of reader included.
- Built on COM and OLE Automation technology.
- Event based component specific to Wavetrend hardware.
- Ease of use in integrating into other programming languages.
- Software component running on Microsoft Windows platforms.

ReaderNet Emulator

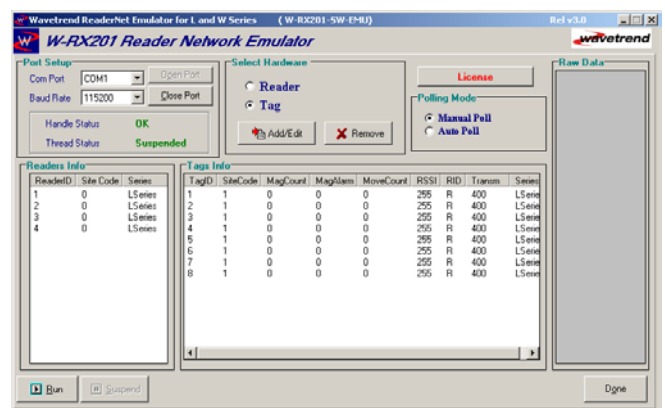
The W-RX200-SW-EMU ReaderNet Emulator is designed to provide a virtual reader network based on L-RX200, L-RX201 or W-RX201 readers.

Features

- Easy parameter setting of the Readers
- Configure real-time parameters of both L-Series and W-Series tags and readers.
- Individual configuration of the tag data with unique parameters to suit requirements of the user.
- Changing of tag parameters during runtime operation.

General note

- The W-Series ReaderNet Emulator requires a serial communications connection (cable or loop-back) connected to two different serial ports.
- The W-Series ReaderNet Emulator was designed to emulate the following hardware products:
 - L-RX200, L-RX201 or W-RX201
 - L-TG100, L-TG501, L-TG700, L-TG800, L-TG900 Tags
 - W-TG100, W-TG501, W-TG800 Tags

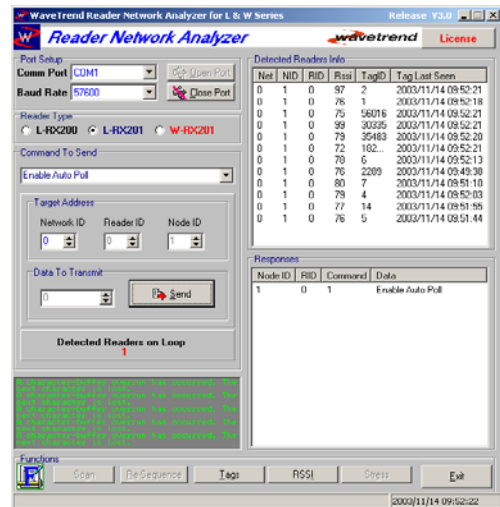


ReaderNet Analyser

The ReaderNet Analyser to analyse reader networks based on L-RX200, L-RX201 or W-RX201 Readers. This software also provides functionality to configure reader networks to suit requirements of the user.

Features

- Easy software installation procedure
- Easy reader network parameter configuration process
- Individual configuration of the L-RX200, L-RX201 or W-RX201 reader's Signal Strength Threshold (RSSI cut-off level)
- All other commands available for a particular reader model type can be selected from a drop-down list.
- Setting or changing the sequence of reader IDs in a reader network
- Stress-test reader network facility built into software
- Individual Tag data analyser built into software
- ReaderNet Stress Test functionality



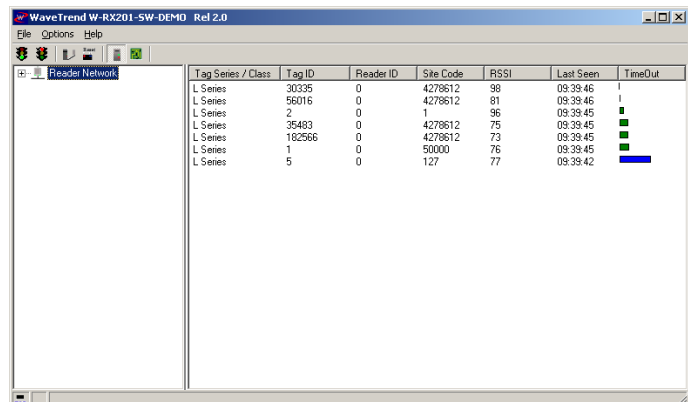
Wavetrend Software Demo Application

The Wavetrend Software Demo Application illustrates functionality of the W-RX201 ActiveX control (WTRReaderNet.ocx), which is the core of the W-Series SDK.

The Demo Application can be used to set-up, configure and demonstrate the functionality of Wavetrend L-RX200, L-RX201 and W-RX201 Readers.

Features

- RSSI cut-off level, gain mode and site code can be set for individual reader on the network.
- Port connections can be changed to specify the correct reader network.
- The baud rate of the readers on the baud rate can also be changed.
- Polling can either be done by Software (Auto), Manual or Hardware (Auto).
- Easy to use, clear indication of received data. Indicated sequence of events.



Microsoft® Windows® platforms supported:

- Microsoft® Windows® 98
- Microsoft® Windows NT®
- Microsoft® Windows® 2000
- Microsoft® Windows® XP

Wavetrend (Pty) Ltd.
Wavetrend House
Hammets Crossing Office Park
Selbourne Rd
Fourways
Johannesburg
South Africa
Tel +27(11)462-2633
Fax +27(11)462-6316



Wavetrend Inc.
13912 NE 31st Place
Bellevue
USA
Tel +1-206-949-6394

sales@wavetrend.net

Wavetrend UK Ltd.
1st Floor, 7 Mallard Court,
Mallard Way, Crewe Business Park, Crewe,
Cheshire
England
CW1 6ZQ
Tel +44-1270-214-433
Fax +44-1270-214-420

