



# SD8333-E

Speed Dome Network Camera

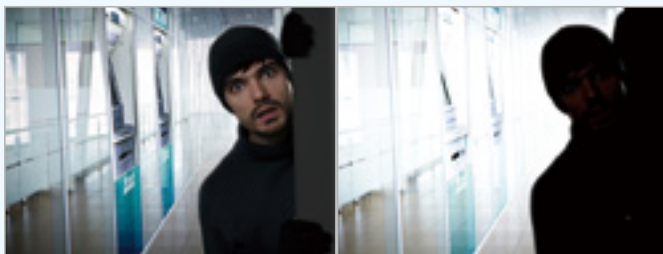
720p HD · 30x Zoom · NEMA 4X · IP66 · Defog · -40°C ~ 55°C · EIS · PoE Plus

VIVOTEK SD8333-E is part of the SUPREME series product line offering 720p HD resolution with superb image quality. Adopting a 30x optical zoom lens, the SD8333-E is able to capture details at top-notch quality. The IP66- and NEMA 4X-rated housing protects the camera body against rain, dust and corrosion within a wide temperature range between -40°C to 55°C. This feature ensures operation under extreme weather conditions and hazardous environments. It is especially suitable for monitoring wide open indoor/outdoor spaces such as airports, highways and parking lots where high-level reliability and precision are always required.

The SD8333-E supports high-performance H.264/MPEG-4/MJPEG compression technology and offers extra smooth video quality with resolution up to 60 fps @ 720p. Boasting WDR Pro technology, the SD8333-E can also cope with challenging lighting conditions and generate image quality close to the capabilities of the human eye. With a sophisticated pan/tilt mechanism, the camera provides fast, precise movement with continuous 360-degree pan and 220-degree tilt. Users can also easily control the lens position via a mouse or a joystick to track the object of interest and set up to 256 preset positions. With the built-in auto tracking feature, the SD8333-E provides instantaneous reaction to suspicious moving objects in wide area locations before operators are aware of activity.

## Key Features

- 720p HD CMOS Sensor
- 60 fps @ 720p HD
- 30x Zoom Lens
- Removable IR-cut Filter for Day & Night Function
- 360° Continuous Pan and 220° Tilt
- Real-time H.264, MPEG-4 and MJPEG Compression (Triple Codec)
- WDR Pro for Unparalleled Visibility in High Contrast Environments
- Weather-proof IP66-rated and NEMA4X Housing
- -40°C ~ 55°C Wide Temperature Range for Extreme Weather Conditions
- Audio Detection for Instant Alerts
- Auto Tracking for Moving Objects
- Built-in 802.3at Compliant PoE Plus
- 3D Privacy Masks for Additional Protection
- Built-in SD/SDHC/SDXC Card Slot for On-board Storage
- Defog



With WDR Pro

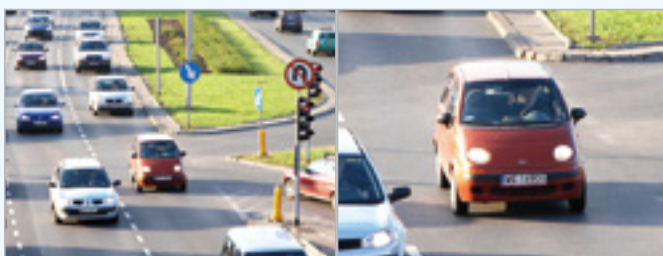
Without WDR Pro



Campus



Station



1x

30x



Airport



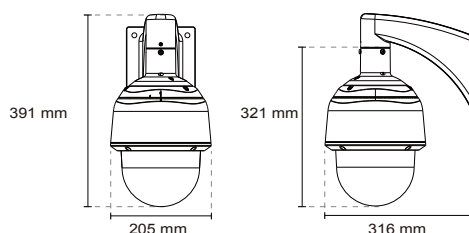
Port

## Technical Specifications

Model	SD8333-E SD8333-EM (With Electric Dehumidifier)
<b>System Information</b>	
CPU	Multimedia SoC (System-on-Chip)
Flash	128 MB
RAM	256 MB
<b>Camera Features</b>	
Image Sensor	1/3" Progressive CMOS
Maximum Resolution	1280x720
Lens Type	30x Optical Zoom, Auto Focus
Focal Length	f = 4.3~129 mm (30x zoom)
Aperture	F1.6 ~ F4.7
Auto-iris	DC-iris
Field of View	2.1' ~ 57.8' (Horizontal) 1.2' ~ 34.5' (Vertical) 2.4' ~ 67.3' (Diagonal)
Shutter Time	1 sec. to 1/10,000 sec.
WDR Technology	WDR Pro
Day/Night	Removable IR-cut filter for day & night function
Minimum Illumination	0.15 Lux @ F1.6 (Color) 0.0048 Lux @ F1.6 (B/W)
Pan Speed	0.05' ~ 450' / sec
Pan Range	360 endless
Tilt Speed	0.05' ~ 450' / sec
Tilt Range	220' (-110' ~ +110')
Preset Locations	256 preset locations, 40 presets per tour
Pan/tilt/zoom Functionalities	48x digital zoom (4x on IE plug-in, 12x built-in) Auto pan mode Auto patrol mode
On-board Storage	SD/SDHC/SDXC card slot
<b>Video</b>	
Compression	H.264, MJPEG & MPEG-4
Maximum Frame Rate	H.264: 60 fps @ 1280x720 MPEG-4: 60 fps @ 1280x720 MJPEG: 60 fps @ 1280x720 (Up to 30 fps in WDR mode)
Maximum Streams	4 simultaneous streams
S/N Ratio	Above 50 dB
Dynamic Range	110 dB
Video Streaming	Adjustable resolution, quality and bitrate Zoom enhancement for better image quality under limited bandwidth
Image Settings	Adjustable image size, quality and bit rate Time stamp, text overlay, flip & mirror Configurable brightness, contrast, saturation, sharpness, white balance, exposure control, gain, backlight compensation, privacy masks (Up to 24) Scheduled profile settings Defog
<b>Audio</b>	
Audio Capability	Audio input/output (full duplex)
Compression	AAC, G.711, G.726
Interface	External microphone input External line output
<b>Network</b>	
Users	Live viewing for up to 10 clients
Protocols	IPv4, IPv6, TCP/IP, HTTP, HTTPS, UPnP, RTSP/RTP/RTCP, IGMP, SMTP, FTP, DHCP, NTP, DNS, DDNS, PPPoE, CoS, QoS, SNMP, 802.1X
Interface	10Base-T/100 BaseTX Ethernet (RJ-45)

ONVIF	Supported, specification available at <a href="http://www.onvif.org">www.onvif.org</a>
<b>Intelligent Video</b>	
Video Motion Detection	Triple-window video motion detection
Auto-Tracking	Auto-tracking on moving object
<b>Alarm and Event</b>	
Alarm Triggers	Video motion detection, manual trigger, periodical trigger, system boot, recording notification, camera tampering detection, audio detection
Alarm Events	Event notification using digital output, HTTP, SMTP, FTP and NAS server File upload via HTTP, SMTP, FTP and NAS server
<b>General</b>	
Connectors	RJ-45 cable connector for Network/PoE connection Audio input Audio output AC 24V power input Digital input*4 Digital output*2 RS-485 for PTZ control (PelcoD protocol, Baud rate 2400)
LED Indicator	System power and status indicator
Power Input	PoE plus (IEEE 802.3at compliant) High Power PoE AC 24V
Power Consumption	PoE plus: Max. 19W AC 24V: Max. 48W (heater on) Max. 19W (heater off) High Power PoE: Max. 48W (heater on) Max. 19W (heater off)
Dimensions	Ø: 205 mm x 321 mm
Weight	Net: 3974 g
Casing	Weather-proof IP66- and NEMA 4X-rated mated housing Built-in electrical dehumidifier device (SD8333-EM)
Safety Certifications	CE, FCC Class A, VCCI, C-Tick, NEMA 4X
Operating Temperature	-5°C ~ 55°C (PoE Plus) -40°C ~ 55°C (AC 24V) -40°C ~ 55°C (High Power PoE)
Warranty	36 months
<b>System Requirements</b>	
Operating System	Microsoft Windows 7/Vista/XP/2000
Web Browser	Mozilla Firefox 7~10 (Streaming only) Internet Explorer 9.x or 10.x
Other Players	VLC: 1.1.11 or above Quicktime: 7 or above
<b>Included Accessories</b>	
CD	User's manual, quick installation guide, Installation Wizard 2, ST7501 32-channel recording software
Others	Wall mount bracket, screws, waterproof connectors, terminal blocks, quick installation guide, warranty card, alignment sticker, ground wire, T25 stardriver, software CD, desiccant bag

## Dimensions



## Compatible Accessories

### Mounting Kits



**AM-118**  
Indoor pendant head



**AM-103**  
Recessed kit



**AM-519**  
1.5" PT adapter

### Power Adapter



**AA-341**  
AC 24V Power Adapter

### Others



**AC-212/AC-111**  
Smoked cover/  
Vandal proof  
transparent cover



**AO-001**  
Combo cable

All specifications are subject to change without notice. Copyright © VIVOTEK INC. All rights reserved.

Distributed by:



**VIVOTEK INC.**  
6F, No.192, Lien-Cheng Rd., Chung-Ho,  
New Taipei City, 235, Taiwan, R.O.C.  
T: +886-2-82455282 F: +886-2-82455532  
E: sales@vivotek.com

**VIVOTEK USA**  
2050 Ringwood Avenue,  
San Jose, CA 95131  
T: 408-773-8686 F: 408-773-8298  
E: salesusa@vivotek.com

**VIVOTEK Europe**  
Randstad 22-133, 1316BW Almere,  
The Netherlands  
T: +31(0)36-5298-434  
E: sales@vivotek.com

Ver. 5