

## Technical Specifications

<b>System</b> <ul style="list-style-type: none"> <li>CPU: Multimedia SoC</li> <li>Flash: 16MB</li> <li>RAM: 256MB</li> <li>Embedded OS: Linux 2.6</li> </ul>	<b>Networking</b> <ul style="list-style-type: none"> <li>10/100 Mbps Ethernet, RJ-45</li> <li>Onvif support</li> <li>Protocols: IPv4, IPv6, TCP/IP, HTTP, HTTPS, UPnP, RTSP/RTP/RTCP, IGMP, SMTP, FTP, DHCP, TP, DNS, DDNS, PPPoE, CoS, QoS, SNMP, and 802.1X</li> </ul>
<b>Lens</b> <ul style="list-style-type: none"> <li>Board lens, vari-focal, f = 3 ~ 9 mm, F1.2 (wide), F2.1 (tele), auto-iris</li> <li>Removable IR-cut filter for day &amp; night function</li> </ul>	<b>Alarm and Event Management</b> <ul style="list-style-type: none"> <li>Triple-window video motion detection</li> <li>Tamper detection</li> <li>One D/I and one D/O for external sensor and alarm</li> <li>PIR (Passive Infrared Sensor) for human detection</li> <li>Event notification using HTTP, SMTP or FTP</li> <li>Local recording of MP4 file</li> </ul>
<b>Angle of View</b> <ul style="list-style-type: none"> <li>31.7° ~ 93.0° (horizontal)</li> <li>23.8° ~ 68.4° (vertical)</li> <li>39.6° ~ 118.9° (diagonal)</li> </ul>	<b>On-board Storage</b> <ul style="list-style-type: none"> <li>MicroSD/SDHC card slot</li> <li>Stores snapshots and video clips</li> <li><i>*Note: No MicroSD/SDHC card slot &amp; local storage function for Argentina.</i></li> </ul>
<b>Shutter Time</b> <ul style="list-style-type: none"> <li>1/5 sec. to 1/32,000 sec.</li> </ul>	<b>Security</b> <ul style="list-style-type: none"> <li>Multi-level user access with password protection</li> <li>IP address filtering</li> <li>HTTPS encrypted data transmission</li> <li>802.1X port-based authentication for network protection</li> </ul>
<b>Image Sensor</b> <ul style="list-style-type: none"> <li>1/2.7" progressive scan CMOS sensor in 1920x1080 resolution</li> </ul>	<b>Users</b> <ul style="list-style-type: none"> <li>Live viewing for up to 10 clients</li> </ul>
<b>Minimum Illumination</b> <ul style="list-style-type: none"> <li>0.08 Lux @ F1.2 (Color)</li> <li>0.001 Lux @ F1.2 (B/W)</li> </ul>	<b>Weight</b> <ul style="list-style-type: none"> <li>Net: 765 g</li> </ul>
<b>IR Illuminators</b> <ul style="list-style-type: none"> <li>Built-in IR illuminators, effective up to 15 meters</li> <li>IR LED*18</li> </ul>	<b>LED Indicator</b> <ul style="list-style-type: none"> <li>System power and status indicator</li> </ul>
<b>Video</b> <ul style="list-style-type: none"> <li>Compression: H.264, MJPEG &amp; MPEG-4</li> <li>Streaming: <ul style="list-style-type: none"> <li>Multiple simultaneous streams</li> <li>H.264 streaming over UDP, TCP, HTTP or HTTPS</li> <li>MPEG-4 streaming over UDP, TCP, HTTP or HTTPS</li> <li>H.264/MPEG-4 multicast streaming</li> <li>MJPEG streaming over HTTP or HTTPS</li> </ul> </li> <li>Supports activity adaptive streaming for dynamic frame rate control</li> <li>Supports video cropping for bandwidth saving</li> <li>Supports ePTZ for data efficiency</li> <li>Supports 3GPP mobile surveillance</li> <li>Frame rates: <ul style="list-style-type: none"> <li>H.264: Up to 30 fps at 1920x1080</li> <li>MPEG-4: Up to 30 fps at 1920x1080</li> <li>MJPEG: Up to 30 fps at 1920x1080</li> </ul> </li> <li>Interface: <ul style="list-style-type: none"> <li>Audio/Video output</li> <li>NTSC/PAL video output switch</li> <li>Focus assist button</li> </ul> </li> </ul>	<b>Power</b> <ul style="list-style-type: none"> <li>12V DC</li> <li>24V AC</li> <li>Power consumption: Max. 5.3 W</li> <li>802.3af compliant Power-over-Ethernet (Class 3)</li> </ul>
<b>Image Settings</b> <ul style="list-style-type: none"> <li>Adjustable image size, quality and bit rate</li> <li>Time stamp and text caption overlay</li> <li>Flip &amp; mirror</li> <li>Configurable brightness, contrast, saturation, sharpness, white balance and exposure</li> <li>AGC, AWB, AES</li> <li>WDR enhanced</li> <li>Automatic, manual or scheduled day/night mode</li> <li>BLC (Backlight Compensation)</li> <li>Supports privacy masks</li> </ul>	<b>Approvals</b> <ul style="list-style-type: none"> <li>CE, LVD, FCC, VCCI, C-Tick, UL</li> </ul>
<b>Audio</b> <ul style="list-style-type: none"> <li>Compression: <ul style="list-style-type: none"> <li>GSM-AMR speech encoding, bit rate: 4.75 kbps to 12.2 kbps</li> <li>MPEG-4 AAC audio encoding, bit rate: 16 kbps to 128 kbps</li> <li>G.711 audio encoding, bit rate: 64 kbps, μ-Law or A-Law mode selectable</li> </ul> </li> <li>Interface: <ul style="list-style-type: none"> <li>Built-in microphone</li> <li>External microphone input</li> <li>Audio output</li> <li>External/Internal microphone switch</li> </ul> </li> <li>Supports two-way audio</li> <li>Supports audio mute</li> </ul>	<b>Operating Environments</b> <ul style="list-style-type: none"> <li>Temperature: 0°C ~ 50°C (32°F ~ 122°F)</li> <li>Humidity: 90% RH</li> </ul>
	<b>Viewing System Requirements</b> <ul style="list-style-type: none"> <li>OS: Microsoft Windows 7/Vista/XP/2000</li> <li>Browser: Mozilla Firefox, Internet Explorer 6.x or above</li> <li>Cell phone: 3GPP player</li> <li>Real Player: 10.5 or above</li> <li>Quick Time: 6.5 or above</li> </ul>
	<b>Installation, Management, and Maintenance</b> <ul style="list-style-type: none"> <li>Hassle-free Installation</li> <li>Camera angle adjustment: pan 350°, tilt 65°, rotate 350°</li> <li>Installation Wizard 2</li> <li>32-CH ST7501 recording software</li> <li>Supports firmware upgrade</li> </ul>
	<b>Applications</b> <ul style="list-style-type: none"> <li>SDK available for application development and system integration</li> </ul>
	<b>Warranty</b> <ul style="list-style-type: none"> <li>36 months</li> </ul>
	<b>Dimension</b> <ul style="list-style-type: none"> <li>Ø 157 mm x 110 mm</li> </ul> 

All specifications are subject to change without notice. Copyright © 2011 VIVOTEK INC. All rights reserved. P/N: 971004700

**SUPREME**  
A NEW DEFINITION OF HD



# Fixed Dome Network Camera FD8162

2MP • PIR • Focus Assist • Hassle-free Installation • WDR Enhanced



VIVOTEK FD8162 is an easy-to-use fixed dome network camera, featuring 2-Megapixel or 1080p Full HD resolution with superb image quality up to 30 fps. As a true day/night camera, the FD8162 features a removable IR-cut filter, maintaining clear images 24 hours a day. With WDR enhancement, users can identify image details in extremely bright or dark environments. It is especially suitable for monitoring wide open indoor environments such as building entrances, airports or applications requiring accurate identification.

With high-performance H.264/MPEG-4/MJPEG compression technology, the FD8162 offers extra-smooth HD video quality. For installers, properly adjusting the focus of a megapixel network camera can be difficult due to the image detail. To resolve this, the FD8162 is equipped with a focus assist button to allow users to precisely adjust the camera focus. Furthermore, the unique design of the four-step mount facilitates easy usage of the FD8162, offering more flexible, hassle-free installation and maintenance.

Together with a PIR sensor for thermal detection, 802.3af compliant PoE, tamper detection, MicroSD/SDHC card for on-board storage\*, video cropping and e-PTZ functionality, the FD8162 is indisputably the top choice for reliable and high performance surveillance.

\* No MicroSD/SDHC card slot & local storage function for Argentina.



VIVOTEK INC.  
6F, No.192, Lien-Cheng Rd., Chung-Ho, New Taipei City, 235, Taiwan, R.O.C.  
| T: +886-2-82455282 | F: +886-2-82455532 | E: sales@vivotek.com

VIVOTEK USA, INC.  
2050 Ringwood Avenue, San Jose, CA 95131  
| T: 408-773-8686 | F: 408-773-8298 | E: salesusa@vivotek.com

Ver 1.1

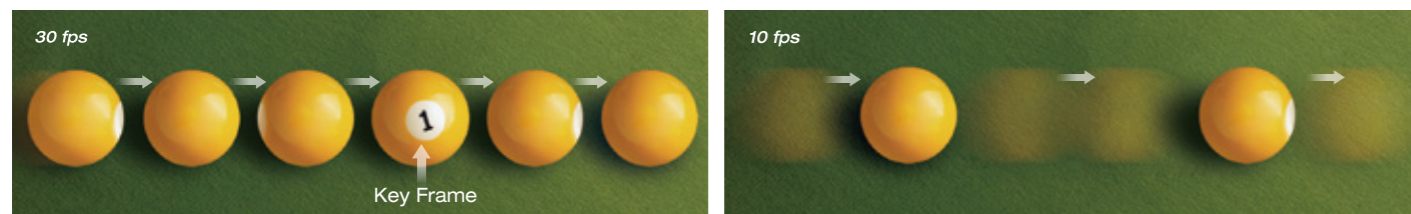


## 1080p Resolution at Full Frame Rate

The VIVOTEK FD8162 is able to transmit 30 fps @ 1080p with H.264 compression, while conventional megapixel cameras generally only achieve 10 to 15 fps due to hardware limitations. The ability to view and record footage at a full frame rate enables much more effective surveillance.

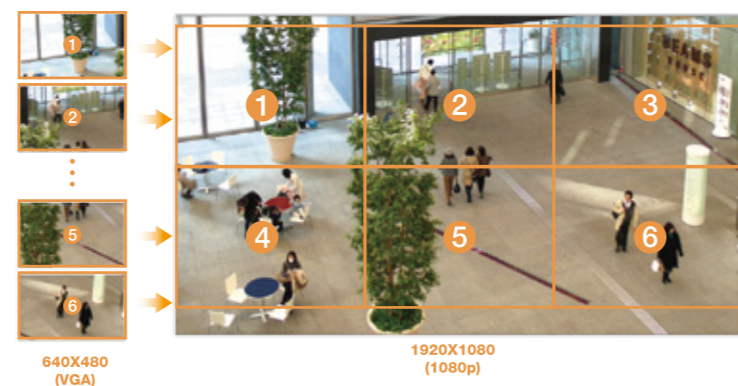


For example, if a person or object of interest passes quickly through the camera's field of view during an event, a 10 fps frame rate might mean only a single frame with the target is captured, while the FD8162 would capture three frames, providing a fuller record of the event and more reliable identification of the target.



## Wide Coverage, Exceptional Details

Compatible with the HDTV (16:9) standard, the FD8162 provides surveillance coverage for an area up to six times larger than possible with a VGA camera, significantly reducing the number of cameras required. The FD8162 is especially well suited to monitor broad spaces such as shopping mall, airport, and hotel lobby, etc. In addition, it is excellent for applications requiring accurate recognition for post-content analysis, such as the identification of people or license plates.



## Consistent Surveillance Performance

### Adapted for High-contrast Lighting Conditions

When a camera is used in a high contrast, backlight, glare, or light reflective environment such as a building entrance, ATM, or window, a subject may appear dark and unrecognizable. WDR Enhanced technology compensates for the unbalanced lighting, restoring detail throughout the field of view, so as to give user unparalleled visibility to identify images.



With WDR Enhanced



Without WDR Enhanced

### Clear Images 24/7

The FD8162 delivers day & night functionality with a built-in removable IR-cut filter. By day, the IR-cut filter screens out infrared light to reduce color distortion, and at night, the filter is removed to accept infrared light for higher lighting efficiency. Additionally, the built-in IR illuminators effective up to 15 meters provide increased light sensitivity at night, enabling the FD8162 to be used in total darkness.



Day

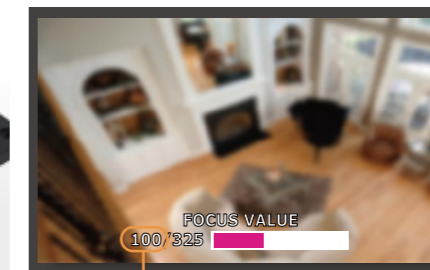
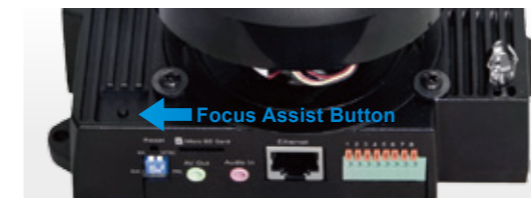


Night

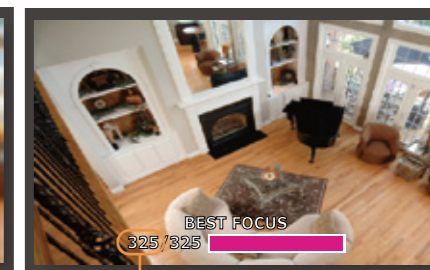
## Flexible, Hassle-free Installation and Maintenance

### Focus Assist Button

- Easy installation
- Accurate focus adjustment

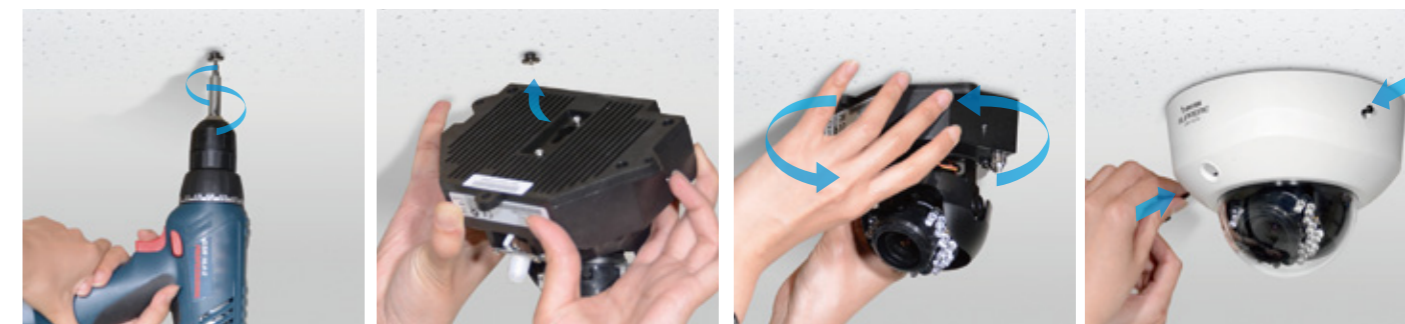


Current Focus Value



The Best Focus Value

### Easy Installation in Four Steps



## PIR Thermal Detection

The FD8162 is equipped with a PIR sensor that detects moving objects by their thermal characteristics. When unauthorized access is detected, the sensor will send out notifications and trigger the alarm, thereby guaranteeing a higher level of security and peace of mind.



# FD8162 Fixed Dome Network Camera

2MP • PIR • Focus Assist • Hassle-free Installation • WDR Enhanced

- 2-Megapixel CMOS Sensor
- Up to 30 fps @ 1080p Full HD
- Removable IR-cut Filter for Day & Night Function
- Built-in IR Illuminators, Effective up to 15 Meters
- Real-time H.264, MPEG-4 and MJPEG Compression (Triple Codec)
- Built-in PIR Sensor for Thermal Detection
- WDR Enhancement for Unparalleled Visibility in Extremely Bright or Dark Environments
- Built-in Focus Assist Button for Precise Focus Adjustment
- Hassle-free Installation
- Built-in 802.3af Compliant PoE
- Built-in MicroSD/SDHC Card Slot for On-board Storage\*



\* No MicroSD/SDHC card slot & local storage function for Argentina.