



AW-GEV Web Smart Series

VivoCam Web Smart Managed PoE Switch



Network Topology View · Web Smart Managed Gigabit PoE Switch

The AW-GEV Web Smart series is a VivoCam web smart managed PoE switch, combining powerful web smart managed features with graphic view functions, providing better functionality and usability. With single AW-GEV Web Smart series allows users to find all network devices and deploy a network system automatically. The AW-GEV Web Smart series also provides high performance HW and environmental flexibility for SMBs and Enterprises. In addition, embedded NetworkView features Graphic Views, such as Topology View/Floor View/Map View for controlling and understanding

network structure and device status, as well as Google Map integration to view system status for outdoor applications. The device status and traffic monitoring functions also help users clarify and troubleshoot any connection or device issues. The AW-GEV Web Smart series is ideal for delivering management simplicity, better user experience, and lowering total cost of ownership.

Key Features

Displaying Network Topology

- Auto Discovery and Classification of Network Devices
- Auto Generated Network Topology View
- Easy VLAN Setup on Topology View
- Support Floor View and Google Map
- Diagnose PoE Device Status
- Network Device Traffic Monitoring

Web Smart Managed PoE Switch

- DHCP Server & Client & Relay & Snooping
- Tag-Based VLAN, Port-Based VLAN, Protocol -Based VLAN, IP Subnet-Based VLAN, MAC-Based VLAN
- Private VLAN Edge (PVE), Voice VLAN, Q-in-Q VLAN, GARP VLAN
- Multicast VLAN Registration (MVR)
- 802.1d (STP), 802.1w (RSTP) and 802.1s (MSTP) & Loop Protection
- LACP IEEE 802.3ad and Static Link Aggregation
- IGMP Snooping v1/v2 snooping & Querier & Proxy
- IEEE 802.1X RADIUS Authentication & IGMP-RADIUS based
- SNMP v1/v2c/v3 User-Based Security Model (USM)
- IEEE802.3az Energy-Efficient Ethernet
- MAC Address Auto-Learning and Auto-Aging

Feature Highlight

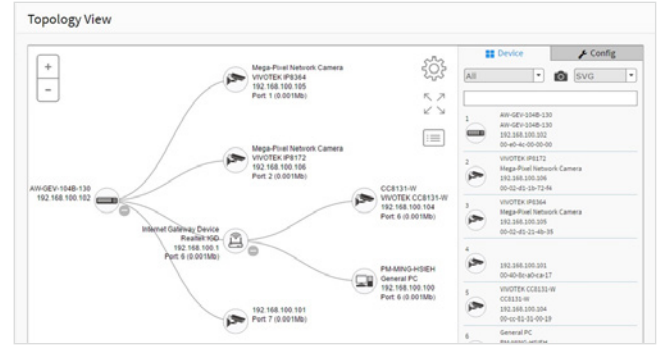
Auto Discovery

The AW-GEV Web Smart series can automatically discover VIVOTEK's devices such as network cameras, video servers and NVR's with a simple click of the mouse.

Remove	Status	Device Type	Model Name	Device Name	MAC	IP Address
	Online	IP Cam	VIVOTEK FD4166	Mega Pixel Network Camera	00-00-00-25-24-42	192.168.48.133
	Online	IP Cam	VIVOTEK IP6335H	Mega Pixel Network Camera	00-00-00-25-33-E7	192.168.48.125
	Online	IP Cam	VIVOTEK IP6372P	Mega Pixel Network Camera	00-00-00-25-43-A5	192.168.48.89
	Online	IP Cam	VIVOTEK FD4335H	Mega Pixel Network Camera	00-00-00-25-4A-15	192.168.48.89
	Online	IP Cam	VIVOTEK IP6372	Mega Pixel Network Camera	00-00-00-25-4D-F1	192.168.48.70
	Online	IP Cam	VIVOTEK F4333	Mega Pixel Network Camera	00-00-00-25-56-A4	192.168.48.157
	Online	IP Cam	VIVOTEK IP6337H	IP6337H-C	00-00-00-25-5A-85	192.168.48.154
	Online	IP Cam	VIVOTEK IP6332	Mega Pixel Network Camera	00-00-00-26-91-68	192.168.48.133
	Online	IP Cam	VIVOTEK IP6373H	Mega Pixel Network Camera	00-00-00-26-97-05	192.168.48.24
	Online	IP Cam	VIVOTEK IP6335H	Mega Pixel Network Camera	00-00-00-26-A1-90	192.168.48.107

Topology View

Auto-generated Topology View allows administrators to quickly view and export a complete network topology in SVG/PNG/PDF format for easier inspection and planning.



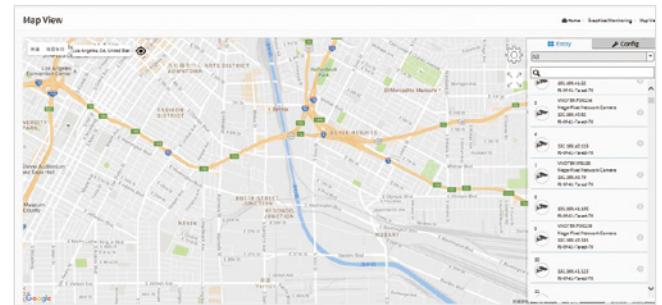
Floor View

Upload custom floor images. Floor View allows for quick locations of deployed surveillance devices and for export of this view in SVG/PNG/PDF format for easier inspection and planning.



Google Map

Locate surveillance devices on Google map to simplify multi-site management of any large scale deployments.



Traffic Monitoring Chart

Auto-generated comprehensive chart to show port-by-port network traffic status.

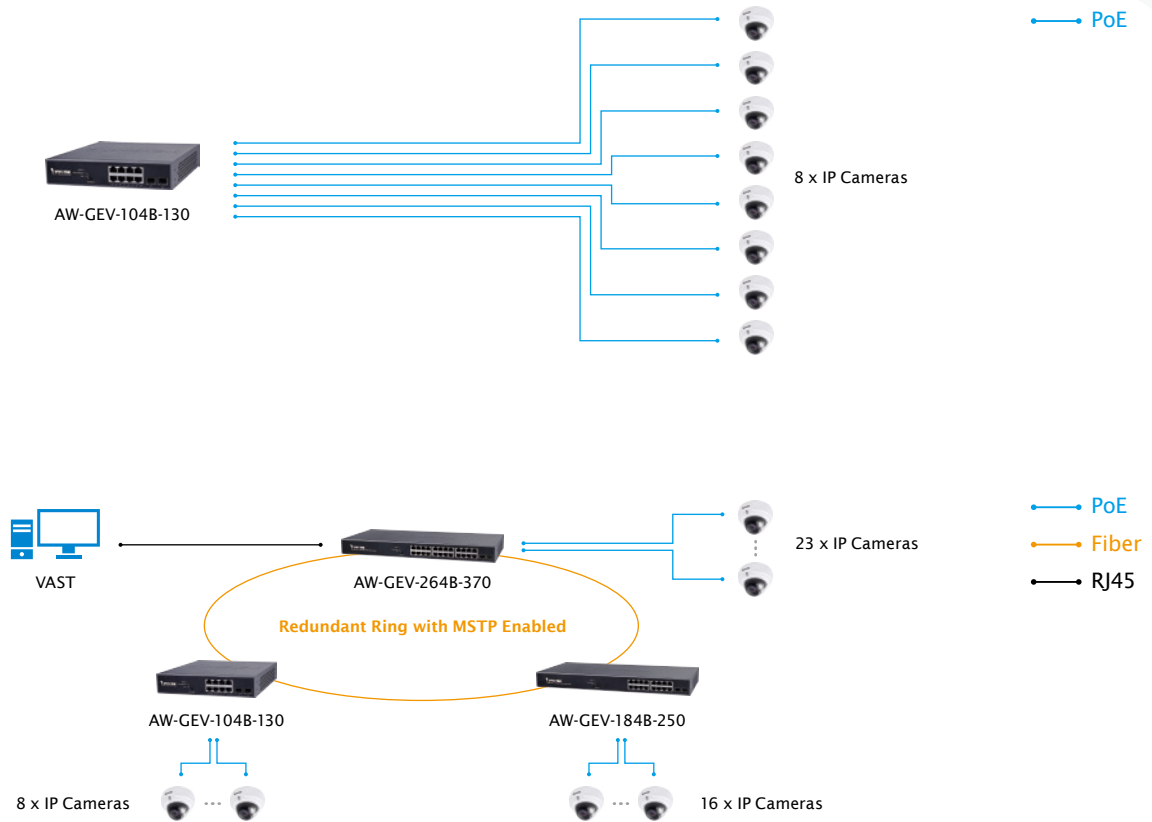
VLAN Setting

Hierarchical topology view allows administrators to easily build a VLAN

Device Status

Device Status page to show the real-time verification result of each connection between switch port and surveillance device.

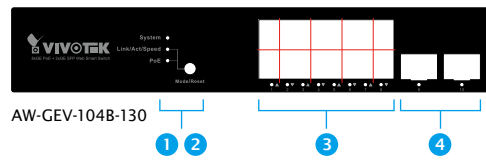
Application



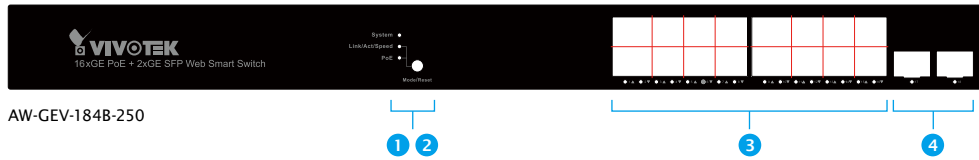
Ordering Information

Model Name	Product Description
Web Smart PoE Switch	
AW-GEV-104B-130	8xGE PoE + 2xGE SFP VivoCam Web Smart Managed Switch, PoE Power Budget 130W
AW-GEV-184B-250	16xGE PoE + 2xGE SFP VivoCam Web Smart Managed Switch, PoE Power Budget 250W
AW-GEV-264B-370	24xGE PoE + 2xGE SFP VivoCam Web Smart Managed Switch, PoE Power Budget 370W
SFP Tranceiver	
SFP-1000-MM85-X5	1.25G, MMF, 0.5km
SFP-1000-MM13-02	1.25G, MMF, 2km
SFP-1000-SM13-10	1.25G, SMF, 10km
SFP-1000-SM13-40	1.25G, SMF, 40km
SFP-1000-CPTX-X1	1G SFP to RJ45
IP Surveillance Device	
Network Camera	VIVOTEK Network Cameras
Video Server	VIVOTEK Video Servers
NVR	VIVOTEK NVRs
CMS	VAST

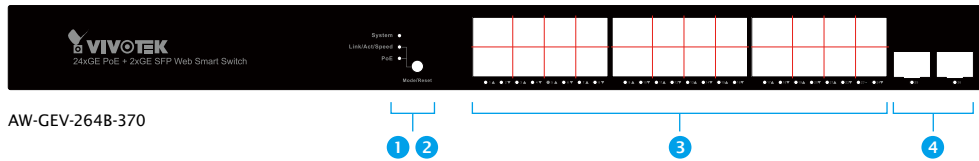
Front View



- 1 LED Indicators
- 2 Mode Selector & Reset Button
- 3 PoE RJ45 Gigabit Ethernet Port x8
- 4 Gigabit SFP Port x2



- 1 LED Indicators
- 2 Mode Selector & Reset Button
- 3 PoE RJ45 Gigabit Ethernet Port x16
- 4 Gigabit SFP Port x2



- 1 LED Indicators
- 2 Mode Selector & Reset Button
- 3 PoE RJ45 Gigabit Ethernet Port x24
- 4 Gigabit SFP Port x2

Technical Specifications

Model	AW-GEV-104B-130	AW-GEV-184B-250	AW-GEV-264B-370
Product Description	8xGE PoE + 2xGE SFP VivoCam Web Smart Managed PoE Switch	16xGE PoE + 2xGE SFP VivoCam Web Smart Managed PoE Switch	24xGE PoE + 2xGE SFP VivoCam Web Smart Managed PoE Switch
Port Configuration			
10M/100M/1G RJ45 Port	8	16	24
100M/1G SFP Port	2	2	2
Total Ports	10	18	26
HW Performance			
Switching Bandwidth	20Gbps	36Gbps	52Gbps
Buffer Memory	4.1Mb	4.1Mb	4.1Mb
MAC Address	8K	8K	8K
Jumbo Frames	9216 Bytes	9216 Bytes	9216 Bytes
NetworkView Features			
Topology View	V	V	V
Floor View	V	V	V
Google Map View	V	V	V
Auto Search Network Device	V	V	V
Network Device List	V	V	V
Find My Switch	V	V	V
DHCP Server Config	V	V	V
Device Grouping Setting for VLAN	V	V	V
Device Name Edit	V	V	V
PoE Device Status	V	V	V
PoE On/Off Control	V	V	V
Traffic Monitoring	V	V	V
Web Smart Managed Features			
Spanning Tree	IEEE802.1D (STP)	V	V
	IEEE802.1w (RSTP)	V	V
	IEEE802.1s (MSTP)	V	V

Technical Specifications

Model		AW-GEV-104B-130	AW-GEV-184B-250	AW-GEV-264B-370
Product Description		8xGE PoE + 2xGE SFP VivoCam Web Smart Managed PoE Switch	16xGE PoE + 2xGE SFP VivoCam Web Smart Managed PoE Switch	24xGE PoE + 2xGE SFP VivoCam Web Smart Managed PoE Switch
Trunking	IEEE802.1d (LACP)	V	V	V
	Static Aggregation	V	V	V
VLAN	802.1Q Tag-based VLAN	4096 VLAN IDs	4096 VLAN IDs	4096 VLAN IDs
	Port-based VLAN	V	V	V
	Private VLAN Edge (PVE)	V	V	V
	GARP VLAN	V	V	V
	Q-in-Q (Double Tag)	V	V	V
	Protocol-based VLAN	V	V	V
	MAC-based VLAN	V	V	V
	Voice VLAN	V	V	V
	IP Subnet-based VLAN	V	V	V
	Multicast VLAN Registration (MVR)	V	V	V
	IGMP Snooping (v1/v2)	V	V	V
	DHCP Relay	V	V	V
MLD v1/v2 Snooping	V	V	V	
QoS Features				
Hardware Queues		8	8	8
Classification	Port Based	V	V	V
	802.1p	V	V	V
Rate Limiting	Ingress	V	V	V
	Egress	V	V	V
	Per Port	V	V	V
Priority Queue Scheduling	WRR	V	V	V
	DSCP & Class of Service	V	V	V
Security				
IEEE802.1x	RADIUS Authentication	V	V	V
	IGMP-RADIUS Based	V	V	V
Secure Sockets Layer (SSL)		V	V	V
Port Security		V	V	V
IP Source Guard		V	V	V
Storm Control		V	V	V
Layer 2 Isolation Private VLAN Edge (PVE)		V	V	V
RADIUS/TACACS+		V	V	V
Loop Detection		V	V	V
DHCP Snooping		V	V	V
Management				
SNMP (v1, v2c, v3)		V	V	V
RMON (1,2,3 & 9 groups)		V	V	V
DHCP Server & Client		V	V	V
Port Mirroring		V	V	V
UPnP		V	V	V
LLDP (IEEE802.1ab)		V	V	V
LLDP-MED		V	V	V
S-Flow		V	V	V
Firmware Upgrade		V	V	V

Technical Specifications

Model	AW-GEV-104B-130	AW-GEV-184B-250	AW-GEV-264B-370
Product Description	8xGE PoE + 2xGE SFP VivoCam Web Smart Managed PoE Switch	16xGE PoE + 2xGE SFP VivoCam Web Smart Managed PoE Switch	24xGE PoE + 2xGE SFP VivoCam Web Smart Managed PoE Switch
NTP	V	V	V
PoE Management			
PoE On/Off Control	V	V	V
PoE Alive Checking for PD	V	V	V
PoE Scheduling	V	V	V
Power Delay	V	V	V
PoE Function			
IEEE 802.3af/at PoE Standard Compliant	V	V	V
Number of PoE Output Port	8	16	24
PoE output Power	Per Port 54VDC, Max. 30W	Per Port 54VDC, Max. 30W	Per Port 54VDC, Max. 30W
Total PoE Power Budget	130W	250W	370W
PoE Pin Assignment	1/2(+), 3/6(-)	1/2(+), 3/6(-)	1/2(+), 3/6(-)
Environmental Specifications			
Operating Temperature	0°C ~ 50°C (32°F ~ 122°F)	0°C ~ 50°C (32°F ~ 122°F)	0°C ~ 50°C (32°F ~ 122°F)
Storage Temperature	-20°C ~ 70°C (-4°F ~ 158°F)	-20°C ~ 70°C (-4°F ~ 158°F)	-20°C ~ 70°C (-4°F ~ 158°F)
Operating Humidity	10 ~ 90% RH	10 ~ 90% RH	10 ~ 90% RH
Mechanical Specifications			
Dimensions	220 (W) x 44 (H) x 242 (D) mm	442 (W) x 44 (H) x 211(D) mm	442 (W) x 44 (H) x 211(D) mm
Weight	1.95 kg	3 kg	3.1 kg
Power Source			
AC Input	100V ~ 240V	100V ~ 240V	100V ~ 240V
Frequency	50 ~ 60 Hz	50 ~ 60 Hz	50 ~ 60 Hz
Certifications			
Certifications	CE, FCC, LVD, VCCI, C-Tick	CE, FCC, LVD, VCCI, C-Tick	CE, FCC, LVD, VCCI, C-Tick
Accessories			
Included Accessories	Power Cord, QIG, CD Manual, Rack Mount Kit	Power Cord, QIG, CD Manual, Rack Mount Kit	Power Cord, QIG, CD Manual, Rack Mount Kit
Dimensions			

