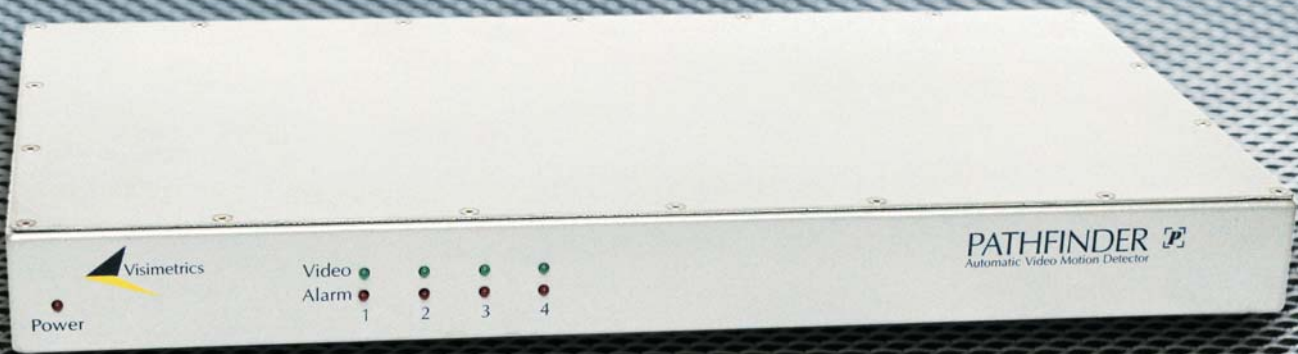


PATHFINDER

4 Channel
Video Motion Detector

Video Motion Detector



- Fully-automatic motion detection system
- Insensitive to environmental changes
- No set-up or adjustment required
- Integrated 4:1 video switcher
- Blank screen option
- Zone masking if required
- 4 Alarm relay outputs

Pathfinder is an intelligent video motion sensor system for CCTV installations, providing reliable detection of people and vehicles moving within camera scenes. Unlike traditional video motion detectors with their complex set-up procedures, Pathfinder simply requires the cameras to be connected to complete the installation. **Pathfinder** automatically ignores most environmental movement such as moving foliage backgrounds and lighting changes caused by rain and clouds.

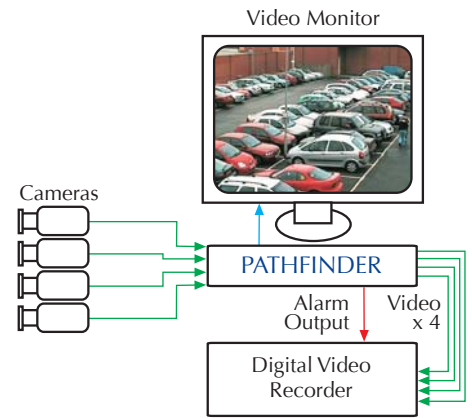
Pathfinder provides alarm signals which are used to alert guards, start recording, or switch video displays.

A video loop-through is provided for each video channel, allowing **Pathfinder** to be connected in series with monitors, switchers, recorders, etc.. Each channel also has a separate video output with graphic overlay for displaying the position of objects detected in the scene. A further benefit is the provision of a 4:1 switched video output channel. This displays either a fixed camera sequence (1,2,3,4) or a blank screen, and automatically switches to display any channel where motion is detected. Multiple alarms are displayed in sequence.

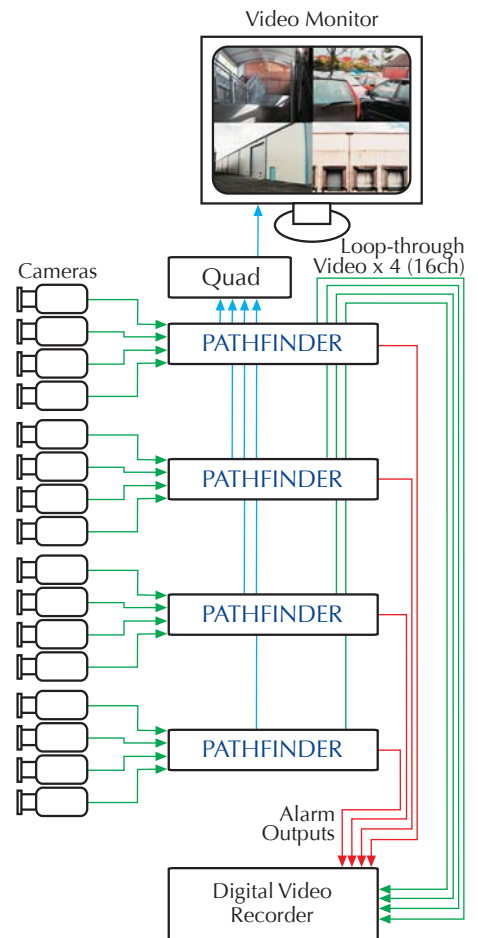
Pathfinder can even be used with Pan-Tilt-Zoom (PTZ) cameras. It ignores the apparent movement due to PTZ actions, and resumes detection in the new scene after the camera comes to rest.

PATHFINDER

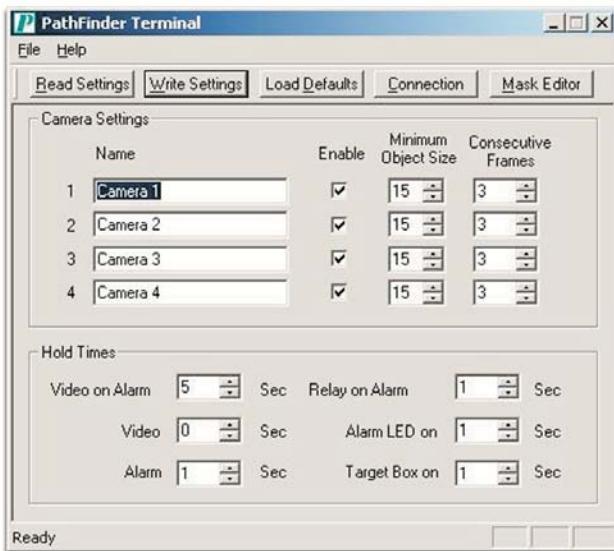
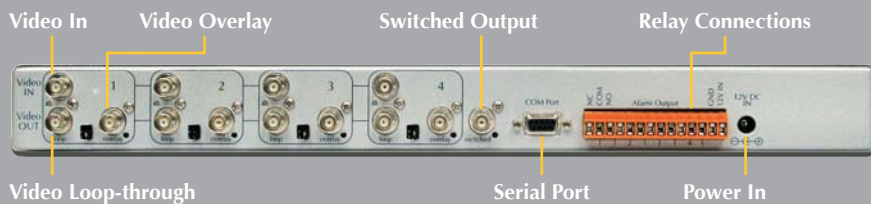
Product Range	PF4 (4 camera input).
Video Input	Composite colour/mono. 1V peak-peak; 75Ω; PAL or NTSC.
Video Output	Loop through per channel (switchable termination). Video with camera text and target overlay.
LED Indicators	Power indicator: RED Video Connected: GREEN (one per channel) Alarm detect: RED (one per channel)
User Interface	Normal operation: none required. Installation: Windows program for adjustment of user options (see screenshot). connects via serial port (serial cable and software supplied) as option.
User Options	Minimum object size adjustment (if required). Zone masking: 32 x 32 grid. Switched display output (blank screen or fixed sequence). Alarm channel display time: 0.2 to 10 seconds. Alarm relay ON time: 0.2 to 10 seconds. Alarm LED ON time: 0.2 to 10 seconds. Camera channel ID: 20 characters.
Connections	Video connections: BNC. Termination switch: jumper. Comms port: RS232 serial 9-pin D-sub. Power input: 2-pin power jack or screw terminal. Alarm relays 1-4: screw terminal.
Power	12V DC (12W) power supply included. Specify UK or European.
EMC	CE approved.
Dimensions	H45mm x W440mm x D340mm. 1U 19" rack-mountable - brackets supplied.



Simple 4-channel system



16-channel system



Windows program for control of PATHFINDER user options



DIGITAL CCTV SYSTEMS

Visimetrics (UK) Ltd
Skye House
Skye Road
Prestwick
KA9 2TA

Tel • +44 (0)1292 673 770

Fax • +44 (0)1292 677 990

e-mail • sales@visimetrics.com