

NTL

LARGE HOUSING FOR THERMAL CAMERAS

MAIN FEATURES

Made of AISI 316L electropolished stainless steel

Germanium window

For highly aggressive environments

IP66/IP67

Available with different window dimensions: Ø 55mm (2.1in), Ø 70mm (2.8in) and Ø 110mm (4.3in)

Available accessories: heater, camera power supply

DESCRIPTION

This housing for thermal camera provides the vision also in complete darkness, fog, rain, smoke or for long-range distances.

It is possible to use it for a wide range of high-security surveillance systems, such as: monitoring and rescue in the event of a fire, public safety, along with airport, industrial and environmental surveillance.

The germanium window is external non-scratch treated, Hard Carbon Coating (DLC), and internal antireflection; the spectral range is from 7.5 to 14µm.

The big dimensions of this camera housing make it suitable to contain the largest zoom lenses of the market.

The NTL housing can be installed on NXPTH Pan & Tilt head, to obtain a complete positioning system.



NTL + NXWBL



NTL + NXWBL

AVAILABLE MODELS

Model Number	Housing sunshield	Power supply 230Vac	Ø germanium window
NTL1K1000	✓	✓	55mm (2.1in)
NTL1K1300	✓	✓	70mm (2.8in)
NTL1K1500	✓	✓	110mm (4.3in)

TECHNICAL DATA

GENERAL

Constructed from electropolished stainless steel (austenitic alloy stainless steel, corrosion and heat resistant according to the following standards):

- AISI 316L
- UNI 6900-71: X 2 Cr Ni Mo 17 12 2
- DIN 17006: X 2 Cr Ni Mo 17 13 2
- N° werkstoff 1.4404
- AFNOR: Z2 CND 17-12
- BSI: 316S11

The screws utilised are in austenitic alloy stainless steel, corrosion and heat resistant according to the following standards:

- UNI 6900: X 5 Cr Ni Mo 1712
- AISI: 316
- ISO quality: A4
- Resistance class ISO: 80

UNI: Ente Nazionale Italiano di Unificazione, AISI: American Iron and Standard Institute, DIN: Deutsche Industrie Normen, AFNOR: Association Française de Normalisation, BSI: British Standard Institution, ISO: International Organization for Standardization.

MECHANICAL

- Cable glands: 4xPG13.5 (nickel-plated brass for external connections)
- Flange thickness: 12mm (front), 9mm (back)
- External body polishing
- Gaskets: High sealing O-ring
- Internal usable area (WxH): 112x112mm (4.4x4.4in)
- Internal usable length: 562mm (22.1in)
- Internal usable length (with heater): 477mm (18.7in)
- Unit weight: 13kg / 28.7lb

Germanium window

- NTL1K1000 (internal) Dimensions (Ø): 70mm (2.8in) (external), 55mm (2.1in)
- NTL1K1300 (internal) Dimensions (Ø): 85mm (3.3in) (external), 70mm (2.8in)
- Thick: 2mm (0.07in)
- NTL1K1500 (internal) Dimensions (Ø): 125mm (4.9in) (external), 110mm (4.3in)
- Thick: 3mm (0.1in)
- External scratch-resistant treatment: Hard Carbon Coating (DLC)
- Internal antireflection treatment
- Spectral range: 7.5µm ÷ 14µm
- Medium transmittance (7.5µm ÷ 11.5µm): 94%
- Medium transmittance (11.5µm ÷ 14µm): 90%

ELECTRICAL

- Heating (Ton 15°C±3°C (59°F ±5°F), Toff 22°C±3°C (77°F±5°F))
- Power supply/Consumption: IN 12Vdc/24Vac, 20W max
- Power supply/Consumption: IN 120/230Vac, 40W max

ENVIRONMENT

- Indoor/Outdoor
- Operating temperature with heating: -20°C / +60°C (-4°F / +140°F)

CERTIFICATIONS

- CE: EN61000-6-3, EN60065, EN50130-4
- IP66/IP67 EN60529

ACCESSORIES

- ONXLH1 Heater 120/230Vac
- ONXLH2 Heater 12Vdc/24Vac
- ONXPS1B Wide range power supply for camera IN 100-240Vac - OUT 12Vdc, 1A
- ONXPS2B Camera power supply IN 230Vac - OUT 24Vac, 400mA

BRACKETS AND ADAPTORS

- NXWBL Stainless steel wall bracket with joint

RELATED PRODUCTS

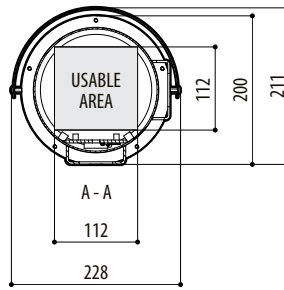
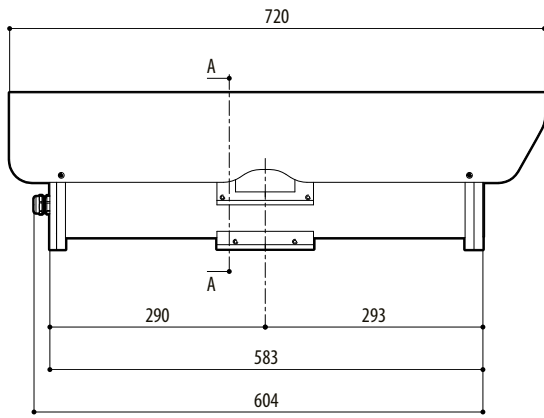
- NXPPTH Stainless steel Pan & Tilt

PACKAGE

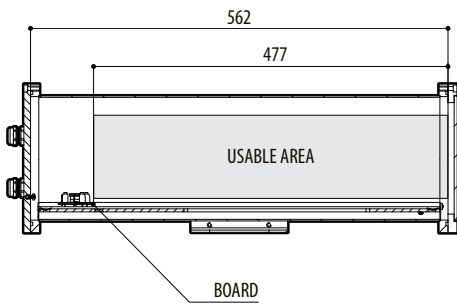
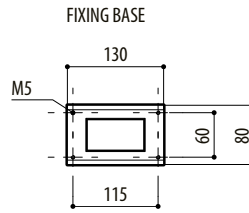
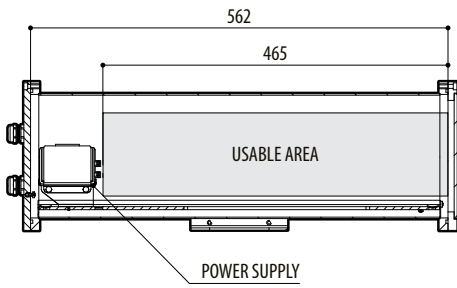
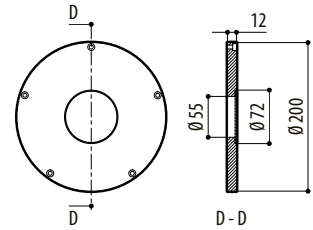
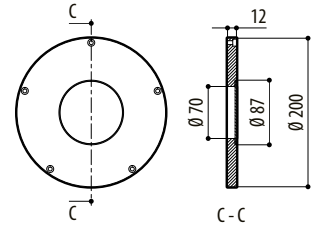
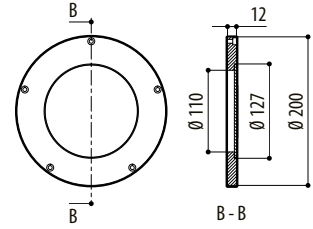
Model Number	Weight	Dimensions (WxHxL)	Master carton
NTL1K1000	15kg / 33.5lb	29.5x35x75cm (11.6x13.8x29.5in)	-

TECHNICAL DRAWINGS

Sizes in millimeters.



FRONT FLANGE



NTL

