

EXPT

EX-PROOF INTEGRATED P&T MOTORS WITH CAMERA HOUSING



MAIN FEATURES

Certifications for use in Zone 1 and 2, Group IIC (Gas), and in Zone Ex tb 21 and 22(Dust)

Solid anticorodal aluminum construction

Horizontal range 360° with speed 6°/s, vertical range -90° / +90° with speed 2.4°/s

Version with glass protection device, EXPTD

Preset function

Versions with Autopan

7.5m (23ft) prewired multipolar armored cable

Not to be installed upside down

Environment temperature: -20°C / +50°C (-4°F / 122°F) or -40°C/+50°C (-40°C/+122°F) with reinforced heater

DESCRIPTION

The EXPT Pan & Tilt is characterised by the absence of external rotating cables, for easy installation and safe operation of the device. The EXPT is supplied with presets and be equipped on request with sunshield, auto-pan and a patented glass protection device.

The glass protection device consists of a connection flange with the housing, a closing flange and an explosion-proof central body containing a rugged and transparent glass, a motor powered in 24Vac, two windings and a transparent Mylar film, installed just in front of the glass. The motor drives, through four pinions with gear rim, the winding for recovering the dirty Mylar film, while at the same time the other winding installed on the opposite side releases the clean film. The Pan & Tilt units EXPT are made with strong Anticorodal aluminium die-cast alloy of AISi 7Mg EN - AB 42000 group.

The P&T functions are controlled by the EXDTRX telemetry receiver..



EXPTC



EXPTD + EXPTS



EXDTRX324



EXDTRX3

AVAILABLE MODELS

Model Number	Housing heater 24Vac	Pre-wired multipolar cable	Preset	Autopan	Glass protection device	Environment temperature
EXPTC000	✓	✓	✓	-	-	-20°C / +50°C (-4°F / 122°F)
EXPTC033R	✓	✓	✓	✓	-	-40°C / +50°C (-40°F / +122°F)
EXPTD035R	✓	✓	✓	✓	✓	-40°C / +50°C (-40°F / +122°F)



TECHNICAL DATA**GENERAL**

Non-corrosive die-cast aluminium (anticorrosive)

Epoxy powder painted with orange peel effect, RAL7032

Environment temperature: -20°C / +50°C (-4°F / 122°F) or -40°C / +50°C (-40°F / +122°F) with reinforced heater

MECHANICAL

Not to be installed upside down

Horizontal rotation: 0-360°

Horizontal speed (fixed): 6°/s

Pan Torque: 2.5kgm

Vertical plane movement: ±90°

Tilt speed (fixed): 2.4°/s

Vertical torque: 6kgm

Horizontal limit switch adjustable only for the Autopan function

1 cable gland Ex d 3/4" NPT IP66 ATEX for armoured cables in the base of the P&T according to the housing marking

Pre-wired multipolar armoured cable normally supplied with 7.5m (25ft) length: diameter 21.4mm (0.85in): 21 poles 0.5mm², 6 poles 1.5mm², 2 RG179, 75 Ohm

Minimum bending radius: 10x cable diameter

External dimensions:

- EXPTC 427.5x571.4x560mm (16.8x322.5x22in)
- EXPTD 573.5x581x580mm (22.6x22.9x22.8in)

Internal dimensions:

- EXPTC Ø 180x380mm (7x14.9in)
- EXPTD Ø 180x460mm (7x18.1in)

Internal usable area:

- EXPTC 100x100x280mm (3.9x3.9x11in)
- EXPTD 100x100x280mm (3.9x3.9x11in)

Unit weight:

- EXPTC 56.5kg / 124.5lb
- EXPTD 62kg / 136.9lb

Window:

- EXPTC Ø 114mm (4.5in)
- EXPTD 70x56mm (2.7x2.2in)

Glass protection device:

- Ø 250x140mm (9.8x5.5in)
- Mylar film 80mm (3.1in) wide and 18m (59ft) length, 350 shifting steps, marks printed on the last 50cm (19in)

ELECTRICAL

Power supply: IN 24Vac, 50/60Hz

Horizontal and vertical motor consumption: 50W max

Consumption with P&T static, heating switched off 0 W

Standard vertical and horizontal preset potentiometers

Reinforced heater, Ton 10°C±4°C (50°F±7°F), Toff 25°C±3°C (77°F±5°F):

- 3 resistors in the housing
- 2 resistors in the P&T (one for each motor)
- Consumption: 100W max

Glass protection device:

- 24Vac, Power consumption 2W max

Devices to install inside the housing:

- Camera equipped with lens with max total power of 20W
- Power supply max 24Vac (only for analog camera)
- Usable volume for camera/lens: 2800cm³
- Minimum distance between the walls of the housing and the camera/lens: 12mm

ENVIRONMENT

Indoor/Outdoor

Operating temperature with heating: -20°C / +50°C (-4°F / 122°F)

Operating temperature with reinforced heater: -40°C / +50°C (-40°F / +122°F)

Always refer to the temperature in the marking.

Relative Humidity 10-95% (no condensation)

CERTIFICATIONS

ATEX (EN 60079-0: 2009, EN 60079-1: 2007, EN 60079-31: 2009):

⊕ II 2G Ex d IIC T6 Gb

⊕ II 2D Ex t IIIC T85°C Db IP66

Ⓢ 0044: notify number from competent body

IECEx (IEC 60079-0: 2007, IEC 60079-1: 2007, IEC 60079-31: 2008):

Ex d IIC T6 Gb

Ex t IIIC T85°C Db IP66

EAC EX:

Ex d IIC T6 Gb

Ex tb IIIC T85 Db IP66

KCs 16-KA4B0-0059 - 16-KA4B0-0056

Ex d IIC T6

Ex tb IIIC T85°C

ACCESSORIES

EXPTS000 Sunshield 650mm for EXPT series

EXPTS001 Sunshield 760mm for EXPTD

RELATED PRODUCTS

EXDTRX3 Data telemetry receiver 17 functions, 230Vac

EXDTRX324 Data telemetry receiver 17 functions, 24Vac

BRACKETS AND ADAPTORS

EXPTWB000 Bracket RAL7032 for EXPT series

SPARE PARTS

OEXMYLAR Mylar film replacement kit, 18m (59ft), 350 steps

OEXVETN Complete front flange with glass for EXHC and EXPTC series

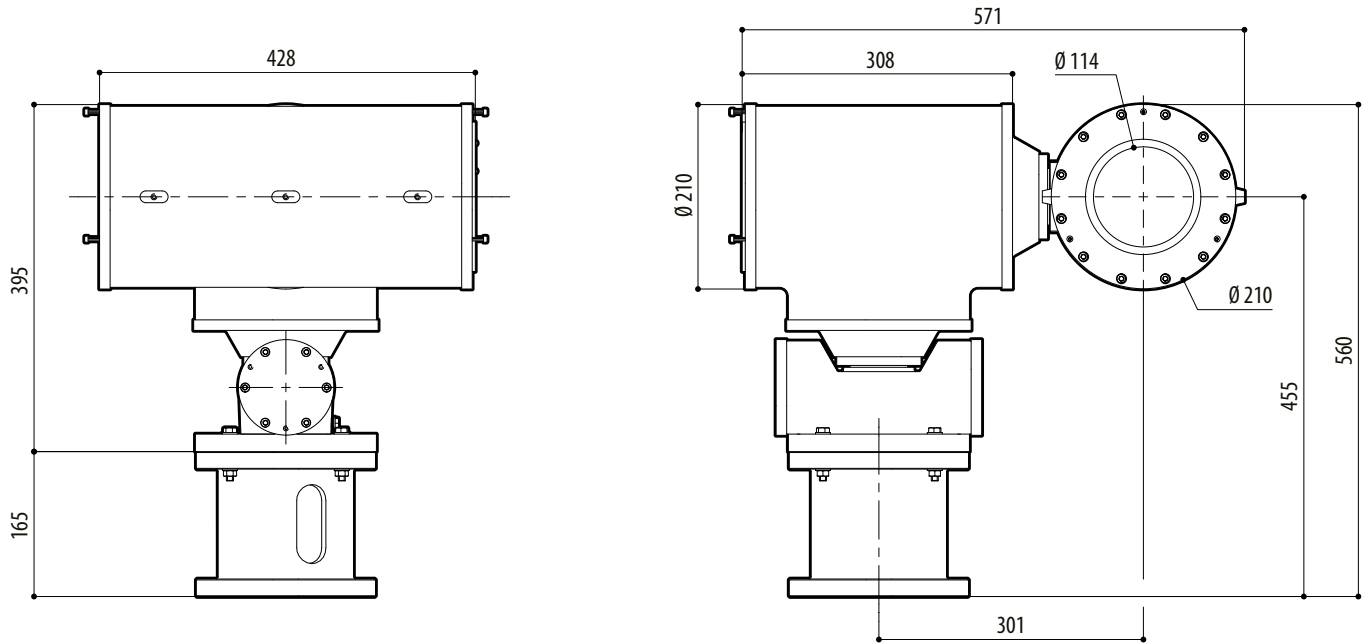
OEXDPVN Complete front flange with glass protection device for EXHD and EXPTD series, RAL7032

OSLIEX Internal slide complete with heater for EXHC and EXPTC series

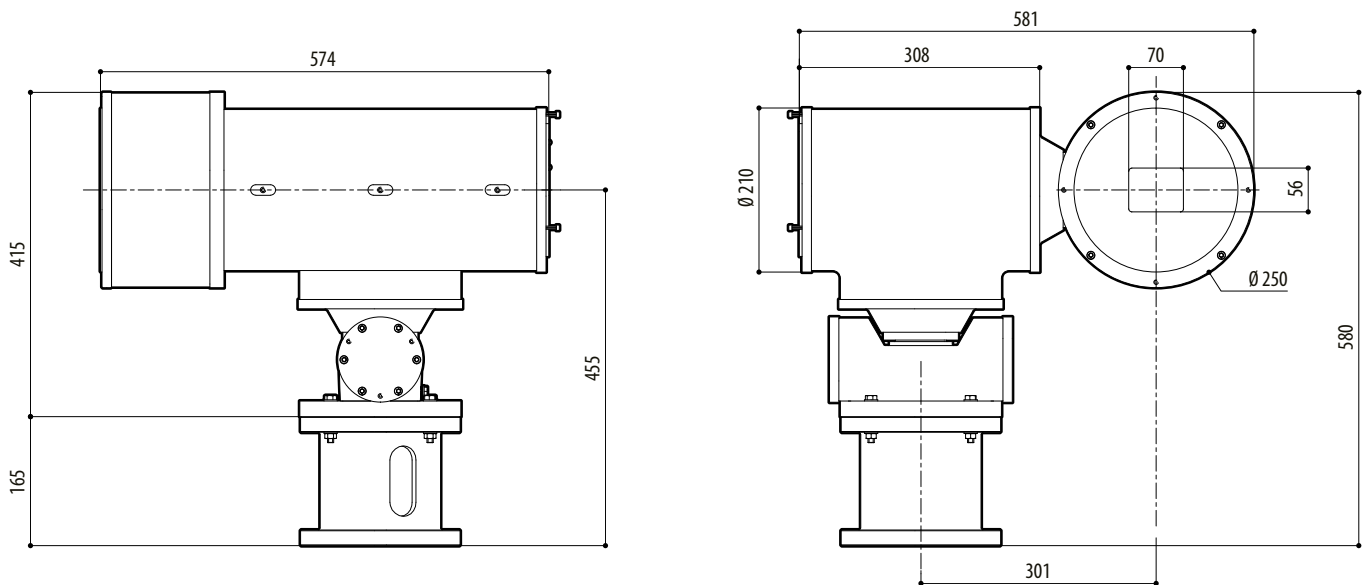
OSLIEDX Internal slide complete with heater for EXHD and EXPTD series

PACKAGE

Model Number	Weight	Dimensions (WxHxL)	Master carton
EXPTC000	61.2kg (135lb)		76x41x67cm
(30x16x26.4in)	-		
EXPTD035R	66kg (145.5lb)		76x41x67cm
(30x16x26.4in)	-		



EXPTC



EXPTD

