

EXH

EX-PROOF HOUSING



MAIN FEATURES

Solid anticorodal aluminum construction

IP66

2 holes for cable glands 3/4" NPT

Version with device for the protection of the glass installed on the front of the housing (EXHD)

Supplied with heater. Sunshield as option.

Environment temperature: -40°C/+50°C (-40°F/+122°F) with reinforced heater

DESCRIPTION

The EXH housings are made with strong Anticorodal aluminium die-cast alloy of AISi Mg EN AB- 42000 group.

All external components are stove enameled using powder offering an excellent resistance to UV rays, salt-spray, environment polluting substances.

EXHC

The cylindrical body of EXHC housing (diameter 210mm and length 400mm) is closed on the opposite sides by two 12mm thick flanges. The housing is supplied with two holes for the 3/4" NPT cable glands. The camera housing is equipped with heater and optional sunshield.

EXHD

Ex-proof housing with the same specifications as the EXHC series but fitted with a patented device for the protection of the glass which gives clear vision in dirty environments.

The glass protection device consists of a connection flange with the housing, a closing flange and an explosion-proof central body containing a rugged and transparent Mylar film, a motor powered in 24Vac, two windings and a transparent Mylar film, installed just in front of the glass. The motor drives, through four pinions with gear rim, the winding for recovering the dirty Mylar film, while at the same time the other winding installed on the opposite side releases the clean film.

NOTE: the control unit of the glass protection device is not supplied with the product.

The transparent Mylar film, 80mm wide and 18m long, allows 350 steps. When the film is dirty, the operator will activate the motor shifting the film to obtain a clean camera picture (the step for allowing the complete shift of the dirty film is about 50mm). The end of the Mylar film will be indicated to the operator through marks printed on the last 50cm of the film.



EXHC + EXHS



EXHD + EXHS

AVAILABLE MODELS

Model Number	Housing heater 24Vac	Housing heater 230Vac	Reinforced heater 24Vac	Glass protection device	Environment temperature
EXHC003R	✓	–	✓	–	-40°C / +50°C (-40°F/+122°F)
EXHC203R	–	✓	–	–	-40°C / +50°C (-40°F/+122°F)
EXHD005R	✓	–	✓	–	-40°C / +50°C (-40°F/+122°F)

TECHNICAL DATA**GENERAL**

Non-corrosive die-cast aluminium (anticorrosive)

Epoxy powder painted with orange peel effect, RAL7032

MECHANICAL

2 holes for cable glands 3/4" NPT

External dimensions:

- EXHC Ø 210mmx427.5mm (8.2x16.8in)
- EXHD Ø 250x573.5mm (9.8x22.6in)

Internal dimensions:

- EXHC Ø 180x380mm (7x14.9in)
- EXHD Ø 180x460mm (7x18.1in)

Internal usable area:

- EXHC 100x100x280mm (3.9x3.9x11in)
- EXHD 100x100x280mm (3.9x3.9x11in)

Glass window:

- EXHC Ø 114mm (4.5in)
- EXHD 70x56mm (2.7x2.2in)

Unit weight:

- EXHC 15kg / 33lb
- EXHD 24kg / 52.9lb

Glass protection device:

- Glass protection device: Ø 250x140mm (9.8x5.5in)
- Mylar film 80mm (3.1in) wide and 18m (59ft) length, 350 shifting steps, marks printed on the last 50cm (19in)

ELECTRICAL

Reinforced heater: Ton 10°C±4°C (50°F±7°F), Toff 25°C±3°C (77°F±5°F)

- 3 resistors in the housing, consumption 60W max

Glass protection device:

- 24Vac, Power consumption 2W max

Devices to install inside the housing

- Camera equipped with lens with max total power of 20W
- Power supply max 24Vac or 230Vac
- Useful volume for camera / lens: 2800cm³
- Minimum distance between the walls of the housing and the camera/lens: 12mm

ENVIRONMENT

Indoor/Outdoor

Operating temperature with heating: -40°C / +50°C (-40°F/+122°F)

Always refer to the temperature in the marking.

CERTIFICATIONS

ATEX (EN 60079-0: 2009, EN 60079-1: 2007, EN 60079-31: 2009):

- II 2G Ex d IIC T6 Gb
- II 2D Ex t IIIC T85 °C Db IP66
- 0044: notify number from competent body

IECEX (IEC 60079-0: 2007, IEC 60079-1: 2007, IEC 60079-31: 2008):

- Ex d IIC T6 Gb
- Ex t IIIC T85 °C Db IP66

EAC EX:

- Ex d IIC T6 Gb
- Ex tb IIIC T85 Db X IP66

ACCESSORIES

EXHS000	Sunshield 650mm for EXH series
EXHS001	Sunshield 760mm for EXHD
OCTEX3/4C	Cable gland with gasket EX 3/4" NPT, unarmoured cable IECEX-ATEX-EAC Ex
OCTEXA3/4C	Cable gland with gasket EX 3/4" NPT, armoured cable IECEX-ATEX-EAC Ex
OCTEXB3/4C	Barrier cable gland 3/4" NPT, unarmoured cable IECEX-ATEX-EAC Ex
OCTEXBA3/4C	Barrier cable gland 3/4" NPT, armoured cable IECEX-ATEX-EAC Ex
OCTEX3/4	Cable gland with gasket EX 3/4" NPT, unarmoured cable ATEX
OCTEXA3/4	Cable gland with gasket EX 3/4" NPT, armoured cable ATEX
OCTEXB1/2C	Barrier cable gland EX 1/2" NPT unarmoured cable ATEX-IECEX-EAC Ex
OCTEX1/2C	Cable gland with gasket EX 1/2" NPT unarmoured cable ATEX-IECEX-EAC Ex, with gasket from 3 to 8mm (0.12 to 0.31in)
OCTEXS1/2C	Cable gland with gasket EX 1/2" NPT unarmoured cable ATEX-IECEX-EAC Ex, with gasket from 7.5 to 11.9mm (3 to 4.7in)
OCTEX1/2-3/4C	Cable glands reduction in nickel-plated brass 3/4" - 1/2" NPT IECEX-ATEX-EAC Ex
OCTEXP3/4C	Conduit cable gland nickel-plated brass 3/4" NPT IECEX-ATEX-EAC Ex
OEXPLUG3/4	Plug EX 3/4" NPT IECEX-ATEX-EAC Ex

BRACKETS AND ADAPTORS

EXWBJ000	Bracket and ball joint RAL7032 for EXH series
EXBJ000	Only ball joint for EXH RAL7032 housings

SPARE PARTS

OEXMYLAR	Mylar film replacement kit, 18m (59ft), 350 steps
OEXVET	Complete front flange with glass for EXHC and EXPTC series, RAL7032
OEXDPV	Complete front flange with glass protection device for EXHD and EXPTD series
OSLIEX	Internal slide complete with heater for EXHC and EXPTC series
OSLIEXD	Internal slide complete with heater for EXHD and EXPTD series

PACKAGE

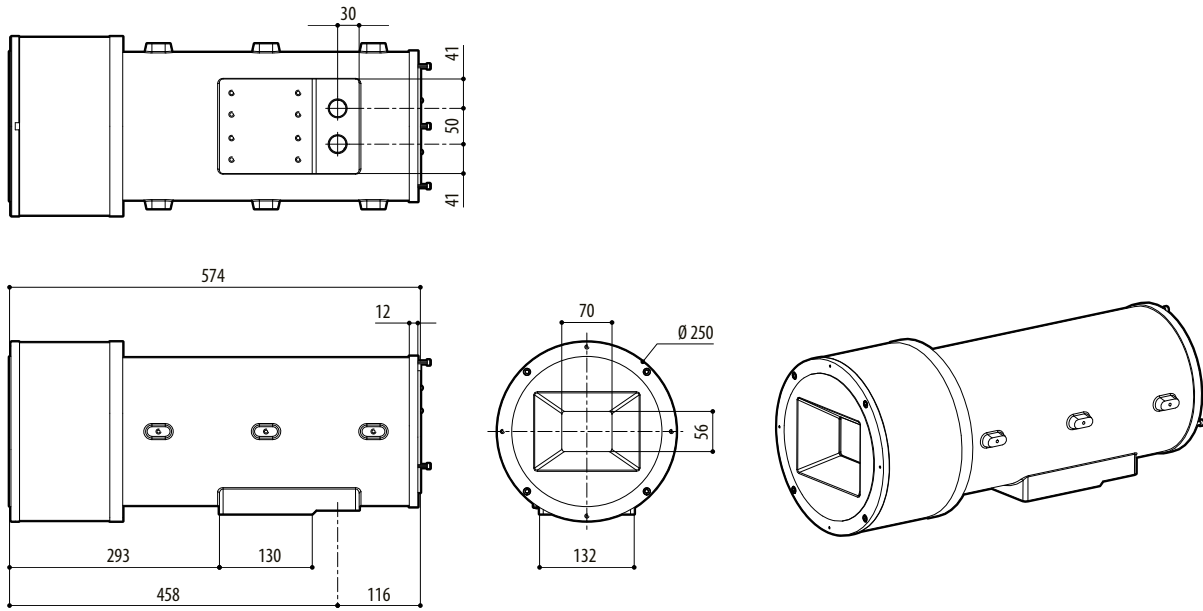
Model Number	Weight	Dimensions (WxHxL)	Master carton
EXHC003R	17.5kg (39lb)	61x32x31cm (24x12.6x12.2in)	-
EXHD005R	26.5kg (58lb)	43x67x67cm (17x26.3x26.3in)	-

1/2" NPT CABLE GLAND SELECTION GUIDE						
Zone, Gas	Cable gland type	Certification	Operating temperature	Cable	Cable glands part code	Diameter of the external cable (mm)
IIC, Zone 1 or Zone 2 IIB or IIA, Zone 1	Barrier	IECEX/ATEX/EAC	-60°C / +80°C (-76°F / +176°F)	Not armoured	OCTEXB1/2C	3 - 8
IIB or IIA, Zone 2	With gasket	IECEX/ATEX/EAC	-60°C / +100°C (-76°F / +212°F)	Not armoured	OCTEX1/2C	3 - 8
				Not armoured	OCTEXS1/2C	7.5 - 11.9

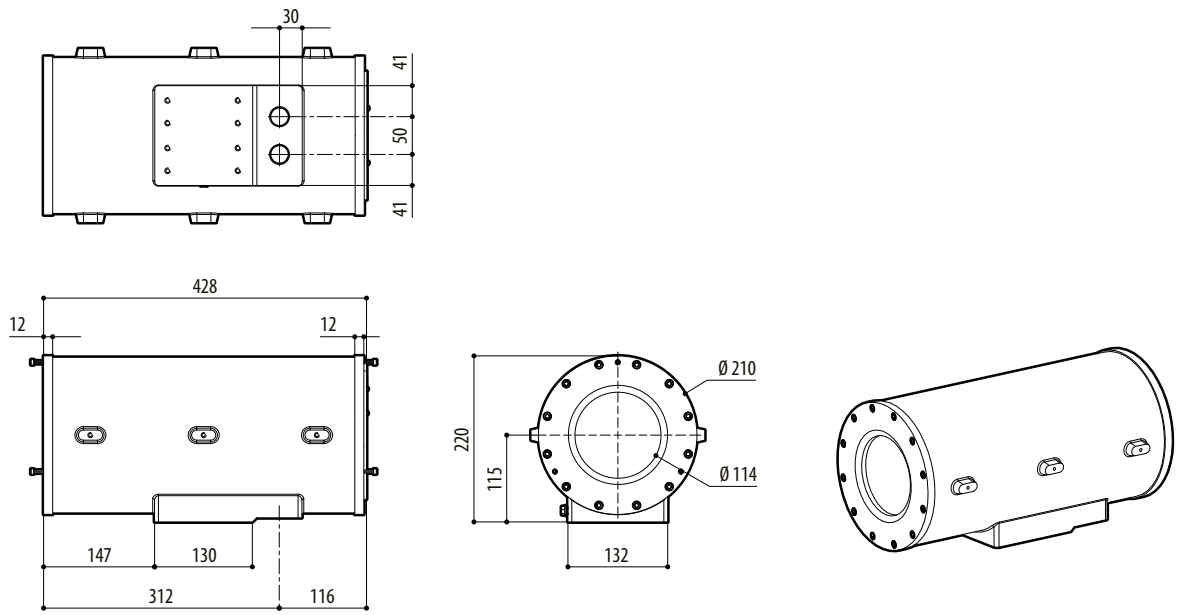
3/4" NPT CABLE GLAND SELECTION GUIDE							
Zone, Gas	Cable gland type	Certification	Operating temperature	Cable	Cable glands part code	Diameter of the external cable (mm)	Under armor cable diameter (mm)
IIC, Zone 1 or Zone 2 IIB or IIA, Zone 1	Barrier	IECEX/ATEX/EAC	-60°C / +80°C (-76°F / +176°F)	Not armoured	OCTEXB3/4C	13 - 20.2	–
				Armored	OCTEXBA3/4C	16.9 - 26	–
IIB or IIA, Zone 2	With gasket	IECEX/ATEX/EAC	-60°C / +100°C (-76°F / +212°F)	Not armoured	OCTEX3/4C	13 - 20.2	–
				Armored	OCTEXA3/4C	16.9 - 26	11.1 - 19.7
		ATEX	-20°C / +80°C (-4°F / +176°F)	Not armoured	OCTEX3/4	14 - 17	–
				Armored	OCTEXA3/4	18 - 23	14 - 17

TECHNICAL DRAWINGS

Sizes in millimeters.



EXHD



EXHC