

BRACKETS AND ADAPTERS FOR CAMERA HOUSINGS

WBJA WALL MOUNT

Made of aluminium

Fully adjustable swivel head

Load rating: 25kg (55lb)

Height: 185mm (7.3in)

Unit weight: 0.6kg (1.3lb)



WBJA

WBMA WALL MOUNT

Made of aluminium

Fully adjustable swivel head

Load rating: 25kg (55lb)

Length: 204mm (8in)

Unit weight: 0.5kg (1.1lb)



WBMA

WBOVA2 WALL MOUNT

Made of aluminium

Fully adjustable swivel head

Internal cable management

Load rating: 25kg (55lb)

Length: 204mm (8in)

The sealing rings OWBIP2 or OWBIP3 ensure an IP66 protection to the housing

Unit weight: 0.6kg (1.3lb)



WBOVA2

WBOV3A2 WALL BRACKET WITH SUPPORT PLATE AND WEATHERPROOF JUNCTION BOX

Made of aluminium

Internal cable management directly to the box

Load rating: 25kg (55lb)

Length: 204mm (8in)

The sealing rings OWBIP2 or OWBIP3 ensure an IP66 protection to the housing

Unit weight: 2.4kg (5.3lb)



WBOV3A2

WBLA WALL BRACKET FOR HGV

Solid anticorrosive aluminium construction

Load rating: 70kg (154lb)

Length: 457.5mm (18.7in)

Unit weight: 6.6kg (14.5lb)



WBLA

WCM3A CEILING MOUNT

Made of aluminium

Fully adjustable swivel head

Load rating: 15kg (33.5lb)

Length: 300mm (11.8in)

Unit weight: 1.8kg (4lb)



WCM3A

WFWCA PARAPET BRACKET

Made of aluminium

Fully adjustable swivel head

Load rating: 15kg (33.5lb)

Length: 185mm (7.3in)

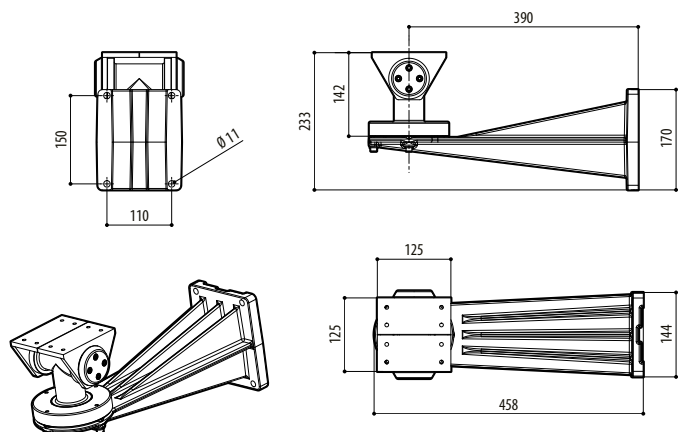
Available extension through WFWBTA

Unit weight: 0.5kg (1.1lb)

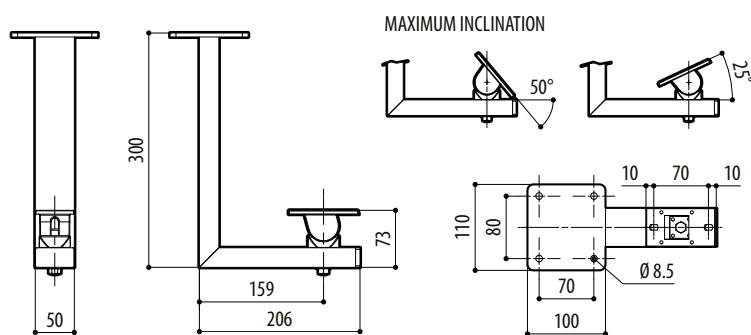


WFWCA

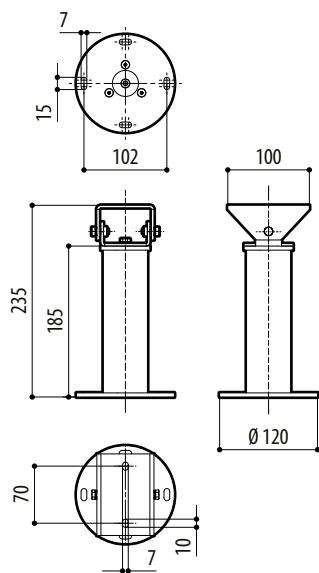
Sizes in millimeters.



WBLA

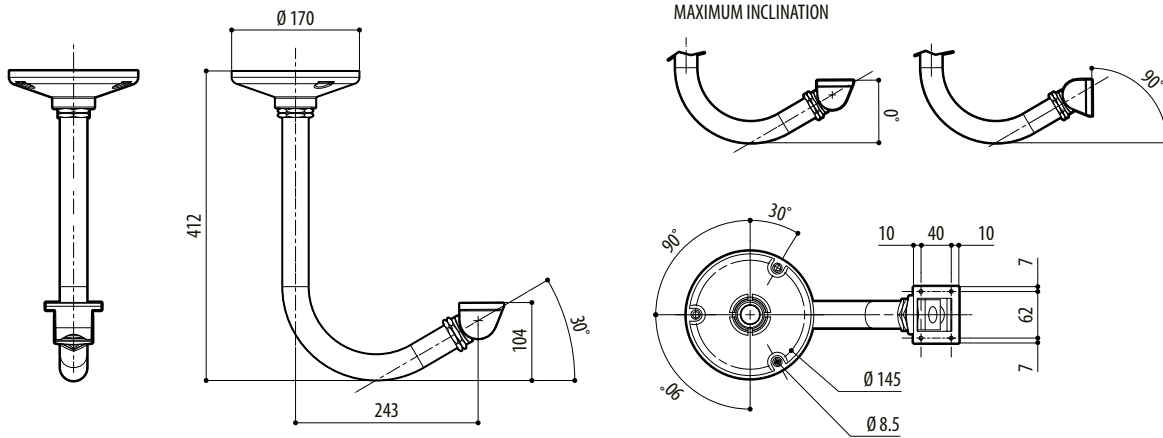


WCM3A

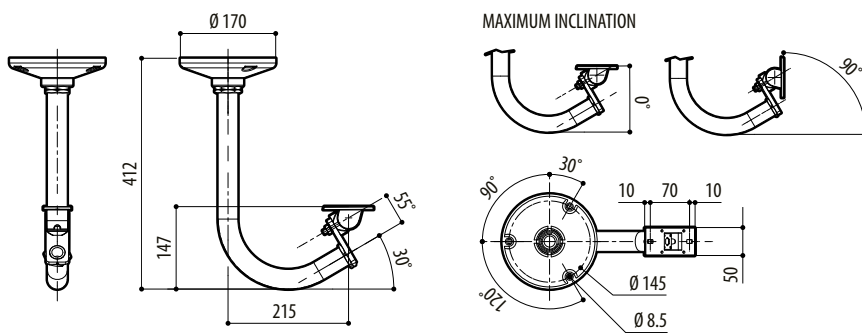


WFWCA

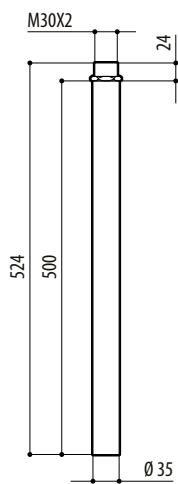
Sizes in millimeters.



WCM4A2

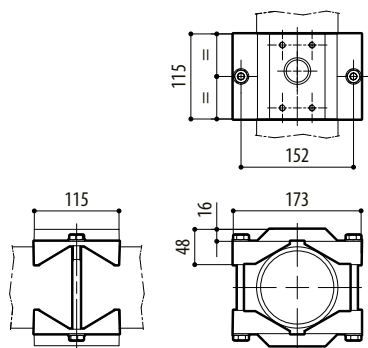


WCM5A

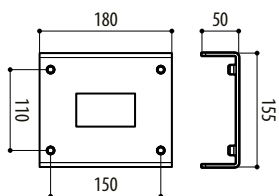


WCMPA

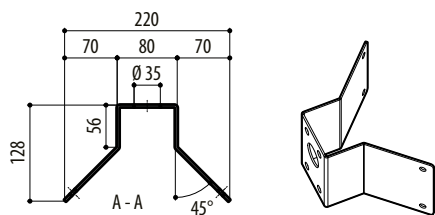
Sizes in millimeters.



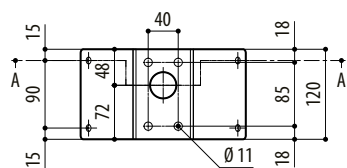
WSFPA



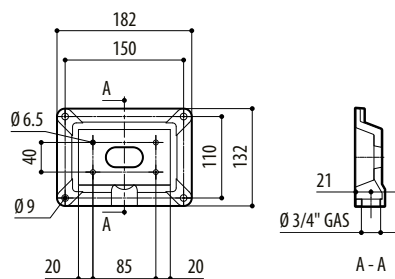
DBHWGC



WCWA



WCWA



WCPA