

- Indoor installation
- Sheet steel construction
- Vandal resistant polycarbonate glass
- Epoxypolyester painted
- Key lock



AVTPSKB housing have been designed for surveillance applications in places highly exposed to vandalism (underground parking lots, subway stations, prisons, police stations, corridors, supermarkets, etc).

AVTPSKB is made of sheet steel (2.5mm thick) and painted with epoxypolyester powder.

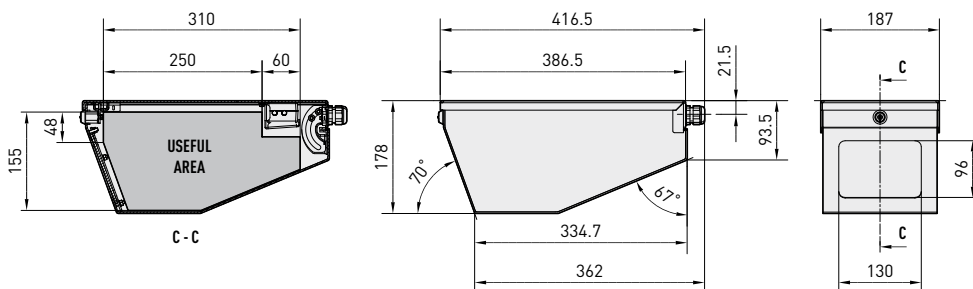
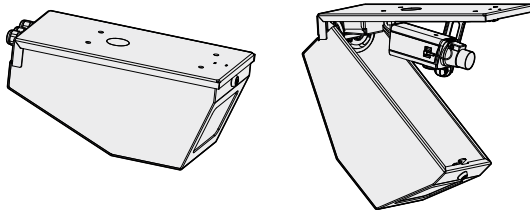
The housing is equipped with an internal bracket for the camera attachment and adjustment.

The compass opening allows ease installation and maintenance.

The AVTPSKB is individual or common key locked according to the models.

A vandal resistant polycarbonate glass is fixed on the front by means of an iron frame.

The cable outlet is made possible from the fixing base and from the 3 M20 cable glands on the back side. AVTPSKB can eventually be equipped with heater, camera power supply and alarm tamper switch.



The values are in millimeters.

### TECHNICAL DATA

4  
VANDAL RESISTANT HOUSINGS

AVTPSKB	
Models	
AVTPSK0A000B	Vandal resistant wedge housing with individual lock and key
AVTPSK0A101B	Vandal resistant wedge housing with common lock and key

#### GÉNÉRALITÉS

Build in sheet steel 2.5mm thick (0.1in)  
 Epoxypolyester powder painted RAL9002  
 Glass frame made in iron  
 Vandal resistant polycarbonate glass 4mm (0.1in) thick  
 Compass opening

#### MÉCANIQUE

External dimensions (BxHxL): 386x178x187mm (15.2x7x7.4in)  
 Individual key lock (AVTPSK0A000B)  
 Common key lock (AVTPSK0A101B)  
 Cable outlet through fixing side or 3 M20 cable glands  
 Window dimensions: 130x96mm (5.1x3.8in)

#### ELECTRICAL

**Heater Ton 15°C+/-3°C (59°F +/-5°F) Toff 22°C+/-3°C (71°F +/-5°F)**

- IN 12V DC/24V AC, consumption 20W max
- IN 115/230V AC, consumption 40W max

#### Camera power supply

- IN 110-240V AC - OUT 12V DC, 50/60Hz, 1A
- IN 230V AC - OUT 24V AC, 50Hz, 400mA

#### ACCESSORIES

OAVTPSH1B	Heater 115/230V AC
OAVTPSH2B	Heater 12V DC/24V AC
OAVTPSPS1B	Wide range power supply IN 100-240V AC - OUT 12V DC
OAVTPSPS2B	Power supply IN 230V AC - OUT 24V AC
OAVTPSTA	Tamper switch

#### ENVIRONMENT

Indoor  
 Operating temperature with heater: -20°C / +50°C (-4°F / +122°F)

#### COMPLIANCE TO

CE according to EN 61000-6-3, EN 60065, EN 50130-4  
 Impact resistance IK10 according to EN 50102

#### SPARE PARTS LIST

OSER1B	Individual spare key/lock (AVTPSK0A000B)
OSER2B	Common spare key/lock (AVTPSK0A101B)
OVET2TPSKB	Polycarbonate glass



**Unit Weight:**  
 AVTPSKB 6.3kg / 13.8lb

**Package Weight:**  
 AVTPSKB 6.7kg / 14.7lb

**Package Dimensions (BxHxL):**  
 AVTPSKB 22x20x44cm / 8.7x7.9x17.3in

**Master Carton:**  
 AVTPSKB 5 units