



Key Features

- 28x Zoom
- High power IR lamps for 200 metre Diameter IR Coverage
- High Resolution 550TVL Sony Camera
- 3D Noise Reduction
- Wide Dynamic Range
- IR Focus Correction
- Image Stabilizer
- High Sensitivity Camera
- Fast, Smooth and Super Reliable Stepper Motor Drive
- Automatic Protocol Detection
- Automatic Baud Rate Detection
- Automatic Camera Address Detection
- No DIP Switches to Set
- 255 Presets, 16 Tours, 30 Privacy Masks
- Advanced Electronics and Software
- Enhanced Preset Programming
- Auto Preset Learning Mode
- Auto Tour Learning Mode
- Multiple Tour Scheduling
- Easy Tour Editing
- Super-smooth Privacy Masks
- Easy-to-use Menu Structure
- AC or DC power
- IP66 Power Supply
- Mounting options include Wall, Corner, Pole, Swan-Neck, Pendant, Custom
- Sun and Rain Visor Option
- 16-input Alarm Option

Overview

The CMOR D4 IR Dome features super-reliable stepper motor drive, new high resolution cameras and high-power infra-red (IR) lamps that focus IR light wherever the camera is directed. Now in its fourth generation, the proven CMOR design provides reliability together with smooth, fast movement and clear images, day and night.

The innovative CMOR® design provides up to 200m diameter viewing in complete darkness. The highly efficient and focussed IR lamps track the dome movement ensuring full 360° pan and 90° tilt coverage.

Cutting edge design enables the CMOR® IR Dome to be extremely energy efficient whilst significantly reducing light pollution.

The amount of light directed to the scene being viewed would require a large amount of lighting using the old 'flood' approach.

This means that not only is the picture and range much improved, but the CMOR® IR Dome is greener too, using up to fifty times less energy than alternative solutions.

- Night-time Vision
- Superior night-time target identification
- Fast, Smooth Movement
- Auto Baud, Protocol and Address
- Manufactured in the UK

Order Codes

Vi-D428	28:1 zoom, 830nm IR Dome, 24V AC/DC
Vi-PSU1B	CMOR Dome Power Supply, IP66, 24VDC
Vi-AL1A	16-input alarm module
Vi-B2	Wall bracket and 3m cable
Vi-B3	Pendant mount (380mm) with 4m cable
Vi-B4	Swan neck mount with 4m cable
Vi-B5	Corner adaptor for wall bracket
Vi-B6	Pole adaptor
Vi-B9	Sun and rain visor. Reduces glare and effects of heavy rain
Vi-CAB1/10M	10m cable for wall bracket
Vi-CAB2/10M	10m cable for swan-neck/pendant

Specifications

Camera	
Sensor	Sony Colour/monochrome Ex-View HAD 1/4" CCD PAL, 440,000 pixels
Colour sensitivity	0.1lux (recommended 100 to 100,000 lux)
Monochrome sensitivity	0.01lux
Optical zoom	x28
Resolution	550TVL
Angle of view (horiz)	55.8°-2.1°
Focal length	3.5 - 98mm
Aperture	F1.35 - F3.7
Digital zoom	12x
Other features	Backlight compensation, 3D noise reduction, wide dynamic range, image stabiliser

IR Illumination

IR Control	Light sensing, schedule timer, manual
IR wavelength options	830nm (semi covert)
Night time coverage	200m diameter

Mechanics

Pan speed	0.02 to 360°/sec
Tilt speed	0.02 to 200°/sec
Pan angle	360° continuous pan rotation
Pan limits	a left and right limit may be programmed
Tilt angle	+5 to -90°
Pan/Tilt to zoom ratio	Menu programmable relation between zoom and rate

Physical and Environmental

Material	Vandal resistant cast aluminium dome and polycarbonate hemisphere
Operating temperature	-35°C to 50°C
Environmental	IP66
Finish	Grey (RAL 7035), black and other colours on request
Dimensions	190mm hemisphere diameter, 260mm high, 250mm max width (including IR lamps)

Telemetry

Auto protocol sensing	Yes
RS485 protocols	Videoswitch VXP4, PelcoD, PelcoP, Vista, auto-sensing
Addressing	1 to 255, auto-sensing, confirmed via menu
Baud rate	9600, 4800 or 2400 baud, auto-sensing
RS485 Termination	Set via menu
Coax telemetry	BBV compatible (auto sensing)

Features

Menu	Easy-to-use on-screen menu
Dynamic privacy zones	30 zones, smooth movement
Presets	255, auto-set mode for easy setting of multiple presets
Tours	16 tours, up to 64 presets each
Tour schedule	A different tour (or preset) may be set for each hour of day
Dwell and Speed	Independent dwell time and speed on each preset position
Preset resolution	0.02°
Camera/Preset titles	16 alphanumeric characters
Video launch amplifier	Gain 8 steps, HF Lift 8 steps, menu controlled
Password Protection	Yes, 3 levels
Photocell	Inbuilt
Fan	Yes
Heater	Yes
Quick mount/release	The dome hooks safely onto the mount without the need of a safety wire; secured using a hand-operated tightening wheel
Origin	Manufactured in the UK

Power

Power requirement	24V DC @2.5A or 24V AC @ 2.5A
-------------------	-------------------------------

Options

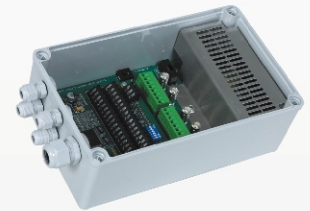
Alarm Module	16 alarm inputs, alarm relay output, fits in power supply
Power supply	240Vac in, 24V DC @2.5Amps out, 142 x 232 x 95mm
Mounting brackets	Wall, corner, pole, swan-neck, pendant, custom

Due to a policy of continuous product development, specifications may change without notice

CMOR Vi-D428

Accessories

Vi-PSU1 Power Supply
(shown with Vi-AL1 Alarm module fitted)



Vi-B2 Wall mount bracket



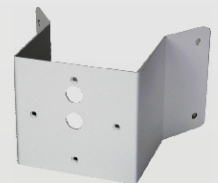
Vi-B3 Pendant mount



Vi-B4 Swan neck mount



Vi-B5 Corner adaptor



Vi-B6 Pole mount adaptor



www.videoswitch.co.uk

Videoswitch, Ocean House, Redfields Industrial Park, Redfields Lane, Church Crookham, Hants GU52 0RD
Email: sales@videoswitch.co.uk Tel: 01252-851510 Fax: 01252-851296



Key Features

- 36x Zoom
- High power IR lamps for 160 metre Diameter IR Coverage
- High Resolution 550TVL Sony Camera
- 3D Noise Reduction
- Wide Dynamic Range
- IR Focus Correction
- Image Stabilizer
- High Sensitivity Camera
- Fast, Smooth and Super Reliable Stepper Motor Drive
- Automatic Protocol Detection
- Automatic Baud Rate Detection
- Automatic Camera Address Detection
- No DIP Switches to Set
- 255 Presets, 16 Tours, 30 Privacy Masks
- Advanced Electronics and Software
- Enhanced Preset Programming
- Auto Preset Learning Mode
- Auto Tour Learning Mode
- Multiple Tour Scheduling
- Easy Tour Editing
- Super-smooth Privacy Masks
- Easy-to-use Menu Structure
- AC or DC power
- IP66 Power Supply
- Mounting options include Wall, Corner, Pole, Swan-Neck, Pendant, Custom
- Sun and Rain Visor Option
- 16-input Alarm Option

Overview

The CMOR D4 IR Dome features super-reliable stepper motor drive, new high resolution cameras and high-power infra-red (IR) lamps that focus IR light wherever the camera is directed. Now in its fourth generation, the proven CMOR design provides reliability together with smooth, fast movement and clear images, day and night.

The innovative CMOR® design provides up to 200m diameter viewing in complete darkness. The highly efficient and focussed IR lamps track the dome movement ensuring full 360° pan and 90° tilt coverage.

Cutting edge design enables the CMOR® IR Dome to be extremely energy efficient whilst significantly reducing light pollution.

The amount of light directed to the scene being viewed would require a large amount of lighting using the old 'flood' approach.

This means that not only is the picture and range much improved, but the CMOR® IR Dome is greener too, using up to fifty times less energy than alternative solutions.

- Night-time Vision
- Superior night-time target identification
- Fast, Smooth Movement
- Auto Baud, Protocol and Address
- Manufactured in the UK

Order Codes

Vi-D436	36:1 zoom, 830nm IR Dome, 24V AC/DC
Vi-PSU1B	CMOR Dome Power Supply, IP66, 24VDC
Vi-AL1A	16-input alarm module
Vi-B2	Wall bracket and 3m cable
Vi-B3	Pendant mount (380mm) with 4m cable
Vi-B4	Swan neck mount with 4m cable
Vi-B5	Corner adaptor for wall bracket
Vi-B6	Pole adaptor
Vi-B9	Sun and rain visor. Reduces glare and effects of heavy rain
Vi-CAB1/10M	10m cable for wall bracket
Vi-CAB2/10M	10m cable for swan-neck/pendant

Specifications

Camera

Sensor	Sony Colour/monochrome Ex-View HAD 1/4" CCD PAL, 440,000 pixels
Colour sensitivity	0.1lux (recommended 100 to 100,000 lux)
Monochrome sensitivity	0.01lux
Optical zoom	x36
Resolution	550TVL
Angle of view (horiz)	57.8° - 1.7°
Focal length	3.4 - 122mm
Aperture	F1.6 - F4.5
Digital zoom	12x
Other features	Backlight compensation, 3D noise reduction, wide dynamic range, image stabiliser

IR Illumination

IR Control	Light sensing, schedule timer, manual
IR wavelength options	830nm (semi covert)
Night time coverage	160m diameter

Mechanics

Pan speed	0.02 to 360°/sec
Tilt speed	0.02 to 200°/sec
Pan angle	360° continuous pan rotation
Pan limits	a left and right limit may be programmed
Tilt angle	+5 to -90°
Pan/Tilt to zoom ratio	Menu programmable relation between zoom and rate

Physical and Environmental

Material	Vandal resistant cast aluminium dome and polycarbonate hemisphere
Operating temperature	-35°C to 50°C
Environmental	IP66
Finish	Grey (RAL 7035), black and other colours on request
Dimensions	190mm hemisphere diameter, 260mm high, 250mm max width (including IR lamps)

Telemetry

Auto protocol sensing	Yes
RS485 protocols	Videoswitch VXP4, PelcoD, PelcoP, Vista, auto-sensing
Addressing	1 to 255, auto-sensing, confirmed via menu
Baud rate	9600, 4800 or 2400 baud, auto-sensing
RS485 Termination	Set via menu
Coax telemetry	BBV compatible (auto sensing)

Features

Menu	Easy-to-use on-screen menu
Dynamic privacy zones	30 zones, smooth movement
Presets	255, auto-set mode for easy setting of multiple presets
Tours	16 tours, up to 64 presets each
Tour schedule	A different tour (or preset) may be set for each hour of day
Dwell and Speed	Independent dwell time and speed on each preset position
Preset resolution	0.02°
Camera/Preset titles	16 alphanumeric characters
Video launch amplifier	Gain 8 steps, HF Lift 8 steps, menu controlled
Password Protection	Yes, 3 levels
Photocell	Inbuilt
Fan	Yes
Heater	Yes
Quick mount/release	The dome hooks safely onto the mount without the need of a safety wire; secured using a hand-operated tightening wheel
Origin	Manufactured in the UK

Power

Power requirement	24V DC @2.5A or 24V AC @ 2.5A
-------------------	-------------------------------

Options

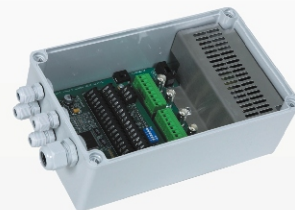
Alarm Module	16 alarm inputs, alarm relay output, fits in power supply
Power supply	240Vac in, 24V DC @2.5Amps out, 142 x 232 x 95mm
Mounting brackets	Wall, corner, pole, swan-neck, pendant, custom

Due to a policy of continuous product development, specifications may change without notice

CMOR Vi-D436

Accessories

Vi-PSU1 Power Supply
(shown with Vi-AL1 Alarm module fitted)



Vi-B2 Wall mount bracket



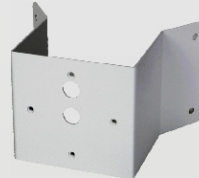
Vi-B3 Pendant mount



Vi-B4 Swan neck mount



Vi-B5 Corner adaptor



Vi-B6 Pole mount adaptor



www.videoswitch.co.uk

Videoswitch, Ocean House, Redfields Industrial Park, Redfields Lane, Church Crookham, Hants GU52 0RD
Email: sales@videoswitch.co.uk Tel: 01252-851510 Fax: 01252-851296



Key Features

- x28 Zoom
- High power White Light LED lamps for 80 metre diameter Colour Vision coverage in complete darkness
- High Resolution 550TVL Sony Camera
- 3D Noise Reduction
- Wide Dynamic Range
- Image Stabilizer
- High Sensitivity Camera
- Fast, Smooth and Super Reliable Stepper Motor Drive
- Automatic Protocol Detection
- Automatic Baud Rate Detection
- Automatic Camera Address Detection
- No DIP Switches to Set
- 255 Presets, 16 Tours, 30 Privacy Masks
- Advanced Electronics and Software
- Enhanced Preset Programming
- Auto Preset Learning Mode
- Auto Tour Learning Mode
- Multiple Tour Scheduling
- Easy Tour Editing
- Super-smooth Privacy Masks
- Easy-to-use Menu Structure
- AC or DC power
- IP66 Power Supply
- Mounting options include Wall, Corner, Pole, Swan-Neck, Pendant, Custom
- Sun and Rain Visor Option
- 16-input Alarm Option

Overview

The CMOR D4 White Light Dome features super-reliable stepper motor drive, new high resolution camera and high-power white-light LED lamps that focus light wherever the camera is directed. Now in its fourth generation, the proven CMOR design provides reliability together with smooth, fast movement and clear colour images, day and night.

The innovative CMOR® design provides up to 200m diameter viewing in complete darkness. The highly efficient and focussed IR lamps track the dome movement ensuring full 360° pan and 90° tilt coverage.

The innovative CMOR® design provides up to 80m diameter viewing in complete darkness. The highly efficient and focussed white-light LED lamps track the dome movement ensuring full 360° pan and 90° tilt coverage.

Cutting edge design enables the CMOR® White-Light Dome to be extremely energy efficient whilst significantly reducing light pollution.

The amount of light directed to the scene being viewed would require huge amounts of lighting using the old 'flood' approach.

This means that not only is the picture and range much improved, but the CMOR® White-Light Dome is greener too, using up to fifty times less energy than alternative solutions.

- Colour Vision
- Superior night-time target identification
- Fast, Smooth Movement
- Auto Baud, Protocol and Address
- Manufactured in the UK

Order Codes

Vi-D328W	28:1 zoom, White-Light Dome 24V AC/DC
Vi-PSU1B	CMOR Dome Power Supply, IP66, 24VDC
Vi-AL1A	16-input alarm module
Vi-B2	Wall bracket and 3m cable
Vi-B3	Pendant mount (380mm) with 4m cable
Vi-B4	Swan neck mount with 4m cable
Vi-B5	Corner adaptor for wall bracket
Vi-B6	Pole adaptor
Vi-B9	Sun and rain visor. Reduces glare and effects of heavy rain
Vi-CAB1/10M	10m cable for wall bracket
Vi-CAB2/10M	10m cable for swan-neck/pendant

Specifications

Camera

Sensor	Sony Colour/monochrome Ex-View HAD 1/4" CCD PAL, 440,000 pixels
Colour sensitivity	0.1lux (recommended 100 to 100,000 lux)
Monochrome sensitivity	0.01lux
Optical zoom	x28
Resolution	550TVL
Angle of view	55.8°-2.1° (horizontal)
Focal length	3.5 - 98mm
Aperture	F1.35 - F3.7
Digital zoom	12x
Other features	Backlight compensation, 3D noise reduction, wide dynamic range, image stabiliser

White Light Illumination

Lamp Control	Light sensing, schedule timer, manual
Night time coverage	80m diameter
No-light zones	Programmable zones where light is always switched off

Mechanics

Pan speed	0.02 to 360°/sec
Tilt speed	0.02 to 200°/sec
Pan angle	360° continuous pan rotation
Pan limits	a left and right limit may be programmed
Tilt angle	+5 to -90°
Pan/Tilt to zoom ratio	Menu programmable relation between zoom and rate

Physical and Environmental

Material	Vandal resistant cast aluminium dome and polycarbonate hemisphere
Operating temperature	-35°C to 50°C
Environmental	IP66
Finish	Grey (RAL 7035), black and other colours on request
Dimensions	190mm hemisphere diameter, 260mm high, 250mm max width (including IR lamps)

Telemetry

Auto protocol sensing	Yes
RS485 protocols	Videoswitch VXP4, PelcoD, PelcoP, Vista, auto-sensing
Addressing	1 to 255, auto-sensing, confirmed via menu
Baud rate	9600, 4800 or 2400 baud, auto-sensing
RS485 Termination	Set via menu
Coax telemetry	BBV compatible (auto sensing)

Features

Menu	Easy-to-use on-screen menu
Dynamic privacy zones	30 zones, smooth movement
Presets	255, auto-set mode for easy setting of multiple presets
Tours	16 tours, up to 64 presets each
Tour schedule	A different tour (or preset) may be set for each hour of day
Dwell and Speed	Independent dwell time and speed on each preset position
Preset resolution	0.02°
Camera/Preset titles	16 alphanumeric characters
Video launch amplifier	Gain 8 steps, HF Lift 8 steps, menu controlled
Password Protection	Yes, 3 levels
Photocell	Inbuilt
Fan	Yes
Heater	Yes
Quick mount/release	The dome hooks safely onto the mount without the need of a safety wire; secured using a hand-operated tightening wheel
Origin	Manufactured in the UK

Power

Power requirement	24V DC @2.5A or 24V AC @ 2.5A
-------------------	-------------------------------

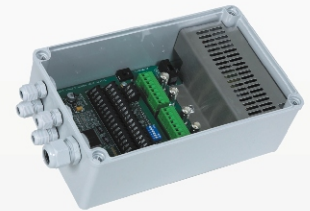
Options

Alarm Module	16 alarm inputs, alarm relay output, fits in power supply
Power supply	240Vac in, 24V DC @2.5Amps out, 142 x 232 x 95mm
Mounting brackets	Wall, corner, pole, swan-neck, pendant, custom

CMOR Vi-D428W

Accessories

Vi-PSU1 Power Supply
(shown with Vi-AL1 Alarm module fitted)



Vi-B2 Wall mount bracket



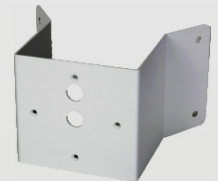
Vi-B3 Pendant mount



Vi-B4 Swan neck mount



Vi-B5 Corner adaptor



Vi-B6 Pole mount adaptor



Due to a policy of continuous product development, specifications may change without notice

www.videoswitch.co.uk

Videoswitch, Ocean House, Redfields Industrial Park, Redfields Lane, Church Crookham, Hants GU52 0RD
Email: sales@videoswitch.co.uk Tel: 01252-851510 Fax: 01252-851296