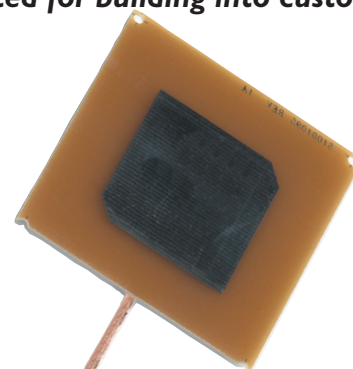


The T-2490x features an incredible 800mW of RF power, packed into the smallest design ever created for 2.4GHz transmission. Weighing just over 45g (antenna excluded), this little powerhouse was intended for long-range transmission or punching through multiple walls. With standard features including four user selectable channels and audio line level input, this unit is perfectly suited for building into custom mini camera housings and applications where only battery use is possible.

FEATURES

- Four user selectable channels
- Easy to use – plug and play
- Eliminates the need for cabling or trenching
- Video Transmitter and Receiver included
- 800mW of RF power
- Smallest configuration only 45g
- One year limited warranty



KIT INCLUDES

- T-2490 Super Power Transmitter
- RCV-2400sc Receiver
- Directional Patch Antenna
- Rubber Duck Antenna
- Two 12 VDC Power Supplies
- AA Battery Pack Holder

SPECIFICATION	DETAILS
User Selectable Channels	2.4108 to 2.4728GHz – Four Channels
Radiated Power	800mW
Operating Distance	Up to 1.5 Miles Line of Sight
Video Format	NTSC or PAL
Antenna Type	2.13" x 5.25" Directional Patch – SMA Male Connector
Connector Formats	Antenna Input Connector: SMA Female Video: RCA Male Audio: RCA Male
Video Impedance & Level	75 Ohms @ 1 Volt Peak to Peak
Audio Impedance & Level	600 Ohms @ 1 Volt Peak to Peak
Temperature Range	-30°C to 60°C or -22°F to 140°F
Weather Proof	No
Operating Voltage	6-12 Volt DC
Current Consumption	400mA @ 6 Volts DC Regulated
Dimensions	1.0" x 2.5" x 0.25" (not including antenna)
Weight	45g or 1.6oz (not including antenna)