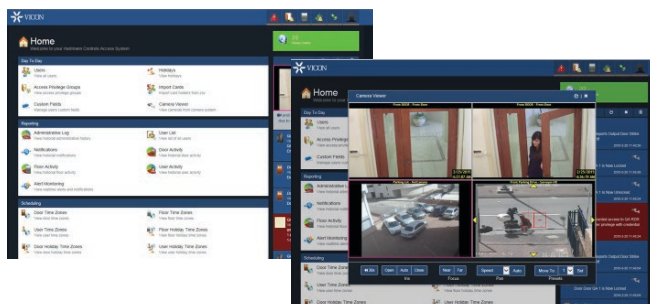


VICON ACCESS CONTROL



Vicon Access Control Provides:

- Simple and Intuitive Access Control System
- Full Video Interface
- Identity Management and Photo Identification
- Event and Alarm Monitoring
- Alarm Panel Integration Option
- Historical Reporting

Vicon Access Control is a full-featured credential-based system running on a TCP/IP network. It can be accessed and controlled by a standard web browser on a local or wide area network, the Internet or a wireless network. No software installation is required to access the system. It is fully compatible with ViconNet® Video Management System and combining the two provides a complete solution for access control and video surveillance applications from small systems to very large systems is thousands of access/monitoring points.

This Access Control on the Edge consists of dedicated Vicon Access Control Server and the edge Controller(s). The Server contains the operating system, database engine, web server, application software and configuration data. The Controller communicates back to the Server over the network and provides an interface to readers, relay outputs, door locks, etc.

A variety of software licensing options are available, including 1 or 5 years or perpetual for 40, 80, 120 or an unlimited number of doors.

- Fully distributed processing ensures operation even during network outages
- Smart responsive web-based user interface
- Fully integrated with ViconNet VMS enables call up of live or recorded video directly from the access system browser interface
- Access Controller with unique built-in Request to Exit (REX)
- Everything is connected to a standard TCP/IP network ensuring ease of installation and expansion
- Unlimited doors, users and door time zones
- Utilizes SQL database for reliable and robust data storage
- Advanced SSL encryption ensures system security
- Assign multiple cards or PINs to each user
- Manage unlimited sites across multiple time zones
- Remote firmware upgradable
- Power-over-Ethernet (PoE)

System Features

- Unlimited Access Privilege Groups
- Unlimited Administrators; Role-Based Administrator Security
- Unlimited System Users
- Daylight Saving Time
- Multiple Supported Card Formats
- Unlimited Access Privileges
- Unlimited Cardholders
- Control Remote Sites Via One Server; Unlimited Remote Buildings
- Real-Time Notification and Status
- Unlimited Customizable User Fields
- Security Level Lockdown

Controller Hardware

Processor:	32-bit microprocessor based
Power:	Supply: 802.3af PoE/PoE+ (provides up to 20 W) Lock: Solid state 12 VDC, 500 mA/24 VDC, 250 mA (with optional converter) Auxiliary Output: 12 VDC 200 mA
Network:	Speed: 10/100 Mbps Modes: Static or DHCP MAC: Unique
I/O:	Lock Relay: 1x wet contact solid state Auxiliary Relays: 2x dry contract solid state (24 VDC, 500 mA limit) Inputs: 4x supervisor or digital (REX, door contact, HDCC opener, auxiliary)
Readers:	Reader Port: 2x Wiegand (D0, D1, BUZ, LED, VCC, GND)
User Interface:	LEDs: 2x power indicator; 2x reader data flow indicator; 3x relay status indicator; 2x Ethernet status indicator; 2x on-board info; 2x off-board info (PIR) LCD Display: 1x 16 channel; 2-line LCD with backlight Push Buttons: 4x tactile switch Sound: 1x 90 db Piezo
Integrated Motion:	Passive PIRs: 5.0 m detection performance 94° (H)/82° (V) detection area 64 detection zones 170 uA consumption Tricolor LED (red, green, orange)
Protection:	PoE: in-rush current limit/overall current limit Over-Current: Strike, relays, 12 VDC output Surge: Strike, readers, inputs Tamper: Photo tamper sensor
Time Keeping:	Date/Time: 1x on-board real-time clock (no battery required, maintains up to 1 month)
Memory:	Flash Memory: 8.0 Mb
Housing and Back Plate:	Molded ABS plastic; removable cover for quick access; flat surface monut back plate with cabling port
Options:	Loud Buzzer: 100 db at 3 ft (100 cm) 24 VDC Converter: converts 12 VDC to 24 VDC Dry Contact Converter: converts wet to dry contact Expansion Port: supports WiFi, serial, extra memory, I/Os for future expansion

Data Sheet Number: V274
Dated: 4/2015

Vicon Data Sheet Part Number: 8009-7274-00-01
Specifications subject to change without notice.

Functions and Features

Door Time Zones:	Unlimited number of schedules the system will support. Used to program when doors unlock and what time cards are granted access via locked door.
User Time Zones:	Maximum of 256 schedules the system will support. Used to program when doors unlock and what time cards are granted access via locked door.
Holidays:	50 holiday user groups; 50 holidays per group
Zones:	20 door time zones a day; 4 user time zones per day; 2 door holiday time zones per day; 2 user holiday time zones per day
Special Event Time Zones:	32; program doors to follow unique schedules on special dates
Event Storage:	10,000
Reader Technologies:	Supports proximity, biometrics, Wiegand, mag stripe and bar code reader technologies
Card Holder List:	Supports up to 100,000 cardholder records
PIN Number:	Supports 3 - 7 digits; five consecutive incorrect PIN entries blocks PIN input for 30 sec with buzzer warning
Input Port:	Fully Configurable; Request to Exit, door contact, handicap open, motion, aux input, fire alarm
Output Port:	Fully Configurable; door strike, door opener, external buzzer, alarm interface, aux output

Models and Descriptions

Description	Model Number
SINGLE DOOR CONTROLLER; integrated PIR/REX including two Prox3 readers; black enclosure	VAX-1D2R-REX
SINGLE DOOR CONTROLLER; integrated PIR/REX including one Prox3 reader; black enclosure	VAX-1D1R-REX
SINGLE DOOR CONTROLLER; integrated PIR/REX; no readers; black enclosure	VAX-1D-REX
TWO DOOR CONTROLLER; integrated PIR/REX including two Prox3 readers; black enclosure	VAX-2D2R-REX
TWO DOOR CONTROLLER; integrated PIR/REX; no readers; black enclosure	VAX-2D-REX
BACKING PLATE; for mounting on concrete walls	VAX-BK-BOX
Converts controller to wireless network	VAX-WIFI-ABLY
ELEVATOR CONTROLLER; includes 8 floor modules	VAX-ELV-ENC8
8 floor expander for elevator controller	VAX-ELV-EXP8
16 floor expander for elevator controller	VAX-ELV-EXP16
8 floor expander for elevator controller; no enclosure	VAX-ELV-EXP8-PCB
Module to convert lock 12 VDC output to dry contact output	VAX-MOD-DRY
Module to convert lock power from 12 VDC 500 mA to 24 VDC 250 mA	VAX-MOD-24
Sounder; provides 100 db	VAX-PIEZO

Vicon and their logos are registered trademarks of Vicon Industries Inc.
Microsoft and Windows are registered trademarks of Microsoft Corporation.
Copyright © 2015 Vicon Industries Inc. All rights reserved.