

# Roughneck V910

IP Camera Dome Series



- State-of-the-art IP Camera Dome transmits high quality video across the network for remote viewing and recording
- Powered by ViconNet version 3 software
- Maximum video transmission rate of 30 fps (25 fps PAL) at 720 x 488 pixels (4 CIF) (864 x 586 PAL)
- Uses optimized proprietary compression based on MPEG4 that maximizes data size and picture quality
- Simultaneous transmission of multiple channel video across the LAN and WAN (Internet) to connected Kollector Elite recorders and ViconNet NVRs
- Can be remotely configured from Kollector Elite recorders and ViconNet NVR workstations

The Roughneck IP Series of Impact-Resistant Camera Domes is a powerful IP video source for a complete digital video management system based on ViconNet software platform. It is fully compatible with all ViconNet systems and is remotely managed and controlled from ViconNet NVR workstations and Kollector Elite recorders. It can deliver up to 30 fps at a total nominal bandwidth of 1.7 Mbps at Q5 (360 x 244 pixels).

Equipped with a 100 Mbps LAN interface board, the camera allows direct plug-in to a network switch. Images received from the IP camera and the other external cameras connected to its external inputs can be displayed, recorded or archived like any other ViconNet video component using the ViconNet management platform.

The Roughneck IP Camera Dome provides up to 4 CIF resolution (720 x 488) at 2 levels of compression, Normal (optimized) MPEG4 and Full (JPEG). ViconNet utilizes an MD5 video authentication algorithm used to identify data integrity. In addition, video from the IP Roughneck supports museum search, motion detection, alarm reporting, macros and alarm configuration through the ViconNet software interface.

The Roughneck offers high-security cameras in a compact domed housing. They are available for indoor/outdoor applications. Tamper-resistant screws make the unit resistant to vandalism. The Roughneck V910 series has an integral camera with an isolated power input, high-resolution color or day/night, with a choice of lenses. The camera accepts 24 VAC and also features line lock capability. The camera mount offers adjustment to any view required. A heater and smoked polycarbonate lower dome are included.

**World Headquarters**  
Hauppauge, New York  
631-952-CCTV (2288)  
800-645-9116

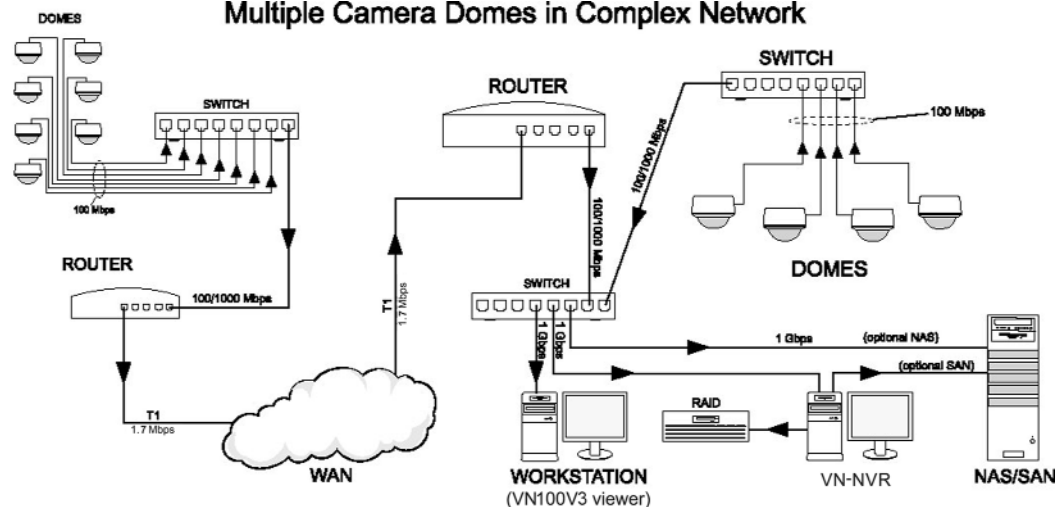
**European Headquarters**  
Fareham, PO 15 5TX  
United Kingdom  
+44 (0) 1489 566300

**Brussels Office**  
Zaventem  
Belgium  
+32 (2) 712 8780

**Hong Kong Office**  
Shatin  
New Territories  
852-2145-7118



## Multiple Camera Domes in Complex Network



- Number of IP cameras - Multiple on multiple sites
- Network bandwidth - Each switch to its limit (as shown above), constrained only by the WAN (T1 @ 1.7 Mbps)
- Storage method - Local workstation hard drive, SCSI attached RAID or NAS/SAN storage
- In the basic configuration, workstation recording capability is approximately 25 cameras

Model Number	Product Code	Nominal Bandwidth (Mbps)	Video Transmission Rate (fps)	Capture Resolution	Camera/Lens	Housing Types
V910-W3312V3/-C	8759-25/-26	1.7 per video stream	1 channel @ 30 fps	480 horizontal	Color or Day/Night	Outdoor
V910-W3312DNV3/-C	8760-25/-26	(max 10 streams per dome)	(25 fps, PAL)(max).	TV lines max @	Varifocal or	Ceiling, Wall,
V910-28V3/-C	8456-25/-26			720 x 488 (4 CIF)	Fixed-Focal-Length with autoiris	Surface Mount, In-Ceiling

## Technical Information

### ELECTRICAL

Input Voltage: 24 VAC  $\pm$ 20%, isolated.  
Current: Nominal: 0.8 A.  
Max: 0.9 A.  
Power Consumption: Nominal: 19.2 W, including heater.  
Max: 26.1 W, including heater.  
Vicon Power Supplies: V248-600PS.

### VICONNET (IP)

Communication Hardware: ViconNet Digital Video Management System.  
LAN Interface: 100 MBPS, TCP/IP Unicast.  
Number of Channels: 1, over LAN connection.  
Video Quality: ViconNet software quality 1-4, selectable on a 4-position bar with 2 compression level settings.

### OPERATIONAL

Tilt and Horizontal Adjustment: 3-axis adjustment, pan, tilt and roll.

### VIDEO CHARACTERISTICS

Image Device: Color: 1/3-inch ExView™ interline transfer CCD. Day/Night: 1/4-inch interline transfer CCD.  
Synchronization In: Internal/Line-locking with vertical phase.  
Gain Control: Automatic (AGC), ON/OFF.  
Backlight Compensation: ON/OFF select.  
Electronic Iris: 1/60 (1/50)-1/100,000.  
ALC (AI)/ELC (EE) select.  
Lenses: 3.3-12 mm varifocal or 2.8 mm fixed-focal-length with autoiris.

### SOFTWARE

Network Setup: Standard network protocol type using IP addressing scheme and separate PC application software.  
Site Authorization: Camera dome can be setup using remote recorder or workstation.  
Macro Create & Edit: System macros can configured to use the dome's video.  
Alarm Setup: Can be triggered on video motion detection and loss.  
Authentication: Can be set to view the symbol A on displayed video.  
Picture Quality and FPS Priority: Can prioritize recorded picture quality and video FPS.

### MECHANICAL

Dimensions: Diameter: 6.1 in. (155 mm).  
Height: 5.1 in. (130 mm).

### ENVIRONMENTAL

Operating Temperature: Outdoor: -22 to 140°F (-30 to 60°C), with heater.  
Wind Load: Heavy rain or snow driven by winds up to 80 mph.