



PRODUCT SPECIFICATION

MODEL: V8ACM

PRODUCT CODE: 2698

DESCRIPTION: LIGHT-DUTY INDOOR CEILING MOUNT

Model V8ACM Light-Duty Ceiling Mount is designed to support camera/housing combinations weighing up to 20 pounds (9.1 kg). This mount includes an adjustable head which allows for full 360-degree rotation and varying tilt angles. It is specially designed to conceal the cables by routing them through the mount.

NOTES	SPEC NO.	REV.	SEC.
SUPERSEDES PRODUCT SPECIFICATION 132-287	132	589	7



V8ACM CEILING MOUNT

TECHNICAL INFORMATION

MECHANICAL

Mounting	Ceiling.
Angular Movement;	Vertical; $\pm 90^\circ$ Horizontal; 360°
Application:	Indoor.
Load Rating:	20 lb (9.1 kg).
Dimensions:	See Figure 1.
Weight:	1.1 lb (0.5kg).
Construction:	Die-cast aluminum.
Finish:	Silver
Shipping Dimensions:	Height; 4.25 in. (10.8 cm) Width; 4.5 in. (11cm). Depth; 9.25 in. (23.5 cm).
Shipping Weight:	1.5 lb (0.7 kg).

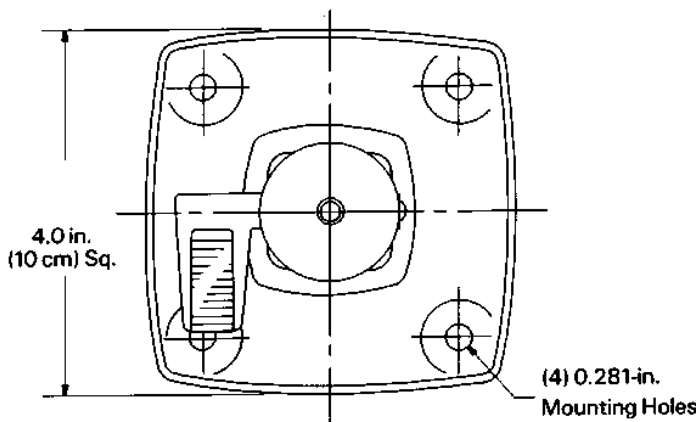
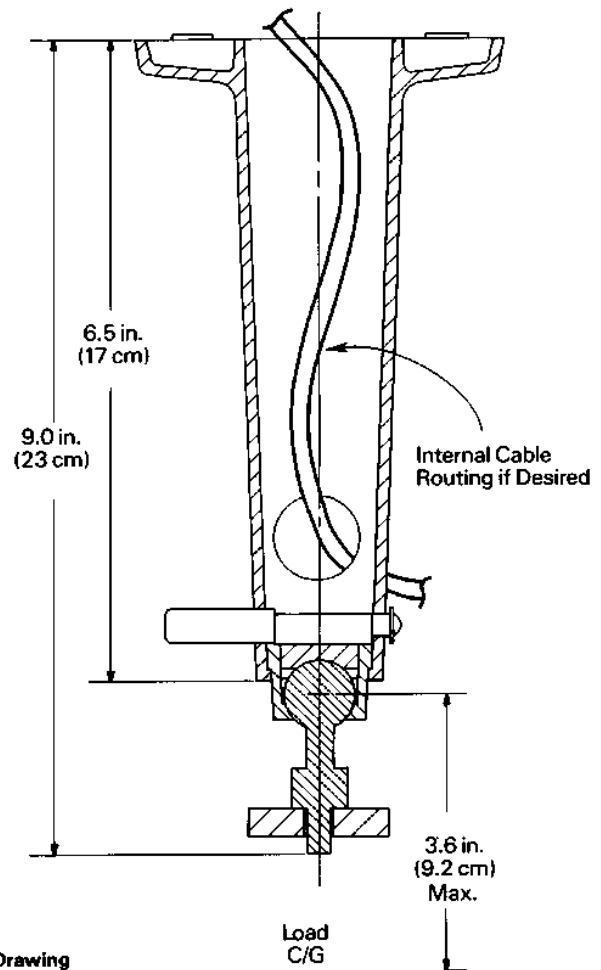


Figure 1
V8ACM Outline Drawing



Product specifications subject to change without notice.
Copyright © 1998 Vicon Industries Inc. All rights reserved.

Vicon's Part Number: 8006-7132-00-00

Vicon and its logo are registered trademarks of Vicon Industries Inc.