



### V2420Series Explosionproof Pan-and-Tilt and Housing

- Fully integrated pan-and-tilt, camera housing, telemetry receiver
- Constructed entirely of 316L stainless steel
- Explosionproof (EExd) for use in ATEX designated hazardous areas (offshore, marine and industrial environments)
- Certified for use in Zone 1 and Zone 2, Category 2G (Gas) and Zone 21 and 22, Category 2D (Dust), Group IIC T Class 4 to 6
- All wiring is internal
- Includes preset potentiometers
- 24 VDC variable speed motor or 24 VAC fixed speed motor
- Standalone camera housing available
- Integrated window heater, demister, sunshield and washer/wiper

The Vicon V2420 Explosionproof Series has been developed for use in ATEX designated hazardous areas in offshore marine and industrial environments. The V2420 is constructed entirely from electro polished 316L stainless steel, providing low maintenance and protection from corrosion.

The pan-and-tilt is designed for easy installation and maintenance. Integral cabling from its base to the camera housing presents a neat and uncluttered appearance.

The pan-and-tilt is available with a 24 VDC variable speed or 24 VAC fixed speed motors and preset potentiometers and can be supplied with a factory-fitted cable assembly for connection to external customer supplied or specified receiver, which provides for pan and tilt motor drive, lens zoom and focus control and also provides switching for the integral window washer pump and wiper.

The unit is fitted with an integral thermostatically-controlled heater and de-mister. The integral sunshield protects the housing from high temperatures caused by direct sunlight, with compensation for cold temperatures achieved via the integral thermostatically-controlled heater element. The unit is also available as a standalone camera housing.

The camera housing is designed to accommodate a range of CCD camera/lens configurations for both fixed and zoom lens applications. A range of camera/lens modules, from 18X to 43X, are available.



ATEX Certified  
Category II 2 G  
EExd IIC T5/T6

Model Number	Description
V2420-FSW	Stainless steel 316L EEXD IIC integrated fixed-speed (6°/sec pan, 3°/sec tilt) pan-and-tilt with integrated housing, integral window wiper and washer pump, heater and sunshield
V2420-VSW	Stainless steel 316L EEXD IIC integrated variable-speed (32°/sec pan, 16°/sec tilt) pan-and-tilt with integrated housing, integral window wiper and washer pump, heater and sunshield
V2410H	Stainless steel 316L standalone camera housing with integral window wiper and washer pump, 24 VAC heater and sunshield
V2420-FS	Stainless steel 316L EEXD IIC integrated fixed-speed (6°/sec pan, 3°/sec tilt) pan-and-tilt with integrated housing, integral heater and sunshield
V2420-VS	Stainless steel 316L EEXD IIC integrated variable-speed (24°/sec pan, 12°/sec tilt) pan-and-tilt with integrated housing, integral, heater and sunshield

## Technical Information

### ELECTRICAL

- Input Voltage:** 24 VAC, 50/60 Hz (optional factory-fitted 110/220 VAC step down transformer in base).
- Maximum Current:** 2.5 A.
- Power Consumption:** 60 W.
- Connectors:** M25 EExd barrier gland entry at base; factory-installed cable/conduit.

### OPERATIONAL

- Pan View:** +180°/-180° max, adjustable.
- Tilt View:** +90°/-90° max from horizon, adjustable.
- Pan Speed:** Fixed: 6°/sec, nominal.  
Variable: 0 to 32°/sec.
- Tilt Speed:** Fixed: 3°/sec, nominal.  
Variable: 16°/sec, nominal.
- Presets:** Potentiometers standard.
- Limit Stops:** User adjustable, mechanical and/or electronic.
- Braking:** Mechanical and/or electromagnetic.

### RECEIVER

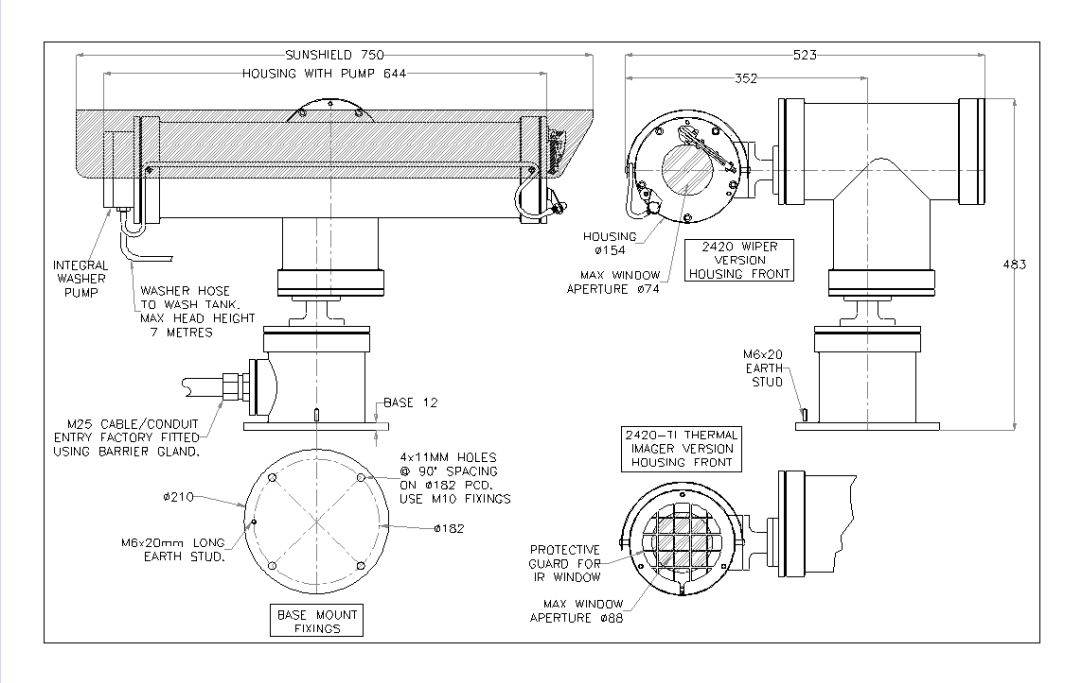
- Motor Drive:** 24 VAC fixed speed or 0 to 24 VDC variable speed.
- Lens Control:** Standard ¼ wire zoom lens drive or Sony Visca control for zoom module cameras.
- Presets:** 32 preset positions standard.
- Auxiliary Relays:** 2 x 24 VAC auxiliary relays for washer/wiper.
- Communication:** RS-422/RS485.
- Protocols:** Vicon; other select manufacturers upon request.

### MECHANICAL

- Application:** Hazardous areas in offshore marine and industrial environments.
- Mounting:** 4 x M10 bolts on 182 mm PCD. Refer to diagram.
- Dimensions:** Refer to diagram.
- Weight:** 99.2 lb (45 kg) empty.
- Construction:** Stainless steel (AISI 316L).

### ENVIRONMENTAL

- Operating Temperature Range:** -4 to 140° F (-20 to 60° C)
- Temperature Rating:** -40 to 158° F (-40 to 70° C).
- Ingress Protection:** IP67.
- Approvals:** Hazard Area Rating: ATEX certified category II GD, EExd IIC T4-T6.  
Notified Body: Intertek Testing & Certification Ltd.  
ATEX Certification No.: Intertek ITS08ATEX1590X.  
CE: compliant to ATEX 94/9/EC.



Dimensional and Installation Diagram