



PRODUCT SPECIFICATION

MODEL: V2000WM

PRODUCT CODE: 1951

DESCRIPTION: MEDIUM-DUTY WALL MOUNT

The V2000WM Medium-Duty Outdoor Wall Mount is designed to support camera stations weighing up to a total of 35 pounds (16 kg), including pan and tilt or scanner, camera/lens system, and housing. Constructed of molded Lexan*, the V2000WM is suitable for outdoor applications. This Designer model accepts an optional adjustable head (Model V2400AH) which provides full 360-degree rotation and a maximum +60-degree tilt angle.

TECHNICAL INFORMATION

MECHANICAL

- Mounting: Wall.
- Type: Fixed.(Adjustable with V2400AH Adjustable Head.)
- Load Rating: 35 lb (16 kg)
- Application: Outdoor.
- Construction: Molded Lexan.
- Finish: Gray acrylic.
- Dimensions: See Figure 1.
- Weight: 7.2 lb (3.3 kg).
- Shipping Dimensions: Height; 6.9 in. (17.5 cm).
Width; 9.4 in. (23.9 cm).
Length; 30.9 in. (78.5 cm).
- Shipping Weight: 10.1 lb (4.6 kg).
- Shipping Weight: 1.2 ft³ (0.03 m³)

NOTES	SPEC NO.	REV.	SEC.
SUPERSEDES PRODUCT SPECIFICATION 314-786	399	189	7



V2000WM WALL MOUNT

ASSOCIATED EQUIPMENT AND ACCESSORIES

Model V2400AH Adjustable Head: For use with the V2000WM Wall Mount. Product Specification 515.

Model V2000S Support Strut: Provides additional support for the V2000WM Wall Mount. Product Code 1949.

Model V20A Pole Mounting Adapter: Accommodates pole diameters from 4 to 10 inches. Product Specification 532.

Model V2000CMB Corner Bracket: Allows corner mounting of the V2000WM Wall Mount. Product Code 1950.

Product specifications subject to change without notice.
Copyright © 1999 Vicon Industries Inc. All rights reserved.

Vicon Part Number 8006-7399-00-00
Vicon and its logo are registered trademarks of Vicon Industries Inc.

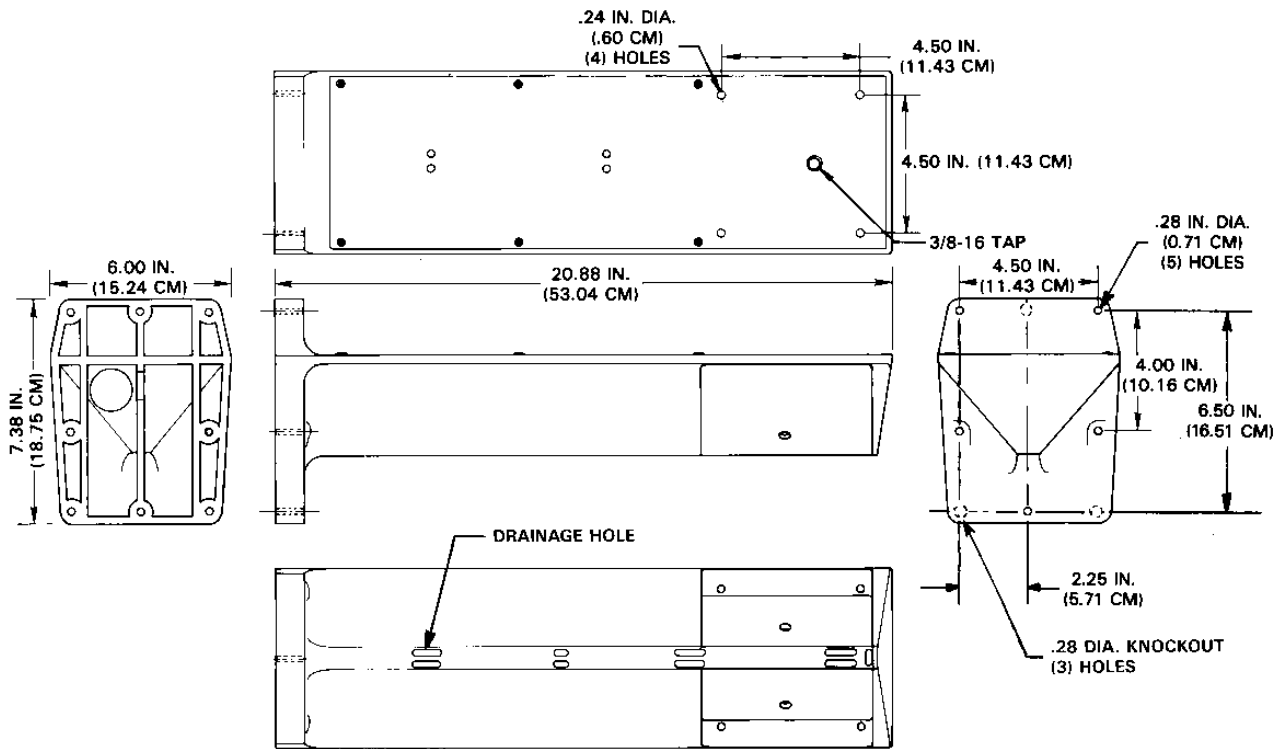


Figure 1
V2000WM Outline Drawing