

KOLLECTOR STRIKE 16-CHANNEL HYBRID DIGITAL VIDEO RECORDER



- Configured with ViconNet® Video Management Software (VMS)
- Scalable from one to hundreds of recorders
- Support for HD video and megapixel cameras
- Real-time Hybrid recording of up to 16 analog cameras and up to 8 additional IP cameras
- Support for third-party network cameras
- Embedded Windows® operating system for enhanced security and reliability
- M-JPEG, MPEG-4 and H.264 compression
- High-capacity internal storage
- Removable hard drive model option
- Solid-state drive option for operating system provides less power usage, faster data access, higher reliability
- Multi-language application
- Advanced video authentication
- Integration with third-party management software using software development kit (SDK)

The Kollektor® Strike combines a robust video management and storage solution that enables you to simultaneously capture, view and store high-quality, high resolution voice, video and data for a comprehensive security solution. The Strike helps security organizations reduce system ownership costs, streamline operations and deliver more effective security. Two models are offered: a removable hard drive model, which enables hot-swapping of drives on the fly, and the Strike Basic, which has internal hard drives.

The Strike has the power to bridge the transition from analog to IP camera installations. It can record 16 analog cameras and encode the analog inputs for use by the VMS. An additional 8 IP channels can also be recorded, and managed by the system, all with real-time frame rates at 4 CIF resolution.

Built for Reliability, Usability, and Low Cost of Ownership

Proven in daily operation in thousands of customer installations worldwide, the Strike features an embedded operating system designed for enhanced security and superior reliability. The ViconNet software, that powers the Strike, provides an open platform that allows integration with IP cameras, including megapixel cameras, encoders and IP edge devices from numerous industry-leading manufacturers.

Powerful Software

ViconNet software provides outstanding functionality and an intuitive interface for administrators, security managers and system operators anywhere on the network. Multi-site users, in particular, benefit from the efficiency of enterprise management options.

Scalability

A Kollektor SAN model is available that has external iSCSI RAID device connection capability to extend total recording time well beyond the limits of the internal storage. The system is designed to scale to thousands of cameras with additional Kollektor Strike models or any of the ViconNet VMS products. Add storage or additional capability as it's needed when it's needed.

Video Specifications

Video Level Input:	1.0 V peak-to-peak (140 IRE) nominal.
Luminance:	100 IRE +/- 15%.
Sync:	40 IRE +/- 15%.
Colorburst:	40 IRE +/- 15%.
Video Input Impedance:	75 ohms on BNC connectors.
Video Formats Supported:	NTSC, PAL, EIA and CCIR.
Video Recording Rate:	16 simultaneous channels @ 240 or 480 frames per second, maximum. 30 fps per channel, maximum.
Local Video Quality:	Local analog camera inputs: Selectable using a 4-position bar, from HCIF to 4 CIF. IP cameras: 10 user selectable resolution capture sizes (camera dependent).
Audio Inputs:	Microphone should be 0 dB, 32 KHz bandwidth, 600 ohm impedance, 2 V RMS (1 V p-p) output.
Audio Sampling Rate:	8 KHz/sec/channel.
Audio Data Storage Rate:	Approximately 0.7 GB/day/microphone.
Camera to Recorder Analog Input Video Transmission Distance (coaxial cable distance):	1000 ft (305 m) nominal.
Monitor Output:	SVGA, True-Color Mode with a resolution of 1024 x 768 or 1280 x 1024.
Display Modes:	Multi-screen display mode for both live and video playback of 1, 4, 6, 9, 16 cameras.
Panel Indicators:	1 blue power LED used for power status indication. 1 red LED used for HDD indication. 1 green LED used for DVD operation (not on Basic model).
Panel Key Lock:	Key lock provided on front panel to secure all controls.
Analog Video Inputs:	16 BNC-F connectors.
Monitor Output:	Two monitor outputs.
PTZ Control Ports:	Tx output terminal block.
Sensor Input Ports:	4 alarm inputs. Alarm input terminal block. Software selectable. Each alarm input is automatically configured as a normally opened (NO) or normally closed (NC) trigger.
Relay Control Ports:	4 relay control outputs. Terminal block used to connect external relay device.
Microphone Ports:	4 audio inputs. Terminal block used to connect microphones. 1 speaker output.

Electrical Specifications

Input Voltage:	115-230 ±10% VAC, 50/60 Hz.
Current:	Removable Drive Model: 1A @ 115 VAC; 0.5 A @ 230 VAC. Basic Model: 0.9 A @ 115 VAC; 0.45 A @ 230 VAC.
Power Consumption:	Removable Drive Model: 120 W nominal. Basic Model: 101 W nominal.
Heat Output:	Removable Drive Model: 420 btu/hour. Basic Model: 354 btu/hour.
Power Connector:	Standard 3-conductor female socket.
CPU:	Intel® Core™ i3.
Memory:	2 GB minimum.
OS:	Microsoft® Windows 7 Embedded.
OS Drive:	Separate SATA drive.
Storage:	1000 to 6000 GB, depending on model. Note that Vicon certifies DVR and NVR drives on a continual basis, therefore capacities will change frequently.
DVD Drive:	Internal DVD drive (not on Collector Strike Basic/SAN).
Network Port(s):	SAN Model: 2 RJ-45 jacks. Basic/Removable Drive: Single (1) RJ-45 jack. 100/1000 Mbps.
Monitor Port(s):	HDMI or DVI (converter to VGA provided); Display Port available.
Keyboard Port:	USB; PS2 port or USB on SAN.
Mouse Port:	USB; PS2 port or USB on SAN.
USB Ports:	8 (2 front, 6 rear); 6 (2 front, 4 rear) on SAN.
Certifications:	UL; CE; FCC, Class A.

Mechanical Specifications

Application:	Indoor
Mounting:	Standard 19 in. (483 mm) rack mount and stackable, 1U height, or desktop.
Dimensions:	Removable hard drive model: 1.75" (44.5 mm) H x 19" (483 mm) W x 23.1" (587.4 mm) D, including connectors. Basic/SAN model is 16" (406 mm) D, including connectors.
Weight:	Removable Drive Model: 24.0 lb (10.9 kg). Basic/SAN model: 17 lb (7.7 kg).
Construction:	Steel case and hardware.

Environmental Specifications

Operating Temperature:	32° to 104°F (0° to 40°C).
Humidity:	Up to 95% relative, non-condensing.
Storage Temperature Range:	-4 to 158° F (-20 to 70° C) maximum.

Warranty

3 years parts and labor.

Data Sheet Number: V112-32
Dated: 3/2014

Vicon Data Sheet Part Number: 8009-7112-32-03
Specifications subject to change without notice.

Vicon, Collector, ViconNet and their logos are registered trademarks of Vicon Industries Inc. Intel and Core are trademarks or registered trademarks of Intel Corporation. Microsoft and Windows are registered trademarks of Microsoft Corporation. Copyright © 2014 Vicon Industries Inc. All rights reserved.

The removable drive Strike and Strike Basic models provide the same functionality, but do have some variations in layout and feature set, in addition to the hard drive removability. A Kollector Strike SAN model is available for use with an external RAID unit and has a slightly different rear panel. All models have the same height and width; the removable drive unit is slightly larger in depth.

All Models:

- 16 analog video inputs
- USB connectors: front panel and rear panel
- Solid-state operating system drive (SSD) option frees up OS bay, thereby increasing local storage capability
- Sensor (4 alarm inputs), relay control (4 relay outputs), microphone (4 audio inputs, 1 speaker output) and PTZ terminal block connections
- Multiple monitor connections

SAN Model:

- Additional network port for external iSCSI network RAID drive connection
- RS-232 port

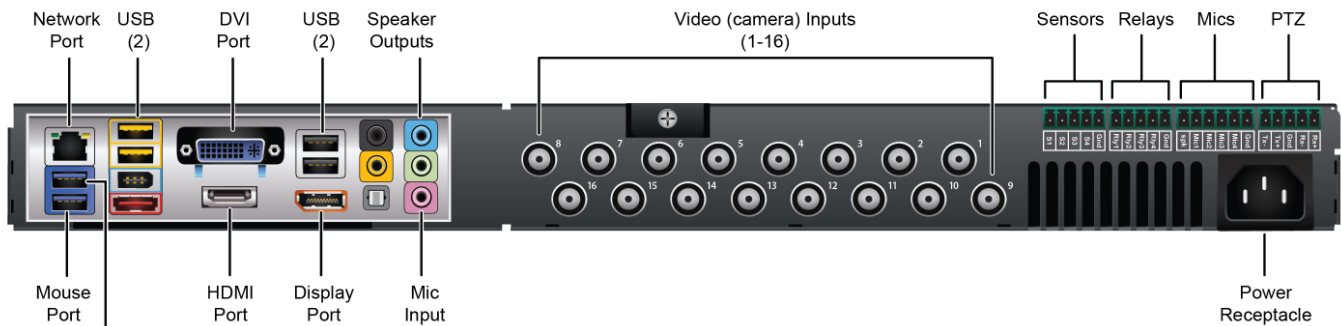
Removable Drives Model

- Internal DVD drive
- 2 storage drives; one bay for Operating System (OS) drive

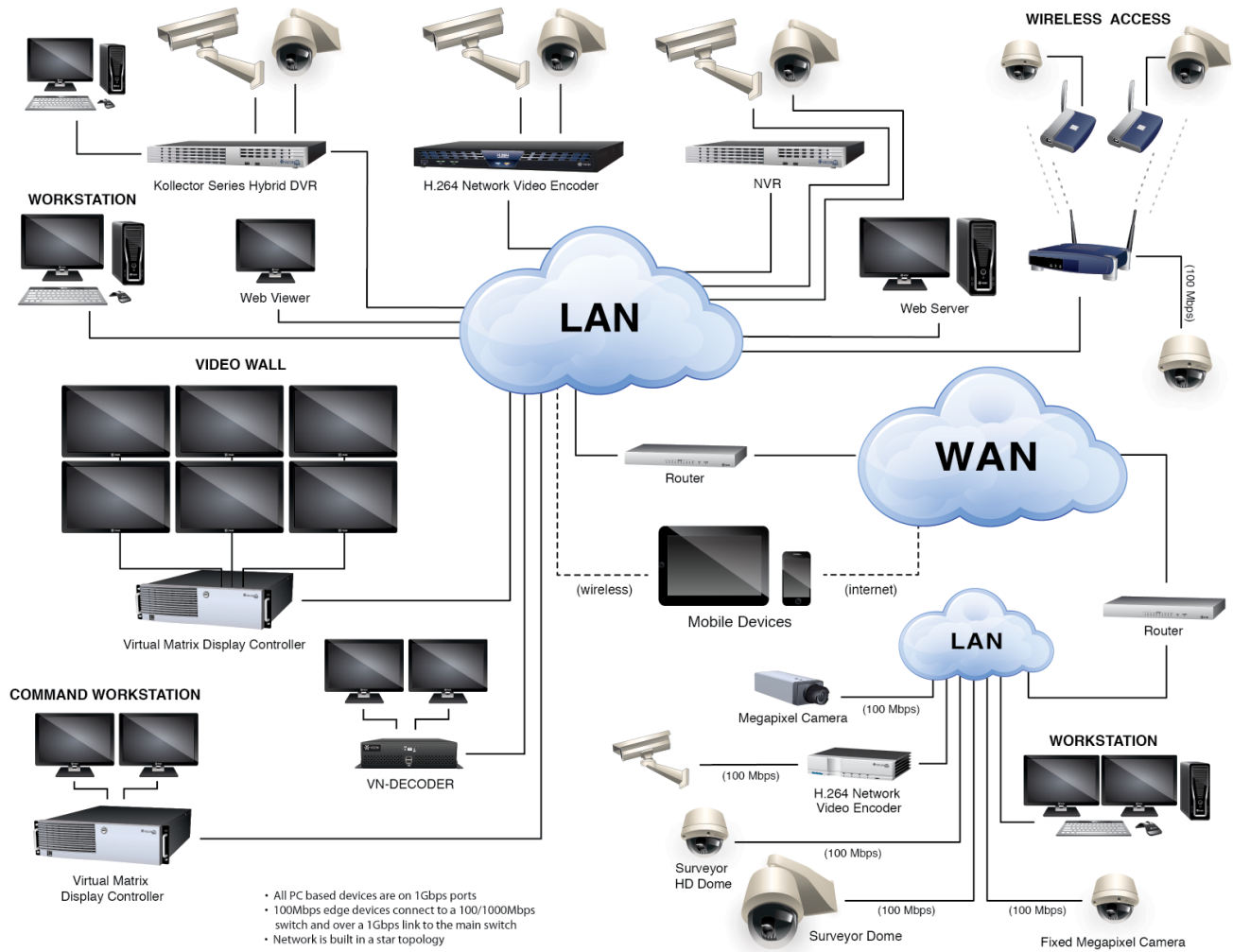
Strike Basic Model

- 1 storage drive; one bay for Operating System (OS) drive

Note that motherboards are subject to change and the current rear panel may differ slightly but will be similar. The Kollector Strike SAN version is similar, but has 2 RJ-45 connectors.



Kollector Strike Rear Panel





Typical ViconNet System Configuration with Kollector Strike DVR

All models are 16-channel, hybrid DVRs preloaded with ViconNet Version 6 software and 4-channel audio. All have user door with key lock.

Collector Strike Model	Chassis Type/ Rear Panel	HDD Sizes (GB)	SSD	fps at 4 CIF	Model Number
Strike with Removable Drives	Long Length/ 1 network port	1000, 2000, 3000, 4000, 5000, 6000	Available as option	240 @ ViconNet MPEG-4/120 @ H.264	KS2-(X)XXXV6
				480 @ ViconNet MPEG-4/240 @ H.264	KS3-(X)XXXV6
Strike Basic	Short Length/ 1 network port	1000, 2000, 3000	Standard	240 @ ViconNet MPEG-4/120 @ H.264	KS2B1-(X)XXXV6
				480 @ ViconNet MPEG-4/240 @ H.264	KS3B1-(X)XXXV6
Strike SAN	Short Length/ 2 network ports	No database drives	Standard	240 @ ViconNet MPEG-4/120 @ H.264; no internal hard drives for storage	KS2-SANV6-1*
				480 @ ViconNet MPEG-4/240 @ H.264; no internal hard drives for storage	KS3-SANV6-1*

* The "SAN" models are configured for use with external SAN-RAID storage. (X)XXX indicates the hard drive size in GB. For example, a 480 fps Collector Strike with removable hard drives and 1000 GB storage would have a model number of: KS3-1000V6. The same unit with 3000 GB storage would have a model of KS3-3000V6.

Options and Accessories

	Description	Model Number
	Network Control Keypad. Used to control ViconNet digital video management systems, including Virtual Matrix Display Controller (VMDC) over an IP network or serial connection.	V1500X-SCCS-1
	External Storage Options. Vicon offers a variety of external storage options using SAN and other technologies. Refer to the web site for more information. Collector Strike with removable drives model only.	VN-SAN series