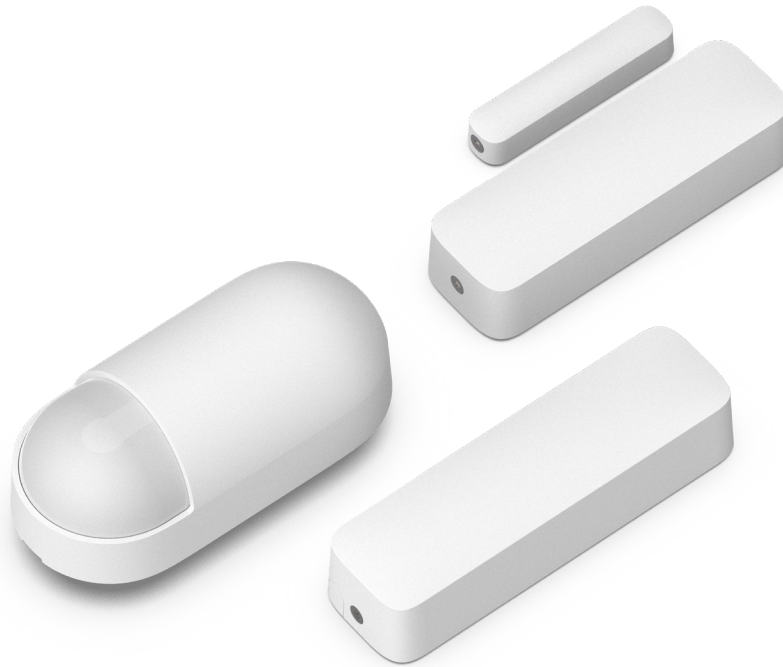


## Q Series

# Wireless Alarm Sensors

NEW ALARMS

V LINK



## Overview

The Q series is a suite of cloud-managed wireless alarm sensors designed for easy installation, easy servicing, and reliable performance. The series consists of a dual-tech door/window contact sensor, a dual-tech motion sensor, and a universal transmitter. For panic buttons and water leak sensors, please see the [BR series sensors](#). All Q series devices are compatible with any VLink hub in the new Alarms product line<sup>1</sup>, such as the BP32 panel, BK22 keypad, and WH52 wireless hub. VLink is Verkada's sub-GHz wireless protocol that optimizes for security, range, and sensor battery life.

## Key features

### Easy to install

- Wireless sensors automatically connect to the nearest VLink hub — no manual pairing process needed
- Sensors re-scan for the strongest hub every 30 min

### Cloud-managed

- Remote visibility of live and historical sensor activity and signal strength
- Mute a sensor, check battery level, and force a re-pair via Command
- One click to pair a context camera for video verification

### Built to last

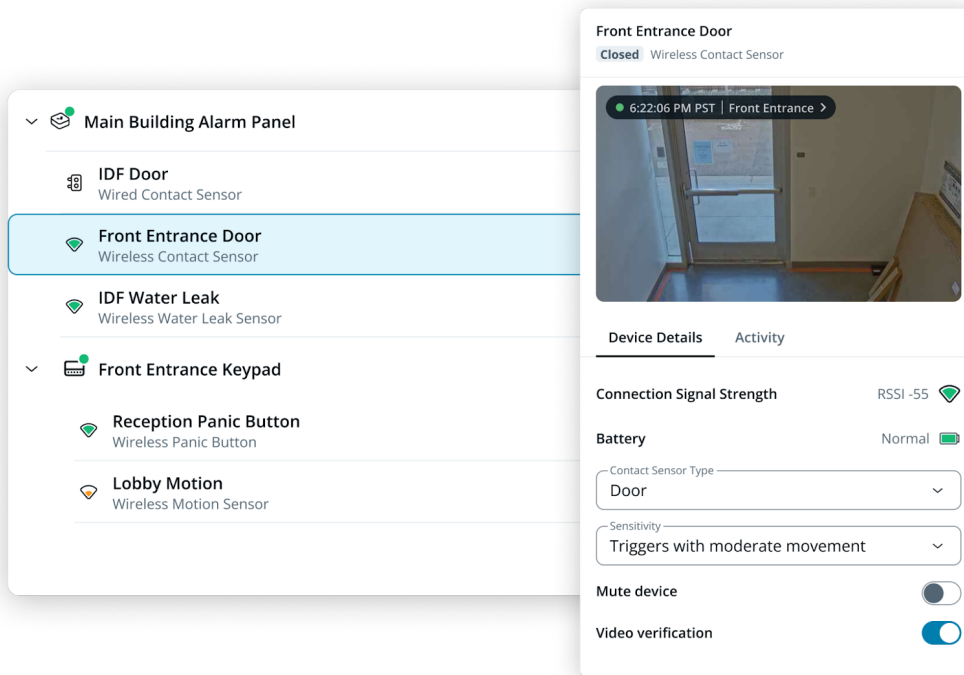
- 10-year warranty on all sensors
- Up to 10 years of battery life for universal transmitter and up to 5 years for other sensors
- User-serviceable batteries

1. Compatible products will display both **NEW ALARMS** and **V LINK** badges on their datasheets.



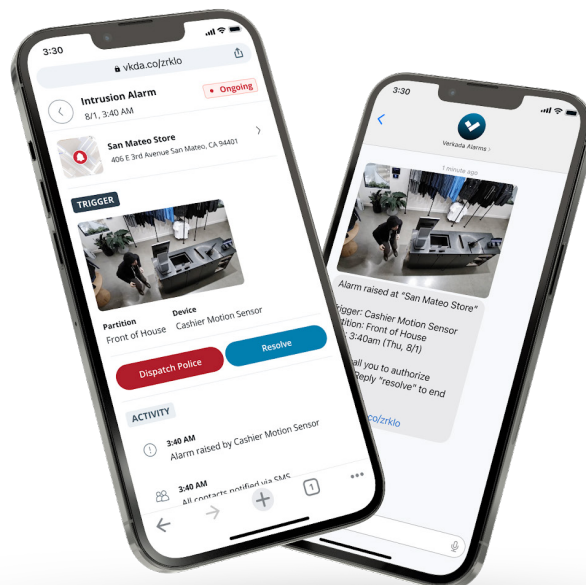
## Cloud-managed

All Verkada wireless sensors are cloud-managed in Command, making Verkada Alarms much easier to maintain and service than a traditional system. For example, organizations can remotely inspect a runaway sensor, click through recent triggers to see what happened on camera, and easily mute the sensor if needed.



## Native camera integration

Easily pair sensors with Verkada or third-party cameras in Command to get video context delivered to your fingertips. If video verification is enabled, monitoring agents will review footage of sensor events and dismiss the alarm if no person is seen. This can prevent false alarm calls and fines from false police dispatches.





## QC11-W Wireless Door/Window Sensor

### Tech Specs



#### Power and network

<b>Power Supply</b>	2x Energizer Ultimate Lithium L91 AA batteries included	<b>Wireless Communication</b>	VLink sub-GHz transceiver
<b>Battery Life</b>	5 years with typical use Real-world battery life depends on a variety factors	<b>Compatibility</b>	Compatible with any new Alarms VLink hub Not compatible with classic Alarms VLink hubs

#### Sensor features

<b>Wireless Range</b>	Open field with line of sight: 2000 ft / 600 m Expect reduced range indoors, depending on environment	<b>Field of View</b>	VLink sub-GHz transceiver
<b>Door Gap Width</b>	Non-metal doors: Up to 2.4" (6.0 cm) Metal doors: Up to 1.5" (3.7 cm) Use included magnet spacer to close gaps	<b>Sensor Technology</b>	Dual-tech TMR and Hall effect sensors
<b>Tamper Detection</b>	Yes		

#### General

<b>Dimensions</b>	<b>Sensor</b> Length: 4.4" (11.3 cm) Width: 1.5" (3.7 cm) Height: 1.0" (2.5 cm) <b>Magnet</b> Length: 2.8" (7.0 cm) Width: 0.6" (1.5 cm) Height: 0.5" (1.3 cm)	<b>Weight</b>	<b>Sensor</b> 3.2 oz (90 g) <b>Magnet</b> 0.6 oz (18 g)
<b>Operating Temperature and Humidity</b>	32 to 122° F (0 to 50° C) 0-90% RH non-condensing	<b>LED Indicator</b>	Install Mode only (Door Opened, Searching for Hub, and Cannot Find Hub)
<b>Certifications<sup>1</sup></b>	FCC, IC	<b>Warranty</b>	10 years

#### Installation

<b>Included Accessories</b>	2x L91 AA batteries, mounting tape, 4x wood screws, 4x sheet metal screws, T-10 Security Torx L-Key	<b>Mounting Options</b>	Wood and metal screws, mounting tape
-----------------------------	---	-------------------------	--------------------------------------

1. Certifications pending and expected by the product ship date.



## QM11-W Wireless Wall Motion Sensor

### Tech Specs



#### Power and network

<b>Power Supply</b>	2x Energizer Ultimate Lithium L91 AA batteries included	<b>Wireless Communication</b>	VLink sub-GHz transceiver
<b>Battery Life</b>	5 years with typical use Real-world battery life depends on a variety of factors	<b>Compatibility</b>	Compatible with any new Alarms VLink hub Not compatible with classic Alarms VLink hubs

#### Sensor features

<b>Wireless Range</b>	Open field with line of sight: 2000 ft / 600 m Expect reduced range indoors, depending on environment	<b>Sensor Technology</b>	Dual-tech PIR sensor and active microwave radar
<b>Detection Range</b>	50' x 50' (15 m x 15 m)	<b>Tamper Detection</b>	Yes
<b>Field of View</b>	90°		

#### General

<b>Dimensions</b>	Length: 4.7" (12.0 cm) Width: 2.3" (5.7 cm) Height: 2.0" (5.2 cm)	<b>Operating Temperature and Humidity</b>	32 to 122° F (0 to 50° C) 0-90% RH non-condensing
<b>Weight</b>	5.4 oz (150 g)	<b>LED Indicator</b>	Install Mode only (Motion Detected, Searching for Hub, Cannot Find Hub)
<b>Certifications<sup>1</sup></b>	FCC, IC	<b>Warranty</b>	10 years

#### Installation

<b>Included Accessories</b>	2x L91 AA batteries, 2x wood screws, 2x wall anchors, T-10 Security Torx L-Key	<b>Mounting Options</b>	Corner, angle, or wall mount
-----------------------------	--	-------------------------	------------------------------

1. Certifications pending and expected by the product ship date.



## QT11-W Wireless Universal Transmitter Sensor

### Tech Specs



#### Power and network

<b>Power Supply</b>	2x Energizer Ultimate Lithium L91 AA batteries included	<b>Wireless Communication</b>	VLink sub-GHz transceiver
<b>Battery Life</b>	10 years with typical use Real-world battery life depends on a variety of factors	<b>Compatibility</b>	Compatible with any new Alarms VLink hub Not compatible with classic Alarms VLink hubs

#### Sensor features

<b>Wireless Range</b>	Open field with line of sight: 2000 ft / 600 m Expect reduced range indoors, depending on environment	<b>Tamper Detection</b>	Yes
<b>Alarm Inputs</b>	1x wired input with supervision Compatible with variable EOL resistors (1k $\Omega$ - 4.7k $\Omega$ )		

#### General

<b>Dimensions</b>	Length: 4.9" (12.5 cm) Width: 1.5" (3.7 cm) Height: 1.1" (2.8 cm)	<b>Operating Temperature and Humidity</b>	32 to 122° F (0 to 50° C) 0-90% RH non-condensing
<b>Weight</b>	3.5 oz (100 g)	<b>LED Indicator</b>	Install Mode only (Input Triggered, Searching for Hub, Cannot Find Hub)
<b>Certifications<sup>1</sup></b>	FCC, IC	<b>Warranty</b>	10 years

#### Installation

<b>Included Accessories</b>	2x L91 AA batteries, mounting tape, 2x wood screws, 2x sheet metal screws, T-10 Security Torx L-Key, 2x 1k $\Omega$ EOL resistors	<b>Mounting Options</b>	Wall or surface mount
-----------------------------	---	-------------------------	-----------------------

1. Certifications pending and expected by the product ship date.



# Ordering Information

## Wireless Sensors

Model Number	Description	Cost (MSRP) USD
QC11-W-HW	Wireless Door/Window Sensor, Dual-Technology	\$99
QM11-W-HW	Wireless Motion Sensor, Dual-Technology	\$159
QT11-W-HW	Wireless Universal Transmitter	\$99