



## NEXTIVA® PSIM™

Actionable Intelligence® for Your Command, Control, & Communications Center

Today's organizations are flooded with information – more than they can rapidly analyze and use to drive appropriate and timely action.

Nextiva® PSIM™ builds on Verint's more than 15 years experience in capturing, analyzing, and distilling vast amounts of information to provide actionable intelligence for a variety of security environments.

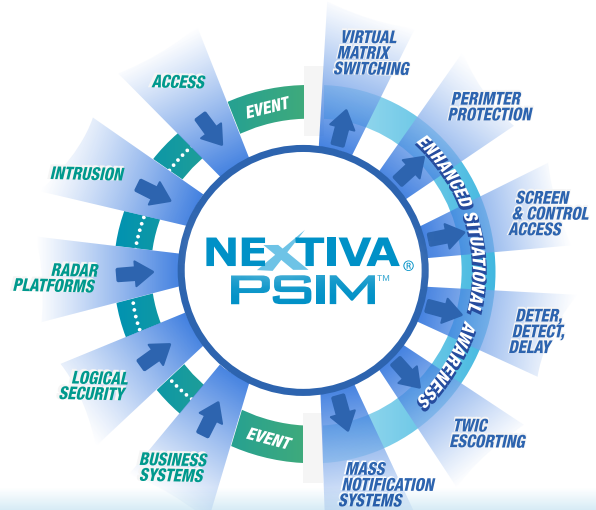
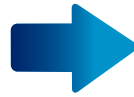
Airports and seaports, cities and metropolitan areas, petrochemical and utility companies, large corporations, schools, colleges, universities, hospitals, and government institutions can maximize the ROI of their security infrastructure by improving the operational effectiveness of their Command, Control, and Communications centers, using Nextiva PSIM.

Immediate situational awareness and faster response leveraging a intuitive 3D multi-layer user interface, efficient organizational control and management through systemic procedures and standards, contingency planning capabilities for natural disasters and calamities, reduced operational costs through efficient deployment of equipment and resources, and optimized planning and preparedness for situations using virtual simulations alongside debriefing and analysis of real events ensures that Nextiva PSIM will route the right information to the right people at the right time in your organization.

# What Can Nextiva PSIM do for *Your* Organization?



## TODAY'S CHALLENGE IN ENTERPRISE & CRITICAL INFRASTRUCTURE ENVIRONMENTS



## THE NEXTIVA PSIM APPROACH

### Emerging Security Needs

During the past decade, a few global trends have influenced the landscape of security needs. The frequency, magnitude, and types of security threats and natural disasters have increased globally. To prevent and contain the consequences from potential situations, governments have implemented several regulations and guidelines that require organizational compliance. Alongside, organizations are continuously trying to improve efficiencies in their operations and looking for ways to reduce total cost of ownership of their systems and infrastructure.

In addition, globalization and consolidation have resulted in more geographically distributed organizations than ever before, with the need to be able to manage and monitor various disparate systems.

Nextiva PSIM addresses the emerging security needs of security leaders heading up large security operations with either centralized or decentralized command, control, and communications centers.

### Enabling Regulations & Compliance

Ranging from FAA/TSA regulations for airports, TWIC screening and escorting requirements at sea-ports, CFATs levels in chemical facilities, FERC and NERC requirements in energy facilities to Cleary Act and HEOA requirements for campuses, and HSPD-12 and PIV/CAC credentialing requirements in government facilities, the Nextiva PSIM solution can enable organizations to comply with regulations applicable to their organization.

Nextiva PSIM provides the ability for security leaders to maintain organizational control and management through centralized and decentralized monitoring, design and enforcement of standard policies and procedures for response to routine or emergency situations, and redundancy to ensure business continuity in crisis situations. Nextiva PSIM's industry standard workflows and checklists ensure that organizations have repeatable and predictable procedures in place to respond to potential threats and incidents, enabling them to address risk, liability, and compliance requirements.

### Enhancing Effectiveness of Security Operations

Command, control, and communications centers (C3) capture information from a multitude of sensors and systems, track down incident locations and perpetrator identities, and initiate and manage response procedures. The Nextiva PSIM solution enables organizations to enhance the operational effectiveness of their security operations.

Nextiva PSIM provides today's security leaders a solution to increase situational awareness in their C3s while reducing response times and lowering total cost of ownership of their security infrastructure. An intuitive 3D multi-layer user interface, features enabling fusion of information from multiple sensors and systems, and systemic prioritization of tasks improves operator effectiveness and reduces response times. In addition, virtual simulations of a variety of situations as well as reporting, debriefing, and auditing after actual situations allow optimized planning, training, and preparedness.

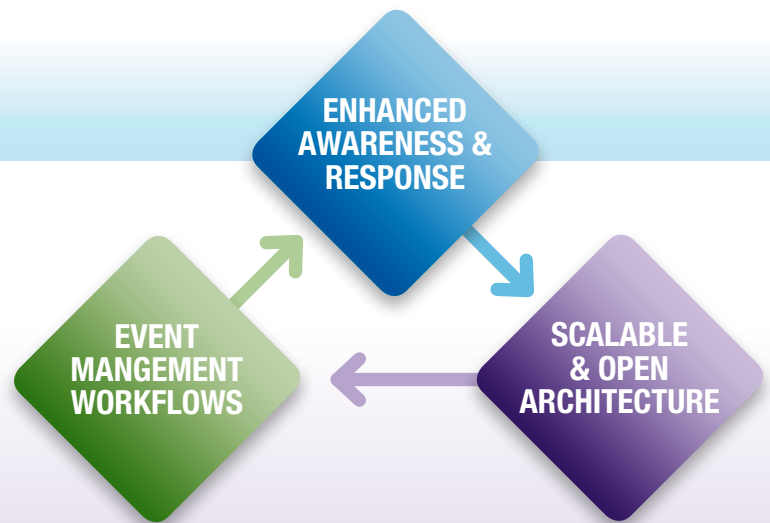
### Optimizing Investments in Globalization & Consolidation

As a result of increased globalization and consolidation of enterprises, organizations are more geographically distributed today than ever. In addition, the systems landscape in organizations today typically consist of a variety of sensors and systems that have been acquired over time by different organizations in different parts of the world. To protect their investments alongside establishing a centralized C3 structure, organizations should look to Nextiva PSIM.

Nextiva PSIM provides security and IT leaders a cost-effective integration platform necessary to be able to leverage their existing systems distributed in different locations around the world. Built using open architecture concepts and scalable technologies, the solution allows organizations to integrate systems ranging from access control, intrusion, video, radar, and border control systems to fire safety, HVAC, communications, GIS, and business systems, enabling organization to optimize their investments to meet their current and future needs.

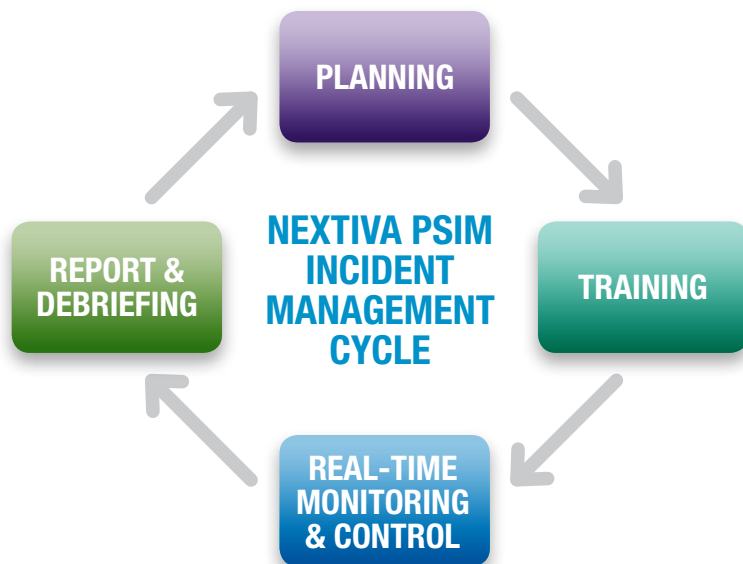
Nextiva PSIM (Physical Security Information Management) is a platform that captures information from a variety of security, safety, and other corporate systems, enables the fusion of the information for a user to view, correlate, and analyze the information to identify situations quickly and efficiently, and initiate and manage response to the situations in collaboration with local agencies.

Nextiva PSIM enables various phases of an incident management cycle, facilitates enhanced situational awareness and response, and is based on an open and scalable architecture.



#### 4-phase Incident Management Cycle Enhances C3 Efficiency

Nextiva PSIM is built to enable the various phases of an incident management cycle including Planning, Training, Real-Time Monitoring & Control, and Reporting & Debriefing.



**Planning:** Nextiva PSIM gives organizations the ability to plan security layouts, develop policies and procedures, and evaluate contingency plans. Nextiva PSIM's scenario generator lets planners run virtual threat scenarios including crowd behavior, gas propagation, blast mitigation and floods and more, to determine in advance the organization's response and level of preparedness for various types of situations. Using a 3D geospatial model of the site, Nextiva PSIM allows virtual installation of devices and sensors to help security managers determine optimal placement of the equipment.

For example, Nextiva PSIM uses real line of sight (LOS) of each camera as compared to their theoretical field of view, to ensure better coverage, avoiding gaps and overlays alongside minimizing total system cost.

**Training:** Nextiva PSIM provides scale and effectiveness in training operators and managers to a high level of preparedness and facilitates standardization in policies and procedures throughout the organization. Instead of training on disparate security and safety systems, with Nextiva PSIM, users train on a single interface which provides a unified view across the entire operation. In addition, simulation of realistic situations enables users to test on a wide range of scenarios cost effectively. Operators learn to identify and assess consequences of potential situations and are familiarized with the standard policies and procedures of the organization.

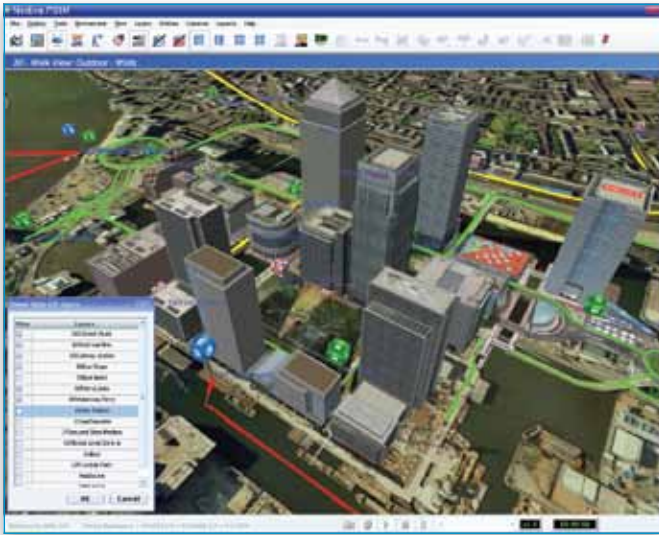
**Real-Time Monitoring & Control:** Nextiva PSIM provides real-time monitoring and control for routine operations and



*3-Dimensional Geospatial Model*



# How Does Nextiva PSIM Work?



*Multi-Site Monitoring View*



*Operational View*

emergency situations by seamlessly integrating, fusing and correlating data from a multitude of sensors and systems, and presenting the information in easy to interpret views. At times of real situations, pre-defined emergency plans are presented in a separate operational view in the form of procedures, checklists and call trees enabling operators to quickly respond and mitigate the event according to standard policies and procedures.

For example, C3 operators can view incident alerts, verify the type of the incident as well as its location, identify the closest hospitals, and communicate the driving route from the incident site to the hospital to the first responder – all using Nextiva PSIM's single and unified interface.

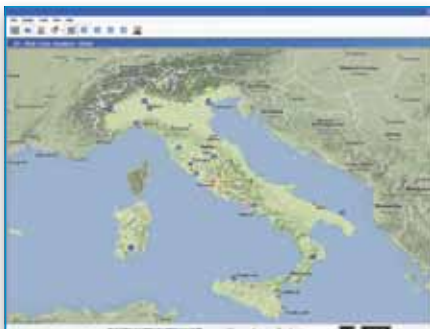
**Reporting and Debriefing:** A built-in reporting tool generates manual, automatic or scheduled reports. Using reports on the

various aspects of a given incident, Nextiva PSIM provides vital intelligence about what transpired, how staff reacted, as well as other variables. Logging and auditing operators' actions lets organizations analyze what went right and what went wrong and make adjustments for improvement. Utilizing this information, Nextiva PSIM improves an organization's preparedness for future incidents.

## Enhanced Awareness and Response

Nextiva PSIM provides various view formats to enhance awareness and response times.

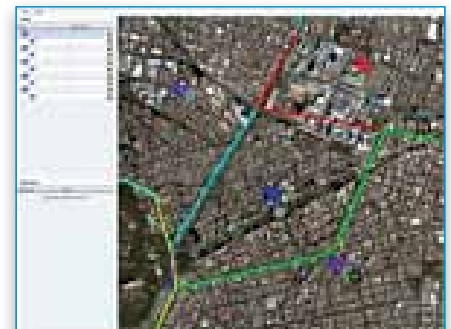
A geographic map view allows operators focus on multiple locations in a geographic region simultaneously. For example, in case of natural disasters and calamities, operators in a C3 can place all locations in a geographic region under watch.



*Map View*



*Multi Site View*



*Multi Zone View*

A multi-site view allows operators to monitor incidents and status at multiple sites simultaneously, interact with different sites through chat, and take control and monitor the sites if necessary.

Two and three dimensional maps for indoors and outdoors, along with the ability to use multiple layers to represent streets, locations and coverage areas of cameras and other sensors, as well the delineation of threat regions and damage zones allows operators to track incidents and suspects, initiate and manage response, and report on potential escalations or spread of incidents on a real-time basis.

In addition, industry standard workflows systemically ensure that operators respond to routine and emergency situations based on standard policies and procedures.

## Open and Scalable Architecture...

Nextiva PSIM's scalable architecture allows multiple users to view information – events, alerts, and video from multiple sites simultaneously.

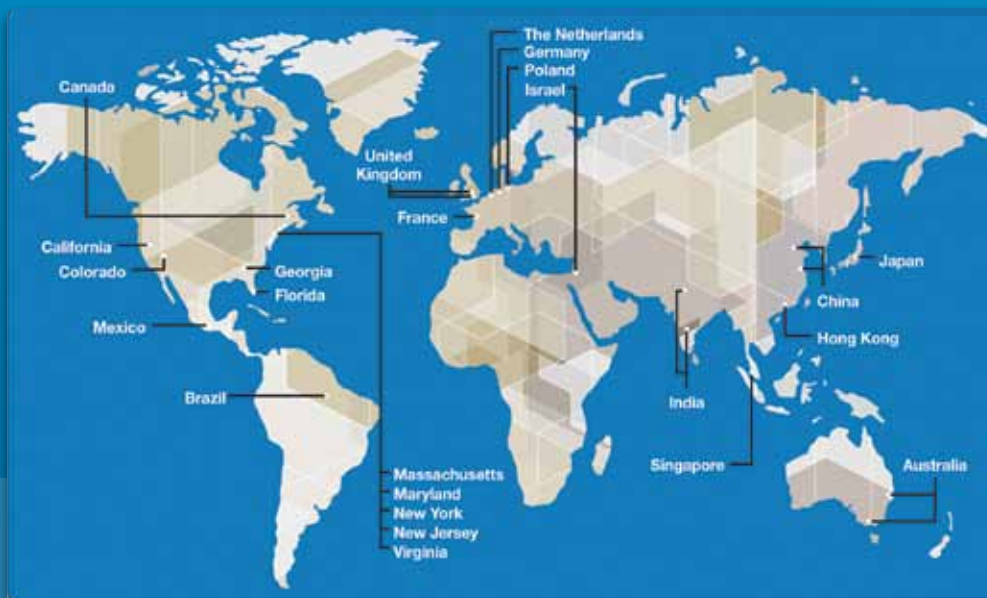
In addition, Nextiva PSIM allows operators situated in different locations to collaborate and share information efficiently. For example, in a hierarchical command and control center structure, operators in National Management Centers, Regional C&C Centers, and various Local C&C and Response Centers can communicate and collaborate with each other in real-time.

An open SDK allows seamless integration and capture of information from a multitude of sensors and systems including access control, intrusion, CCTV, radar, border control, and HVAC systems as well as leveraging of GIS, various modes of communication systems, and multiple public and private organizational databases.

## INTEGRATES WITH A MULTITUDE OF SENSORS & SYSTEMS



# Why Verint?



TOP  
20%

GLOBAL  
SOFTWARE 500

OVER  
85%

FORTUNE 100  
COMPANIES USE  
VERINT SOLUTIONS

OVER  
500

PATENT REGISTRATIONS  
AND APPLICATIONS  
WORLDWIDE

10,000  
PLUS

CUSTOMERS IN  
150 COUNTRIES

Verint is a global leader in Actionable Intelligence® solutions and value-added services. Today Verint solutions are used in more than 10,000 organizations in 150 countries – including more than 85 percent of the Fortune 100.

The Verint Value Proposition is a customer-centric culture founded on innovation, powered by more than 2,800 dedicated professionals committed to provide best-in-class solutions and services to Verint customers and partners worldwide.

Current and new Verint customers looking for the next level of security management solutions for their security operations should look to Nextiva PSIM – it captures, analyzes, and distills vast amounts of information to provide you the actionable intelligence you need to make your organization safe and secure, delivered to you from a company you can trust now and in the future.

## VERINT®

Verint® Systems Inc. (NASDAQ: VRNT) is a global leader in Actionable Intelligence® solutions and value-added services. More than 10,000 organizations in over 150 countries use our workforce optimization and security intelligence solutions to improve enterprise performance and make the world a safer place. For more information, visit [www.verint.com](http://www.verint.com).

videoinfo@verint.com  
1-866-NEXTIVA  
[www.verint.com/videosolutions](http://www.verint.com/videosolutions)  
330 South Service Road  
Melville, NY 11747 USA

March 2011

Unauthorized use, duplication, or modification of this document in whole or in part without the written consent of Verint Systems Inc. is strictly prohibited. By providing this document, Verint Systems Inc. is not making any representations regarding the correctness or completeness of its contents and reserves the right to alter this document at any time without notice.

Features listed in this document are subject to change. Please contact Verint for current product features and specifications.

All marks referenced herein with the ® or ™ symbol are registered trademarks or trademarks of Verint Systems Inc. or its subsidiaries. All rights reserved.

All other marks are trademarks of their respective owners.

© 2011 Verint Systems Inc.  
All Rights Reserved Worldwide.