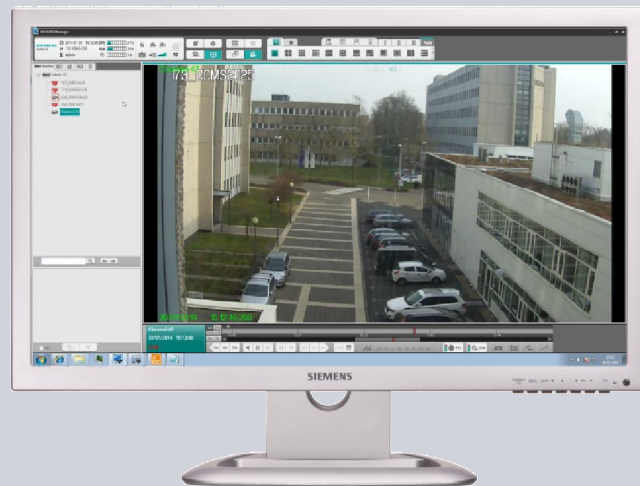




Vectis iX 32/128/UN CMS Central Management Software



Vectis iX32 CMS
Vectis iX128 CMS
Vectis iXUN CMS

Vectis iX CMS, a centralized Management software platform, manages up to 300ch cameras and displays 96ch real-time video on 4 monitors.

Vectis iX CMS supports 16ch synchronous playback, multicast, tour, Region Of Interest, Video Motion Detection, IVA, e-map, event, alarm, notification, digital watermark video export functions which allow user to easily manage and control surveillance system.

Vectis iX CMS is reliable and suitable for large scale project, including government buildings, offices, factories, campuses, hotels, banks, retail chain stores, shopping malls, etc... (Depending on PC performance) and supporting resolutions of up to 20 megapixel.

- Centralized video management of Vectis iX NVR / NVS
- Up to 96 channel Real-time Display
- Manages over 300ch Cameras via Vectis iX NVR / Vectis iX NVS
- Smooth Video with Exclusive Video Playout Control
- Integrated IVA Functions and POS management
- Powerful Alarm Management
- Quad monitor support depending on graphic card performance

Functionalities

■ Manages over 300ch Cameras
Vectis iX CMS can handle 32~300 channel video via different kinds of Vectis iX NVR / NVS

■ Up to 96 channel Real-time Display
Vectis iX CMS creates powerful performance video for 96ch real-time Display on 4 monitors.

■ Smooth Video with Exclusive Video Playout Control
Built-in Exclusive Video Playout Control technology that enables smooth video and limiting of video quality degradation for different, Unstable Network Conditions.

■ Integrated IVA Functions and POS management
Vectis iX CMS manages different POS machines via Vectis iX NVRs/NVSSs, that's suitable for retail chain stores. The Vectis iX CMS also combines with IVA functions such as MVP, E-fences, Missing object, foreign object for more analyses.

■ Powerful Alarm Management
Alarm notification by Pop-up, E-mail, Digital I/O (Modbus Support) when video loss, sensor triggered, HDD crashed, system crashed, abnormal transaction, e-fence, video motion detection, etc.

■ Technical details

Type	Vectis iX32 CMS, Vectis iX128 CMS, Vectis iXUN CMS
Operation System (OS)	Windows 7 (32 & 64 Bit) and higher
Network Protocols	TCP/IP, UDP, HTTP, HTTPS, SMTP, SNMPv3, DNS, DHCP, NTP, ARP, ICMP, FTPc, FTPs, DDNS, RTP (RTCP, RTSP), IGMPv3, UPnP, CIFS, NFS, IEC802.1x
Watchdog	Software Watchdog
System Update	Supports Software Update
IP Camera License	32, 128 and 300 (UN **) camera licenses supported
Video Codec	H.264 High Profile, MPEG4, M-JPEG, MxPEG
Audio Codec	Two-Way Audio, G. 711, G.726, AAC
Streaming Type	Unicasting, Multicasting
Global-Features	
Configurations	Configurations of NVR/NVS, Camera, Event, Alarm, Device, Digital I/O, etc.
User Authority	Export Video Clip, PTZ Control, Live View, Playback, Alarm Search, Configuration, Remote System Control, etc.
E-map	Mapping Cameras and Digital I/O Points, Map Hyperlink (HTML knowledge required)
PTZ Control	PTZ Control, Preset Point, Patrol, Digital PTZ
Display Pattern	1, 2, 3, 4, 5, 6, 8, 9, 12, 13, 16, 18, 24, 25, 36, 48, 64
Viewing Operation	ROI (Region of Interest), Tour
Video Search	Time, Event, Alarm
Synchronous Playback	up to 16ch
Video Playback	Time Slider Control Panel (Forward, Backward, Speed Control, Sync. Playback)
Video Export	Video Export via USB (Supports .avi and .ava Format), Digital Watermark
Intelligent Search (Replay)	Missing Object (Object take away), Foreign Object (Object left behind)
Intelligent Video Analytics (Realtime)	E-fence, Video Motion Detection on all channels People counting 1 dedicated channel only
Event Log	Event logs of System, Cameras, User, etc
Alarm Event / Search	Video Loss, Sensor Triggered, storage failure, System Crashed, Abnormal Transaction, E-fence, Video Motion Detection
Alarm Notification	Pop-up, E-mail, Digital I/O, Trigger Recording
Alarm In / Alarm Out	Support of optional external DI/DO modules via Modbus Protocol (Master, Slave)
POS Live view	Live view incl. Transaction data
POS Search / Playback	Time, Item (Keyword), Price with Transaction data and Video

POS Abnormal Transaction	Alarm Rule (Item, Value), Alarm Popup, Alarm Search
--------------------------	---

Minimum system requirements

Vectis iX CMS	CPU: Intel Core i5, recommended i7 Ram: 8GB or more Operation System: Microsoft® Windows® 7 oder 8.x (64 Bit) (Home Premium, Professional, Ultimate), Microsoft® Windows® Server 2008/2012 (64 Bit) Display: Graphic card nVidia chipset, DirectX3D support, min. 2048 GB Graphic memory 2x HDMI or 4x HDMI Video Outputs (or DisplayPort) LAN: Gigabit Ethernet
---------------	--

DRAFT / PRELIMINARY

■ Details for ordering

Type	Part number	Designation	Weight*
Vectis iX32 CMS	S54569-P106-A100	Vectis iX32 CMS, Mgmt SW 32ch	Aprox. 750g
Vectis iX128 CMS	S54569-P107-A100	Vectis iX128 CMS, Mgmt SW 128ch	Aprox. 750g
Vectis iXUN CMS	S54569-P108-A100	Vectis iXUN CMS, Mgmt SW 300ch **	Aprox. 750g

* Device incl. packing material, accessories that are included in the delivery, and documentation

** Vectis iXUN CMS basically supports unlimited IP channels, but any usage above 300 channels requires mandatory involvement of Siemens or qualified partner Technical Support to approve overall system architecture.

Further products and accessories can be found in the Internet: www.siemens.com/securityproducts

The information in this document contains general descriptions of technical options available, which do not always have to be present in individual cases. The required features should therefore be specified in each individual case at the time of closing the contract.

© Siemens AB • Document no. C-300xxx • Edition: 082014