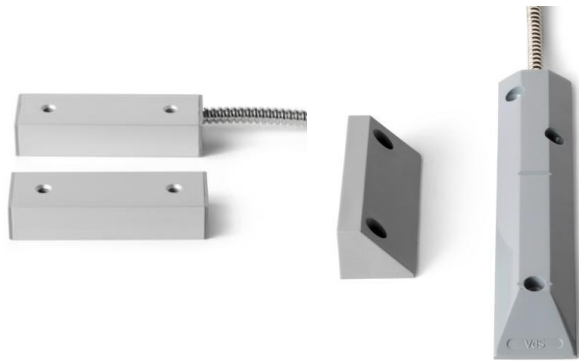


MK-2400-S1 & MK-2400-S2

Magnetic contact

VANDERBILT



Key Features include:

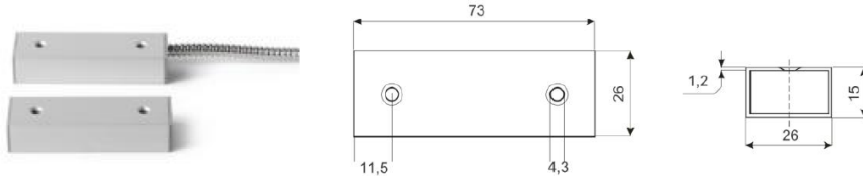
- Robust housing made from Aluminum and polyimide
- Metal tube for cable protection
- Ingress protection to IP67
- Good long term stability
- Fast and efficient mounting

MK-2400-S1 & MK-2400-S2

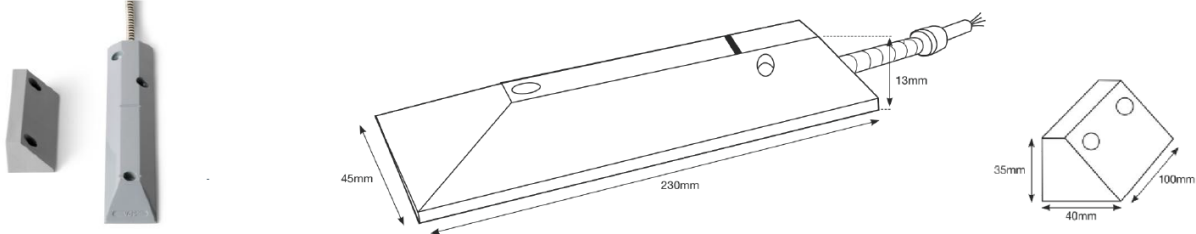
Magnetic contact

VANDERBILT

MK-2400-S1



MK-2400-S2



■ Technical Specifications

Line contact	Single pole, NC contact
Operating voltage	$\leq 40V$ DC
Contact capacity	$\leq 6W$
Switching voltage	$\leq 100V$ DC
Switching current	$\leq 500mA$
Transition resistance	≤ 0.15 Ohm
Environmental	
- Operating temperature	-40 ... +70 °C
- Environmental class VdS/EN	III/IIIA
- Housing protection	IP67
Approvals	VdS, EN, SBSC

■ Ordering information

Type	Art.-No.	Description	Weight
MK-2400-S1	V54536-F104-A100	Magnetic contact, 6m cable, 1m metal tube	0.216Kg
MK-2400-S2	V54536-F104-A200	Magnetic contact S2, 6m cable, 0.5m metal tube	0.44Kg

Issued by
Vanderbilt
Clonshaugh Business and
Technology Park
Clonshaugh
Dublin 17
Ireland
www.vanderbiltindustries.com

Data and design subject to change without notice.
Supply subject to availability.

VANDERBILT