

Magnet Contacts

MK-2000 Series

VANDERBILT



The new EN50131-2-6 approved magnetic contacts series MK-2000 offers a wide variety of products with the following features:

- Self-locking screw housing with torx profile
- Good long-term stability
- Can be used for steel doors and gates
- Protection to IP67 for applications inside and outside
- Convenient mounting

Magnet Contacts

MK-2000 Series

VANDERBILT

Functionalities

■ Application

The magnetic contacts of the MK-2000 series are used in alarm signalling systems and security access control systems to protect doors, gates and windows against unauthorized opening. The extensive assortment of installation accessories permit the use of these contacts in almost any inside or outside application.

■ Function

The magnetic contact consists of two parts, i.e. the reed contact and a permanent magnet. The reed contact and the magnet are mounted at a defined distance on the fixed and the movable

parts of the object to be protected. The reed contact remains closed by the force field of the permanent magnet. If the distance between the reed contact and the magnet increases, the magnetic field becomes weaker in the reed contact and causes the reed contact to open and interrupt the electric circuit.

■ Installation

The installer must ensure that the air gap between the fixed and the moveable parts does not permit sabotage. The MK-2000 series have a self-cutting and self-locking thread, which permits direct sunk installation in wood and plastic objects

without any additional accessories. For installation a hole has to be drilled. The reed contact is screwed into the fixed part of the object to be protected, and the magnetic part is screwed into the moveable part of the object. Because of the very flexible connection cable to the contact installation is easy, even if the cables have to be bent. For use in other materials or in locations where direct use of contacts and magnets is not possible, a plastic adapter set is available, the contact can be screwed to one side and the magnet to the other.

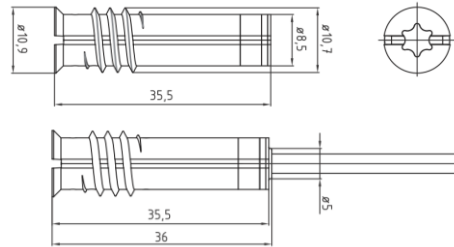
VANDERBILT

Magnet Contacts

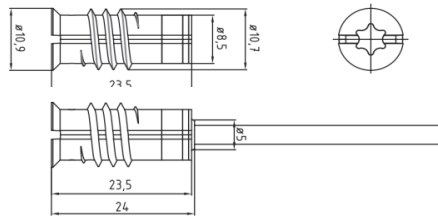
MK-2000 Series

VANDERBILT

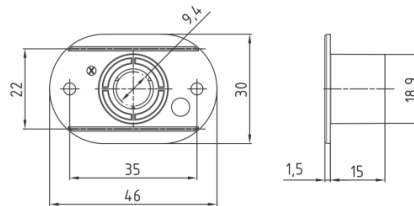
MK-2400; MK-2700



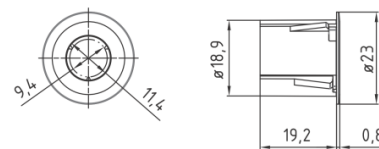
MK-2500



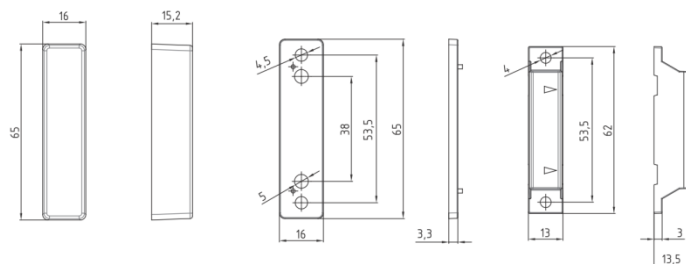
MK-2000-1; MK-2000-2



MK-2000-31; MK-2000-32 – 19mm Ø
MK-2000-21; MK-2000-22 – 25mm Ø



MK-2000-3; MK-2000-4



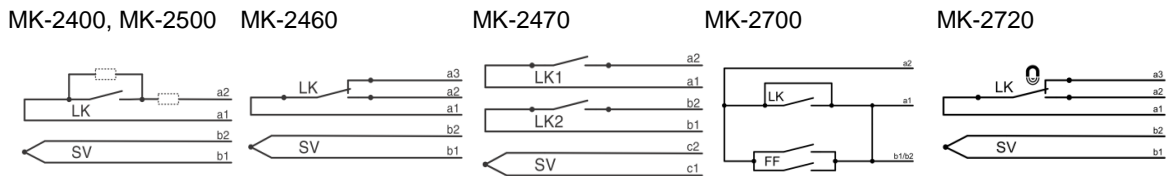
VANDERBILT

Magnet Contacts

MK-2000 Series

VANDERBILT

■ Technical data



| | | | | | |
|---------------------|---|--|--|--|--|
| Approvals (pending) | VdS Klasse B, Gxxxxxx, EN 50131-2-6, Grade 2 SBSC, Larmklass 1/2 | EN 50131-2-6, Grade 2 SBSC, Larmklass 1/2 | EN 50131-2-6, Grade 2 SBSC, Larmklass 1/2 | VdS Klasse C, Gxxxxxx EN 50131-2-6, Grade 3 SBSC, Larmklass 3/4 | EN 50131-2-6, Grade 3 SBSC, Larmklass 3/4 |
|---------------------|---|--|--|--|--|

| | MK-2400, MK-2500 | MK-2460 | MK-2470 | MK-2700 | MK-2720 |
|-----------------------|----------------------|---------------------|----------------------|----------------------|---------------------|
| Contact type | N/C contact | Change-over contact | N/C contact | N/C contact | Change-over contact |
| Switching capacity | ≤ 10 W / VA | ≤ 3 W / VA | ≤ 10 W / VA | ≤ 10 W / VA | ≤ 3 W / VA |
| Switching voltage | ≤ 100 V DC; ≤ 70 VAC | ≤ 30 VDC; ≤ 30 VAC | ≤ 100 V DC; ≤ 70 VAC | ≤ 100 V DC; ≤ 70 VAC | ≤ 30 VDC; ≤ 30 VAC |
| DC switching current | ≤ 500 mA | ≤ 500 mA | ≤ 500 mA | ≤ 500 mA | ≤ 500 mA |
| Permanent current | ≤ 500 mA | | ≤ 500 mA | ≤ 500 mA | |
| Operating temperature | -40 °C to +70 °C | | | | |
| Magnet | AlNiCo 5, NdFeB | | | | |
| Protection category | IP67 | | | | |
| Environmental class | III / IIIA | | | | |

VANDERBILT

Magnet Contacts

MK-2000 Series

VANDERBILT

■ Ordering Informations

| Type | Order No. | Description | Weight |
|---------------|------------------|--|----------|
| MK-2000-1 | V54536-M101-A100 | Plastic adapter | 0.012 kg |
| MK-2000-2 | V54536-M101-A200 | Plastic adapter with strong magnet | 0.015 kg |
| MK-2000-3 | V54536-H101-A100 | Housing for surface mounting | 0.026 kg |
| MK-2000-4 | V54536-H101-A200 | Housing for surface mounting with strong magnet | 0.04 kg |
| MK-2000-21 | V54536-M102-A300 | Plastic adapter round 25mm | 0.008 kg |
| MK-2000-22 | V54536-M102-A400 | Plastic adapter, round 25 mm, with strong magnet | 0.011 kg |
| MK-2000-31 | V54536-M102-A100 | Plastic adapter, round 19mm | 0.008 kg |
| MK-2000-32 | V54536-M102-A200 | Plastic adapter, round 19mm, with strong magnet | 0.011 kg |
| MK-2400-2 | V54536-F102-A100 | Magnetic contact, 2 m cable | 0.054 kg |
| MK-2400-6 | V54536-F102-A200 | Magnetic contact, 6 m cable | 0.114 kg |
| MK-2400-10 | V54536-F102-A300 | Magnetic contact, 10 m cable | 0.174 kg |
| MK-2400-20 | V54536-F102-A400 | Magnetic contact, 20 m cable | 0.324 kg |
| MK-2400-2-1K | V54536-F103-A100 | Magnetic contact, 2 m cable, 1k ohm resistor | 0.054 kg |
| MK-2400-2-2K2 | V54536-F103-A200 | Magnetic contact, 2 m cable, 2 x 2k2 ohm resistor | 0.054 kg |
| MK-2460-6 | V54536-F105-A100 | Magnetic contact, 6 m cable, change-over contact | 0.06 kg |
| MK-2470-2 | V54536-F106-A100 | Magnetic contact, 2 m cable, two reed contacts | 0.08 kg |
| MK-2500-2 | V54536-F107-A100 | Magnetic contact, short-version, 2 m cable | 0.043 kg |
| MK-2500-6 | V54536-F107-A200 | Magnetic contact, short-version, 6 m cable | 0.103 kg |
| MK-2500-10 | V54536-F107-A300 | Magnetic contact, short-version, 10 m cable | 0.163 kg |
| MK-2500-25 | V54536-F107-A400 | Magnetic contact, short-version, 25 m cable | 0.388 kg |
| MK-2700-2 | V54536-F108-A100 | High security magnetic contact, 2 m cable | 0.047 kg |
| MK-2700-6 | V54536-F108-A200 | High security magnetic contact, 6 m cable | 0.107 kg |
| MK-2700-20 | V54536-F108-A300 | High security magnetic contact, 20 m cable | 0.317 kg |
| MK-2720-6 | V54536-F109-A100 | High security magnetic contact, 6 m cable, change-over contact | 0.06 kg |

VANDERBILT