

RANGE OF ACCESSORIES

SEISMIC DETECTOR

VANDERBILT



Vanderbilt's powerful GM7xx- series is the result of over 45 years engineering experience in the field of seismic detectors. Our products are specifically designed for round-the-clock monitoring of safes, ATMs, strong rooms or any other environment with a high concentration of valuable assets or dangerous goods.

All known types of intruder attacks generate unique vibration patterns. Their characteristic values such as timing, frequency and amplitude are detected and analysed using Vanderbilt's patented Senstec® technology. This technology also ensures that environmental disturbances are ignored, and false alarms eliminated.

As reliability of detection is equally important as ease-of-installation, testing, monitoring and protection against ambient influences, Vanderbilt is offering a comprehensive range of accessories to suit the performance requirements of all kinds of medium to high-risk applications and environments.

Key Features include:

- Versatile software tool for customised sensitivity settings, visual imaging of structure-borne noise and display of event memory
- Convenient mounting accessories for easy installation, even if space is restricted
- Robust housing accessories to protect the detector against mechanical damage and environmental influences
- Flexible testing accessories for use during installation and throughout the operating life of the detector
- Reliable monitoring accessories to control doors and keyholes of cabinets and vaults and to safeguard valuables against unauthorised access

Detection of:

- Hammers, chisels
- Saws, crowbars
- Sledgehammers
- Concrete grinders
- Diamond-head drills
- Hydraulic pressure tools
- Water-jet cutting tools
- Thermal tools
- Cutting torches
- Oxygen lances
- Explosives

Immunity to:

- Operational noises
- Environmental influences

RANGE OF ACCESSORIES

SEISMIC DETECTOR

VANDERBILT



Configuration & Analysis

■ GMSW7

SensTool configuration software



The SensTool configuration software is a PC based program for the selection and setting of operating parameters as well as the display and analysis of event data. It is offered complete with interconnection lead, which can be used to program Senstec® seismic detectors beforehand or directly on site. The standard profile settings can be modified to perfectly fit the application and environmental conditions.

SensTool provides visual imaging of structure-borne sounds derived from mechanical or thermal attack tools and immediately displays the type of the detected alarm.

In conjunction with the GM760 and GM775 seismic detectors, the SensTool software also retrieves the event memory, which can be downloaded and stored for confirmation of commissioning and future reference.

Compatible with

- GM730
- GM760
- GM775

Mounting & Installation

■ GMXP0

Mounting plate



The GMXP0 mounting plate helps to ensure easy installation and reliable detection performance.

Vanderbilt strongly recommends the use of a mounting plate with every Senstec® seismic detector. The use of a universal mounting plate is mandatory for installation on uneven steel surfaces and on concrete applications. The mounting plate may be either fixed with a screw or tack welded for mounting to steel surfaces.

Compatible with

- All GM7xx

VANDERBILT

RANGE OF ACCESSORIES

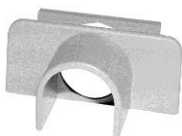
SEISMIC DETECTOR

VANDERBILT

Mounting & Installation

■ GMXC2

Pipe connection sleeve



The GMXC2 is a 16mm diameter conduit connection sleeve, which ensures a fixed and secure connection and protects the cable exit of the Senstec® seismic detectors.

Compatible with

- All GM7xx

Testing & Verification

■ GMXS1

Internal test transmitter



The GMXS1 remote test transmitter is installed in direct proximity to the detector and used for function and mounting test of a single seismic detector prior to system arming.

Compatible with

- All GM7xx

■ GMXS5

External test transmitter



The GMXS5 remote test transmitter is used to fully test and evaluate an installation with multiple detectors by simulating attack signals. It is mounted separately from the seismic detector onto the monitored object. If the seismic detectors are installed at the correct spacing and setting, the test signal is detected and an alarm is triggered. Therefore, the complete installation can be verified.

Compatible with

- All GM7xx

Approval

- VdS Class C

■ GMYA7-AS

Test & Indication system



The GMYA7-AS remote test system consists of a key module and a single indicator module. It enables daily routine function tests to be conducted on up to 8 seismic detectors independent of an intruder alarm system.

The GMYA-AS can only be used with the seismic detector GM775 and in combination with the GMXS1.

Compatible with

- GM775 ONLY

Approval

- VdS Class C

■ GMYA7-A

Alarm indication module



The alarm indicator module GMYA7-A enables the expansion of the alarm indication system GMYA7-AS. In total a system supports 7 indicator modules, whereby each of them connects up to 8 seismic detectors.

Compatible with

- GM775 ONLY

RANGE OF ACCESSORIES

SEISMIC DETECTOR

VANDERBILT

Housing & Enclosures

■ GMXB0

Floor recess box



The GMXB0 is a reinforced flush mounting box, which provides a secure solution for floor mounting in concrete as it withstands loads of up to 2 tonnes.

Compatible with

- All GM7xx

■ GMXW0

Wall / Ceiling recess box



The GMXW0 is a mounting kit including a polystyrene mould that sits in the unset concrete. The polystyrene mould is mounted on a metal back plate with tapped mounting holes for the GM7xx seismic detectors. Once the concrete is set, the polystyrene can be carefully removed to expose a recess box. It offers sufficient space to install a GM7xx detector in the wall or the ceiling and provides access for cables via conduit to and from the detector.

Compatible with

- All GM7xx

Monitoring

■ GMXD7

Anti-drill foil



The GMXD7 is a self-adhesive protection foil that is used to protect seismic detectors from external mechanical attacks. The GMXD7 is fitted inside the cover of the detector.

Compatible with

- GM730
- GM760
- GM775

■ GMAS6

Movable mounting kit



The GMAS6 movable mounting kit is used in conjunction with GM7xx seismic detectors to monitor safe and strong room doors. When the system is armed, the seismic detector protects the monitored object against thermal and mechanical attacks as well as unauthorized opening.

Compatible with

- All GM7xx

The movable mounting kit consists of 3 plates:

- A detector plate permanently fitted to the detector and incorporating a micro-switch and magnetic contact
- A door plate located on the door of the monitored object
- A rest plate located on the side of the monitored object

The seismic detector can be either positioned on the door plate (night time operation / armed position) or on the rest plate (day time operation / unarmed position). In addition, the door plate can also be used to monitor flush fitting keyholes.

VANDERBILT

RANGE OF ACCESSORIES

SEISMIC DETECTOR

VANDERBILT

Monitoring

■ GMXP3 / GMXP3Z



Lock protection

The GMXP3 / GMP3Z lock protection is used in conjunction with a GM7xx seismic detector to monitor safe and strong room doors with exposed keyholes.

A micro-switch fitted in the swivel plate monitors every movement of the swivel arm and triggers an alarm when unauthorized access is attempted. The swivel arm is made from hardened steel and fully covers the keyhole when the system is armed. When the system is disarmed, the swivel arm can easily be rotated by 90° to enable unimpeded access to the keyhole.

The GMXP3 can be used for lock roses that protrude up to 4mm. The Z shaped swivel arm of the GMXP3Z allows installations on even larger lock roses that protrude up to 24mm.

Compatible with

- All GM7xx

■ GMXS2 / GMXS4



2mm / 4mm Spacer for GMXP3 / GMXP3Z

The 2mm or 4mm spacer is used to create a wider gap between a keyhole and the GMXP3 or GMXP3Z lock protection.

Compatible with

- GMXP3
- GMXP3Z

RANGE OF ACCESSORIES

SEISMIC DETECTOR

VANDERBILT

■ Ordering Information

| Type | Art. No. | Description | Weight* |
|----------|------------------|---|---------|
| GMSW7 | VA5Q00006246 | GMSW7 SensTool-SW - GM730/760/775 | 0.128kg |
| GMXP0 | VBPZ:2772730001 | GMXP0 Mounting plate - GM7xx | 0.290kg |
| GMXC2 | VBPZ:5021840001 | GMXC2 Connection sleeve (16mm) - GM7xx | 0.004kg |
| GMXS1 | VBPZ:4202370001 | GMXS1 Internal Test transmitter - GM7xx | 0.025kg |
| GMXS5 | VBPZ:5627000001 | GMXS5 External Test transmitter - GM7xx | 0.363kg |
| GMYA7-AS | V54534-F101-A100 | GMYA7-AS Test & Indication system-GM775 | 0.800kg |
| GMYA7-A | V54534-F102-A100 | GMYA7-A Alarm indication module - GM775 | 0.418kg |
| GMXB0 | VBPZ:2772020001 | GMXB0 Floor recess box - GM7xx | 2.237kg |
| GMXW0 | VBPZ:2771210001 | GMXW0 Wall / Ceiling recess box - GM7xx | 1.380kg |
| GMXD7 | VA5Q00006245 | GMXD7 Anti-drill foil (10x) - GM730/60/75 | 0.121kg |
| GMAS6 | VBPZ:4886060001 | GMAS6 Movable mounting kit - GM7xx | 0.594kg |
| GMXP3 | VBPZ:3470190001 | GMXP3 Lock protection - GM7xx | 0.780kg |
| GMXP3Z | VBPZ:5712410001 | GMXP3Z Lock protection - GM7xx | 0.823kg |
| GMXS2 | VBPZ:3506110001 | GMXS2 2mm Spacer for GMXP3 / GMXP3Z | 0.014kg |
| GMXS4 | VBPZ:3506240001 | GMXS4 4mm Spacer for GMXP3 / GMXP3Z | 0.025kg |

* Total weight of the product inclusive of the weight of its accessories and packaging.