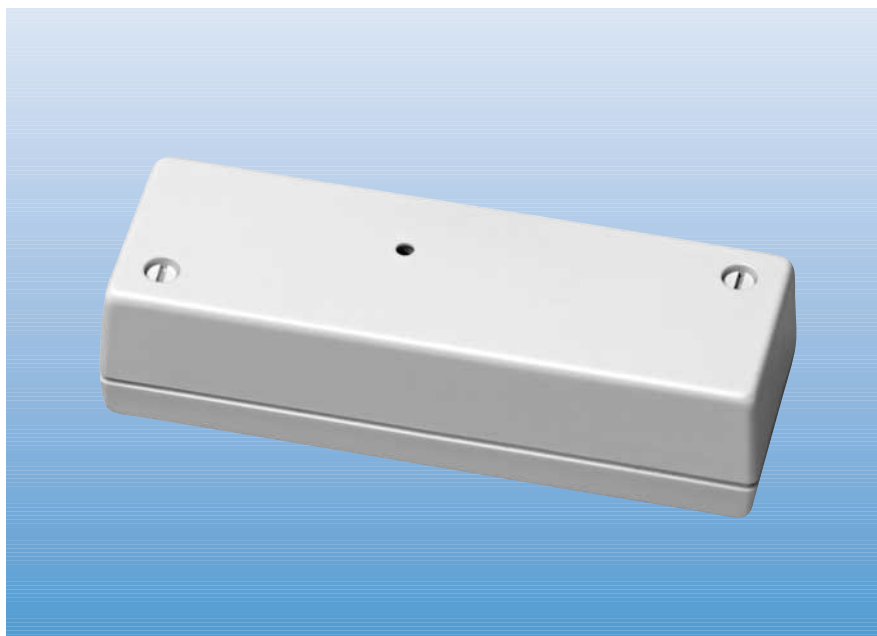


High sensitivity vibration detector

The ES400 vibration detector can be mounted on window-frames, doors, walls, ceilings and floors for early detection of burglary attempts.



Versatile in application

ES400 is easily mounted onto the surface to be monitored, for example, on window frames, brick or concrete walls, or metal doors; using the supplied screws. The coverage area varies with the type of material. For performance and installation check, use the EST400 test tool.

Highly professional ...

The reset of the LED can be remotely controlled via the DAY/NIGHT function. Moreover, there is a choice between automatic reset and reset by interruption of the operating voltage. A tamper contact provides protection against opening the cover and the alarm relay is protected against external magnetic fields.



Effective on a wide variety of materials



Supply voltage monitoring



High immunity to environmental disturbances



Low current consumption



Microprocessor assisted signal evaluation



Installer-friendly detector concept



High sensitivity that can be simply adjusted

... and reliable

The use of high quality components in manufacture and the voltage supply monitoring feature guarantee product integrity – around the clock. For enhanced detection reliability, the ES400 detector may be used in combination with glass-break detectors and magnet contacts in a wide range of residential and commercial applications.

High sensitivity vibration detector

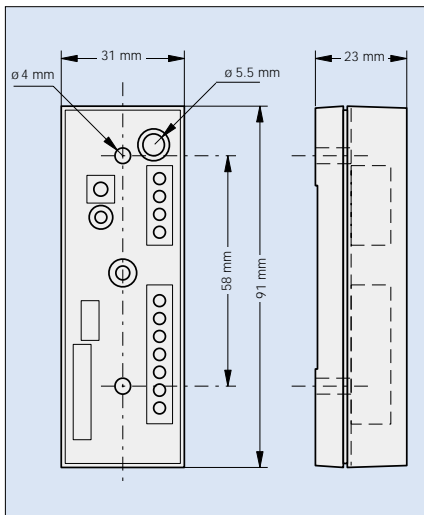
Technical data

Supply voltage (nom. 12 V)	8 ~ 15 V _{DC}
• Max. ripple (0 ~ 1 MHz)	2 V _{SS}
Current consumption	
• at 12 V _{DC} /quiescent	6 mA
• at alarm	10 mA
Frequency range	1 ~ 7 kHz
Alarm outputs	
• Electronic relay	33 Ω in series
• Contact rating	25 V _{DC} /100 mA
• Alarm hold time	2 s
• Alarm memory/Test indicator	LED
Tamper monitoring	Microswitch
• Cover and breakaway contact	25 V _{DC} /100 mA
Control inputs	
• For testing	LOW ≤3 V / HIGH ≥6 V
• For unset/set input	LOW ≤3 V / HIGH ≥6 V
Coverage area (approximate values)	
• Steel/Wood/Plywood	Radius 3 m
• Brick/Stone/Masonry	Radius 2 m
• Concrete	Radius 1 m
Sensitivity adjustment	Potentiometer
Pulse counter adjustment (1 to 4 impacts)	Jumpers
Ambient conditions	
• Storage temperature	- 20 °C ~ + 50 °C
• Operating temperature	- 20 °C ~ + 50 °C
• Humidity of the air, DIN 40040	Class F (max. 95% rel.)
• IEC 529 housing protection	IP 31
• Immunity to HF interference fields (0.1 MHz ~ 1 GHz)	< 15 V/m

© 2000 Alarmcom AG

Data and design subject to change without notice

Dimensions



Ordering data

Typ	Art. No.	Designation	Weight
ES400	537049.0-027	Vibration detector, white	0.045 kg
ES400B	537052.0-027	Vibration detector, brown	0.045 kg
ESC400	537065.0-027	Metal housing	0.108 kg
ESM400	563136.0-027	Mounting plate	0.066 kg
EST400	472612.0-027	Test tool	0.080 kg



Ae20011a; 08.2000; Catalogue: I; Section: 6