

CHSM2210/2211-B

Protective camera housing with integrated bracket

VANDERBILT

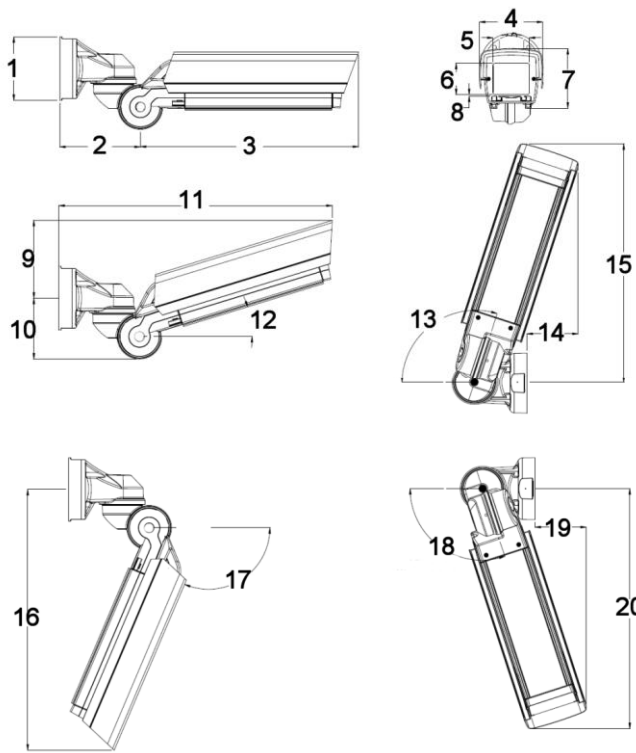


The multi-purpose protective camera housing in Vanderbilt design is made of aluminium and equipped with a sunshield and integrated heater. It can accommodate all current Vanderbilt cameras with fixed focus or varifocal lenses.

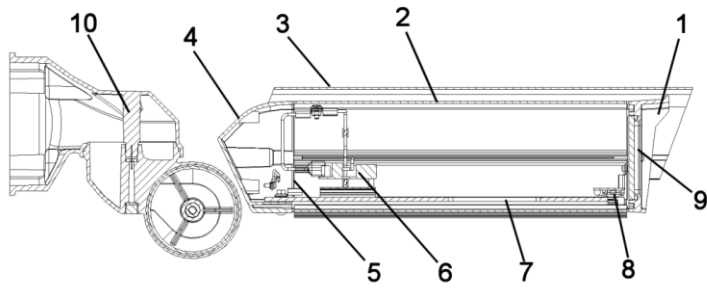
The housing has an integrated mounting bracket allowing the cables to be run inside. It is designed for wall mounting; a ceiling mount bracket is available as an option. The housing cover is easy to remove, facilitating on-site installation and cabling of the camera with lens.

Key features include:

- Integrated bracket with internal cable channel
- For wall mounting; ceiling mount bracket available as an option
- Integrated heater to prevent condensation on the front window
- Protection rating IP66 for outdoor use
- Vanderbilt corporate design



1	Diameter 133 mm	11	574 mm
2	169 mm	12	17°
3	458 mm	13	108° without tilt
4	133 mm	14	108 mm
5	76 mm	15	504 mm
6	66 mm	16	547 mm
7	125 mm	17	113°
8	3 mm	18	108° without tilt
9	163 mm	19	108 mm
10	127 mm	20	504 mm



1	Front end cap	6	Terminal board
2	Housing body	7	Camera mounting plate
3	Sunshield	8	Demister assembly
4	Rear end cap	9	Window
5	Cable glands	10	Bracket assembly

Technical data

	CHSM2210-B	CHSM2211-B
Nominal voltage	110 – 230 V AC, 50/60 Hz	12 – 24 V AC, 50/60 Hz
Fuse rating (fuse F1)	2 A, 250 V AC, 5x 20 type (T), HBC	5 A, 250 V AC, 5x 20 type (T), HBC
Electrical connections	Main supply connections via fused PCB-mounted terminal blocks. Use crimped ferrules when terminating cables. 6-way pillar terminal block available for user connections.	
Cable entry	2x M16 (5 – 10 mm diameter cable range)	

Heater	Nominal: 7 W Max.: 25 W PTC resistor heating element, thermostatically controlled
Environmental	
Operating temperature	-20 to +60 °C Ensure fitted equipment has suitable temperature range for the application (e.g. max. typical ambient operating temperature of camera and lens; Ta = 40 °C)
Max. internal dissipated power	30 W
Relative humidity	Max. 95 % (non-condensing)
Protection rating	IP66, BS EN 60529
Material	Toughened glass window Housing body/sunshield/mounting rails: Aluminium extrusions End caps: Die-cast aluminium
Finish	Housing body: Polyester powder coat, RAL9006 White Aluminium Sunshield: Polyester powder coat, RAL9006 White Aluminium End caps: Polyester powder coat, RAL7016 Grey
Internal dimensions (W x H x D)	85 x 80 x 225 mm
Weight	3.50 kg

Note:

When using lenses with a focal length < 3 mm in conjunction with 1/3" cameras, parts of the camera housing may be visible in the video image (this is due to its design).

Details for ordering

Type	Part no.	Designation	Weight
CHSM2210-B	V54561-C602-A1	Protective camera housing with integrated bracket, 225 mm, 230 V AC	3.5 kg
CHSM2211-B	V54561-C602-A2	Protective camera housing with integrated bracket, 225 mm, 24 V AC	3.5 kg
CDBC0075	V54561-C710	Ceiling mount bracket	4.5 kg
CAPD1210-C230	V54561-B7-A1	Power supply unit 230 V AC / 12 V DC, 500 mA	0.5 kg
