

FORTRESS STRUCTURAL CANTILEVER SLIDE GATE

BY TYMETAL CORP.


The Fortress Structural Slide Gate, manufactured by Tymetal Corp., is a cantilever system of unique double track design appropriate for openings up to 40 feet for singles and up to 80 feet for doubles.

The frame is fabricated from aluminum alloy extrusions with a top primary member rectangular in cross section and the bottom member a structural channel. Vertical members at the ends of the frame and between the counterbalance and opening are square in cross section with nominal base dimensions of no less than 2" x 2".

The gate has separate semi-enclosed double tracks of extruded aluminum alloy. The gate frame is supported from the tracks by four, self-aligning, 4-wheeled, sealed lubricant, ball-bearing truck assemblies. The bottoms of the support posts are equipped with two pairs of rubber guide wheels. Diagonal cross bracing of 3/16" minimum diameter stainless steel cable is installed to brace the gate panels and provide adjustment.

Tymetal Structural Slide Gates are perfect for heavy use applications where security and reliability are critical. The Structural Slide Gate can be combined with a matched Variable High Speed operator system and special security hardware to provide a complete Tymetal Tiger System - the only complete gate system tested as a system to over 200,000 cycles.



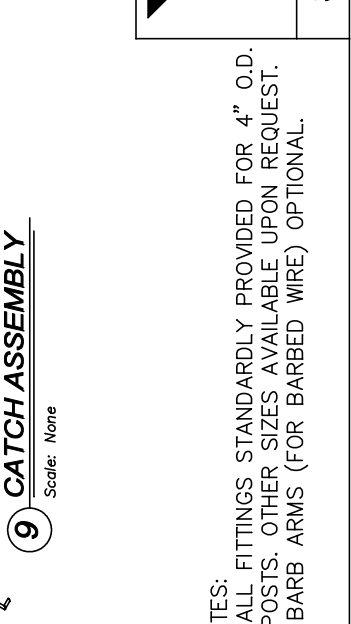
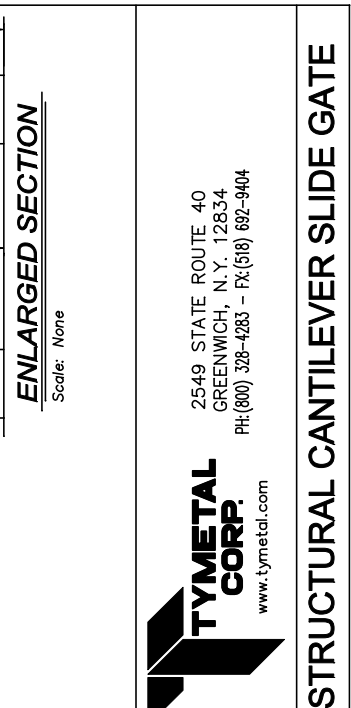
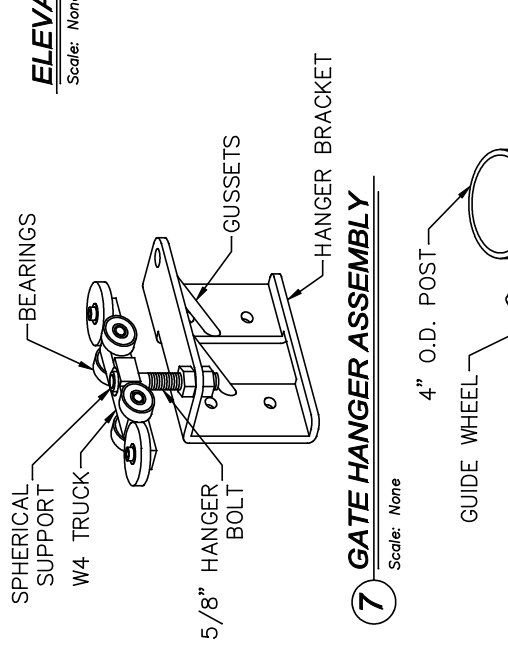
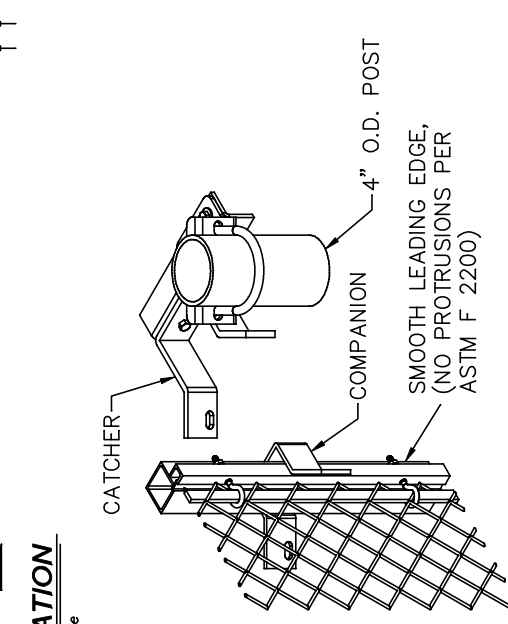
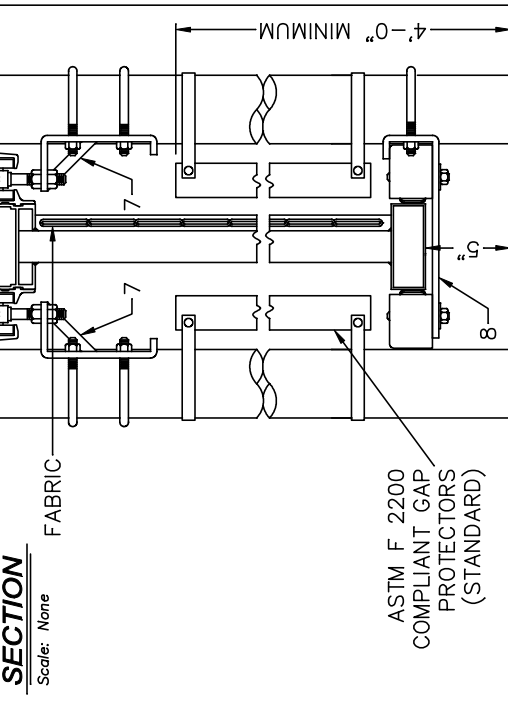
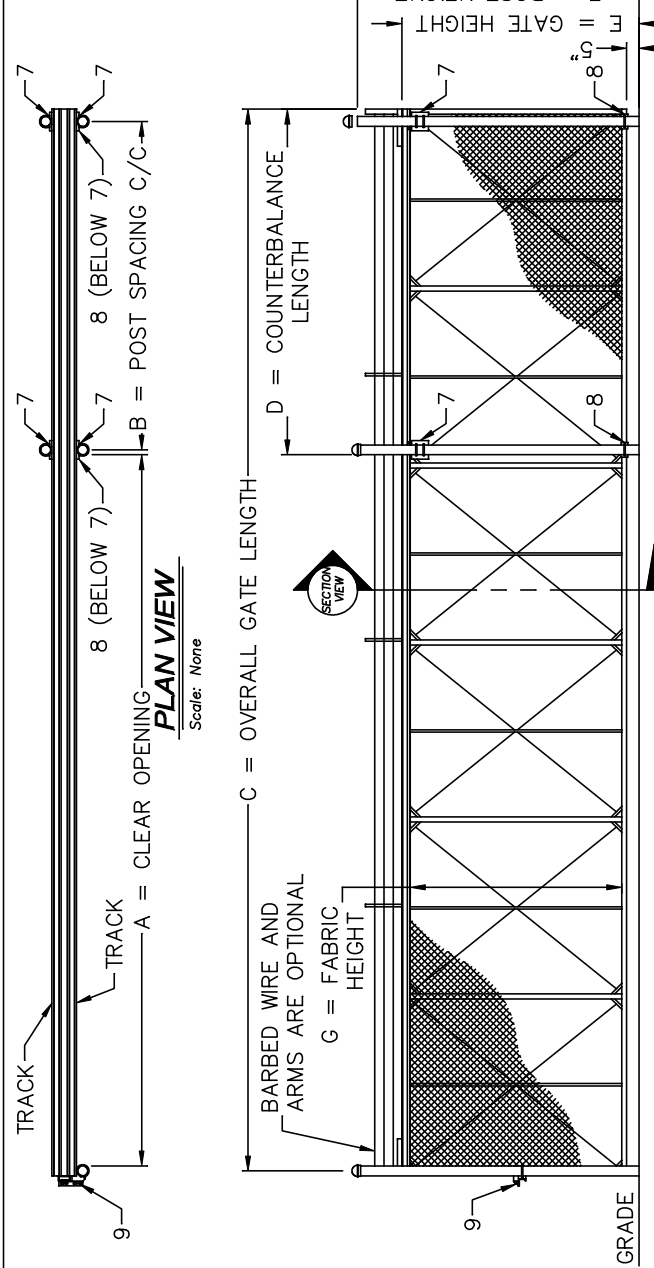
Supporter and
Proud Member of 

Tymetal Corp.

(800) 328-GATE (4283) • www.tymetal.com
Greenwich, NY • Pearland, TX

We Close  Openings

CRITICAL DIMENSION CHART			
MARK	DESCRIPTION	FORMULA	DIM.
A	CLEAR OPENING	A	-
B	COUNTERBALANCE POST SPACING C/C	(A/2)-11"	-
C	OVERALL GATE LENGTH	A x 1.5	-
D	COUNTERBALANCE LENGTH	A x 0.5	-
E	NOMINAL GATE HEIGHT	E	-
F	POST HEIGHT (W BARB ARMS)	E + 1'-6"	-
G	FABRIC HEIGHT	E - 1'-0"	-



NOTES:

- ALL FITTINGS STANDARDLY PROVIDED FOR 4" O.D. POSTS. OTHER SIZES AVAILABLE UPON REQUEST.
- BARB ARMS (FOR BARBED WIRE) OPTIONAL.

Tymetal Corp.
www.tymetal.com

2549 STATE ROUTE 40
GREENWICH, N.Y. 12834
PH(800) 328-4283 - FX(518) 692-9404

STRUCTURAL CANTILEVER SLIDE GATE