

# Topaz

Software for access control



## OVERVIEW

Integrate access control, video surveillance, alarm monitoring, and photo ID badging with the Topaz Access Control System. Topaz is packaged with everything you need to get your security system up and running quickly and reliably.

Topaz software includes a quick-start menu for Auto Configuration and Batch Add cards, which you can activate instantly with a mouse click. Topaz uses a simple browser-style interface with full-color maps, interactive icons, and point-and-click video. Packaged in complete two- and four-door starter kits and expansion kits, or as individual parts, Topaz provides everything you need for systems with up to 256 readers. Photo ID badging and report generation with preconfigured and custom reports are all part of your Topaz package.

### Integrated video surveillance

View video from the Topaz user interface with the click of your mouse. Either click the video icon that's tagged to event details, or view live video by clicking the video button in the alarm queue. Connect as many as eight digital video recorders over your Topaz network. Topaz supports the DVMRe CT-II, StoreSafe™, Digia™ II, SymDec™ and the TruVision™ DVR 10 (TVR 10) series DVRs.

### Robust communications options

Robust communications are built into your Topaz system. Every control panel has an onboard high-speed LAN/WAN connection while still allowing for RS-485, RS-232 and dial-up communications. You choose the best-fit options for every application.

### Auto configuration

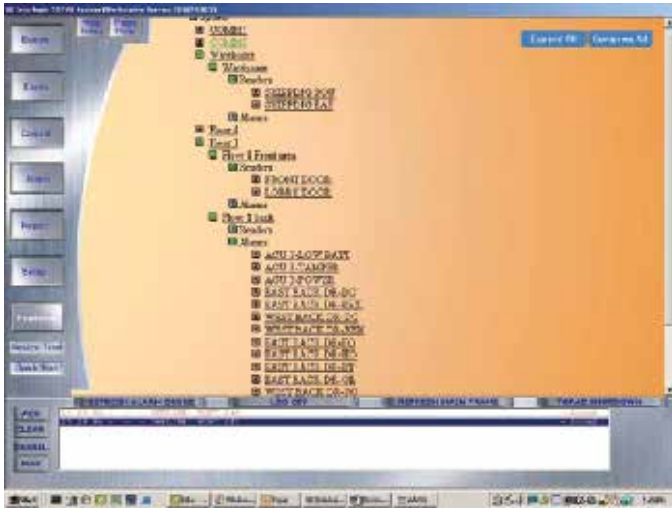
With a click of the mouse, you can initiate the Auto Configuration feature to detect RT panels, input/output modules and modems on the system. You can then select the configured devices or add names to individual devices before saving. Use the Device Tree to view the entire system configuration at a glance.

## STANDARD FEATURES

- Integrated DVR support adds video recording to events reported to the Topaz system
- Individual parts or packaged in complete kits for startup or expansion
- Browser-style interface with Device Tree
- Interactive color graphics with dynamic icons
- Photo ID and badging software included
- Intelligent controller keeps functioning even during host communications loss
- Data Guard database corruption protection

### Browser-style interface with interactive color graphics

The Topaz interface gives you a familiar browser-style environment in which to administer and operate the system. Dynamic alarm, reader, security area, and relay icons are displayed on color maps or other images in standard graphic file types. The icons have full drill-down capabilities to the device level. Use simple mouse clicks on the appropriate icons to acknowledge alarms or operate, arm or disarm individual devices and doors or complete security areas.



Device Tree displays the system's configuration.

### Fully functional workstations

You can add up to four full workstations to the server, which also operates as a workstation. Both the server and the workstations include dynamic and fully interactive maps with onscreen video call-up, PTZ control, and report and event printing. Each station can also be used as an enrollment or assessment station for the integrated photo-badging system.

### Badging

Create badges easily with Topaz's integrated video badging and photo ID facilities. Features include a badge design and drawing package with multilayer design tools, drag-and-drop capabilities and a full editing package.

The digital photo capture tool provides image manipulation capabilities. In addition, it features multiple-frame capture so your subject can choose the best likeness from several photos. Photos may also be imported from remote video cameras and digital still cameras.

### Report generation

Report generation is extremely easy through dozens of preconfigured reports, arranged by cardholders, operators, device types, system events, alarm events, alarm history and operator actions. The system is also equipped with a point-and-click customizable Employee Report Generator tool with multilevel filtering.

### Instant access

Topaz panels are not host-dependent. Each panel has a resident database of users and security information so it always keeps functioning. Topaz provides access operations and alarm monitoring, even during system communication loss or data downloads.

### Data Guard

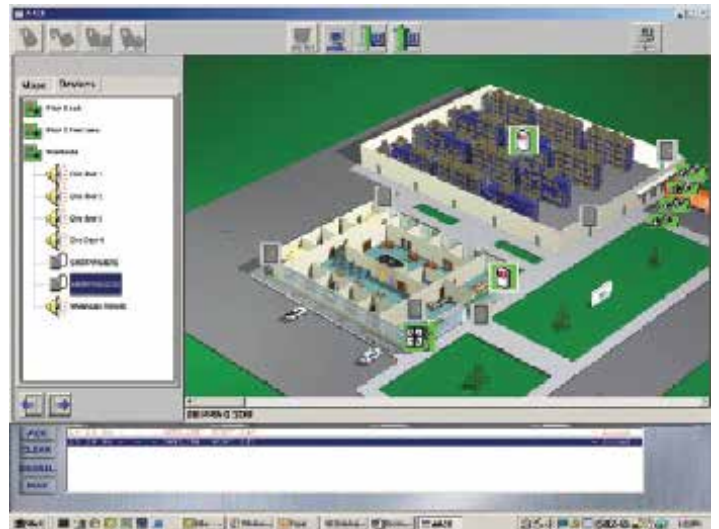
Topaz eliminates the potential for database corruption in field panels due to communication failures during downloads. The Data Guard feature copies data to local memory during a download, then verifies the accuracy of the data before updating the panel database, ensuring the integrity of the data.

### CCTV camera with PTZ control

Add a video switcher to your network for a complete CCTV camera display with pan/tilt/zoom control to view an entire area. These features are available directly from any of the interactive color graphic maps.

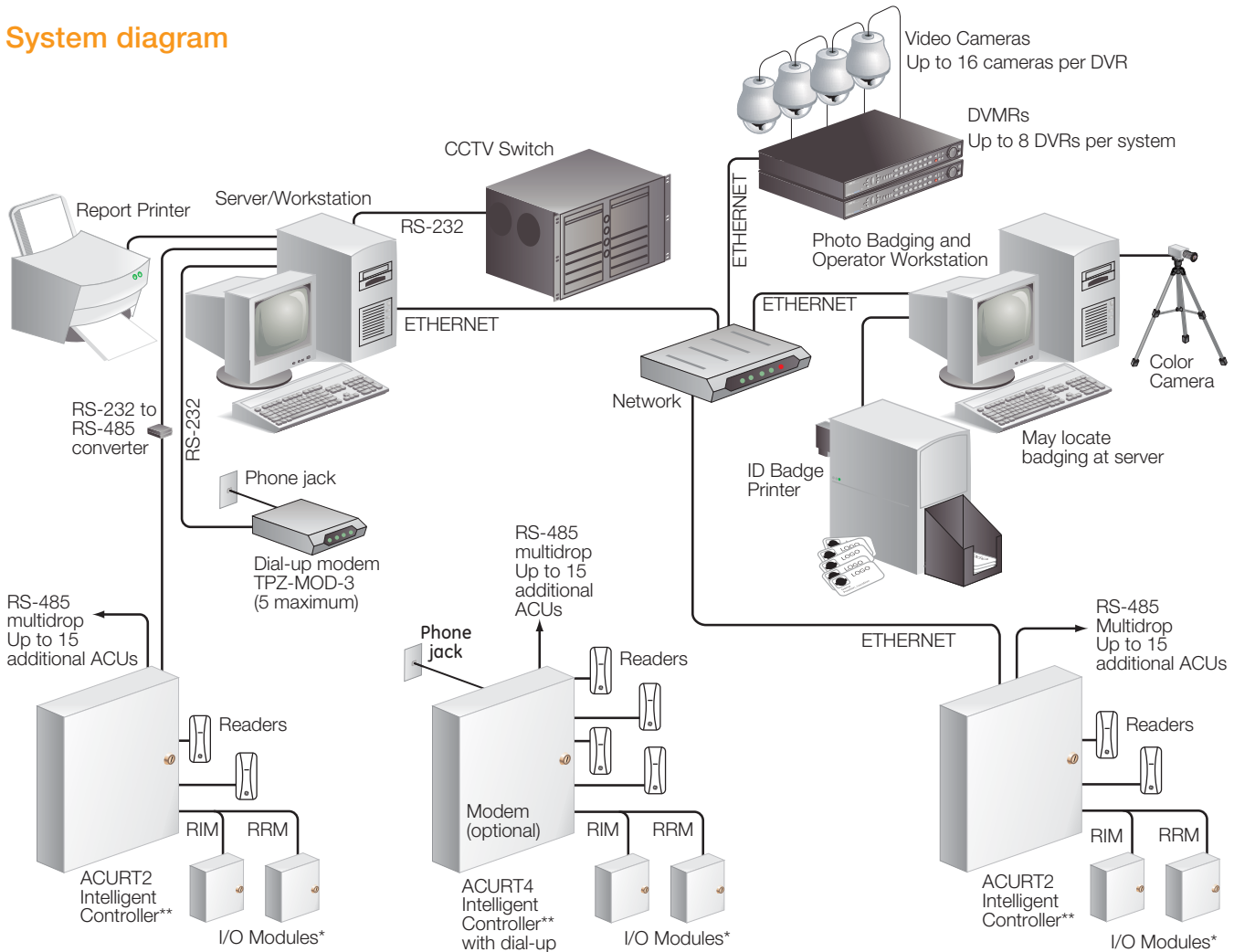
### Entry and exit delays by area

Configuring a short time delay before reporting an alarm allows ingress or egress while the system disarms or arms. Set each area with an individual delay.



Browser-style graphical interface can drill down to device level.

## System diagram



\* Up to four I/O modules on each ACURT panel.

\*\* All RIM and RRM panels require external 24 VDC power (UL-UPS-24V).

### ACURT2 and ACURT4 intelligent controllers

Topaz panels are equipped with 90 MHz cold fire processors for fast two-way communications; and they support magstripe, Wiegand, barium ferrite, barcode, proximity, biometric and smart card technologies.

The ACURT panels are designed for installation ease with removable hinge enclosure covers, a point-to-point wiring diagram etched on the panel's overlay and diagnostic LEDs. Panels also include flash memory for easy upgrades from the server.

Up to 16 panels can be multidropped on an RS-485 bus. Connect up to four input modules (RIM) and/or four output modules (RRM) to each panel. Each reader input on a Topaz panel has three 6-state supervised inputs: a door contact, a REX (Request to Exit) and an auxiliary input. There are two reader inputs on the ACURT2 and four on the ACURT4 panel.

### Starter and expansion kits

Packaged in complete two- and four-door starter kits and expansion kits, complete Topaz systems are easy to order. Kits numbered A through D come with Topaz software, a two- or four-reader panel (ACURT2 or ACURT4), readers, 50 proximity cards, manual, RS-232 to RS-485 converter, terminator and a 6-foot DB-9 to DB-25 cable. See the ordering information for kit numbers.

### Compatibility

Topaz hardware is forward-compatible with Sapphire Pro and Diamond. Start with a package that meets your needs now, knowing that you can add flexibility in the future.

## Specifications

### System Capacity

Readers	256
Cardholders	10,000
Digital video multiplexer/recorders	8
Cameras	128
Field panels	64
Alarm points	2,048
Relay outputs	1,024
Time schedules	127
Event buffer size	250,000
Operator password	64
Holidays	32
Serial ports	5
Color graphics	Yes
Elevator control	Yes
CCTV switching	Yes
Photo ID badging	Yes
Access groups	64
Security areas	255
Access groups/card	8
Security areas/card	8
Workstations (in addition to file server)	4

### Minimum PC Requirements

Intel® Pentium® 4 processor @ 1.8 GHz	Windows® XP Pro, Vista Ultimate or Windows 7
Monitor resolution	1024 x 768 pixels; 16-bit color
RAM	1GB minimum
Video memory	4MB
Floppy drive	3.5 in. 1.44MB
Disk space required	2GB
CD-ROM drive	20X
Sound card and speakers	Yes
USB port	1 minimum for Software Sentinel
Ethernet card	TCP/IP

## Ordering Information

### System Kits

Each kit includes cards, readers, ACURT panel, RS-232 to RS-485 converter, plug-in transformer, Topaz software and back-up batteries

<b>TPZ-SYS-A-GE</b>	Two-reader system (two T-100 readers)
<b>TPZ-SYS-B-GE</b>	Two-reader system (two T-500W readers)
<b>TPZ-SYS-C-GE</b>	Four-reader system (four T-100 readers)
<b>TPZ-SYS-D-GE</b>	Four-reader system (four T-500W readers)

### Expansion Kits

Each kit includes ACURT panel, enclosure, readers, plug-in transformer and back-up batteries

<b>ACURT2-EX-PP-GE</b>	Two-reader control panel with two T-100 (mini-mullion) readers
<b>ACURT2-EX-MU-GE</b>	Two-reader control panel with two T-500W (1-gang mullion) readers
<b>ACURT4-EX-PP-GE</b>	Four-reader control panel with four T-100 (mini-mullion) readers
<b>ACURT4-EX-MU-GE</b>	Four-reader control panel with four T-500W (1-gang mullion) readers

### RCR-REX PIR

<b>RCR-REX-W</b>	Dual-technology request-to-exit motion sensor, DPDT, Form C, includes wall plate, white
------------------	---

### Software and Hardware

<b>TPZ-RIM-1</b>	Remote 16-input Module with enclosure and lock
<b>TPZ-RRM-1</b>	Remote 16-Relay Output Module with enclosure and lock
<b>ACURT2</b>	Two-reader control panel with 16MB RAM, LAN port
<b>ACURT4</b>	Four-reader control panel with 16MB RAM, LAN port
<b>TPZ-SRVR-SW</b>	Topaz server software
<b>TPZ-WKSTA-SW</b>	Topaz workstation software
<b>TPZ-SWUPGRADE</b>	Topaz existing system software upgrade covers both existing server & workstation(s) – does not include USB dongle license key.

### Video Imaging and Badging

<b>TPZ-VIB</b>	Badging kit with capture card
<b>TPZ-PRINTER-1</b>	Badging kit with capture card
<b>TPZ-PRINTER-2</b>	Badging kit with capture card
<b>TPZ-VPO-4</b>	50 PVC overlays for TPZ-CPP2-1 (ProxCard II)
<b>TPZ-CBP-A1</b>	50 direct-print PVC cards (no technology)
<b>TPZ-REFILL1</b>	Replacement film for Printer 1
<b>TPZ-REFILL2</b>	Replacement film for Printer 2

*Additional Topaz parts are listed in the price guide.*