

Tokina

16X MOTORIZED ZOOM LENS

TM16Z7516GAIDC	f = 7.5-120mm F/1.6 DC AUTO IRIS
TM16Z7516GAIDCPN	f = 7.5-120mm F/1.6 DC AUTO IRIS With Preset(Zoom/Focus)

SPECIFICATION

MODEL NUMBER		TM16Z7516GAIDC / TM16Z7516GAIDCPN
IMAGE FORMAT		1/2inch
FOCAL LENGTH		7.5-120mm
MAXIMUM APERTURE		F1 : 1.6
APERTURE RANGE		F1:1.6 - 360
M.O.D.		1.5m
ANGLE OF VIEW () = 1/3"	HORIZONTAL	W45.35° - T3.22° (W34.49° - T2.41°)
	VERTICAL	W34.49° - T2.41° (W26.03° - T1.81°)
FILTER SIZE		M72mm, P=0.75
BACK FOCAL LENGTH		12.80mm
DIMENSIONS		W80 x H98 x L142.5mm
WEIGHT		980g
OPERATING TEMPERATURE		-20°C ~ 60°C
MOUNT		C

Electrical

• FOCUS

INPUT VOLTAGE	DC+6 ~ +12V
CURRENT CONSUMPTION	60mA or Less
MOTORIZATION SPEED	Approx. 7 Sec. (6V)

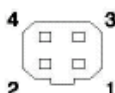
• ZOOM

INPUT VOLTAGE	DC+6 ~ +12V
CURRENT CONSUMPTION	60mA or Less
MOTORIZATION SPEED	Approx. 6 Sec. (6V)

CABLE CONNECTIONS

• DC AUTO IRIS (4-Pins Connector)

PIN #	SIGNAL
1	Damping Coil -
2	Damping Coil +
3	Driving Coil +
4	Driving Coil -



• POTENTIOMETER-PRESET (TM16X7516GAIDCPN Only)

CABLE COLOR	CONNECTION
Orange	Pot. Supply
Gray	Zoom Pot. Wiper
Purple	Pot. Return
Blue	Focus Pot Wiper

* Potentiometer Resistance : 5KΩ (±20%) 0.19W

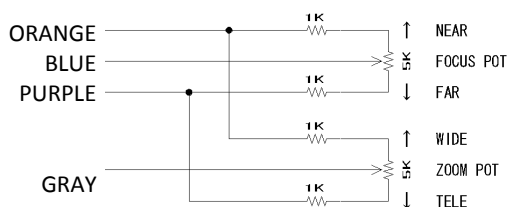
• FOCUS

CABLE COLOR	POLARITY	DIRECTION
Black	+ (-)	Inf. (Near)
Red	- (+)	

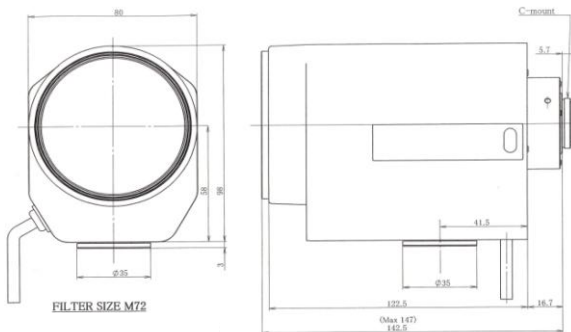
• ZOOM

CABLE COLOR	POLARITY	DIRECTION
Green	+ (-)	Wide (Tele)
White	- (+)	

Wiring details for potentiometer-preset



APPEARANCE



* Design and Specifications are subject to change without notice.