

Premier 816

CONTROL PANEL WITH INTEGRATED COMMUNICATOR



THANK YOU FOR VOTING TEXECOM

- ✓ 8 FULLY PROGRAMMABLE ZONES (EXPANDABLE TO 16)
- ✓ INTEGRATED MULTI-PROTOCOL DIGITAL COMMUNICATOR (PULSE/EXPRESS/FAST FORMAT, CONTACT ID, SIA LEVEL II & PAGER)
- ✓ LOCAL & REMOTE UPLOAD/DOWNLOAD VIA WINTEX™ SOFTWARE
- ✓ 8 FULLY PROGRAMMABLE OUTPUTS (2 SUPERVISED)
- ✓ 2-WIRE/4-WIRE SMOKE DETECTOR COMPATIBILITY
- ✓ 4-WIRE DATA-BUS FOR COMMUNICATING WITH KEYPADS & EXPANDERS
- ✓ 4 TRUE PARTITIONS WITH SEPARATE ENTRY/EXIT, BELL DELAY & DURATION TIMERS
- ✓ ZONE DOUBLING FEATURE
- ✓ 750 EVENT LOG (TIME & DATE STAMPED)
- ✓ 32 FULLY PROGRAMMABLE ACCESS CODES
- ✓ 4 BYPASS GROUPS
- ✓ CTR21 TELECOMMUNICATION APPROVAL

PREMIER RKP8 Plus

LED keypad (8 Zone Indicators) with multi level back lighting, built in piezo sounder.



PREMIER RKP16 Plus

LED keypad (16 Zone Indicators) with multi level back lighting, built in piezo sounder & 2 programmable zone inputs.



PREMIER LCD

LCD keypad with multi level back lighting, built in piezo sounder, 2 programmable zone inputs & 1 programmable output.



PREMIER LCDL

Large size LCD keypad with multi level back lighting, built in piezo sounder, 2 programmable zone inputs, 1 programmable output & speaker driver output.



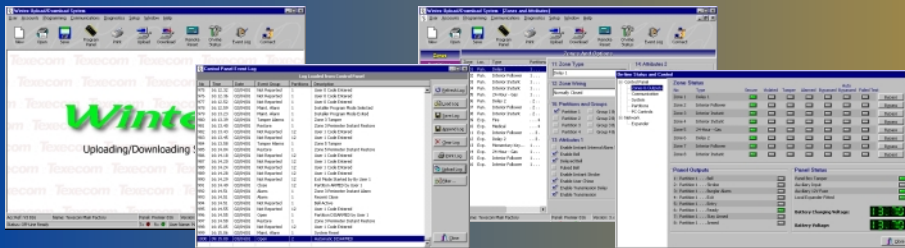
Ask your distributor today for the new Texecom full colour Product Guide.

Texecom
www.texe.com

FEATURES & EXPANSION

- ✓ ZONES PROGRAMMABLE TO 1 OF 9 WIRING OPTIONS INCLUDING NORMALLY CLOSED, NORMALLY OPEN, SINGLE EOL, DOUBLE EOL & ZONE DOUBLING
- ✓ 32 PROGRAMMABLE ZONE ATTRIBUTES
- ✓ PROGRAMMABLE ZONE LOOP RESPONSE TIME
- ✓ ZONE SOAK TEST FACILITY
- ✓ 41 PROGRAMMABLE SYSTEM/PARTITION TIMERS
- ✓ 29 PROGRAMMABLE KEYPAD OPTIONS INCLUDING PARTITION ASSIGNMENT, EMERGENCY ALARM ENABLE/DISABLE, QUICK ARM/DISARM ENABLE/DISABLE & SYSTEM ALARM TONES ENABLE/DISABLE
- ✓ 82 PROGRAMMABLE OUTPUT FUNCTIONS
- ✓ SUPERVISED SIREN OUTPUT - CONFIGURABLE FOR SPEAKER OR BELL DRIVER
- ✓ PRINTER OUTPUT VIA *PC-Com*
- ✓ STAND-BY BATTERY TEST
- ✓ INSTALLER CODE LOCKING
- ✓ 4 TELEPHONE NUMBERS FOR ALARM RECEIVING CENTRE
- ✓ DTMF OR PULSE DIALLING FORMATS
- ✓ AUTOMATIC TEST TRANSMISSION
- ✓ PROGRAMMABLE REPORTING CODES FOR EACH SYSTEM EVENT
- ✓ ATTENDED OR UNATTENDED UPLOAD/DOWNLOAD
- ✓ ANSWER PHONE DEFEAT OPTION
- ✓ AUTO BYPASS MODE (PROGRAMMABLE PER PARTITION)
- ✓ PROGRAMMABLE VOLUME CONTROL FOR PANEL/EXPANDER SPEAKER OUTPUT
- ✓ *WINTEX UDL* SOFTWARE

WINTEX UDL SOFTWARE



User-friendly Windows[†] based software, designed for use with the *Premier Series* of control panels, provides complete remote or local upload/download & system diagnostics for total control & flexibility.



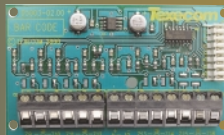
PREMIER 8X REMOTE ZONE EXPANDER

The *Premier 8X* Remote Zone Expander connects to the data-bus to provide the following features:

- ✓ 8 fully programmable zones
- ✓ 2 fully programmable outputs
- ✓ Speaker driver output with programmable volume control

PREMIER 8XE LOCAL ZONE EXPANDER

The *Premier 8XE* Local Zone Expander plugs directly onto the *Premier 816* to provide 8 additional fully programmable zones.



PC-Com



The *PC-Com* adds the ability to Upload/Download locally with the *Premier Series* control panels. One end of the *PC-Com* simply plugs onto the control panel, whilst the other end connects to a PC or laptop running the *Wintex UDL* software.

PREMIER REMOTE KEYPADS



RKP8 Plus



RKP16 Plus



Premier LCD



Premier LCDL

A full range of remote keypads are available to suit all installation requirements.

- ✓ Separate indicators for each zone allow the system status to be viewed at a glance
- ✓ 4-wire connection to data-bus
- ✓ 2 fully programmable zones (excludes *RKP8 Plus*)
- ✓ Multi level back-lighting
- ✓ Built in piezo electric sounder
- ✓ 1 programmable output (*Premier LCD/LCDL* only)
- ✓ 1 speaker driver output (*Premier LCDL* only)

EUROPEAN STANDARDS

Conforms to European Union (EU) Low Voltage Directive (LVD) 73/23/EEC (amended by 93/68/EEC) and Electro-Magnetic Compatibility (EMC) Directive 89/336/EEC (amended by 92/31/EEC and 93/68/EEC). EN 50131-1 Grades 1 and 2.

The CE mark indicates that this product complies with the European requirements for safety, health, environmental and customer protection.

BEST MANUFACTURER 2000 & 1999

INTRUDER ALARM MANUFACTURER OF THE YEAR 2002, 2001 & 2000



Certificate Number: FM 35285



British Security Industry Association



P816.EU4