



# **nx**

Network Camera & Video Server



## Professional Solutions for IP and Mobile Surveillance Applications



**TeleEye**

[www.TeleEye.com](http://www.TeleEye.com)

# NX

| Network Camera & Video Server |

TeleEye NX Series is a complete portfolio of professional and practical network camera and video server utilising our proprietary SMAC-M compression technology. The NX range offers the balanced combination of high-quality video, mobility, scalability and cost effectiveness. By using TeleEye NX, users can build an integrated, scalable, wired or wireless IP & mobile video surveillance solution over existing network infrastructure. With the support of TeleEye versatile back-end applications, users can gain extra control over their business management beyond security.



## ▶ Mobile and Portable Video Surveillance



In addition to managing network videos through a PC in the office, TeleEye M-303 mobile video monitoring software gives you

live video on your mobile phone while you are on the move. Remote surveillance can truly be anywhere, anytime and anyhow.

If fixed network is not accessible in the camera locations, for instance, in rapid deployment applications or traffic monitoring projects, TeleEye NX video server, with our proprietary SMAC-M video compression technology, can deliver live video through mobile data network or WiFi with bursty and limited network resources.

## ▶ Professional and Robust Design



TeleEye NX network camera and video server are best fit in all surveillance environment and diverse applications. They incorporate with specifications you need such as day & night operation, vandal resistant, weather proof, PTZ, Power over Ethernet (PoE), event management and many more. The switchable IR-cut filter in IR network camera model produces both accurate colour video under natural light and clear monochrome video when its IR illumination turns on.

► Scalable and Flexible Network Configuration

TeleEye NX network camera and video server can be used to build a global video monitoring and recording system from anywhere within TCP/IP networks. With our efficient SMAC-M video compression technology, more TeleEye NX devices can be accommodated into one network without the concern of affecting the overall performance. The system is highly scalable and expandable by adding more network cameras or video servers at anytime you need. When using with TeleEye WX-M16 Multi-site Software, videos from up to 16 cameras can be monitored and recorded in a single PC via LAN or Internet.



► Advanced Security Design

TeleEye NX network camera and video server allows the system administrator to set up different login accounts for individual users with different user's authorities. Hence the system administrator can authorize a certain set of users to carry out certain functions while he can restrict the access of certain cameras from some other users. Every detailed operation is under your control.



TRAFFIC



RETAIL



ATM



AIRPORT



PETROL STATION

► Cost-effectiveness for All Infrastructures

TeleEye NX definitely adds values to your existing networking infrastructure. With TeleEye NX, you can easily build a professional IP surveillance solution without further investment on installation and maintenance of conduits and video cables. The Power over Ethernet configuration further eliminates the needs to put in any power cable. The total cost of ownership of your networking infrastructure and video surveillance solution becomes lower.

► Multi-stream Video Coding Technology (SMAC-M)



Incorporated with proprietary SMAC-M compression technology, TeleEye NX delivers no compromise on recording and efficient network viewing performance. It provides independent resolution & frame rate settings. Recording videos from up to 64 TeleEye NX devices in one PC can be achieved when working with TeleEye NXR Video Management and Recording Solution. With the support of TeleEye NXR, users can build a reliable and highly scalable IP video solutions.

## Features:

- Multi-stream Video Coding Technology
- Flexible connections: LAN, ADSL & mobile network...
- Refreshing rate: 25/30fps
- Video management & recording with TeleEye NXR
- Recording up to 200/240fps at D1 & 400/480fps at CIF
- Multiple login account
- Support dynamic IP with **sureLINK**
- Built-in web server
- Independent remote viewers
- Mobile video monitoring with M-303
- Power over Ethernet ( PoE )\*
- Remote audio transmission\*
- Sophisticated event management
- Compatibility with popular telemetry protocols\*
- Vandal resistant\*
- Day / Night ( IR )\*
- IP66 weather proof\*

\* Availability are subject to technical specifications of individual models.

## A Complete Range of TeleEye IP & Mobile Surveillance Solution

### NX301 Video Server

*Converting analogue camera into IP-based or mobile surveillance*



- 1 video in, 1 audio in/out, 1 alarm in/out, 1 RS485 out
- Refreshing rate up to 25/30fps at D1 resolution
- USB connection for mobile data modem
- Power over Ethernet
- Power output for DC 12V camera
- **sureLINK** for dynamic IP Internet connection
- Supporting popular 3rd party telemetry protocols
- Supporting mobile phone viewing

### NX288 IR Vandal Resistant Network Dome

*IP surveillance in complete darkness*



- Ultra Hi-Resolution 1/3" CCD, HQ1 Technology
- f=2.9 - 10mm Vari-focal auto-iris IR lens
- True day & night operation with switchable IR-cut filter
- 10 IR LEDs, ~15m illumination range
- 0.13 Lux / F1.3 (IR OFF), 0.0 Lux (IR ON)
- IP66, vandal resistant, 3-axis adjustment
- Power over Ethernet
- Supporting mobile phone viewing

### NX173 Outdoor Vandal Resistant Network Dome

*Outdoor and vandal resistant IP Surveillance*



- f= 3.6mm fixed iris lens
- 0.5 Lux / F1.2
- IP66 weather proof & vandal resistant
- Auto gain control
- Back light compensation
- Supporting mobile phone viewing

### NX599 Professional 36X Day / Night Network Speed Dome

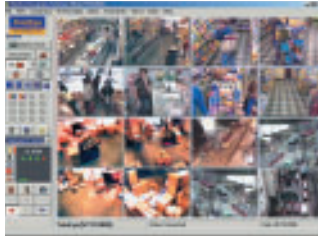
*IP-based high speed dome for all round surveillance*



- Optical zoom: 36X, Digital zoom: 12X
- 128 presets, 6 patrols, 3 patterns
- Day / night minimum illumination: 0.01 Lux
- 8 privacy zone maskings
- IP66 weather proof standard
- Supporting mobile viewing

## A Wide Range of Video Management Software

All TeleEye NX network cameras and video server can work in conjunction with the following back-end video management software to build up a complete IP and mobile surveillance system.



### Multi-site Monitoring

TeleEye Multi-site Monitoring Software (WX-M4Lite & WX-M16) allows connections to multiple cameras or servers simultaneously via LAN or Internet.

- Up to 16 cameras monitoring
- Triplex operations & full screen display
- Digital video recording & electronic patrol
- Sophisticated event management

### Network Recording Software

TeleEye NXR is a complete Video Management and Recording Solution (NXR16, NXR32 & NXR64) designed for TeleEye NX network cameras and video server.

- Independent resolution & frame rate settings  
- no compromise on recording & network viewing performance
- Recording videos from up to 64 TeleEye NX devices in one PC
- Maximum recording frame rate: 200/240fps at D1; 400/480fps at CIF
- Supporting standard data redundancy solution, e.g. RAID
- WX-M16 live viewing from up to 16 TeleEye devices in one PC



### Central Monitoring Station

TeleEye Central Monitoring Station (CMS) offers central monitoring station managers new level of management control and so offering enhanced services to their clients.

- Design for multiple-site, multiple-user environment
- Assignable authorities for individual users
- Comprehensive site database, including key holder information, floor plan, reference images...
- Sophisticated event and activity logging
- British Standard BS 8418 compliance



### Mobile Video Monitoring

TeleEye M-monitoring Solution (M-303) gives you real time video viewing with your existing mobile phone.

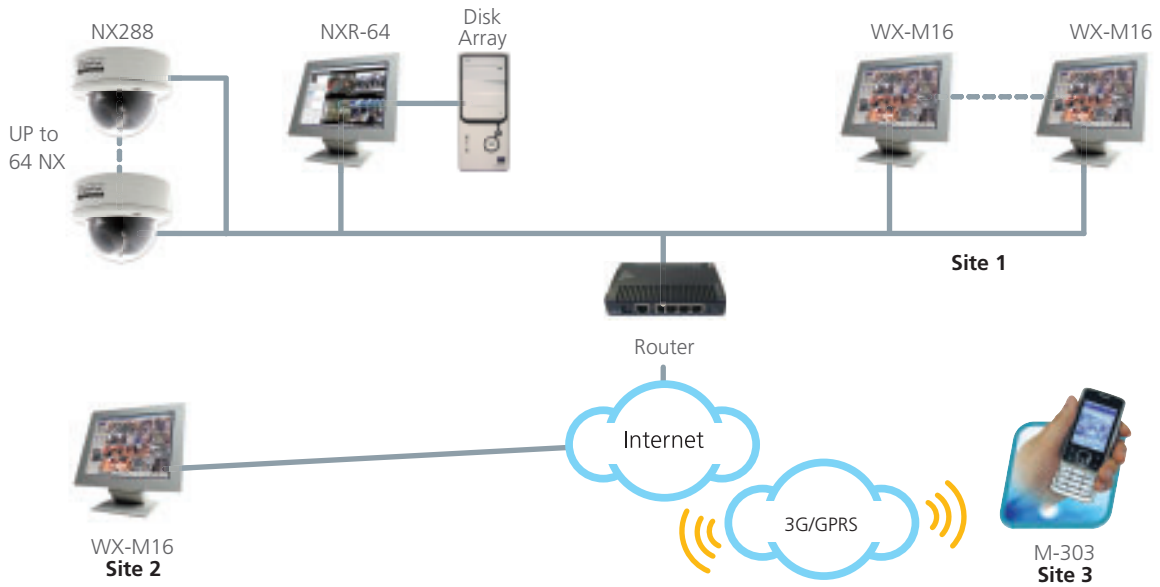
- Live viewing through HSDPA, UMTS, EDGE, GPRS, ...
- Telemetry control & event reporting



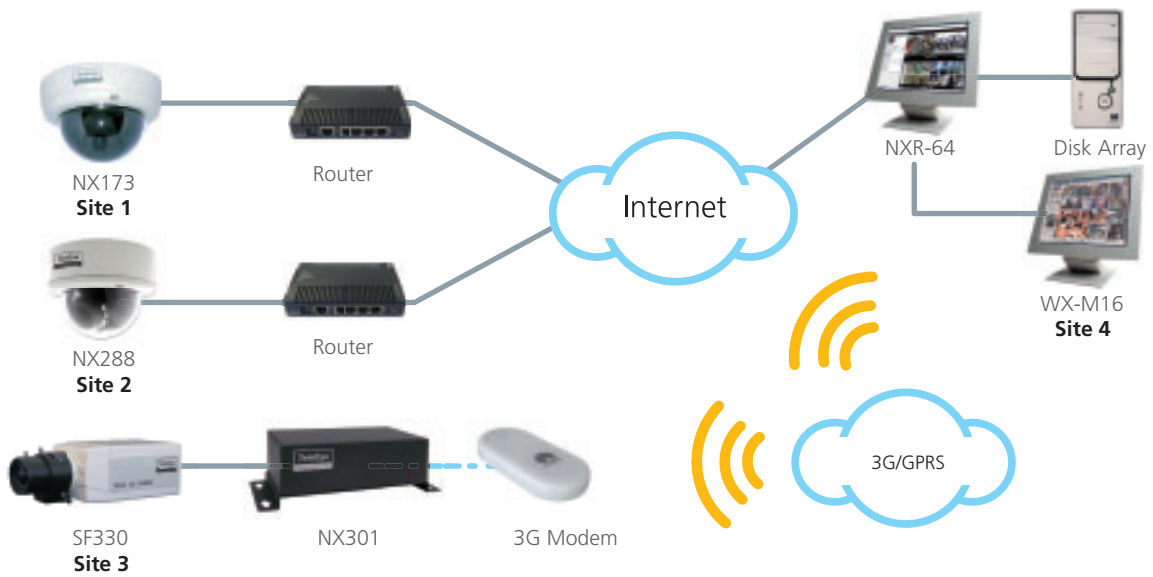
### Web Browser Monitoring

All TeleEye NX network cameras and video server come with a built-in web server. Live viewing and other operations can be carried out through using a standard web browser installed in any PC.

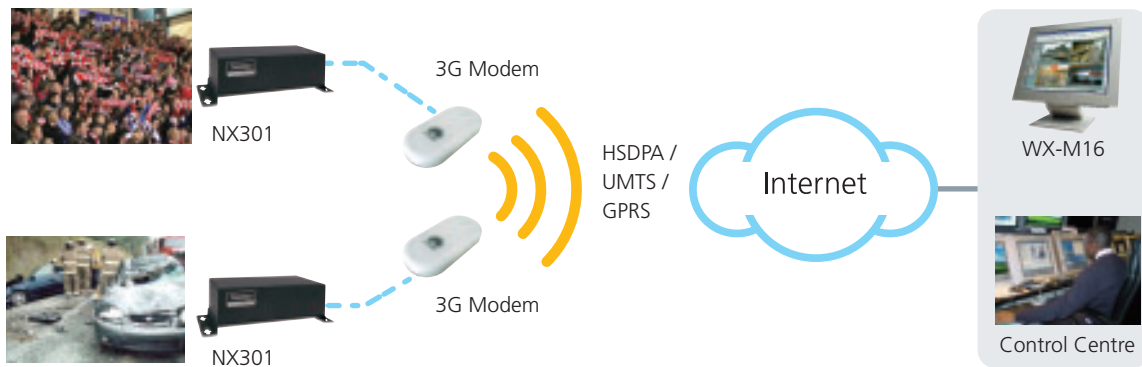
### Network Video Management & Recording System Configuration



### Simultaneous Multi-site Monitoring on Internet & Mobile Network



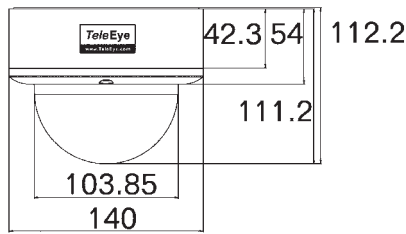
### Fast Deployment on Internet & Mobile Network



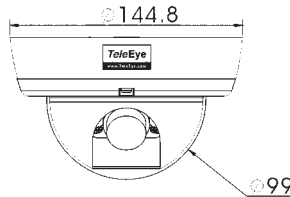
## Specifications

MODEL	NX301	NX288	NX173	NX599
	Single Channel Video Server	IR Vandal Resistant Network Dome	Vandal Resistant Network Dome	Network Speed Dome
	<b>VIDEO AND AUDIO</b>			
IMAGE SENSOR	–	1/3" colour CCD		1/4" colour CCD
RESOLUTION	(P): 720 x 576, 360 x 288; (N): 720 x 480, 360 x 240			
MINIMUM ILLUMINATION	–	0.0 Lux ( IR on )	0.5 Lux ( F=1.2 )	Day: 0.07 Lux Night: 0.01 Lux ( F=1.6 )
LENS	–	f=2.9 - 10mm Vari-focal auto-iris lens	f=3.6mm Fixed iris lens	f=3.5 - 91mm Optical: 36x / Digital: 12x
IR RANGE	–	15m	–	–
VIDEO INPUT	PAL / NTSC ( auto )		–	
AUDIO INPUT	1 channel, RCA, line level		–	
AUDIO OUTPUT	1 channel, RCA, line level		–	
AUDIO BIT RATE	7.2 / 32kbps		–	
VIDEO REFRESHING FRAME RATE	25/30fps			
	<b>TELEMETRY</b>			
RS485 OUTPUT	Yes	–		
PRIVACY ZONE MASKING	–			On / Off, 8 masks
AUTO RUN	–			128 Presets, 6 Patrols, 3 Patterns
	<b>CONNECTIVITY</b>			
NETWORK INTERFACE	Ethernet ( RJ-45 Wired, 10/100 Base-T )			
NETWORK PROTOCOL	TCP/IP, DHCP, HTTP, SNMP, DNS, SMTP			
CONCURRENT USERS	6			
WEB SERVER	Built-in			
USB INTERFACE	USB 2.0, 480Mbps	–		
	<b>VIDEO COMPRESSION</b>			
COMPRESSION	SMAC-M Multi-stream			
	<b>EVENT HANDLING</b>			
EVENT	External alarm, motion detection, video loss			
ACTION	Dial back, email, relay switch	Dial back, email		
ALARM INPUT	1			
RELAY OUTPUT	1	–		
	<b>POWER</b>			
POWER RATING	DC 12V, 12W (max)	DC 12V, 12W (max)	DC 12V, 7.4W (max)	AC 24V, 47W (max)
POWER OVER ETHERNET	Yes		–	
POWER OUT	Yes ( 12V DC, 500 mA )	–		
	<b>OPERATING ENVIRONMENT</b>			
AMBIENT TEMPERATURE	0°C – 50°C			-22°C – 60°C
RELATIVE HUMIDITY	<85% ( no condensation )	–		
	<b>MECHANICAL DESIGN</b>			
WEATHER PROOF	–	IP66		
VANDAL RESISTANT	–	Yes	optional	
DIMENSION	164 mm x 88 mm x 50 mm		–	
NET WEIGHT	0.45kg	1.02 kg	0.63 kg	3.6 kg

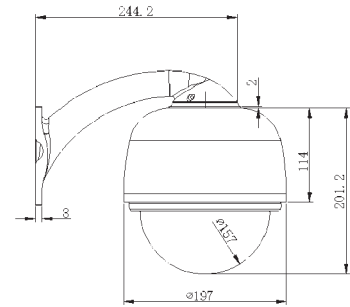
## Dimension



NX288



NX173



NX599

## IP & Mobile Surveillance Powered by SMAC-M Compression

SMAC-M is a revolutionary video compression technology developed by TeleEye specially for IP & mobile video surveillance application. SMAC-M is one of the first video coder in the market that uses multi-stream coding technology to solve the conflicting requirements of simultaneous recording and remote surveillance.

### Key benefits:

- Outputs 5 independent digital video streams at different bit rates covering all commercial communication channels
- Offers simultaneous efficient remote video surveillance & DVD-quality recording
- Records 60% longer than MPEG-4 at the same picture resolution, quality and frame rate
- Transmits 50% faster than MPEG-4 on ADSL

### Traditional Video Coding Technology



### SMAC-M: Multi-stream Video Coding Technology



## PC Requirements

	WX-30	WX-M4Lite	WX-M16	CMS
CPU:	Pentium IV 2.4GHz or above		Pentium® Dual-Core 2.2GHz or above	
RAM:	1GB or above			2GB or above
HDD:	1 GB of free disk space or above			
Display:	1024x768, true colour			
OS:	MS Windows XP, Vista			



www.TeleEye.com

### TeleEye Group

#### Signal Communications Limited

Units 202-203, 2/F, Laford Centre, 838 Lai Chi Kok Road, Kowloon, Hong Kong  
International: (852) 2995 5996 Hong Kong: (852) 2995 5992 Fax: (852) 2995 5901  
Email: info@TeleEye.com Web: www.TeleEye.com

**TeleEye Europe Ltd.**  
Tel: (44) 1628 776061  
Fax: (44) 1628 407399  
Email: ukinfo@TeleEye.com

**TeleEye (S) Pte Ltd.**  
Tel: (65) 6745-3921  
Fax: (65) 6742-1965  
Email: sales@TeleEye.com.sg

**TeleEye Hrvatska**  
Tel: (385) 52-383-101  
Fax: (385) 52-383-101  
Email: info@TeleEye.hr  
Web: www.TeleEye.hr

**TeleEye (South Africa) (Pty) Ltd**  
Tel: (27) 11 557 9200  
Fax: (27) 11 706 3847  
Email: info@TeleEye.co.za  
Web: www.TeleEye.co.za

**TeleEye Digital Technology (Shenzhen) Co., Ltd.**  
Tel: (86) 755-2671-2122  
Fax: (86) 755-2671-2287  
Email: info@TeleEye.com.cn

**TeleEye (Mauritius) Ltd.**  
Tel: (230) 686 5238  
Fax: (230) 698 2179  
Email: info@TeleEye.com.mu  
Web: www.TeleEye.com.mu

**TeleEye Philippines Inc.**  
Tel: (63) 2-3650897  
Fax: (63) 2-3651446  
Email: contact@TeleEye.com.ph  
Web: www.TeleEye.com.ph