

TeleEye[®]

M-monitoring Solution

Vision in Your Hands

M-monitoring Solution

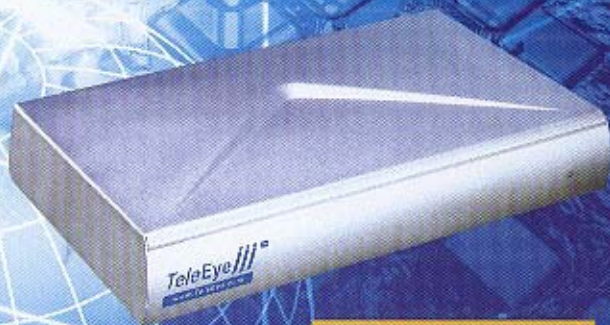
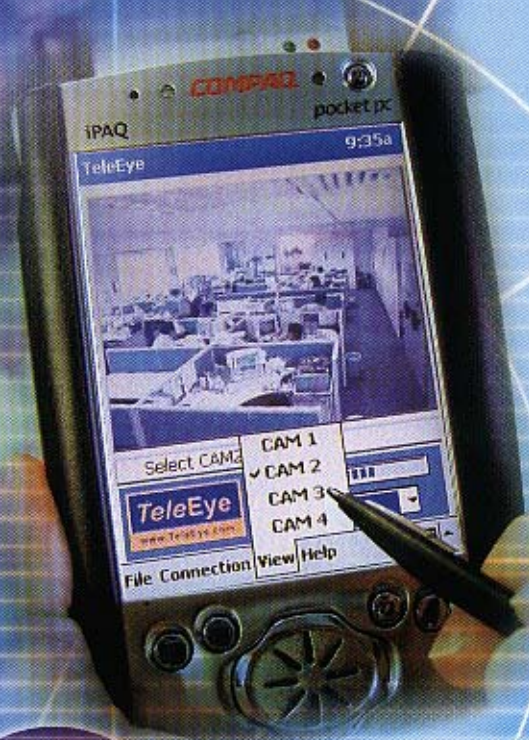
TeleEye M-monitoring Solution helps you to quickly, easily and conveniently access remote live video of your business with a PDA and make decision while you can't physically be there.

With **TeleEye M-monitoring Solution**, you can enjoy high quality remote video streaming on PDA when using the latest 2.5G mobile network at speed up to 64kbps. It operates on other wireless communication technologies such as :

- CDMA (64kbps)
- PHS (64kbps)
- PCS (14.4kbps)
- GSM (9.6kbps / 14.4kbps)
- HSCSD (43.2kbps)
- GPRS (64kbps or higher)

For indoor application, **TeleEye M-monitoring Solution** also works well with wireless LAN technology (IEEE 802.11b at 11Mbps) and gives real time video.

Now, retail managers can view daily operation of their retail outlets while travelling between shops. Project managers can check progress of their construction sites while dealing with suppliers. Property managers can monitor properties while patrolling between buildings.



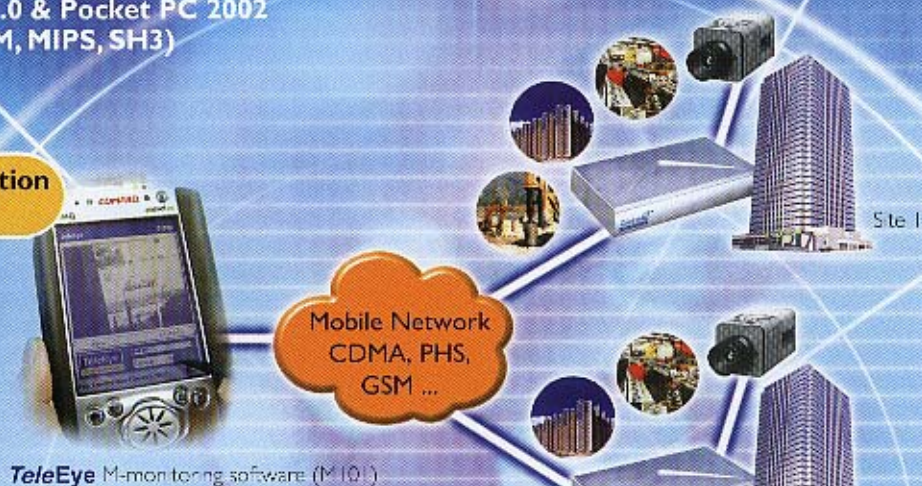
TeleEye

www.TeleEye.com

Features:

- Video transmission via mobile network-CDMA, PHS, PCS, GSM, HSCSD, GPRS
- Fast video transmission up to 25/30 fps via wireless LAN
- 4, 8 and 16 video channels
- High picture resolution up to 320 x 240 pixels
- Password protection
- Alarm notification
- Multiple-user connection
- Telemetry control
- Pre- & post-alarm recording
- Save current image as bitmap
- Support "sure LINK" technology
- Transmitter switch control
- PDA on MS Windows CE 3.0 & Pocket PC 2002
(Processors supported: ARM, MIPS, SH3)

TeleEye M-Monitoring Solution on Mobile Network



TeleEye M-monitoring software (M101)

M-monitoring Solution

TeleEye M-Monitoring Solution on Wireless LAN



TeleEye M-monitoring software (M101)
on PDA with wireless LAN card

Viewer PC with WB53-AD

Signal Communications Limited

A member of TeleEye Group

Unit 216-7, Tech Centre, 72 Tat Chee Avenue, Kowloon, Hong Kong
Tel: (852) 2319 2151 Fax: (852) 2319 2550
Email: info@TeleEye.com Website: www.TeleEye.com

Copyright © 2002 Signal Communications Limited. Features and specifications are subject to change without prior notice. TeleEye is a trademark of Signal Communications Limited and is registered in China, Hong Kong, U.S. and other countries. All other trademarks are the property of their respective owners.

TeleEye

www.TeleEye.com