



EX stainless steel PTZ Camera Station

For use in highly corrosive environments  
AISI316L Stainless Steel construction  
Easy installation and maintenance  
Maximum load 25 kg  
Explosion proof certified

# EXPTZ Series



- EXPTZD  
Dual PTZ camera station

## MODELS

EXPTZWW	Electro-polished AISI316L Stainless Steel PTZ camera station. IP66/IP67. Sunshield, heater/demister, wiper, for Day/Night cameras (usable Ø75 mm). Built-in telemetry receiver. Variable speed motors. Fixed cable entry (M25x1,5) with base mount junction box.
EXPTZIR	Electro-polished AISI316L Stainless Steel PTZ camera station. IP66/IP67. Sunshield, heater/demister, Germanium front window (usable Ø50 mm; thickness 8 mm; AR/DLC coating). Built-in telemetry receiver. Variable speed motors. Fixed cable entry (M25x1,5) with base mount junction box.
EXPTZD	Electro-polished AISI316L Stainless Steel PTZ camera station. IP66/IP67. Dual housing: sunshield, heater/demister, wiper for Day/Night cameras (usable Ø75 mm); sunshield, heater/demister, Germanium front window (usable Ø50 mm; thickness 8 mm; AR/DLC coating) for thermal imaging cameras. Built-in telemetry receiver. Variable speed motors. Fixed cable entry (M25x1,5) with base mount junction box.

*Versions with longer camera housings are available (-L)*

## ELECTRICAL

**Supply voltage:** 24 VAC  
**Power consumption:** 95 W MAX (120W MAX for EXPTZD)

## CERTIFICATIONS

**Weatherproof standard:** IP66/IP67  
**ATEX certification:** Ⓜ II 2 G Ex d op pr IIC T6 T<sub>amb</sub> -40°C to +55°C  
CE compliant

- The EXPTZ Series is a reliable PTZ camera station specifically designed for Hazardous Area applications, especially for every situation where corrosive agents may quickly damage standard aluminum-steel camera stations. EXPTZ provides full internal cabling through the integrated base junction box and can be controlled via Pelco protocol thanks to the optional integrated RX250DC telemetry receiver. EXPTZ camera stations are equipped with the latest generation zoom module day/night and thermal imaging cameras, but they are available for customer specified cameras. AISI316 stainless steel mounting brackets are available.

## TECHNICAL SPECIFICATIONS

### GENERAL & MECHANICAL

<b>Construction:</b>	AISI316L Stainless Steel
<b>Finish:</b>	Electro-polished
<b>Operating Temperature:</b>	-20° +55°C (-4° +131° F)
<b>Dimensions and mounting:</b>	See drawings next page
<b>Pan Angle:</b>	360° continuous rotation
<b>Pan Speed:</b>	0 – 18°/second
<b>Pan Torque:</b>	80 Nm
<b>Tilt Angle:</b>	180° Max (+/- 90°)
<b>Tilt Speed:</b>	0 – 9,5°/second
<b>Tilt Torque:</b>	107 Nm
<b>Backlash:</b>	<0,1°
<b>Maximum load:</b>	25 kg

### WEIGHT

Model	Weight [kg]
EXPTZWW	46
EXPTZIR	45
EXPTZD	55

**Rotation Angle:**  
Electronically set via RX250DC telemetry receiver.

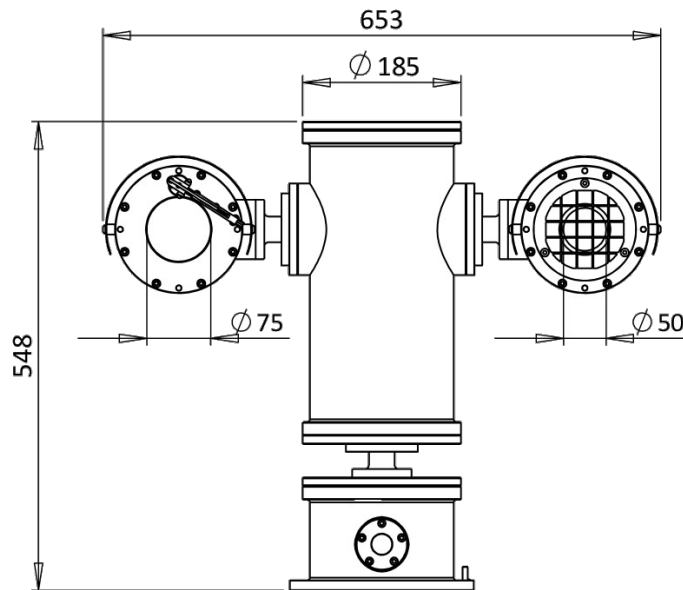
**Mounting:** 4xØ11 on 195mm PCD  
**Cable entries:** 1 M25x1,5 cable entry

### MOUNTING ACCESSORIES

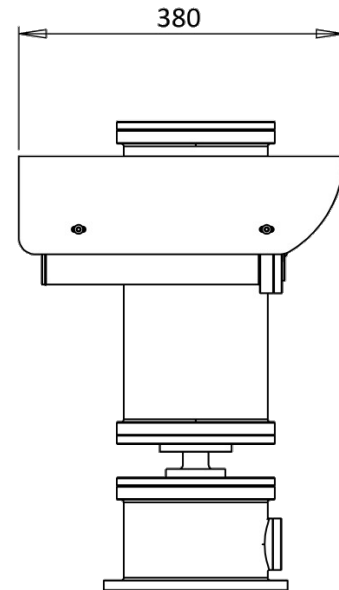
EXSSBKPTZ Stainless Steel wall mounting bracket for EXPTZ Series

# Dimensions

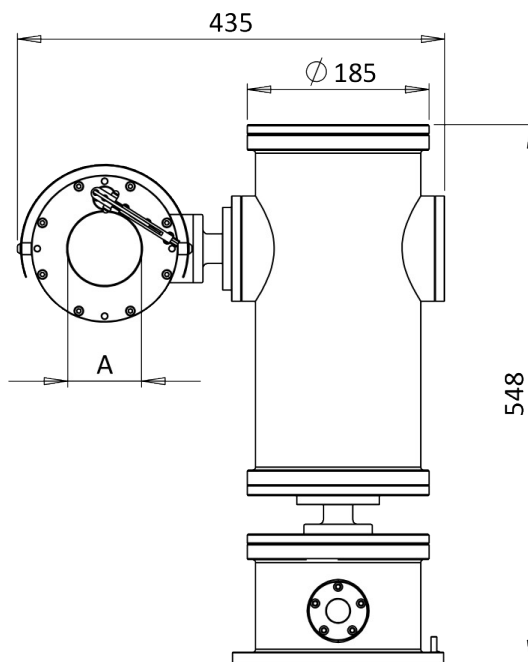
**EXPTZD FRONTAL VIEW**



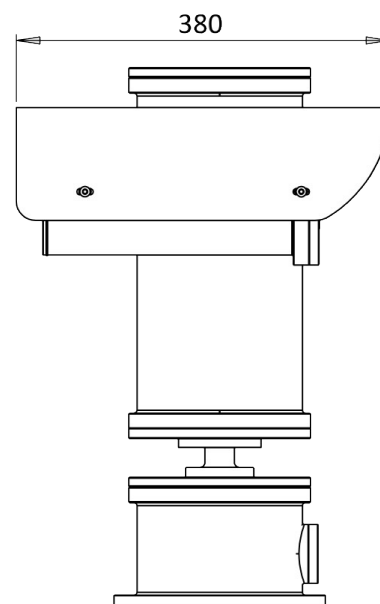
**EXPTZD SIDE VIEW**



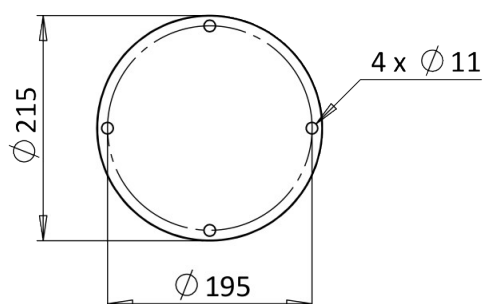
**EXPTZ FRONTAL VIEW**



**EXPTZ SIDE VIEW**



**MOUNTING PATTERN**



**MAX INTERNAL DIMENSIONS**

Camera	Internal dimensions	Internal diameter
Thermal imaging	70x70x190	85
Day/Night	70x70x160	85

Dimensions in millimeters - Tolerances according QMS - Design and product specifications subject to change without notice