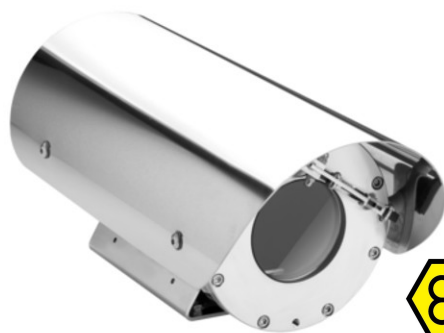




EX stainless steel camera housing

EX129 Series

AISI316L Stainless Steel construction
For use in highly corrosive environments
Easy installation and maintenance
Wiper and washer version available
Explosion proof certified



- EX129WW
Housing with wash wiper

MODELS

EX129 ¹	Housing (L=250 mm)+Sunshield+Heater
EX129-L ¹	Housing (L=500 mm)+Sunshield+Heater
EX129WW ¹	Housing (L=250 mm)+Sunshield+Heater+Wiper
EX129WW-L ¹	Housing (L=500 mm)+Sunshield+Heater+Wiper
EX129IR ²	Housing (L=250 mm)+Sunshield+Heater+Protective Guard
EX129IR-L ²	Housing (L=500 mm)+Sunshield+Heater+Protective Guard

¹ Usable front window diameter: 75 mm, thickness: 12 mm
² Usable front window diameter: 50 mm, thickness: 10 mm

GENERAL & MECHANICAL

Construction: AISI316L Stainless Steel
Finish: Electro-polished
Operating Temperature: -20° +55°C (-4° +131° F)
Dimensions: See drawings next page

Weight [kg]

Model	Unit	Package
EX129/EX129IR	9	10
EX129-L/EX129IR-L	12	13
EX129WW	10	11
EX129WW-L	13	14

Mounting: See drawings next page
Cable entries: 1 M20x1,5 cable entry

- Tecnovideo EX129 Series includes a full series of stainless steel stand-alone camera stations specifically designed for Hazardous Area applications. The design of the housing ensures the best protection from external agents and an easy installation and maintenance service.

EX129 camera stations are equipped with the latest generation zoom module day/night and thermal imaging cameras, but they are available for customer specified cameras.

The sunshield protects the housing from the sunlight, from heat and dirt, while the heater demisters the housing front window if needed.

Wash wiper version available.

IR version for thermal imaging cameras available.

Two lengths available: 250 and 500 mm.

TECHNICAL SPECIFICATIONS

ELECTRICAL

Thermostatically controlled Heater:

T[°C] ON = 15 ± 4°C, T[°C] OFF = 23 ± 3°C,

Available voltages: 24, 110, 240 VAC (specified at order)

Wiper:

Available voltages: 24, 110, 240 VAC (specified at order)

Max internal power consumption:

25W

CERTIFICATIONS

Weatherproof: IP66/IP67

Rating: Ⓜ II 2 G Ex d op pr IIC T6 T_{amb} -40°C to +55° C

Ⓜ II 2 D Ex tb IIIC T85°C Db IP66/IP67

ATEX Standards: EN 60079-0:2012; EN 60079-1:2007;

EN 60079-28:2006; EN 60079-31:2009

IECEx Standards: IEC 60079-0:2011; IEC 60079-1:2007-04;

IEC 60079-28:2006-08; IEC 60079-31:2008

CE compliant

MOUNTING ACCESSORIES

EXSSBK129

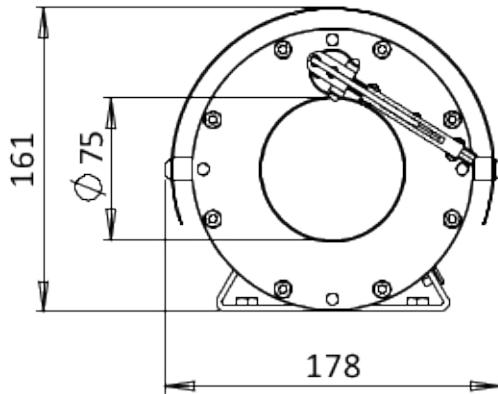
Stainless Steel wall mounting bracket for EX129 Series

EXSSPM129

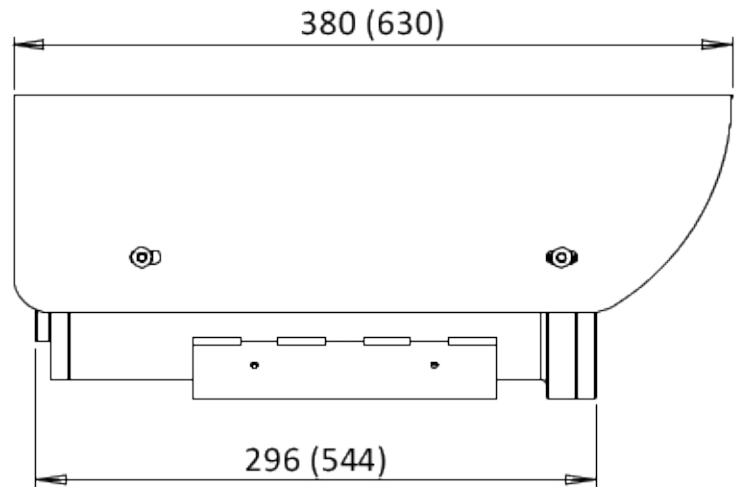
Stainless Steel pole mount adapter for EXSSBK129

Dimensions

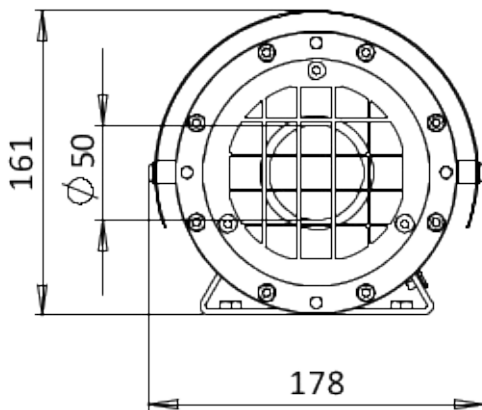
FRONTAL VIEW



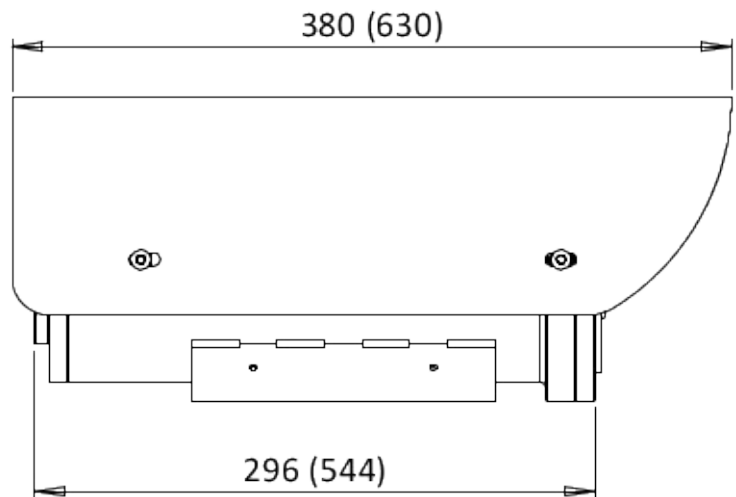
SIDE VIEW



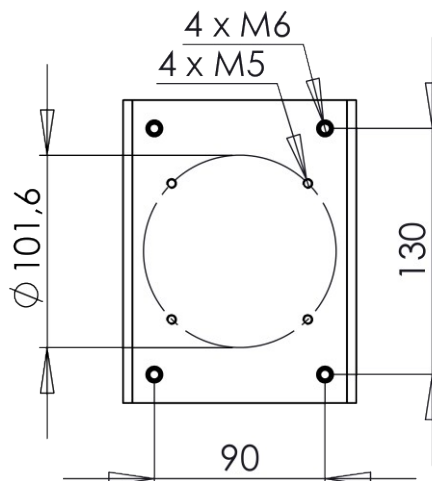
IR VERSION FRONTAL VIEW



IR VERSION SIDE VIEW



MOUNTING PATTERN



Dimensions (in brackets) referred to models 500 mm tube length

MAX INTERNAL DIMENSIONS

Model	Internal dimensions	Internal diameter
EX129/EX129IR	70x70x190	85
EX129-L/EX129IR-L	70x70x440	85
EX129WW	70x70x160	85
EX129WW-L	70x70x410	85

Please contact us if bigger cameras/zoom lenses are needed.

Dimensions in millimeters - Tolerances according QMS - Design and product specifications subject to change without notice