



Stainless Steel Camera Housing

129 Series

AISI316L Stainless Steel construction
For use in highly corrosive environments
Easy installation and maintenance
Wiper and washer version available
Weatherproof standard IP67
Refined and modern design



■ 129SH + SSBK129
Housing with sunshield and wall mounting bracket



■ 129SH
Internal view

■ In outdoor locations, the presence of a corrosive atmosphere can cause rapid deterioration and a premature replacement of the camera and lens if not properly protected. In these areas, a stainless steel camera housing is needed.

The 129 series camera housing is constructed entirely from AISI316L stainless steel, for use in Industrial and Marine environments and in general where corrosive agents can cause a rapid deterioration of a standard aluminium-steel housing.

Thanks to its competitive price, the 129 series camera housing can be also used as a substitute for an aluminium housing, where high level quality and refined design are requested.

The housing is engineered to ensure the best protection from external agents and to allow an easy installation and maintenance.

The opening of the housing, even when installed, is quick and easy. The outer body can be removed by unscrewing only two screws in the rear flange, while the internal rail, where the camera is mounted, doesn't move from its position, making easier the adjustment of camera and lens.

Two different lengths of the housing are available (360 mm and 460 mm).

Accessories available:

- SSBK129: wall mounting bracket with swivel joint
- SSCM129: corner mount adaptor
- SSPM129: pole mount adaptor
- Thermostatically controlled heater
- Wiper and washer (model 129WW)
- Liquid cooling system

Technical Specifications

MODELS

129*	Housing (Length=360mm)
129-L*	Housing (Length=460mm)
129SH*	Housing (360mm)+Sunshield+Heater
129SH-L*	Housing (460mm)+Sunshield+Heater
129WW**	Housing (360mm)+Sunshield+Heater+Wiper
129WW-L**	Housing (460mm)+Sunshield+Heater+Wiper
129AB	Housing (360mm)+Front window air barrier. Sunshield+Heater optional
129AB-L	Housing (460mm)+Front window air barrier. Sunshield+Heater optional
129IR50***	Housing (360mm) UW: 50
129IR50-L***	Housing (460mm) UW: 50
129SHIR50***	Housing (360mm) UW: 50+Sunshield+Heater
129SHIR50-L***	Housing (460mm) UW: 50+Sunshield+Heater
129WWIR50***	Housing (360mm) UW: 50+Sunshield+Heater+Wiper
129WWIR50-L***	Housing (460mm) UW: 50+Sunshield+Heater+Wiper
129IR70***	Housing (360mm) UW: 70
129IR70-L***	Housing (460mm) UW: 70
129SHIR70***	Housing (360mm) UW: 70+Sunshield+Heater
129SHIR70-L***	Housing (460mm) UW: 70+Sunshield+Heater
129WWIR70***	Housing (360mm) UW: 70+Sunshield+Heater+Wiper
129WWIR70-L***	Housing (460mm) UW: 70+Sunshield+Heater+Wiper
129ABIR70***	Housing (360mm) UW: 70+Front window air barrier. Sunshield+Heater optional
129ABIR70-L***	Housing (460mm) UW: 70+Front window air barrier. Sunshield+Heater optional

- * Usable front window diameter: 90mm, thickness 5mm.
 ** Vandal resistant glass 12mm thickness, 72mm diameter.
 *** UW=Usable window diameter; Germanium window, thickness 3mm, AR/DLC coating.

ELECTRICAL

Thermostatically controlled Heater:

T[°C] ON = 15 ± 4°C, T[°C] OFF = 23 ± 3°C

Available voltages: 24,110, 240 VAC (specified at order)

Power consumption: 10W

Wiper:

Available voltages: 24VAC (8W), 110VAC (8W), 240VAC (8W), 24VDC (4W) (specified at order)

Washer Pump:

A wide range of water reservoirs with different pumping height capabilities is available:

WP5-5m	5 Litres tank, 5 metres delivery head
WP5-10m	5 Litres tank, 10 metres delivery head
WP10-5m	10 Litres tank, 5 metres delivery head
WP10-10m	10 Litres tank, 10 metres delivery head
WP25-5m	25 Litres tank, 5 metres delivery head
WP25-10m	25 Litres tank, 10 metres delivery head
WP25-15m	25 Litres tank, 15 metres delivery head
WP25-10m-SS*	25 Litres tank, 10 metres delivery head
WP25-15m-SS*	25 Litres tank, 15 metres delivery head

* Entirely made in AISI316L stainless steel

GENERAL & MECHANICAL

Construction: AISI316L Stainless Steel
Finish: Electro-polished

External Dimensions

Model	HxW [mm]	L [mm]
129SH (sunshield included)	159x140	431
129SH-L (sunshield included)	159x140	531

Internal dimensions, Maximum camera + lens size:

Model	HxW [mm]	L [mm]
129 without heater	80x80	351
129 with heater	80x80	289
129-L without heater	80x80	451
129-L with heater	80x80	389
129WW	80x80	251
129WW-L	80x80	351

Weight [kg]

Model	Unit	Package
129SH	6	7
129SH-L	7	8
129WW	7	8
129WW-L	8	9

Cable Entry:

2 M20x1,5 nickel plated brass cable glands (included).
 Standard cable diameter 6-10mm, upon request cable diameter 8-12mm. Different cable entries are available to meet every installation requirement.

RECOMMENDED MOUNTING ACCESSORIES

SSBK129:	AISI316L Stainless Steel wall mounting bracket with swivel
SSPM129:	AISI316L Stainless Steel Pole Mount adapter
SSCM129:	AISI316L Stainless Steel Corner Mount adapter

CERTIFICATIONS

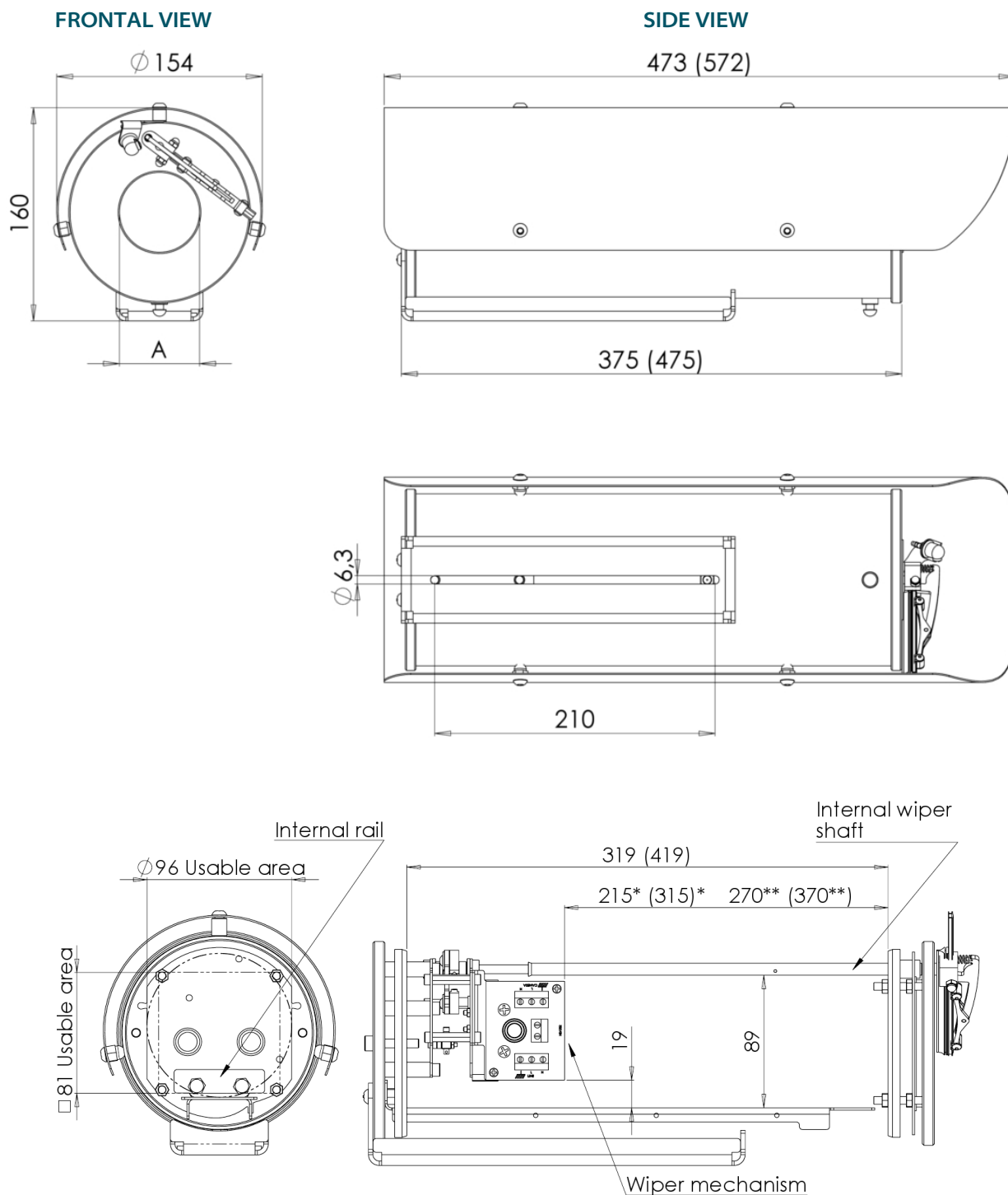
Weatherproof standard: IP67

CE Compliant

RECOMMENDED SPARE PARTS AND ACCESSORIES

WB129	Complete wiper blade assembly
WBK129	Wiper blade spare part (only rubber blade and support)
ABFL01	Air filtering battery 20 – 5 – 0.1 micron to be used with air barrier front window flange
HK129	Heater kit 10W (24VAC/DC, 110 VAC or 240 VAC available)
MK129	Maintenance Kit with O-ring seals, screws seals, screws, desiccant bags.

Dimensions



Dimensions in brackets refer to models 129-L

Available measures for "A"

A = **90** mm for 129, 129-L, 129SH and 129SH-L

A = **72** mm for 129WW and 129WW-L

A = **70** mm for 129AB, 129AB-L and 129IR70 models (germanium window)

A = **50** mm for 129IR50 models (germanium window)

* Length measure for models with sunshield, heater and wash wiper

** Length measure for models with sunshield and heater

Dimensions in millimeters - Design and product specifications subject to change without notice