

Indoor Fixed Dome Camera

***High
Resolution***
540 TV Lines

***Vari-focal
Lens***



new

Manual Triple-Axis
(Pan & Tilt & Rotation)

Tamron High Performance Optics

Tamron Indoor Fixed Dome Camera

Striking a Balance between High Image Quality and Low Power Consumption

Tamron has staunchly followed through on its commitment to high image quality by consistently designing the lens optics and image sensors. The Tamron Indoor Fixed Dome Camera ensures high precision image quality.

Equipped with Tamron's Original High-quality Vari-Focal Lens



Optical systems designed to provide high resolution performance

Vari-focal lenses employing aspherical lens elements deliver quality images with high contrast over the entire image field from the center to the periphery.



Optimum angle of view setting can be selected from a versatile focal length range from wide-angle to telephoto

Selecting an optimum angle of view matching the requirements of the installation environment is easy since Tamron Indoor Fixed Dome Camera are equipped with Tamron's original Vari-Focal lens.



F/1.2 fast maximum aperture

Tamron Indoor Fixed Dome Camera's built-in Vari-Focal lenses boast a high F/1.2 specification – the fastest maximum aperture among lenses in the same class.

- Multi-layer coatings minimize ghosting and flare.
- Equipped with DC auto iris mechanisms.

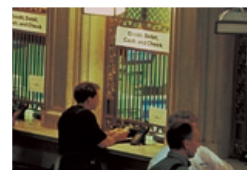


Wide: 2.8mm



Tele: 10.5mm

* Note: Images are for illustrative purposes only.



F/1.4



F/1.2

High-performance Camera Design Derives Maximum Lens Performance



Equipped with 1/3-inch CCDs to Assure High 540 TV Lines Horizontal Resolution Performance

The 1/3-inch type CCD image sensors employed in Tamron Indoor Fixed Dome Camera have an effective pixel count of 380,000* to provide the horizontal resolution performance of 540 TV lines, which delivers clear images.
(*440,000 pixels in case of PAL models)



Minimum illumination of 0.1 lux

Tamron Indoor Fixed Dome Camera excel in dimly-lit conditions since their high-performance CCD image sensors support surveillance at a low 0.1 lux illumination.



Backlight compensation

The backlight compensation feature compensates for situations where subject images appear black due to strong light from the sun or other light sources behind the subject.



AGC function

The AGC (Automatic Gain Control) function electronically adjusts the sensitivity to an appropriate brightness level for properly exposed subjects.



AWB function

The AWB (Automatic White Balance) function provides automatic adjustment of white balance to ensure good color.

Tamron Indoor Fixed Dome Camera Lineup

DC28105N-12 (NTSC)
2.8-10.5mm F/1.2 DC12V



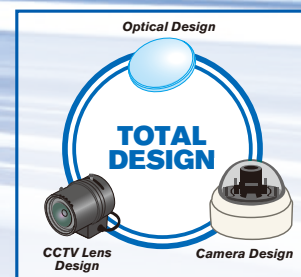
DC28105P-12 (PAL)
2.8-10.5mm F/1.2 DC12V



Fixed Dome Camera

Image Quality and User-friendliness

commitment to provide ultimate image quality
the camera module to the highest standards.
on surveillance for a wide variety of indoor applications.



Control Mechanisms Deliver Smooth Control and Ultimate Ease of Use



Manual triple-axis angle control

The manual triple-axis angle control mechanism supports smooth control in the range of 90 degrees horizontally, 180 degrees vertically and 76x2 degrees rotationally, allowing for the smooth and accurate setting of a desired angle of view no matter where the camera is installed – on the ceiling or on the wall surface.



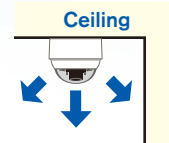
Equipped with locking mechanisms

Vertical and rotation angle adjustment mechanisms are equipped with locking mechanisms, preventing movement of the camera system due to micro vibrations after installation.



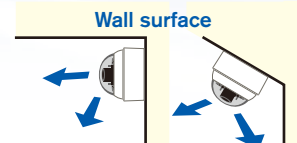
Grip

A gripping mechanism on the rotation mechanism allows for easy set-up.



[When installed on the ceiling]

The camera direction can be adjusted to almost any direction with dual axis adjustments.



[When installed on an inclined wall surface]

In some cases, adjusting the camera angle to an appropriate horizontal direction is impossible unless the camera is equipped with a triple axis adjustment mechanism.



Locking Mechanism



Grip

Other Features



Simple design

Simple outer design optimized for indoor installation in offices or stores.



Gang-box screws

The mount for wall surface installation has screw holes for gang-box installation.



Compact design

The camera measures only 120mm in overall diameter and 98.5mm in height.

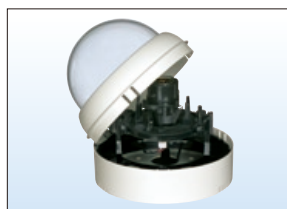


CE/FCC-rule compatible



One-touch cover installation

The dome cover can be mounted with a one-touch action.



Environmentally-friendly Design



Strict chemical substance control regulations

Tamron has an established chemical substance control regulations that meet RoHS, REACH and WEEE initiatives, to provide safe and environmentally-friendly products.



DfE (Designs for Environment)

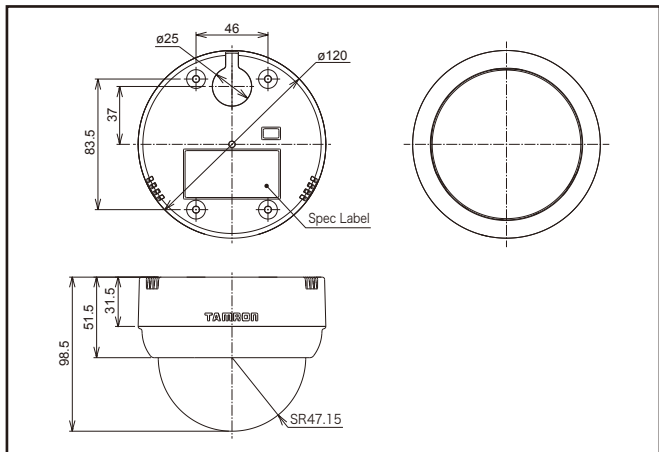
Tamron pursues DfE designs for energy and resource savings by reducing the numbers of parts and employing common parts whenever possible.



SPECIFICATION

	DC28105N-12 2.8-10.5mm F/1.2 NTSC DC12V	DC28105P-12 2.8-10.5mm F/1.2 PAL DC12V
Camera		
CCD Image Sensor	1/3 inch CCD	
Effective Picture Element	380K pixels 768 (H) x 494 (V)	440K pixels 752 (H) x 582 (V)
TV System	NTSC	PAL
Video Output	NTSC : 525 line 2:1 Interlace, Horizontal:15.734 KHz / Vertical: 60 Hz	PAL : 625 line 2:1 Interlace, Horizontal:15.625 KHz / Vertical: 50 Hz
Sync System	Internal	
Horizontal Resolution	540TV Lines	
S/N Ratio	50 dB (AGC OFF)	
Minimum Illumination	0.1 Lux / F1.2 (50 IRE)	
Electronic Shutter	AUTO (1/60sec ~ 1/100,000sec)	AUTO (1/50sec ~ 1/100,000sec)
Auto Gain Control	AGC ON (30dB)	
Back Light Compensation	BLC ON (Center region)	
White Balance	AWB	
Lens		
Zoom Magnification	x3.75	
Focal Length	2.8mm ~ 10.5mm	
Aperture Ratio	F/1.2	
Angle of view	Horizontal: 99.5° / Vertical: 73.2° *Lens Specification	
Minimum Focus Range	0.3m *Lens Specification	
Mechanism		
Angle Control	Manual 3-AXIS	
Range	Pan: 90deg / Tilt: 180deg / Rotation: 76deg x2	
General		
Power Requirement	DC 12V ±10%	
Power Consumption	Max 2.3W	
Temperature Range	Operation : -10°C ~ +50°C	
Weight	TBA	
Safety, Ratio STD	FCC	CE
Size	Diameter ø120mm / Height 98.5mm	

DIMENSIONS



 **Caution :** Please read the instruction manual carefully before using the camera.

TAMRON®

*Manufacturer of precise and sophisticated optical products
for a broad range of industries.*



Quality Assurance Activities:At Tamron, quality management activities are performed in compliance with ISO9001:2000 not only to assure product quality but to enhance customer satisfaction.

Environmental Protection: We recognize the significance of our social responsibilities. Tamron promotes corporate activities that protect the earth's environment through the establishment of a quality assurance system that is compliant with ISO14001.

TAMRON CO., LTD. <http://www.tamron.co.jp/cctv>

1385, Hasunuma, Minuma-ku, Saitama-shi, Saitama 337-8556 JAPAN
Tel: +81-48-684-9129 Fax: +81-48-683-8594 E-mail: tokki@tamron.co.jp

TAMRON USA, INC. <http://www.tamron.com>

10 Austin Boulevard, Commack, NY 11725, USA Tel: +1-631-858-8400 Fax: +1-631-543-3963

TAMRON Europe GmbH. <http://www.tamron.de>

Robert Bosch-Str. 9, 50769 Cologne, GERMANY
Tel: +49-221-970325-0 Fax: +49-221-970325-4



Specifications subject to change without notice 2009,8
IFDC-EGUS-111-U-0908-0030