



DVA CCTV Appliance

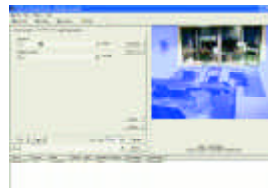
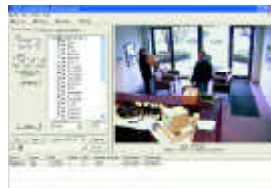
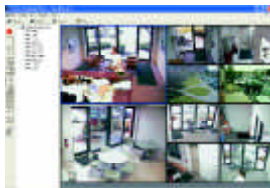
Introducing DVA full-featured, cost-effective digital CCTV

High-Quality CCTV That's Easy to Use. DVA by Integral Technologies is a low-cost, powerful digital CCTV recorder that provides unattended recording, remote administration and remote operation. DVA is an ideal solution for providing cost-effective, high-quality video, customized recording options, and simple operation.

Flexible Functionality. Up to 8 cameras can be connected to the DVA, with video captured at 720x240 resolution (NTSC) and compressed to a full CCIR broadcast resolution of 720 pixels with user definable compression ratios. View video in multiple configurations, with graphical indicators alerting the operator to motion events.

Easy to Install. DVA is easy to install and operate, supported by thorough and user-friendly printed documentation and online help. Simply connect cameras and a network cable, and then turn on the DVA system. The DVA system automatically begins recording upon startup.

Remote Access. Access to DVA is available over a TCP/IP network. Simply install the easy-to-use DVA RemoteView™ software on a networked client computer to remotely configure and operate the DVA system. Multiple DVAs can be accessed from any single terminal (even your laptop computer).



The easy-to-use RemoteView software, shipped free with every unit, provides flexible configuration and viewing options.



DVA CCTV Appliance

DVA CCTV Appliance

DVA Features

- Linux-based
- Full remote operation and administration through included software
- 4 or 8 video inputs
- Wavelet video compression
- Motion recording
- Flexible and easy searching of recorded video
- SmartSearch of specific areas of video window
- Export single images or video clips
- Multiple video window configurations
- Adjustment of brightness, contrast, etc.
- Selectable peak bandwidth usage
- Watermarking for authentication of recorded video
- Compatible with First Line DVX systems
- Simultaneous connection to multiple DVA and DVX units
- Selective camera availability
- Simultaneous playback from multiple cameras
- Image enhancement
- Additional video window configurations

DVA — Proven, Market-Leading Technology for Everyone

In a sea of look-alike products, the DVA offers much more than entry-level digital CCTV technology. The DVA CCTV surveillance system is manufactured by Integral Technologies, maker of the First Line family of CCTV products. Integral Technologies developed the DVA to provide businesses with cost-effective digital CCTV technology that is designed to evolve as the user's needs grow.

Businesses can start with a single DVA unit and add additional DVAs to build a networked security system as their business expands. The DVA is even networkable with Integral Technologies' DVX products. In a 2001 report, J.P. Freeman recognized Integral Technologies' digital CCTV products as the number one digital disk recorder based on market share. With the introduction of the DVA, everyone can now take full advantage of the convenience and efficiency of digital CCTV.

Find out more about all of Integral Technologies' digital CCTV products. Visit www.integraltech.com.

Added Security

Since the live and recorded video from the DVA is designed to be viewed remotely, the system can be easily locked away for added security.

Ordering Information

Part #	Item	Part #	Item
4100-00020	DVA 420	4200-00020	DVA 820
4100-00060	DVA 460	4200-00060	DVA 860
4100-00120	DVA 4120	4200-00120	DVA 8120

Specifications

General

- Video standard: NTSC, PAL
- Compression: Wavelet
- Video inputs: 4 or 8
- Resolution: 720x240 NTSC (720x288 PAL)
- Image size: 7-40KB
- Recording speed (images per second): 12 NTSC, 10 PAL
- Video storage: 60 days of normal recording*
- Networking: TCP/IP
- Power consumption: 150W
- Network interface
- 3.5" floppy drive
- Watchdog (optional)
- Printed and online documentation

Size

- Height: 12.9" (4U)
- Width: 5.3"
- Depth: 13.3"
- Weight: 16 lbs.

Certification

- UL
- CE
- FCC

* Medium activity, one high-quality (15KB) image per second per camera over 4 cameras with 60GB storage